

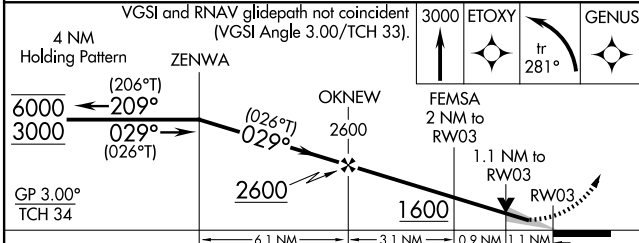
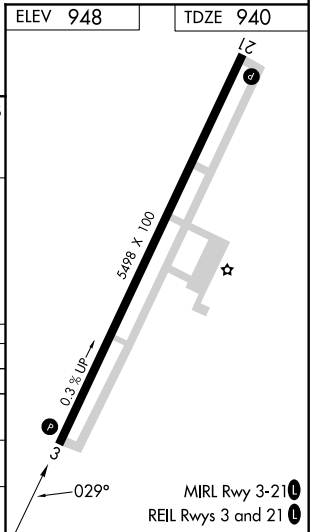
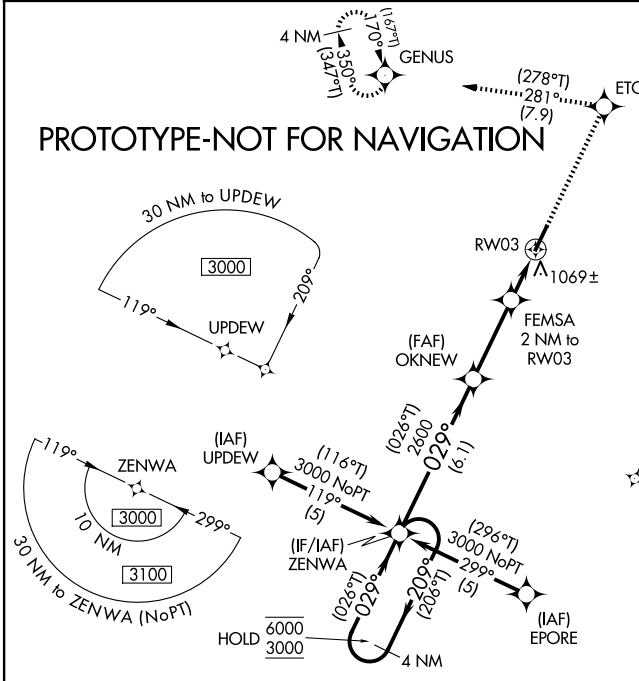
WAAS CH 56309 W03A	APP CRS 029°	Rwy Ldg 5498 TDZE 940 Apt Elev 948
--	------------------------	---

RNAV (GPS) RWY 3

GEORGETOWN-SCOTT COUNTY RGNL (27K)

RNP APCH - GPS.	<p>⚠ For uncompensated Baro-VNAV systems, LNAV/VNAV NA below -16°C or above 54°C. ⚠ Baro-VNAV and VDP NA when using LEX altimeter setting. When local altimeter setting not received, use LEX altimeter setting: increase LPV DA to 1178 feet, increase LNAV/VNAV DA to 1413 feet and all visibilities 1/8 SM; increase all MDAs 40 feet and LNAV visibility Cat C/D 1/8 SM, and Circling visibility Cat D 1/4 SM</p>	MISSED APPROACH: Climb to 3000 direct ETOXY and left turn on track 281° to GENUS and hold, continue climb-in-hold to 3000.
-----------------	--	--

AWOS-3 119.975	LEXINGTON APP CON 120.15 259.3 (040° - 220°) 120.75 298.9 (221° - 039°)	CLNC DEL 127.425	UNICOM 123.0 (CTAF) 0
--------------------------	---	----------------------------	---------------------------------



CATEGORY	A	B	C	D
LPV DA		1140-3/4	200 (200-3/4)	
LNAV/ VNAV DA		1375-1 1/4	435 (500-1 1/4)	
LNAV MDA		1320-1	380 (400-1)	
CIRCLING	1420-1	472 (500-1)	1560-1 3/4 612 (700-1 3/4)	1660-2 1/4 712 (800-2 1/4)