

Flight Procedures Cover Page	Task Action: FLIGHT CHECK	Task Type: IAP	Estimated Chart Date: 03/19/2026	APWS Task ID: CCA32E9DEB26458FBB6BEE78FDDE0490	APWS Project ID: 28E56B32FB744EDBB6DDDF89C679468E3
Procedure: RNAV (GPS) RWY 3 AMDT 2C		Enroute: NO	Specialist: Gonzales, Emmanuel		Agreement Number:
Airport ID: 27K			Airport City: GEORGETOWN		State: KY
Facility ID:	Facility Type:	Flight Inspection Remark Type: New FC Slot			

Procedure Comments:

ACTIVE DATA USED FOR K27K ARPT AND RWY.

CANCEL NOTAM 4/4279 UPON PUBLICATION.

NEW CONTROLLING OBSTACLES FOR TAA LEFT BASE, INITIAL UPDEW TO ZENWA, LNAV FINAL OKNEW TO FEMSA.

WAIVER (1): FAAO 8260.58C APPENDIX C PARAGRAPH 2.A.(1). PBN TRANSITION TO ILS/GLS/LPV FINAL.

CONTACT: RAKE MCGRAW, 405-954-8711.

01/23/2026: THIS IS AN UPDATED COPY OF THE FORM DEVELOPED ON 06/20/2025.
8260-3

1. TERMINAL ROUTES: RW03 TO 1140MSL REMOVED "1.00" RNP.
2. NOTES: CHANGED CHART NOTE FROM "WHEN LOCAL ALTIMETER SETTING NOT RECEIVED, USE LEX ALTIMETER SETTING: INCREASE LPV DA TO 1178 FEET; INCREASE LNAV/VNAV DA TO 1413 FEET AND ALL VISIBILITIES 1/8 SM: INCREASE ALL MDAS 40 FEET AND LNAV VISIBILITY CAT C/D 1/8 SM, AND CIRCLING VISIBILITY CAT D 1/4 SM" TO "WHEN LOCAL ALTIMETER SETTING NOT RECEIVED, USE LEX ALTIMETER SETTING: INCREASE LPV DA TO 1178 FEET; INCREASE LNAV/VNAV DA TO 1358 FEET AND ALL VISIBILITIES 1/8 SM: INCREASE ALL MDAS 40 FEET AND LNAV VISIBILITY CAT C/D 1/8 SM, AND CIRCLING VISIBILITY CAT D 1/4 SM".
3. MINIMUMS: CHANGED LNAV/VNAV DA/HAT ALL CATS FROM "1375/435" TO "1320/380" AND VISIBILITY ALL CATS FROM "1 1/4" TO "1".



FIPC BASIC FORM

PROCEDURE: RNAV (GPS) RWY 3 AMDT 2C		AIRPORT NAME: GEORGETOWN-SCOTT COUNTY	AIRPORT ID: K27K	SPECIAL CONTROL NO: AG-09-006-25
FAC ID: K27K03.02	CITY: GEORGETOWN		ST: KY	ORIG CHART DATE: 11/27/2025
DFL TYPE: PROC/S	THIRD PARTY: <input type="checkbox"/> YES	EST. TIME ON SITE: 0.4	REIMB. NUMBER:	PTS TASK ID: CCA32E9DEB26458FBB6BEE78FDDBE0490

PREFLIGHT NOTES

REVIEWER:	DATE:
COMMENTS:	CHECK ONE: <input type="checkbox"/> FLT CK REQ <input type="checkbox"/> NFCR <input type="checkbox"/> REJECT
	YES NO
	CPV COMPLETE? <input checked="" type="checkbox"/> X

PROCEDURE RESULTS

INSPECTION DATE: 10/08/2025	CREW #: VN426	N #: N83	INSTRUMENT PROCEDURE STATUS: <input checked="" type="checkbox"/> SAT <input type="checkbox"/> SAT W/CHANGES <input type="checkbox"/> UNSAT	ARINC CODING: <input checked="" type="checkbox"/> SAT <input type="checkbox"/> SAT/GOLD <input type="checkbox"/> UNSAT
FLIGHT INSPECTOR SIGNATURE: robert e williams @ 10/09/2025 07:13		PRINTED NAME: WILLIAMS, ROBERT EMIL		NOTAM INITIATED? <input type="checkbox"/> YES <input checked="" type="checkbox"/> NO

FLIGHT INSPECTOR REMARKS:
Georgetown-Scott County RGNL, Georgetown, KY, RNAV (GPS) RWY 03 AMDT 2C. SAT

IN-FLIGHT OBSTACLE REPORT

OBSTRUCTION ID #:	COORDINATES OR LOCATION:	GNSS ALTITUDE (MSL):	BAROMETRIC ALTITUDE (MSL):	HEIGHT ABOVE GROUND LEVEL:
--------------------------	---------------------------------	-----------------------------	-----------------------------------	-----------------------------------

1. FLIGHT PROCEDURE IDENTIFICATION:

Georgetown, KY
Georgetown-Scott County RGNL, (K27K)
RNAV (GPS) RWY 3

2. WAIVER REQUIRED AND APPLICABLE STANDARD:

Request temporary waiver to not develop a capture fix. Applicable Standard is FAAO 8260.58D, Appendix D.para 2a(1): Establish a capture fix. Construct a TF leg aligned with the FAC that is common to all intermediate segments. The start fix of the leg is designated the capture fix. Alternatively where operationally necessary, the capture fix may be placed on or at the start of an RF leg. The preliminary location of the capture fix may be less than 2 NM but no closer than 1 NM prior to the PFAF.

3. REASON FOR WAIVER (JUSTIFICATION FOR NONSTANDARD TREATMENT):

The intent of a capture fix is to ensure aircraft can capture the glide slope when turning on to the final course prior to the PFAF. Flight Standards has stated criteria for development of a capture fix for intermediate segments aligned with the final approach course is currently under review. This temporary waiver will be in place until the change to capture fix language is reflected in criteria.

4. EQUIVALENT LEVEL OF SAFETY PROVIDED:

The intermediate segment for this procedure is 6.11 NM and aligned with the final approach course. There are no turns between the intermediate fix (IF) and the final approach fix (FAF). The turn at the IF has a DTA that is no closer than 2NM prior to the PFAF. The altitudes provided at the IF and FAF allow for continuous descent through the intermediate and final segments.

5. ALTERNATIVE ACTIONS DEEMED NOT FEASIBLE:

Alternatives were considered however none were feasible due to criteria under review for intermediate segments aligned with the final approach course.

6. COORDINATION WITH USER ORGANIZATIONS (SPECIFY):

This K27K instrument procedure was developed with input from ZID, Lexington ATCT, and flying community representatives.

7. SUBMITTED BY:

DATE	OFFICE IDENTIFICATION	TITLE	SIGNATURE
08/01/25	AJV-A421	MANAGER, RAKE MCGRAW	

8. AFS ACTIONS:

APPROVED DISAPPROVED NOT REQUIRED

COMMENTS:

DATE	ROUTING SYMBOL	SIGNATURE

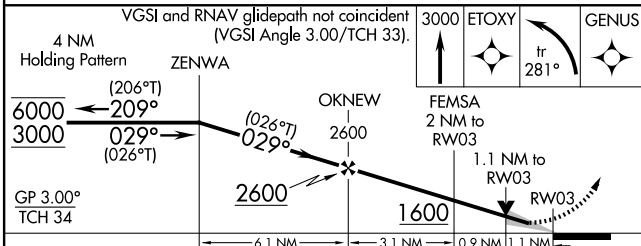
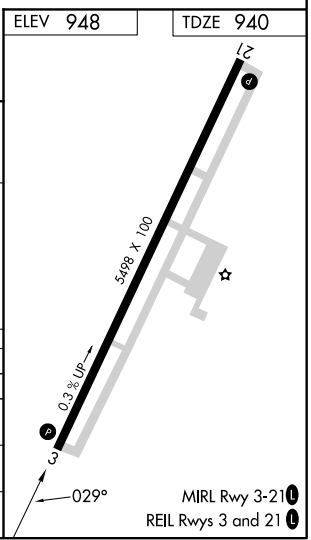
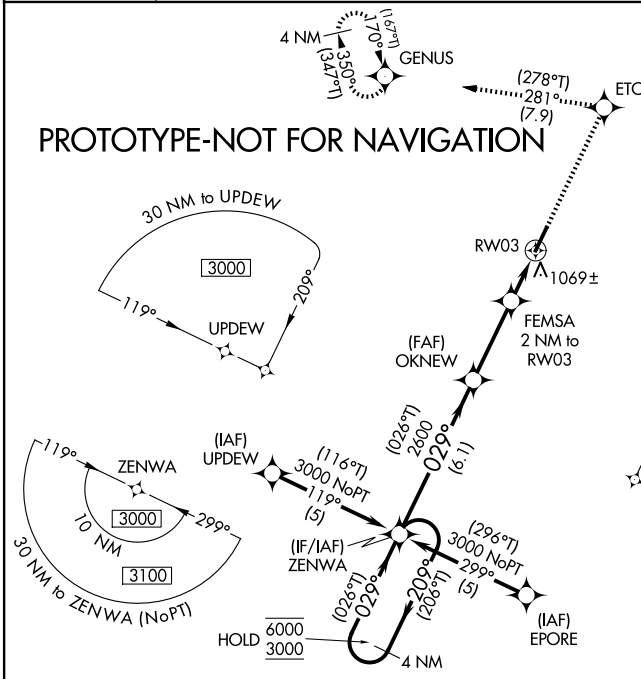
WAAS CH 56309 W03A	APP CRS 029°	Rwy Ldg 5498 TDZE 940 Apt Elev 948
--	------------------------	---

RNAV (GPS) RWY 3

GEORGETOWN-SCOTT COUNTY RGNL (27K)

RNP APCH - GPS.	<p>⚠ For uncompensated Baro-VNAV systems, LNAV/VNAV NA below -16°C or above 54°C. ⚠ Baro-VNAV and VDP NA when using LEX altimeter setting. When local altimeter setting not received, use LEX altimeter setting: increase LPV DA to 1178 feet, increase LNAV/VNAV DA to 1413 feet and all visibilities 1/8 SM; increase all MDAs 40 feet and LNAV visibility Cat C/D 1/8 SM, and Circling visibility Cat D 1/4 SM</p>	MISSED APPROACH: Climb to 3000 direct ETOXY and left turn on track 281° to GENUS and hold, continue climb-in-hold to 3000.
-----------------	--	--

AWOS-3 119.975	LEXINGTON APP CON 120.15 259.3 (040° - 220°) 120.75 298.9 (221° - 039°)	CLNC DEL 127.425	UNICOM 123.0 (CTAF) 0
--------------------------	---	----------------------------	---------------------------------



CATEGORY	A	B	C	D
LPV DA		1140-3/4	200 (200-3/4)	
LNAV/ VNAV DA		1375-1 1/4	435 (500-1 1/4)	
LNAV MDA		1320-1	380 (400-1)	
CIRCLING	1420-1	472 (500-1)	1560-1 3/4 612 (700-1 3/4)	1660-2 1/4 712 (800-2 1/4)

WAAS CH 56309 W03A	APP CRS 029°	Rwy Ldg TDZE Apt Elev	5498 940 948
--	------------------------	-----------------------------	---

OLD

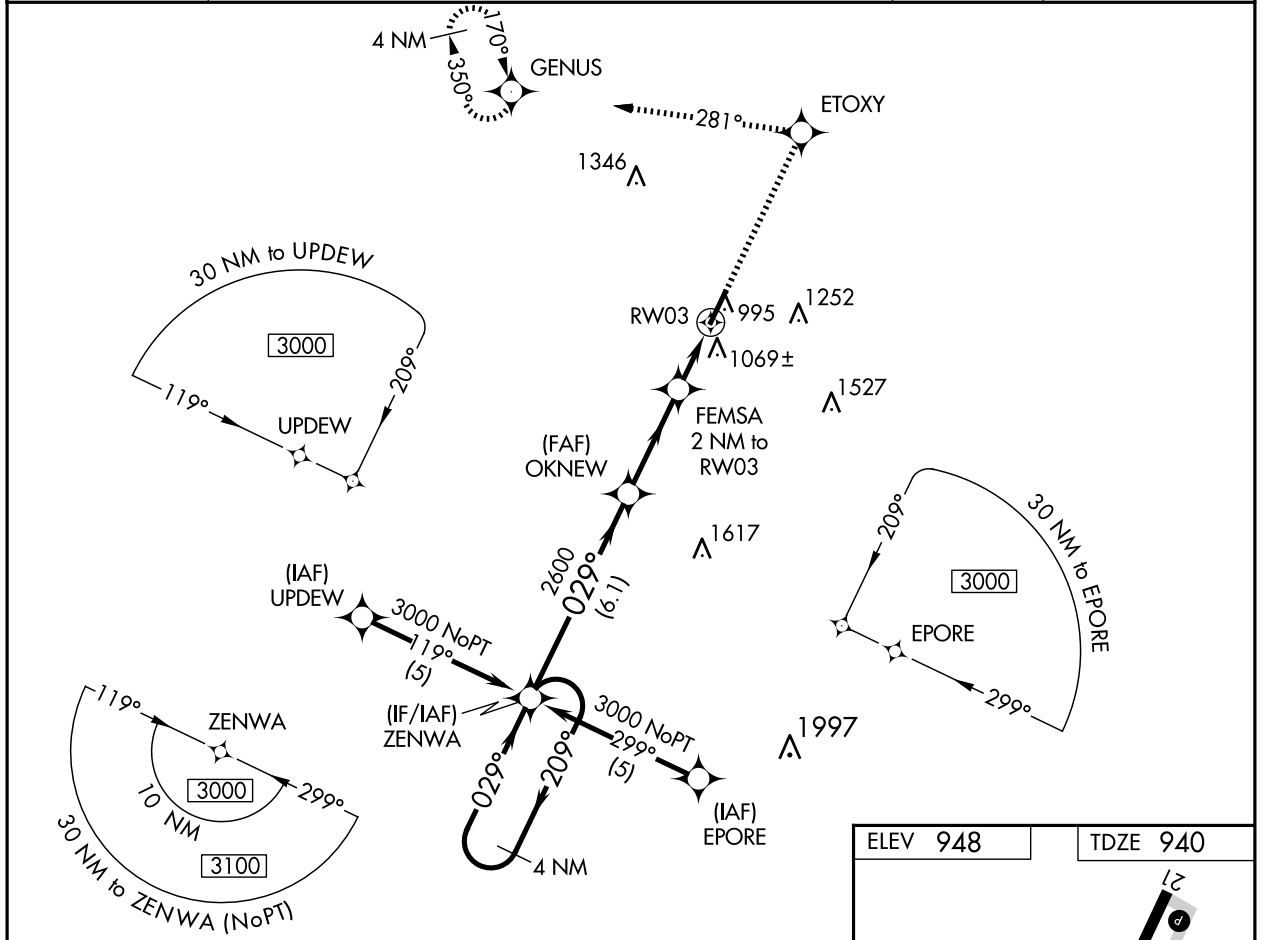
RNAV (GPS) RWY 3

OWN-SCOTT COUNTY RGNL (27K)

▼ For uncompensated Baro-VNAV systems, LNAV/VNAV NA below -16° C (4° F) or above 47° C (116° F). DME/DME RNP-0.3 NA. When local altimeter setting not received, use Lexington altimeter setting and increase LPV DA to 1178, LNAV/VNAV DA to 1413, and all MDA 40 feet; increase LPV and LNAV/VNAV visibility all Cats and LNAV Cat C and Circling Cat D visibility ¼ mile. Baro-VNAV and VDP NA when using Lexington altimeter setting.

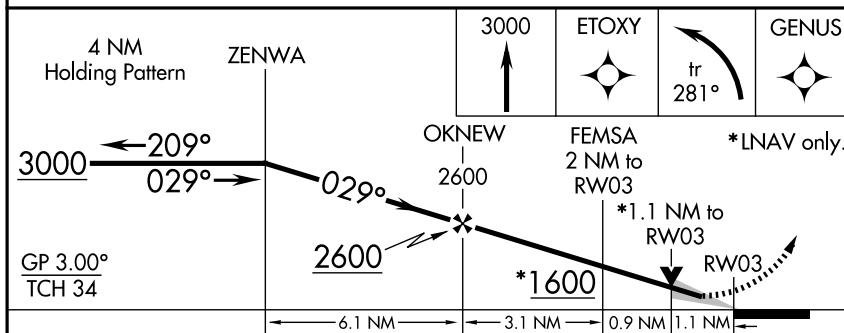
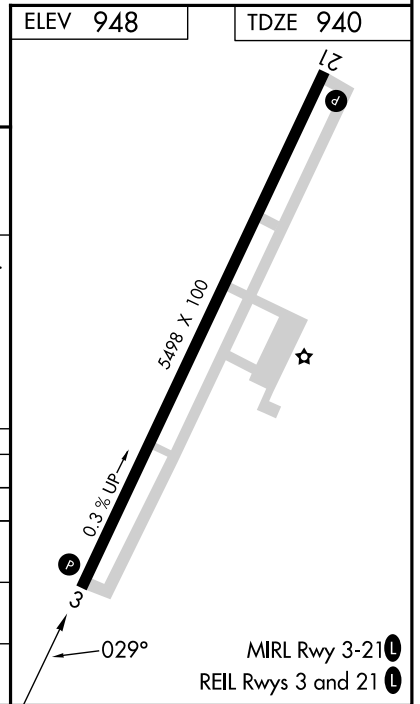
MISSED APPROACH: Climb to 3000 direct ETOXY and left turn on track 281° to GENUS and hold.

AWOS-3 119.975	LEXINGTON APP CON 120.15 259.3 (040° - 220°) 120.75 298.9 (221° - 039°)	CLNC DEL 127.425	UNICOM 123.0 (CTAF) 0
--------------------------	---	----------------------------	---------------------------------



SE-1, 12 JUN 2025 to 10 JUL 2025

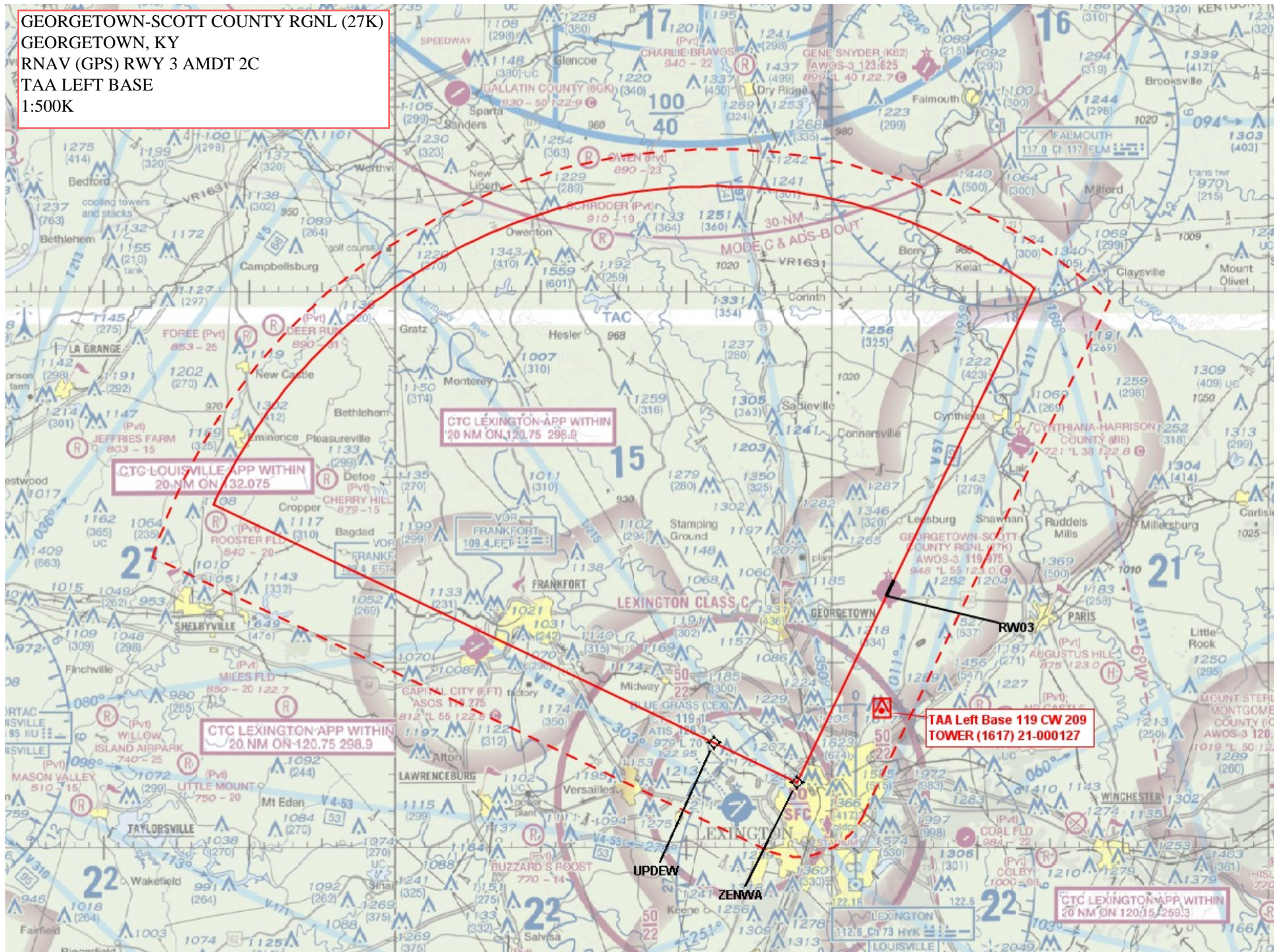
SE-1, 12 JUN 2025 to 10 JUL 2025



CATEGORY	A	B	C	D
LPV DA	1140-3/4		200 (200-3/4)	
LNAV/VNAV DA	1375-1 1/2		435 (500-1 1/2)	
LNAV MDA	1320-1 380 (400-1)		1320-1 1/4 380 (400-1 1/4)	
CIRCLING	1420-1 472 (500-1)		1560-1 3/4 612 (700-1 3/4) 1660-2 1/4 712 (800-2 1/4)	

MIRL Rwy 3-21 0
REIL Rwy 3 and 21 0

GEORGETOWN-SCOTT COUNTY RGNL (27K)
GEORGETOWN, KY
RNAV (GPS) RWY 3 AMDT 2C
TAA LEFT BASE
1:500K



GEORGETOWN-SCOTT COUNTY RGNL (27K)
GEORGETOWN, KY
RNAV (GPS) RWY 3 AMDT 2C
INITIALS, HILPT, INTERMEDIATE, FINAL, MA, MA
HOLDING
1:500K

GENUS_CIH
TOWER (1559) 21-000235

GENUS

Missed Level Surface
TOWER (1350) 21-001758

GENUS HOLDING
TOWER (1350) 21-001758

ZENWA HILPT
TOWER (1612) 21-000118

Initial UPDEW to ZENWA
TOWER (1249) 21-000894

LNAV FEMSA to RW03
TREE (1069)

LNAV OKNEW to FEMSA
AAO (1165)

Initial EPORE to ZENWA/Intermediate ZENWA to OKNEW
TOWER (1612) 21-000118

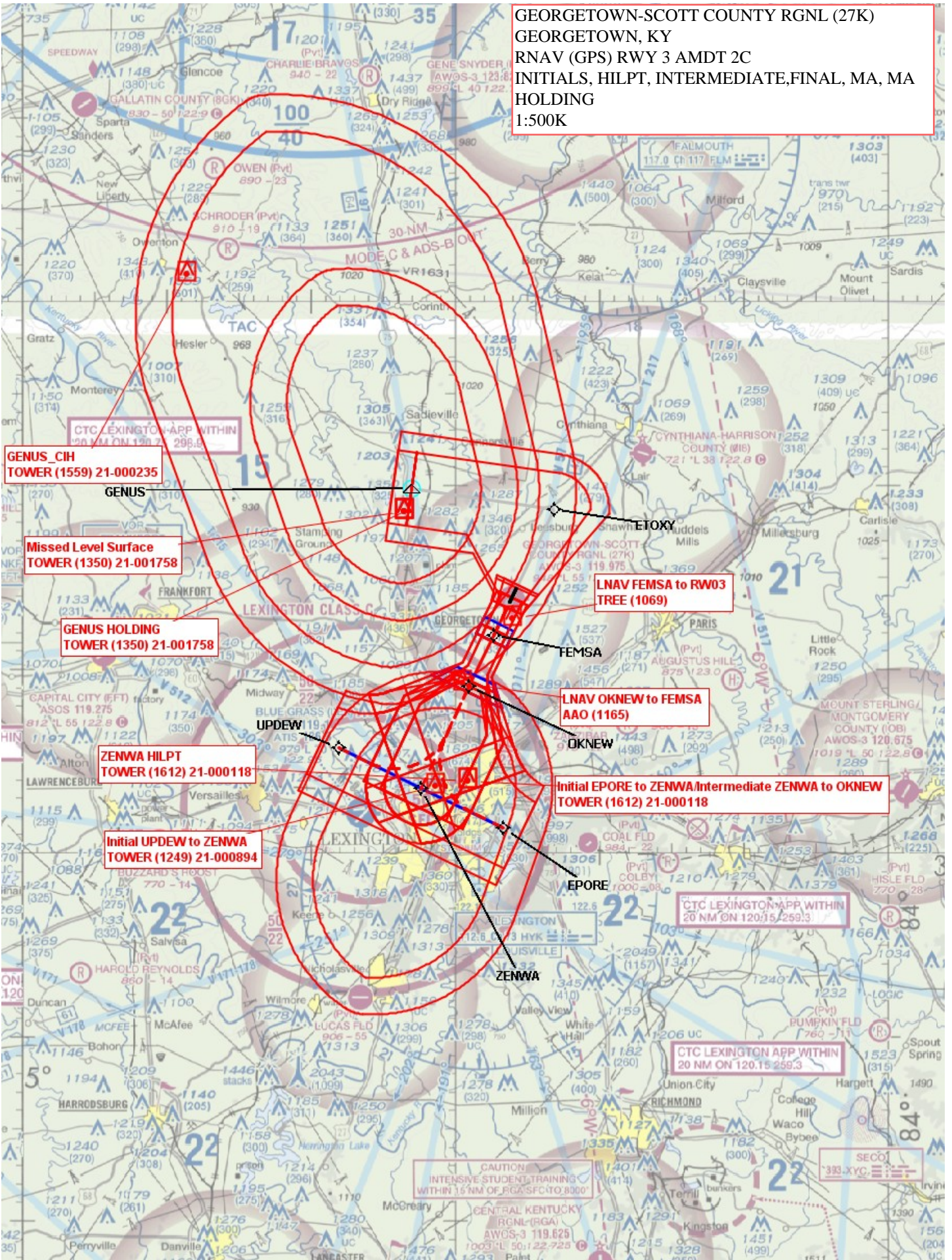
CTC LEXINGTON APP WITHIN
20 NM ON 120.15/259.3

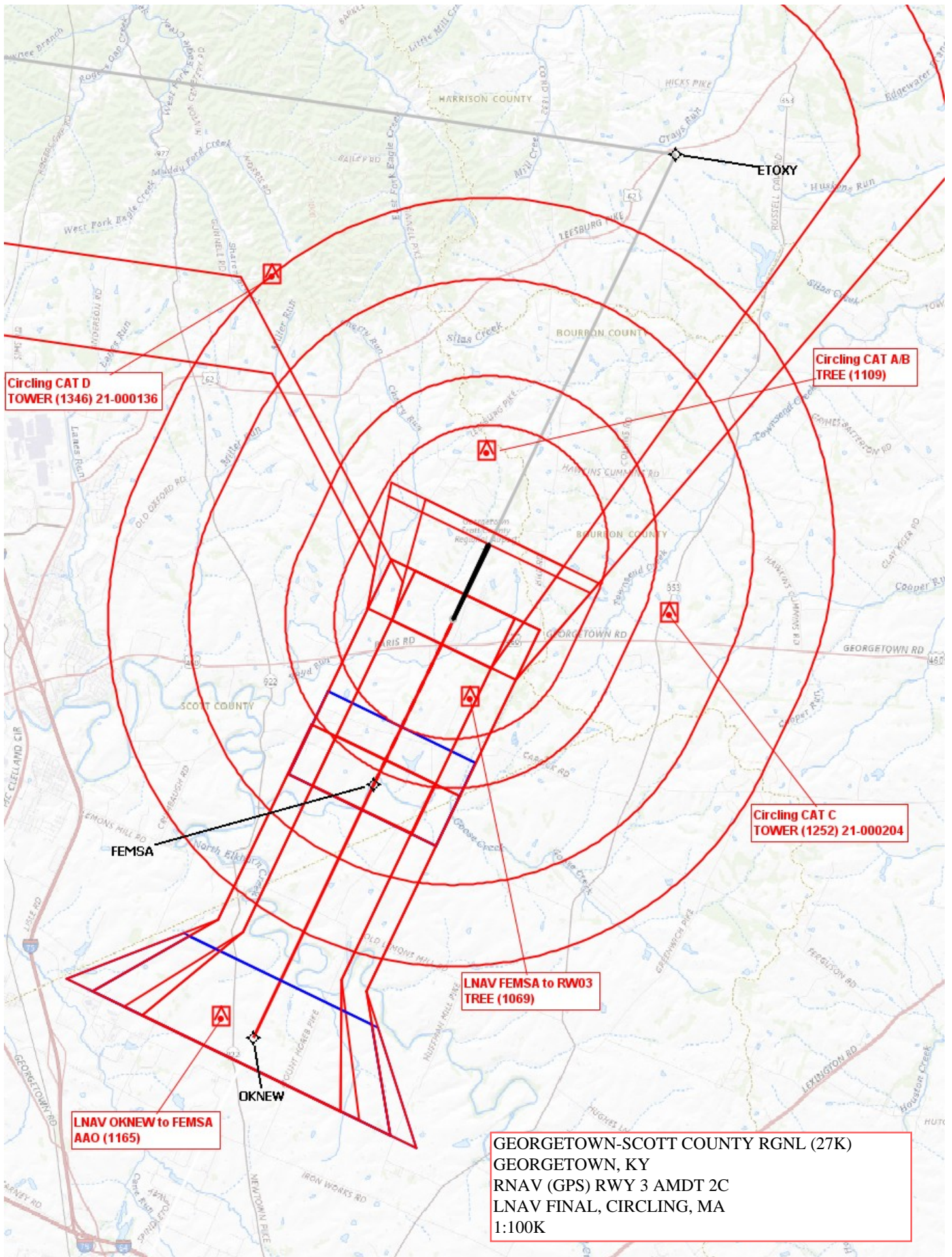
CTC LEXINGTON APP WITHIN
20 NM ON 120.15/259.3

CAUTION
INTENSIVE STUDENT TRAINING
WITHIN 15 NM OF RGA SFC TO 8000'

CENTRAL KENTUCKY
RGNL (RGA)
AWOS-3 119.625
1000' L 50:122-725

SEC 01
383.XYC





**Circling CAT D
TOWER (1346) 21-000136**

**Circling CAT A/B
TREE (1109)**

**Circling CAT C
TOWER (1252) 21-000204**

**LNAV FEMSA to RW03
TREE (1069)**

**LNAV OKNEW to FEMSA
AAO (1165)**

**GEORGETOWN-SCOTT COUNTY RGNL (27K)
GEORGETOWN, KY
RNAV (GPS) RWY 3 AMDT 2C
LNAV FINAL, CIRCLING, MA
1:100K**