

Flight Procedures Cover Page	Task Action: P-NOTAM	Task Type: IAP	Estimated Chart Date: 03/19/2026	APWS Task ID: CD0B0BAD861F4297B3C9CF007480D694	APWS Project ID: 53379866F6E340EA839B8C5FA10D031A
Procedure: RNAV (GPS) RWY 23 AMDT 0E		Enroute: NO	Specialist: Hardison, Dustin		Agreement Number:
Airport ID: KLNN			Airport City: WILLOUGHBY		State: OH
Facility ID:	Facility Type:	Flight Inspection Remark Type:			

**Procedure Comments:**

Processed IAW Technical Support Group (AJF-17) Memo dated 07/07/2021 Guidance for Procedural Changes Requiring Flight Inspection/Validation.  
Contact Rake McGraw AJV-A422 (405)597-8711

QUALITY  
35  
CHECKED

QUALITY  
29  
CHECKED

WAAS CH <b>82410</b> <b>W23A</b>	APP CRS <b>233°</b>	Rwy Idg <b>5028</b>
		TDZE <b>623</b>
		Apt Elev <b>626</b>

OLD

# RNAV (GPS) RWY 23

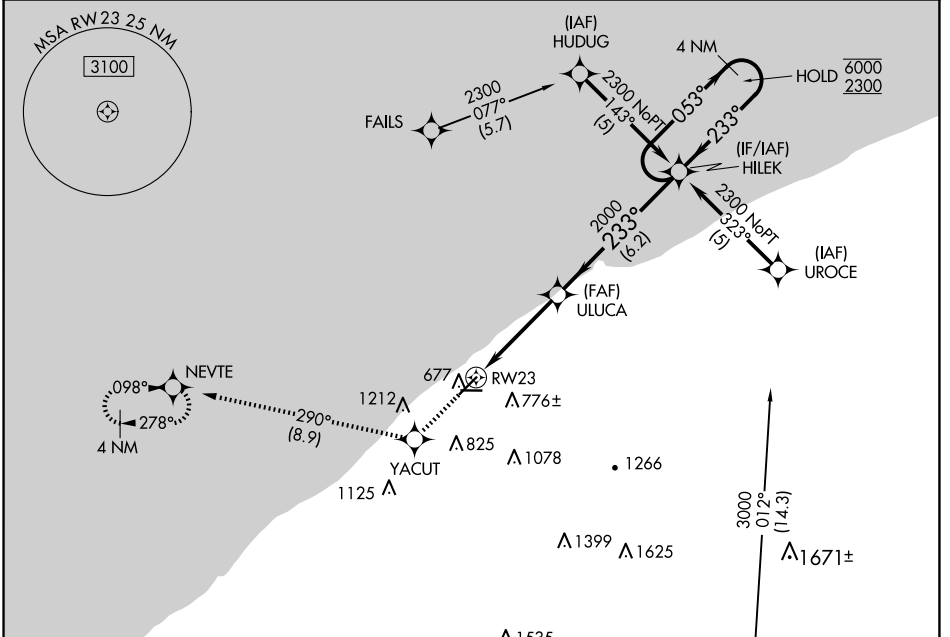
LAKE COUNTY EXEC (LNN)

RNP APCH - GPS.

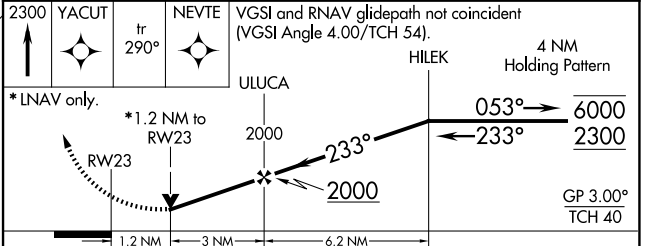
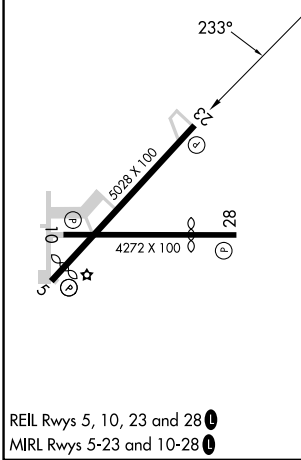
▼ Rwy 23 helicopter visibility reduction below 3/4 SM NA. For uncompensated Baro-VNAV systems, LNAV/VNAV NA below -16°C or above 54°C.

MISSED APPROACH: Climb to 2300 direct YACUT and on track 290° to NEVTE and hold.

AWOS-3PT <b>119.225</b>	CLEVELAND APP CON <b>125.35 346.325</b>	UNICOM <b>122.725 (CTAF) 0</b>
----------------------------	--	-----------------------------------



ELEV 626	TDZE 623
----------	----------



CATEGORY	A	B	C	D
LPV DA		1031-1½ 408 (500-1½)		NA
LNAV/VNAV DA		1142-1¾ 519 (600-1¾)		NA
LNAV MDA	1200-1	577 (600-1)	1200-1½ 577 (600-1½)	NA
CIRCLING	1200-1	574 (600-1)	1520-2¾ 894 (900-2¾)	NA

EC-2, 27 NOV 2025 to 25 DEC 2025

EC-2, 27 NOV 2025 to 25 DEC 2025