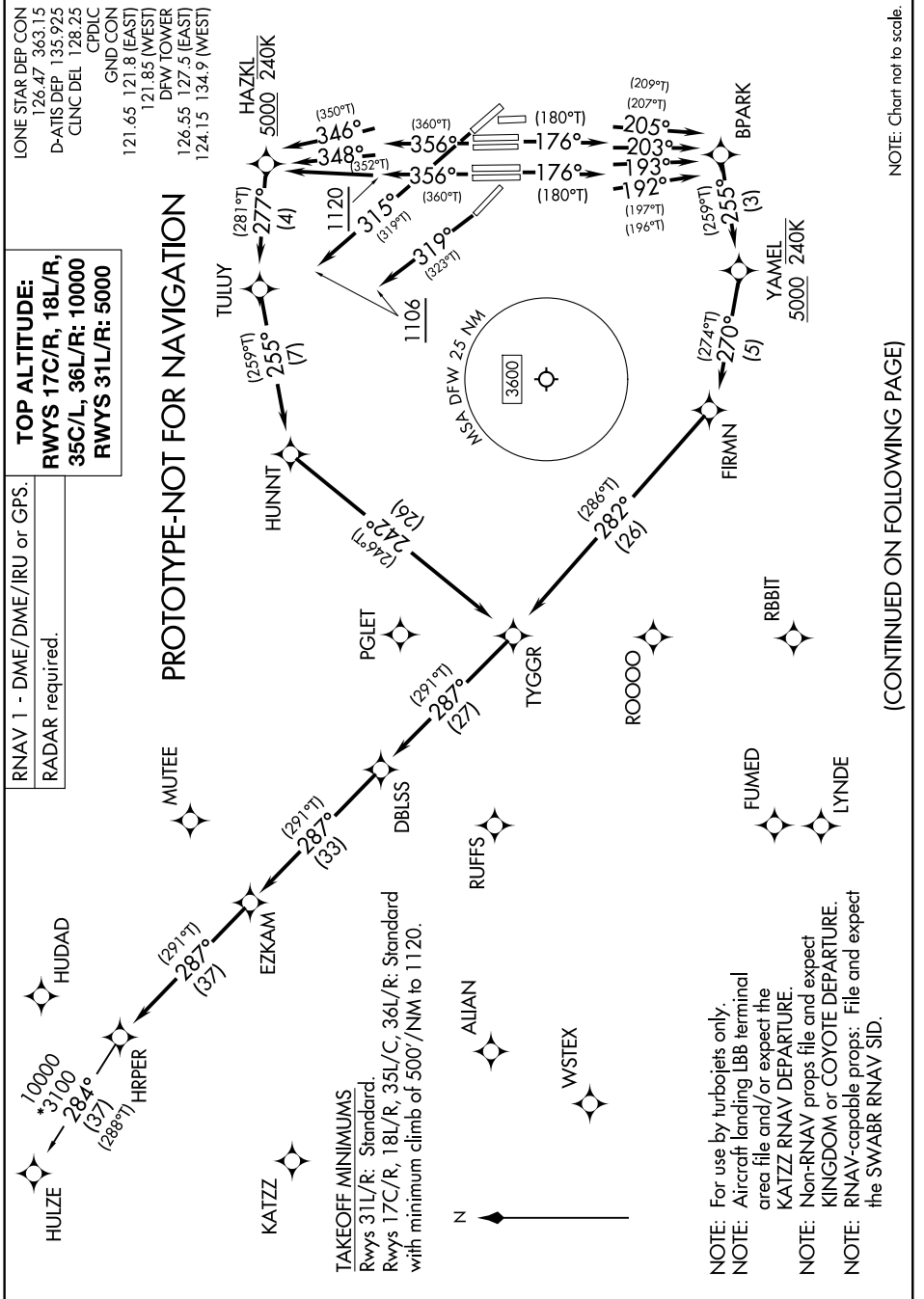


# HRPER FOUR DEPARTURE (RNAV)





DEPARTURE ROUTE DESCRIPTION

TAKEOFF RUNWAY 17C: Climb on heading 176° to intercept course 205° to BPARK, then on track 255° to cross YAMEL at or above 5000 and at or below 240K, thence . . .

TAKEOFF RUNWAY 17R: Climb on heading 176° to intercept course 203° to BPARK, then on track 255° to cross YAMEL at or above 5000 and at or below 240K, thence . . .

TAKEOFF RUNWAY 18L: Climb on heading 176° to intercept course 193° to BPARK, then on track 255° to cross YAMEL at or above 5000 and at or below 240K, thence . . .

TAKEOFF RUNWAY 18R: Climb on heading 176° to intercept course 192° to BPARK, then on track 255° to cross YAMEL at or above 5000 and at or below 240K, thence . . .

TAKEOFF RUNWAY 35C: Climb on heading 356° to intercept course 346° to cross HAZKL at or above 5000 and at or below 240K, then on track 277° to TULUY, thence . . .

TAKEOFF RUNWAY 35L: Climb on heading 356° to intercept course 348° to cross HAZKL at or above 5000 and at or below 240K, then on track 277° to TULUY, thence . . .

TAKEOFF RUNWAYS 36L/R: Climb on heading 356° to 1120, then direct HAZKL to cross at or above 5000 at or below 240K, then on track 277° to TULUY, thence . . .

TAKEOFF RUNWAY 31L: Climb on heading 315° to 1106, for vectors to TYGGR, thence . . .

TAKEOFF RUNWAY 31R: Climb on heading 311° to 1106, for vectors to TYGGR, thence . . .

. . . on depicted route to HRPER, then on transition. Maintain (Rwy 31L/31R) 5000 / (Rwy 17C/17R/18L/18R/35C/35L/36L/36R) 10000, expect filed altitude ten minutes after departure.

HULZE TRANSITION (HRPER4.HULZE)

PROTOTYPE-NOT FOR NAVIGATION