

Flight Procedures Cover Page	Task Action: FLIGHT CHECK	Task Type: IAP	Estimated Chart Date: 05/14/2026	APWS Task ID: CE76D3952E2B44E19ECBDEAB8BC4EA59	APWS Project ID: 2B20A859A3A4455FB6CAD1C7A73870E1
Procedure: VOR OR TACAN RWY 5 AMDT 21		Enroute: NO	Specialist: Weston, Daniel		Agreement Number:
Airport ID: KFWA			Airport City: FORT WAYNE		State: IN
Facility ID: FWA	Facility Type: VORTAC	Flight Inspection Remark Type: New FC Slot			

Procedure Comments:
ACTIVE AIRNAV DATA USED.

CONTACT RAKE MCGRAW AJV-A422 405-954-8711.

03/05/26: THIS IS AN UPDATED COPY OF THE FORMS DEVELOPED ON 10/30/25.
1. REQUIRED EFFECTIVE DATE CHANGED TO 05/14/2026.
2. FLIGHT CHECKED BY CHANGED TO PENDING.

QUALITY
35
CHECKED

QUALITY
38
CHECKED

QUALITY
38
CHECKED

QUALITY
40
CHECKED

VORTAC FWA 117.8 Chan 125	APP CRS 054°	Rwy Ldg TDZE Apt Elev	11981 815 815
---	------------------------	-----------------------------	--

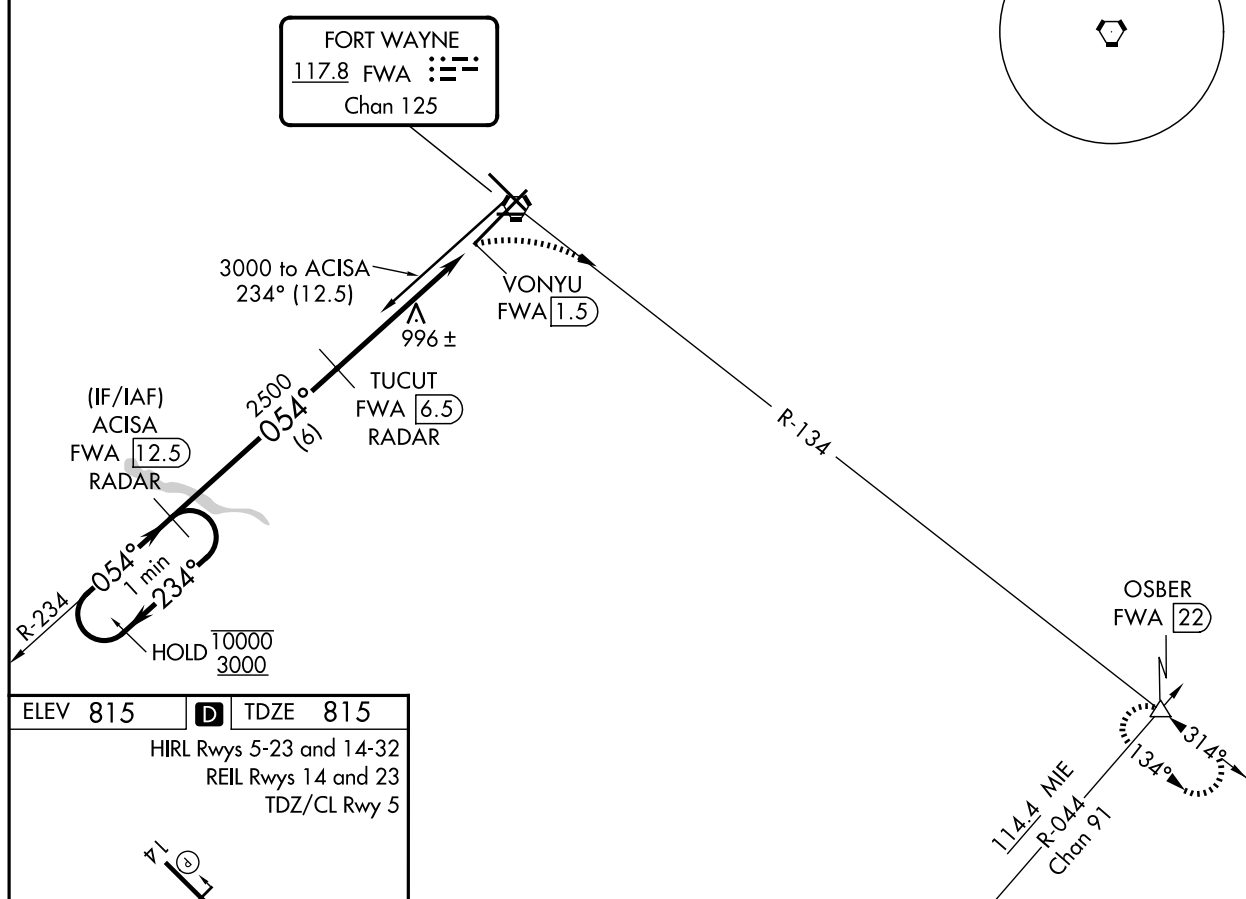
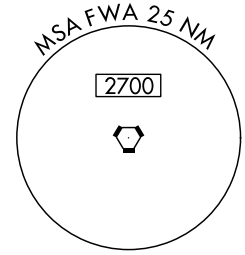
OLD

VOR or TACAN RWY 5

FORT WAYNE INTL (FWA)

DME or RADAR required.		ALSIF-2	MISSED APPROACH: Climbing right turn to 3000 on FWA VORTAC R-134 to OSBER INT/FWA 22 DME and hold.		
ATIS 121.25 360.825	FORT WAYNE APP CON 127.2 284.6	FORT WAYNE TOWER 119.1 269.325	GND CON 121.9 348.6	CLNC DEL 124.75	

Procedure NA for arrival on FWA VORTAC airway radials 198 CW 294.



EC-2, 02 OCT 2025 to 30 OCT 2025

EC-2, 02 OCT 2025 to 30 OCT 2025

ELEV 815	D	TDZE 815			
HIRL Rwy 5-23 and 14-32 REIL Rwy 14 and 23 TDZ/CL Rwy 5					
FAF to MAP 5 NM					
Knots	60	90	120	150	180
Min:Sec	5:00	3:20	2:30	2:00	1:40

One Minute Holding Pattern	ACISA FWA 12.5 RADAR	TUCUT FWA 6.5 RADAR	3000	FWA R-134	OSBER
10000 ← 234°	→ 054°	→ 054°	→ 054°	→ 054°	→ 054°
3000	6 NM	3.6 NM	1.4		
CATEGORY	A	B	C	D	E
S-5	1320/24	505 (600-½)	1320/55	505 (600-1)	1320/60 505 (600-1¼)
CIRCLING	1320-1	505 (600-1)	1360-1½ 545 (600-1½)	1520-2¼ 705 (800-2¼)	1520-2½ 705 (800-2½)