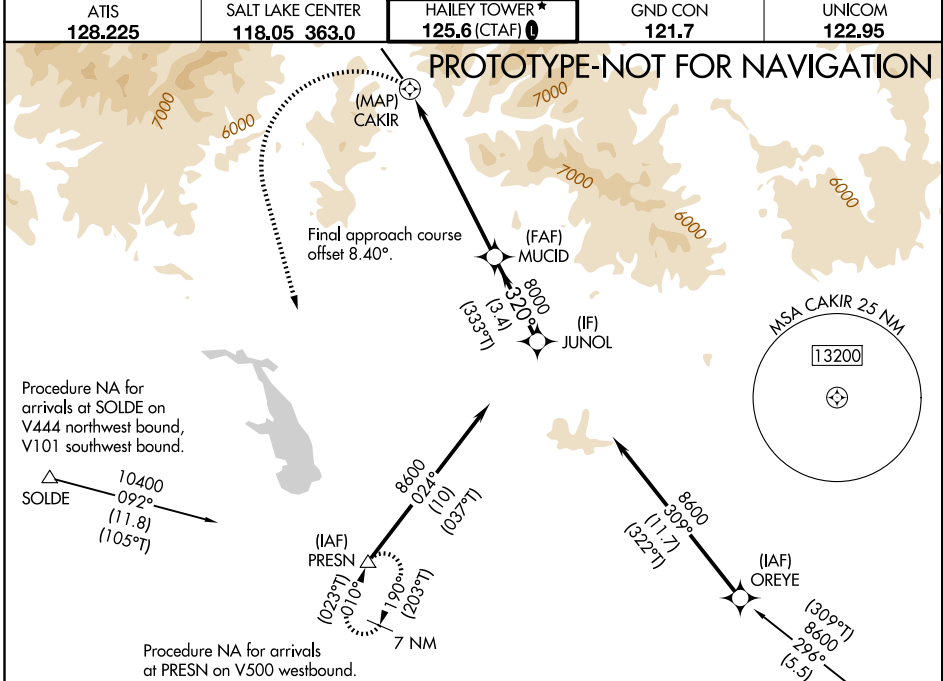


WAAS CH <b>62939</b> <b>W31B</b>	APP CRS <b>320°</b>	Rwy Ldg TDZE Apt Elev <b>6631</b> <b>5289</b> <b>5320</b>
--	------------------------	--

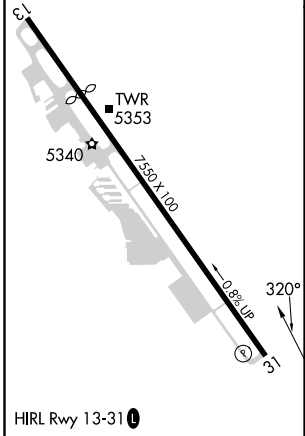
# RNAV (GPS) Y RWY 31

FRIEDMAN MEML (SUN)

RNP APCH - GPS.		MISSED APPROACH: (Do not exceed 185 KIAS until PRESN) Climbing left turn to 8700 direct PRESN and hold. *Missed approach requires minimum climb of 410 feet per NM to 7600.	
Circling NA northeast of Rwy 13-31. Rwy 31 helicopter visibility reduction below ¾ SM NA. -13°C			
ATIS <b>128.225</b>	SALT LAKE CENTER <b>118.05 363.0</b>	HAILEY TOWER* <b>125.6 (CTAF) 0</b>	UNICOM <b>122.95</b>



ELEV 5320	<b>D</b> TDZE 5289
-----------	--------------------



	8700 PRESN	MUCID	JUNOL	
	CAKIR	8000	8600	
	0.5 NM	3.7 NM to CAKIR	3 NM	
		≤ 3.50° TCH 55	3.4 NM	
CATEGORY	A	B	C	D
LP MDA*	6900-1¼ 1611 (1600-1¼)	6900-1½ 1611 (1600-1½)	6900-3	1611 (1600-3)
LP MDA	7220-1¼ 1931 (1900-1¼)	7220-1½ 1931 (1900-1½)	7220-3	1931 (1900-3)
LNAV MDA*	7100-1¼ 1811 (1800-1¼)	7100-1½ 1811 (1800-1½)	7100-3	1811 (1800-3)
LNAV MDA	7340-1¼ 2051 (2100-1¼)	7340-1½ 2051 (2100-1½)	7340-3	2051 (2100-3)
CIRCLING	7340-1¼ 2020 (2100-1¼)	7360-1½ 2040 (2100-1½)	7580-3 2260 (2300-3)	7940-3 2620 (2700-3)