

Flight Procedures Cover Page	Task Action: FLIGHT CHECK	Task Type: IAP	Estimated Chart Date: 03/19/2026	APWS Task ID: CF102CC9CD6E4396A3F83628464A2BDA	APWS Project ID: 4EEF4C82B2DD4671932B53D3DD04A954
Procedure: RNAV (GPS) Y RWY 31 AMDT 0A		Enroute: NO	Specialist: Ferreira, Giorgia		Agreement Number:
Airport ID: KSUN			Airport City: HAILEY		State: ID
Facility ID:	Facility Type:	Flight Inspection Remark Type: New FC Slot			

Procedure Comments:

CRC REMAINDER CHANGED DUE TO EVALUATION WITH TARGETS VERSUS OLDER EVALUATION PROGRAM, NO CHANGE TO FLIGHT TRACKS, ALTITUDES OR FIXES.

AMENDMENT COMPLETED USING ACTIVE AIRNAV DATA.

KSUN_RNAV_(GPS)_Y_RWY_31_ORIG_A (ENTIRE PROCEDURE).

KSUN_RNAV_(GPS)_Y_RWY_31_ORIG_A_1 (MISSED PENETRATIONS).

CONTACT: ROBERT HAMILTON (AJV-A433) 405.954.4608

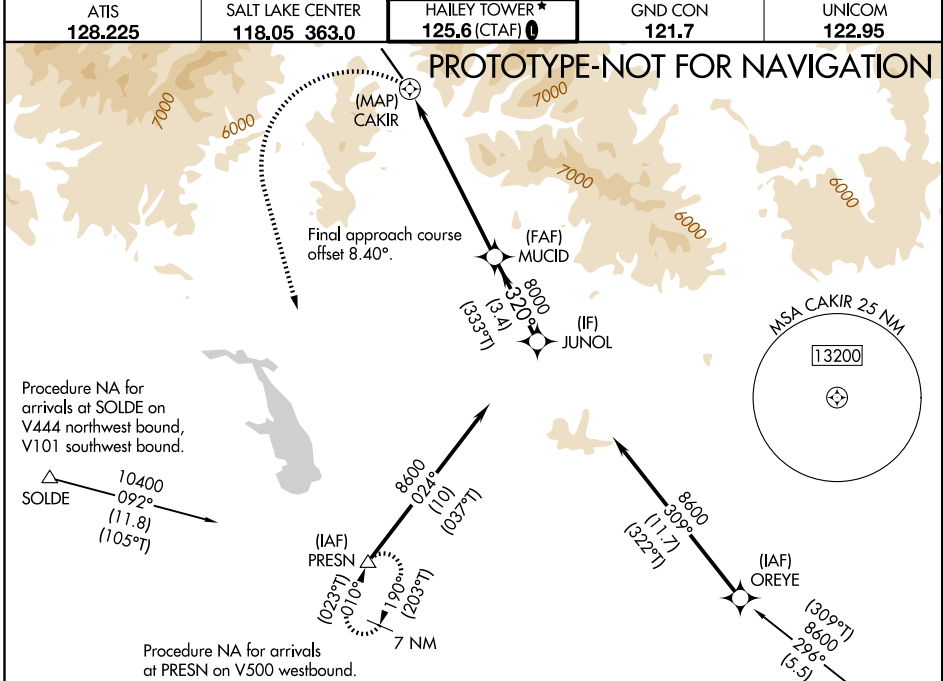


WAAS CH 62939 W31B	APP CRS 320°	Rwy Ldg TDZE Apt Elev	6631 5289 5320
--	------------------------	-----------------------------	---

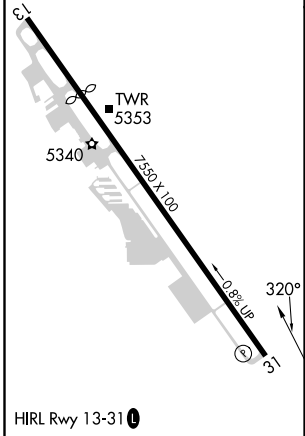
RNAV (GPS) Y RWY 31

FRIEDMAN MEML (SUN)

RNP APCH - GPS.		MISSED APPROACH: (Do not exceed 185 KIAS until PRESN) Climbing left turn to 8700 direct PRESN and hold. *Missed approach requires minimum climb of 410 feet per NM to 7600.	
Circling NA northeast of Rwy 13-31. Rwy 31 helicopter visibility reduction below ¾ SM NA. -13°C			
ATIS 128.225	SALT LAKE CENTER 118.05 363.0	HAILEY TOWER* 125.6 (CTAF) 0	UNICOM 122.95



ELEV 5320	D TDZE 5289
-----------	--------------------



8700	PRESN	MUCID	JUNOL	
CAKIR	3.7 NM to CAKIR	8000	8600	
0.5 NM	3.7 NM	3 NM	3.4 NM	
≤ 3.50° TCH 55				
CATEGORY	A	B	C	D
LP MDA*	6900-1¼ 1611 (1600-1¼)	6900-1½ 1611 (1600-1½)	6900-3	1611 (1600-3)
LP MDA	7220-1¼ 1931 (1900-1¼)	7220-1½ 1931 (1900-1½)	7220-3	1931 (1900-3)
LNAV MDA*	7100-1¼ 1811 (1800-1¼)	7100-1½ 1811 (1800-1½)	7100-3	1811 (1800-3)
LNAV MDA	7340-1¼ 2051 (2100-1¼)	7340-1½ 2051 (2100-1½)	7340-3	2051 (2100-3)
CIRCLING	7340-1¼ 2020 (2100-1¼)	7360-1½ 2040 (2100-1½)	7580-3 2260 (2300-3)	7940-3 2620 (2700-3)

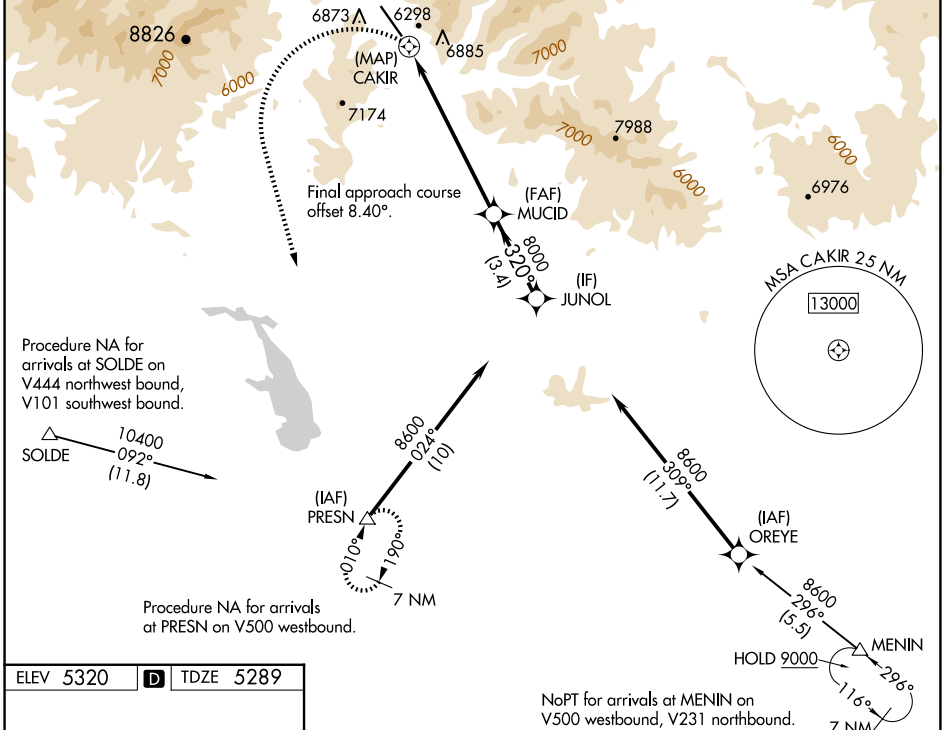
WAAS CH 62939 W31B	APP CRS 320°	Rwy Ldg TDZE 5289 Apt Elev 5320
--	------------------------	---

OLD

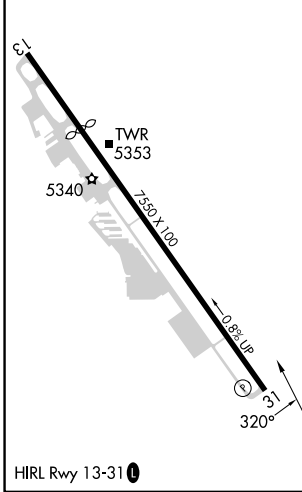
RNAV (GPS) Y RWY 31
FRIEDMAN MEML (SUN)

⚠ Circling NA northeast of Rwy 13-31.
⚠ DME/DME RNP-0.3 NA. Rwy 31 helicopter visibility reduction below 1 SM NA.
⚠ MISSED APPROACH: (Do not exceed 185 KIAS until PRESN) Climbing left turn to 8700 direct PRESN and hold. *Missed approach requires minimum climb of 410 feet per NM to 7600.

ATIS 128.225	SALT LAKE CENTER 118.05 363.0	HAILEY TOWER* 125.6 (CTAF) 0	GND CON 121.7	UNICOM 122.95
------------------------	---	--	-------------------------	-------------------------



ELEV 5320	D	TDZE 5289
-----------	----------	-----------



8700	PRESN	MUCID	JUNOL	
	△			
	CAKIR	MUCID	JUNOL	
		320°	8600	
		8000		
		≤ 3.50°		
		TCH 55		
	0.5 NM	6.7 NM	3.4 NM	
CATEGORY	A	B	C	D
LP MDA*	6900-1¼ 1611 (1600-1¼)	6900-1½ 1611 (1600-1½)	6900-3	1611 (1600-3)
LP MDA	7220-1¼ 1931 (1900-1¼)	7220-1½ 1931 (1900-1½)	7220-3	1931 (1900-3)
LNAV MDA*	7100-1¼ 1811 (1800-1¼)	7100-1½ 1811 (1800-1½)	7100-3	1811 (1800-3)
LNAV MDA	7340-1¼ 2051 (2100-1¼)	7340-1½ 2051 (2100-1½)	7340-3	2051 (2100-3)
C CIRCLING	7340-1¼ 2020 (2100-1¼)	7360-1½ 2040 (2100-1½)	7580-3 2260 (2300-3)	7940-3 2620 (2700-3)

NW-1, 07 AUG 2025 to 04 SEP 2025

NW-1, 07 AUG 2025 to 04 SEP 2025