

APP CRS
243°

Rwy ldg 5001
TDZE 157
APT Elev 164

RNAV (GPS) RWY 24

HUDSON VALLEY RGNL (KPOU)

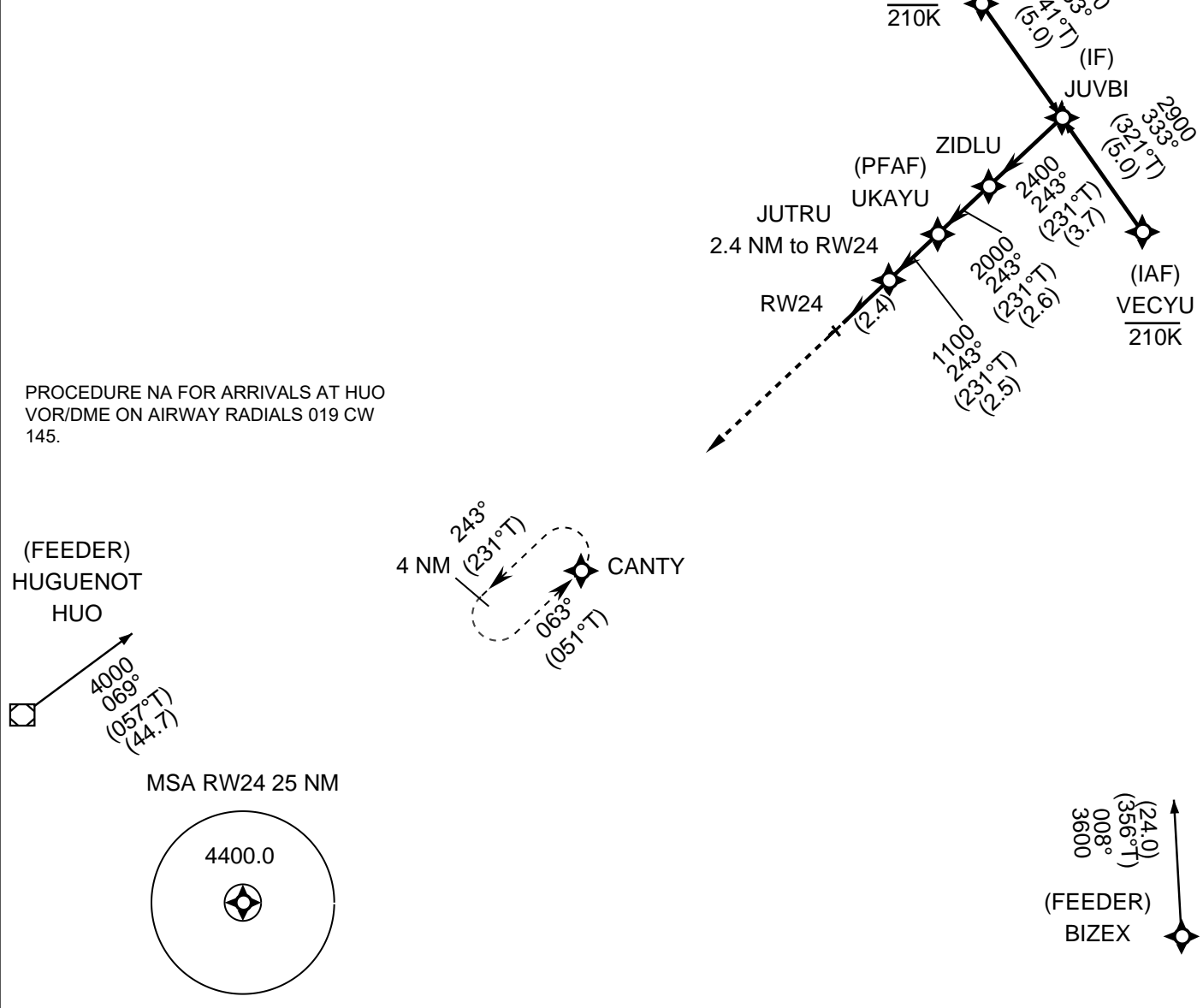
RNP APCH - GPS

CIRCLING NA TO RWYS 7 AND 25. CIRCLING RWY 15, 33 NA AT NIGHT. STRAIGHT-IN OR CIRCLING RWY 24 AT NIGHT, OPERATIONAL VGSi REQUIRED, REMAIN ON OR ABOVE VGSi GLIDEPATH UNTIL THRESHOLD. RWY 24 HELICOPTER VISIBILITY REDUCTION BELOW 1 SM NOT AUTHORIZED. WHEN LOCAL ALTIMETER SETTING NOT RECEIVED, USE MGJ ALTIMETER SETTING AND INCREASE ALL MDA 80 FEET, LNAV CATS C/D VISIBILITY 1/2 SM, AND CIRCLING CATS A/C VISIBILITY 1/4 SM.

MISSED APPROACH:
CLIMB TO 3200 DIRECT CANTY AND HOLD.

| | | | | |
|----------------|----------------------------------|---|------------------|------------------|
| ATIS 126.75 | NEW YORK APP CON 132.75 363.1 | DUTCHESS COUNTY TOWER* 124.0 (CTAF) 269.15 | GND CON 121.8 | UNICOM 122.95 |
|----------------|----------------------------------|---|------------------|------------------|

PROTOTYPE-NOT FOR NAVIGATION



PROCEDURE NA FOR ARRIVALS AT HUO
VOR/DME ON AIRWAY RADIALS 019 CW
145.

| | | | | | |
|----------|-----------|----------------------------|---------------|---------------|--------------------------|
| 3200 | CANTY | | | | |
| ↑ | ◆ | | | | |
| GP 3.42° | TCH 57 | JUTRU 2.4 NM to RW24 | UKAYU 2000 | ZIDLU 2400 | JUVBI 243° (231°T) |
| | | 1100 | | | |
| | | 2.4 NM | 2.5 NM | 2.6 NM | 3.7 NM |
| CATEGORY | A | B | C | D | |
| LNAV | 900-1 743 | 900-1 1/4 743 | 900-2 743 | | |
| CIRCLING | 900-1 736 | 900-1 1/4 736 | 940-2 1/4 776 | 1080-3 916 | |