

Flight Procedures Cover Page	Task Action: P-NOTAM	Task Type: IAP	Estimated Chart Date: 09/03/2026	APWS Task ID: D07411045C654B92A3C5216961E54A8F	APWS Project ID: 90076120D07041398861FF2CF84D47F0
Procedure: ILS OR LOC RWY 33L AMDT 13A		Enroute: NO	Specialist: Smith, Bryant		Agreement Number:
Airport ID: KBWI			Airport City: BALTIMORE		State: MD
Facility ID: RUX	Facility Type: ILS	Flight Inspection Remark Type:			

Procedure Comments:

P-NOTAM corrects Simultaneous Approach note.

PROCESSED IAW TECHNICAL SUPPOSRT GROUP (AJF-17) MEMO DATED 07/07/2021, SUBJECT: GUIDANCE FOR PROCEDURAL CHANGES REQUIRING FLIGHT INSPECTION/VALIDATION

CONTACT: ROB HAMILTON A433 MANAGER, 405-954-4608



LOC I-RUX 111.7	APP CRS 335°	Rwy Ldg TDZE Apt Elev	8301 143 143
---------------------------	------------------------	-----------------------------	-----------------------------------------

BALTIMORE/
WASHINGTON INTL THURGOOD MARSHALL (BWI)

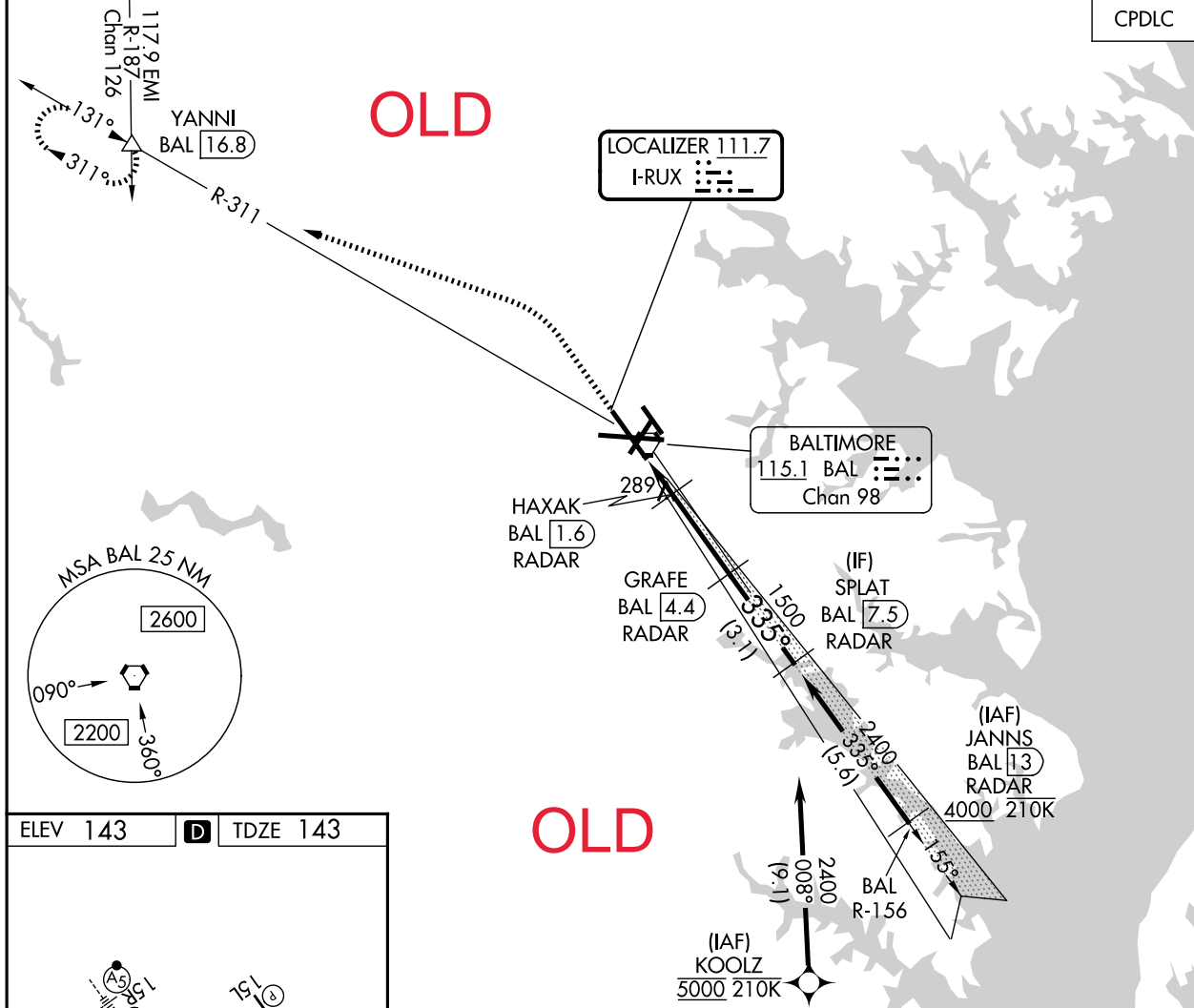
ILS or LOC RWY 33L

RNP APCH - GPS. From KOOLZ.
RADAR required for procedure entry. DME or RADAR required.

Simultaneous approach authorized with ILS or LOC Rwy 33R. DME from BAL VORTAC. DME use requires simultaneous reception of I-RUX and BAL DME.

MALSR MISSED APPROACH: Climb to 600 then climbing left turn to 2600 on heading 300° and BAL VORTAC R-311 to YANNI INT/BAL 16.8 DME and hold.

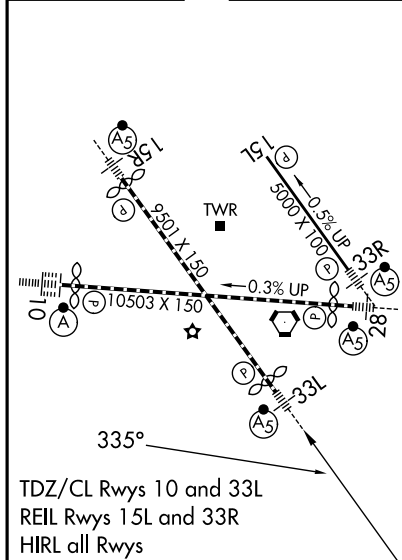
D-ATIS 115.1 127.8	POTOMAC APP CON 119.0 282.275 124.55 317.425	(020°-100°) (101°-130°)	119.7 290.475 128.7 307.9	(131°-180°) (181°-019°)	BALTIMORE TOWER 119.4 257.8	GND CON 121.9	CLNC DEL 118.05
------------------------------	------------------------------------------------------------------	----------------------------	--------------------------------------------	----------------------------	---------------------------------------	-------------------------	---------------------------



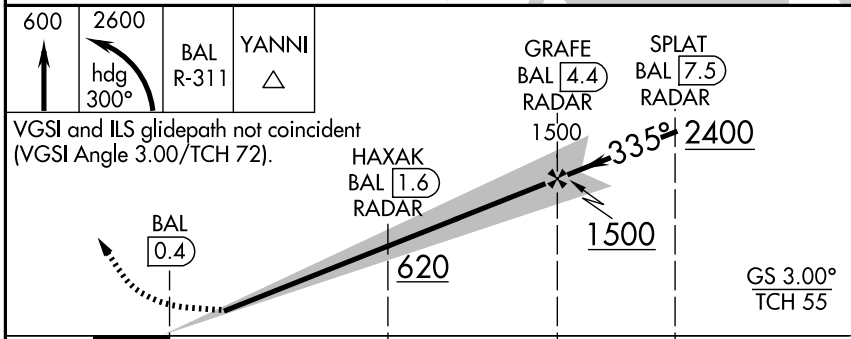
NE-3, 19 FEB 2026 to 19 MAR 2026

NE-3, 19 FEB 2026 to 19 MAR 2026

ELEV 143	D	TDZE 143
----------	----------	----------



FAF to MAP 4.1 NM					
Knots	60	90	120	150	180
Min:Sec	4:06	2:44	2:03	1:38	1:22



CATEGORY	A	B	C	D
S-ILS 33L	343/18		200 (200-½)	
S-LOC 33L	540/24 397 (400-½)		540/35 397 (400-⅝)	
CIRCLING	640-1 497 (500-1)	660-1 517 (600-1)	700-1½ 557 (600-1½)	880-2¼ 737 (800-2¼)