

WAAS CH XXXX XXX	APP CRS 063°	Rwy ldg 5001 TDZE 156 APT Elev 164
------------------------	------------------------	---

RNAV (GPS) RWY 6

HUDSON VALLEY RGNL (KPOU)

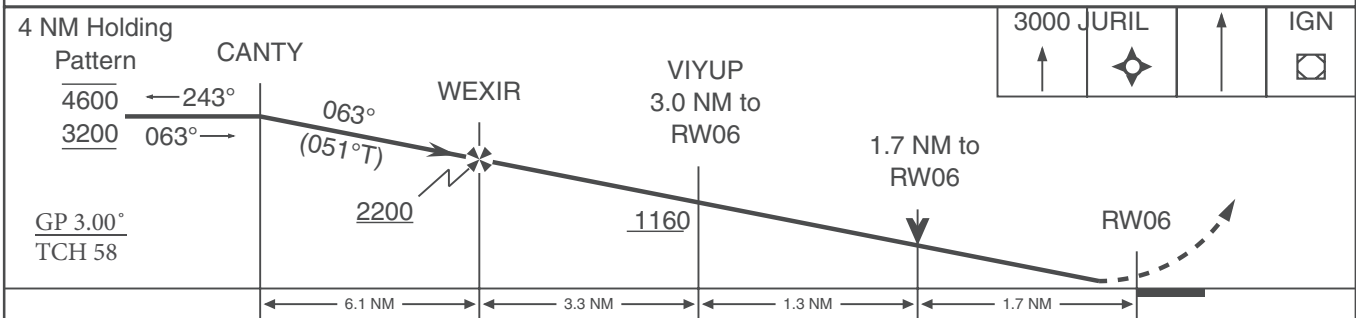
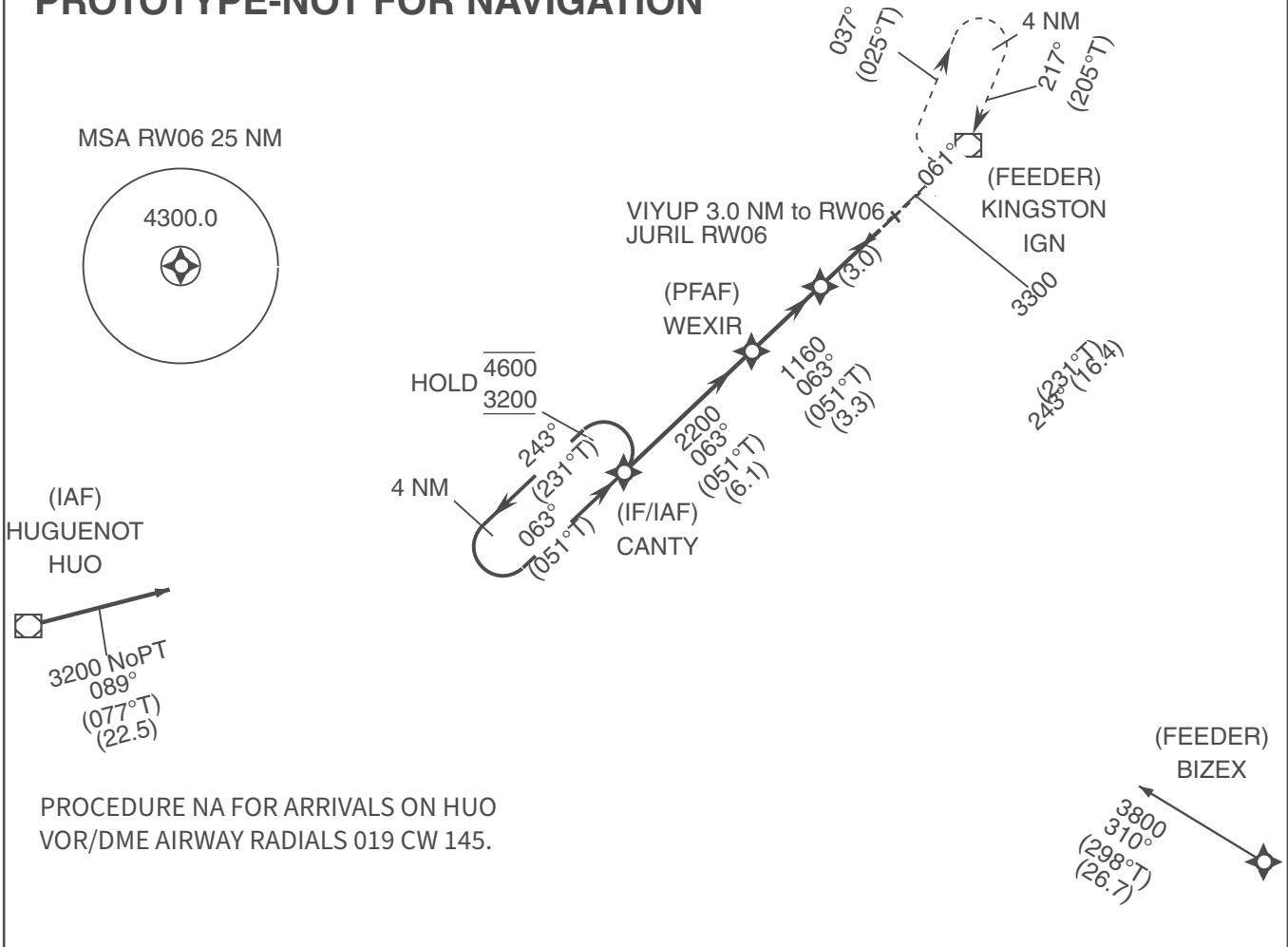
Circling NA to RWYs 7 and 25. Circling Rwy 15, 33 NA at Night. When Circling to Rwy 24 at Night, operational VGSI required, remain on or above VGSI glidepath until threshold. For uncompensated Baro-VNAV systems, LNAV/VNAV NA below -19°C or above 54°C. BARO-VNAV and VDP NA when using MGJ altimeter setting. Rwy 6 helicopter visibility reduction below 3/4 SM not authorized. When local altimeter setting not received, use MGJ altimeter setting and increase LPV DA to 573 FT; increase LNAV/VNAV DA to 808 FT and all CATS visibility 1/8 SM; increase all MDAS 80 FT and LNAV CATS C/D and circling CAT C visibility 1/4 SM. For inoperative, increase LNAV visibility CATS A/B to 1 SM.

MISSED APPROACH:

CLIMB TO 3000 DIRECT JURIL AND ON TRACK 061.36 TO IGN VOR/DME AND HOLD, CONTINUE CLIMB-IN-HOLD TO 3000.

ATIS 126.75	NEW YORK APP CON 132.75 363.1	DUTCHESS COUNTY TOWER* 124.0 (CTAF) 269.15	GND CON 121.8	UNICOM 122.95
------------------------------	--	---	--------------------------------	--------------------------------

PROTOTYPE-NOT FOR NAVIGATION



CATEGORY	A	B	C 503-3/4 347 738-1 1/4	D
LPV	582 940-2 1/4			
LNAV/VNAV				
LNAV	740-3/4 584		740-1 1/4 584	
CIRCLING	780-1 616	840-1 676 776	1080-3 916	