

Flight Procedures Cover Page	Task Action: Abbreviated Amendment	Task Type: SID	Estimated Chart Date: 05/14/2026	APWS Task ID: D20B6BE70AAC481F9FE145673A231774	APWS Project ID: F1D804EA9DFD4976924ABA5BA10DEB3E
Procedure: GIDGT FOUR DEPARTURE (RNAV)		Enroute: YES	Specialist: Martinez, Rafael		Agreement Number:
Airport ID: KLAS			Airport City: LAS VEGAS		State: NV
Facility ID:	Facility Type:	Flight Inspection Remark Type:			

Procedure Comments:

TAKEOFF RWY 1L/R CHANGED INTERCEPT COURSE TO KYBAD FROM 068.48 TO 072.00.
REMOVED RUNWAYS 19L/R, 26L/R SPEED RESTRICTION AT OR BELOW 210 KIAS AT LEELN.

CONTACT: BEV L BORDY 405-954-8293/CASIMIR TABAKA 405-954-7931.

PROCESSED IAW TECHNICAL SUPPORT GROUP (AJF-17) MEMO DATED 07/07/2021, SUBJECT: GUIDANCE FOR PROCEDURAL CHANGES REQUIRING FLIGHT INSPECTION VALIDATION.



OLD

SW-4, 22 JAN 2026 to 19 FEB 2026

(GIDGT3.GIDGT) 07AUG25

GIDGT THREE DEPARTURE (RNAV) Departure Routes

LAS VEGAS, NEVADA
HARRY REID INTL (LAS)

LAS VEGAS DEP CON
133.95 353.7
D-ATIS
132.4
CLNC DEL
118.0
CPDLC
GND CON
121.1 270.8 E of 1R/19L
121.9 254.3 W of 1L/19R
LAS VEGAS TOWER
118.75 257.8 (Rwys 1L/19R, 1R/19L)
119.9 257.8 (Rwys 8L/26R, 8R/26L)

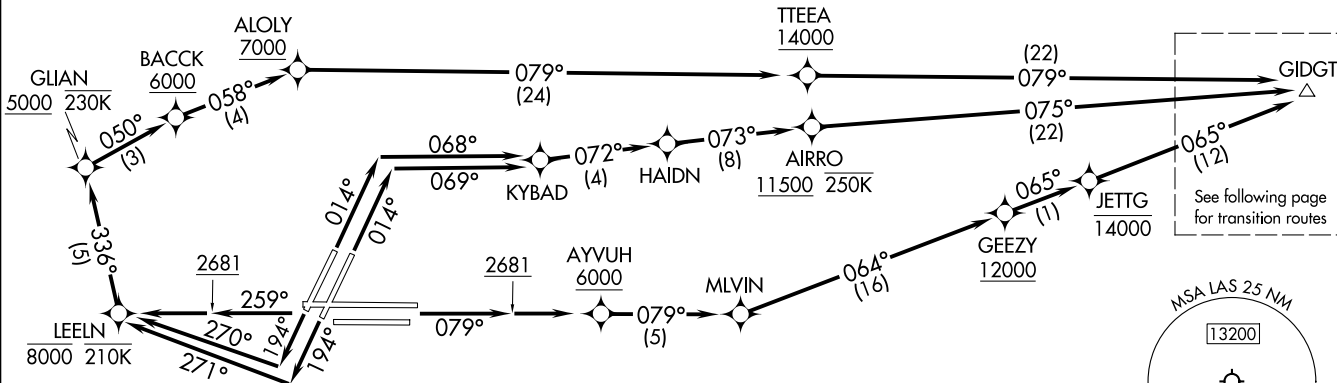
RNAV 1 - DME/DME/IRU or GPS.
RADAR required for non-GPS equipped aircraft.

TOP ALTITUDE:
FL190



TAKEOFF MINIMUMS

Rwy 1L: Standard with minimum climb of 500'/NM to 2681, then 286'/NM to 4900.
Rwy 1R: Standard with minimum climb of 500'/NM to 2681, then 295'/NM to 4900.
Rwys 8L/R, 19L/R: Standard with minimum climb of 500'/NM to 2681.
Rwy 26L: Standard with minimum climb of 500'/NM to 2681, then 204'/NM to 4100.
Rwy 26R: Standard with minimum climb of 500'/NM to 2681, then 271'/NM to 4100.



NOTE: Turbojet only.
NOTE: SSKEE and IWANS Transition assigned by ATC - do not file.

NOTE: Chart not to scale.

(CONTINUED ON FOLLOWING PAGE)

(GIDGT3.GIDGT) 25247

Departure Routes

AL-662 (FAA)

HARRY REID INTL (LAS)
LAS VEGAS, NEVADA

SW-4, 22 JAN 2026 to 19 FEB 2026

OLD

SW-4, 22 JAN 2026 to 19 FEB 2026

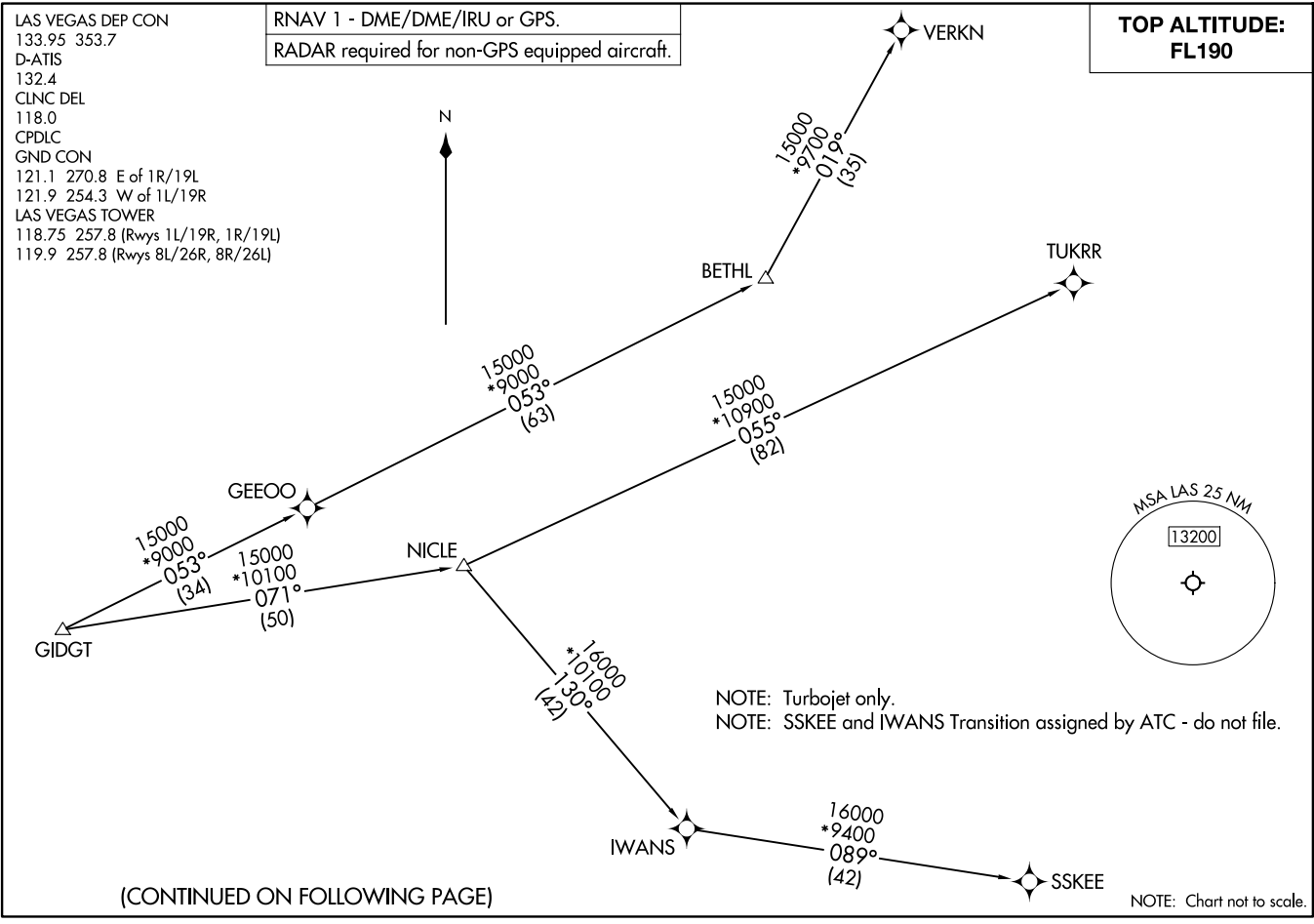
(GIDGT3.GIDGT) 07AUG25
GIDGT THREE DEPARTURE (RNAV) Transition Routes
LAS VEGAS, NEVADA
HARRY REID INTL (LAS)

LAS VEGAS DEP CON
133.95 353.7
D-ATIS
132.4
CLNC DEL
118.0
CPDLC
GND CON
121.1 270.8 E of 1R/19L
121.9 254.3 W of 1L/19R
LAS VEGAS TOWER
118.75 257.8 (Rwys 1L/19R, 1R/19L)
119.9 257.8 (Rwys 8L/26R, 8R/26L)

RNAV 1 - DME/DME/IRU or GPS.
RADAR required for non-GPS equipped aircraft.

TOP ALTITUDE:
FL190

(GIDGT3.GIDGT) 25247
GIDGT THREE DEPARTURE (RNAV) Transition Routes
Al-662 (FAA)
HARRY REID INTL (LAS)
LAS VEGAS, NEVADA



NOTE: Turbojet only.
NOTE: SSKEE and IWANS Transition assigned by ATC - do not file.

(CONTINUED ON FOLLOWING PAGE)

NOTE: Chart not to scale.

SW-4, 22 JAN 2026 to 19 FEB 2026



DEPARTURE ROUTE DESCRIPTION

TAKEOFF RUNWAY 1L: Climb on heading 014° to intercept course 068° to KYBAD, then on track 072° to HAIDN, then on track 073° to cross AIRRO at or above 11500 and at or below 250K, then on track 075° to GIDGT, thence. . . .

TAKEOFF RUNWAY 1R: Climb on heading 014° to intercept course 069° to KYBAD, then on track 072° to HAIDN, then on track 073° to cross AIRRO at or above 11500 and at or below 250K, then on track 075° to GIDGT, thence. . . .

TAKEOFF RUNWAYS 8L/R: Climb on heading 079° to 2681, then direct to cross AYVUH at or above 6000, then on track 079° to MLVIN, then on track 064° to cross GEEZY at or above 12000, then on track 065° to cross JETTG at or below 14000, then on track 065° to GIDGT, thence. . . .

TAKEOFF RUNWAY 19L: Climb on heading 194° to intercept course 271° to cross LEELN at or below 8000 and at or below 210K, then on track 336° to cross GLIAN at or above 5000 and at or below 230K, then on track 050° to cross BACCK at or above 6000, then on track 058° to cross ALOLY at or above 7000, then on track 079° to cross TTEEA at or above 14000, then on track 079° to GIDGT, thence. . . .

TAKEOFF RUNWAY 19R: Climb on heading 194° to intercept course 270° to cross LEELN at or below 8000 and at or below 210K, then on track 336° to cross GLIAN at or above 5000 and at or below 230K, then on track 050° to cross BACCK at or above 6000, then on track 058° to cross ALOLY at or above 7000, then on track 079° to cross TTEEA at or above 14000, then on track 079° to GIDGT, thence. . . .

TAKEOFF RUNWAYS 26L/R: Climb on heading 259° to 2681, then direct to cross LEELN at or below 8000 and at or below 210K, then on track 336° to cross GLIAN at or above 5000 and at or below 230K, then on track 050° to cross BACCK at or above 6000, then on track 058° to cross ALOLY at or above 7000, then on track 079° to cross TTEEA at or above 14000, then on track 079° to GIDGT, thence. . . .

. . . .on (transition). Maintain FL190. Expect filed altitude 10 minutes after departure.

IWANS TRANSITION (GIDGT3.IWANS)

SSKEE TRANSITION (GIDGT3.SSKEE)

TUKRR TRANSITION (GIDGT3.TUKRR)

VERKN TRANSITION (GIDGT3.VERKN)