

Flight Procedures Cover Page	Task Action: FLIGHT CHECK	Task Type: IAP	Estimated Chart Date: 09/03/2026	APWS Task ID: D27BA454C0D345B79C844A5C3E71A92B	APWS Project ID: 16F47EBCB52A4673A3B1DEFC4FB85654
Procedure: RNAV (GPS) RWY 7 AMDT 1C		Enroute: NO	Specialist: Weston, Daniel		Agreement Number:
Airport ID: PASX			Airport City: SOLDOTNA		State: AK
Facility ID:	Facility Type:	Flight Inspection Remark Type: New FC Slot			

Procedure Comments:
ACTIVE AIRNAV DATA USED.

20:1 OBSTACLE REMOVED, ADDING NIGHT EVAL.

CRC REMAINDER UPDATED FROM E9E4BC35 TO 2056B060.

CONTACT RAKE MCGRAW 405-954-8711.



WAAS CH XXXX XXX	APP CRS 075°	Rwy Idg 5001 TDZE 102 APT Elev 113
------------------------	------------------------	---

RNAV (GPS) RWY 7

SOLDOTNA (PASX)

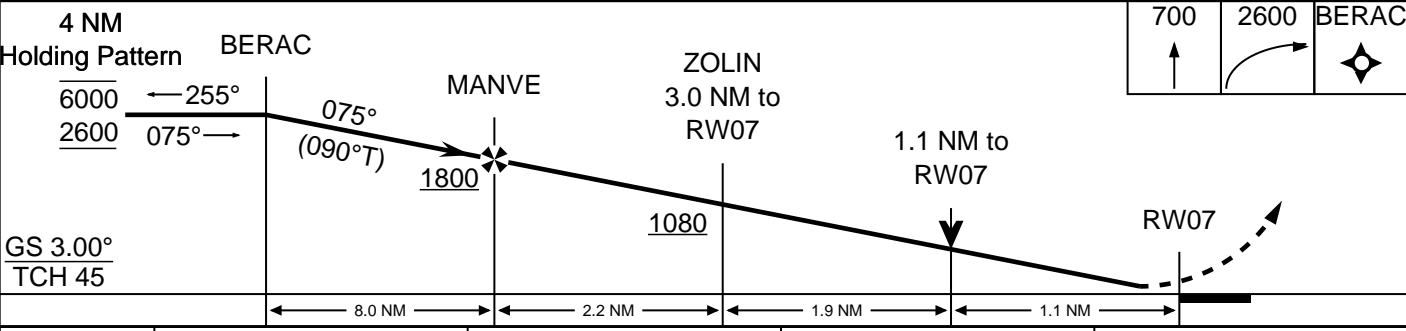
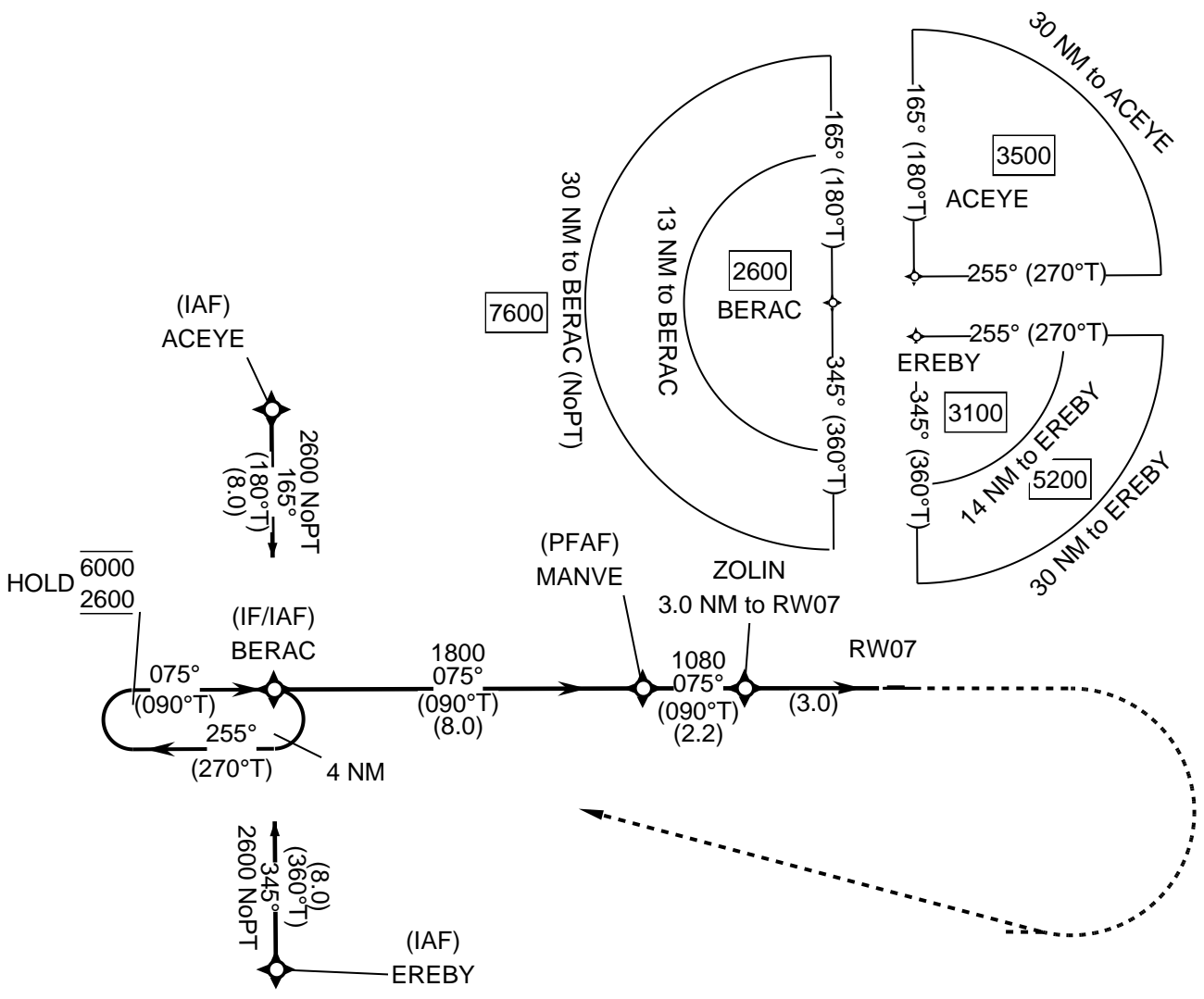
RNP APCH - GPS.

MISSED APPROACH: CLIMB TO 700 THEN CLIMBING RIGHT TURN TO 2600 DIRECT BERAC AND HOLD.

RWY 7 HELICOPTER VISIBILITY REDUCTION BELOW 3/4 SM NOT AUTHORIZED. CIRCLING NA TO RWYS 7S AND 25S.

AWOS-3P 135.45	ANCHORAGE CENTER 125.7 379.1	KENAI RADIO 122.35	CTAF 122.5
-------------------	---------------------------------	-----------------------	---------------

PROTOTYPE-NOT FOR NAVIGATION



CATEGORY	A	B	C	D
LP	480-1 378			
LNAV	640-1 538		640-1 1/2 538	
CIRCLING	740-1 627	820-1 707	820-2 707	980-2 3/4 867

WAAS CH 45942 W07A	APP CRS 075°	Rwy Ldg TDZE Apt Elev	5001 102 113
--	------------------------	-----------------------------	---

OLD

RNAV (GPS) RWY 7

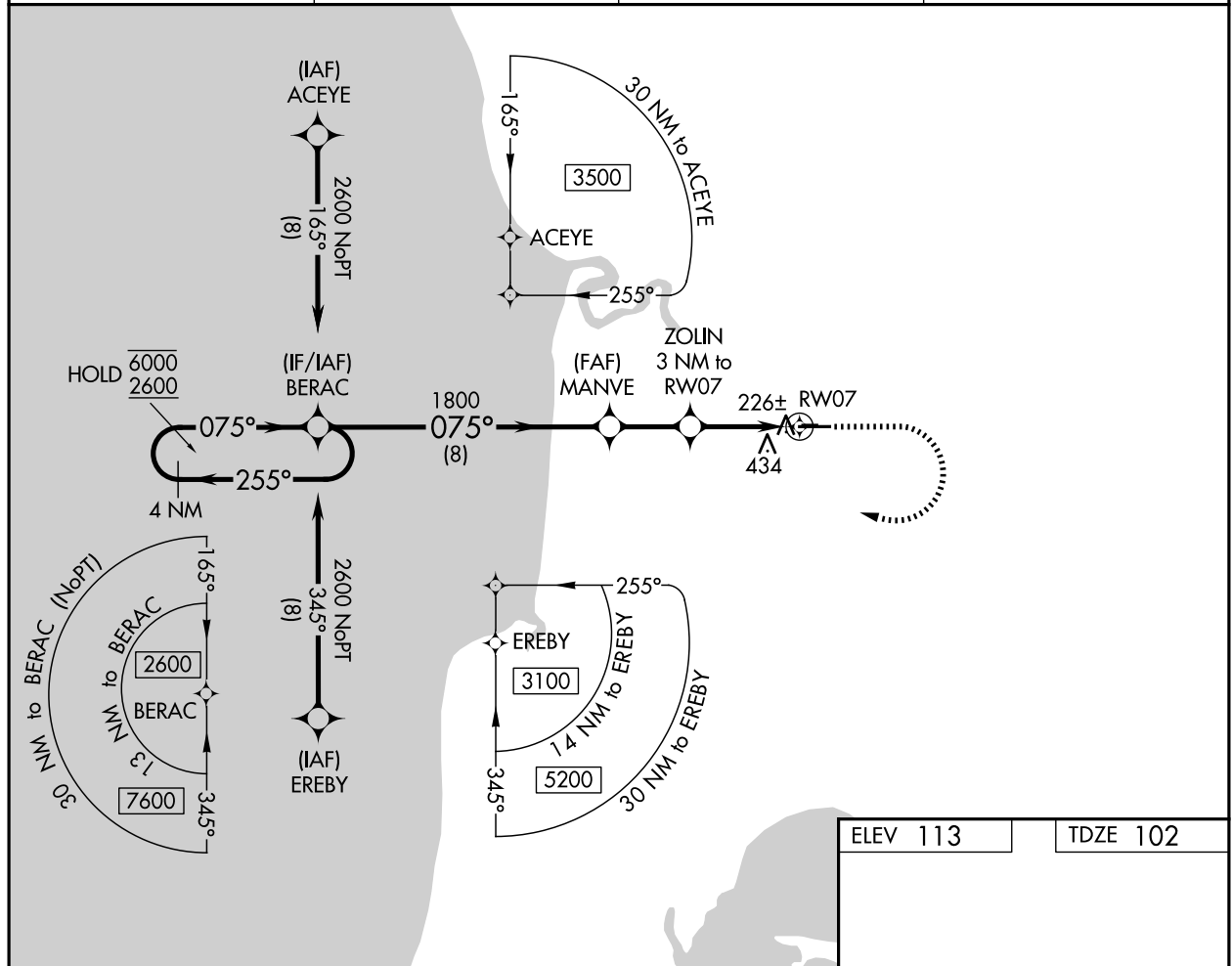
SOLDOTNA (SXQ)(PASX)

RNP APCH - GPS.

▼ Circling NA to Rwy 7S and 25S. Rwy 7 helicopter visibility reduction below 1 SM NA. Rwy 7 Straight-In and Circling minimums NA at night.

▲ MISSED APPROACH: Climb to 700 then climbing right turn to 2600 direct BERAC and hold.

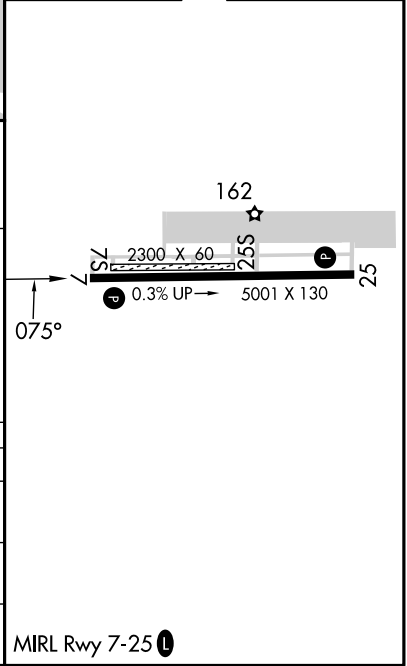
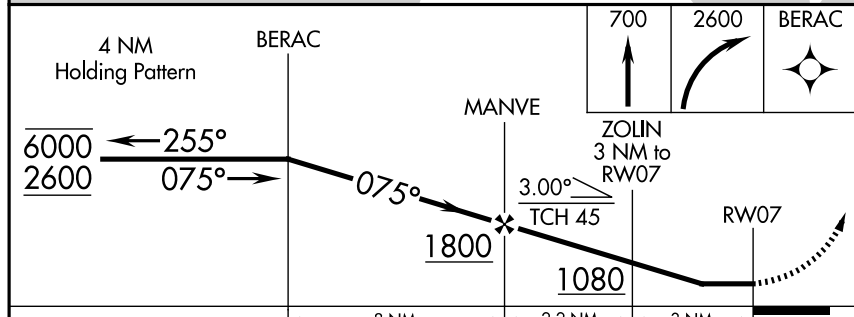
AWOS-3P 135.45	ANCHORAGE CENTER 125.7 379.1	KENAI RADIO 122.35	CTAF 122.5
--------------------------	--	------------------------------	----------------------



AK, 22 JAN 2026 to 19 MAR 2026

AK, 22 JAN 2026 to 19 MAR 2026

ELEV 113	TDZE 102
----------	----------



CATEGORY	A	B	C	D
LP MDA	480-1 378 (400-1)			
LNAV MDA	640-1 538 (600-1)		640-1½ 538 (600-1½)	
CIRCLING	740-1 627 (700-1)	820-1 707 (800-1)	820-2 707 (800-2)	980-2¾ 867 (900-2¾)