



Flight Procedures Cover Page	Task Action: P-NOTAM	Task Type: IAP	Estimated Chart Date: 05/14/2026	APWS Task ID: D2FDA3659F7F476E8F1161709FE32B2C	APWS Project ID: B16C046F8ABE445BA8C73E06FF997C12
Procedure: RNAV (GPS) RWY 29 AMDT 1A		Enroute: NO	Specialist: Burchell, Brandon		Agreement Number:
Airport ID: KSBP			Airport City: SAN LUIS OBISPO		State: CA
Facility ID:	Facility Type:	Flight Inspection Remark Type: New FC Slot			
<p>Procedure Comments: P-NOTAM.</p> <p>RAISE CIRCLING CAT C MDA/HAA 1500/1288 AND CAT D TO 1760/1548. REMOVE CHART CIRCLING ICON.</p> <p>CANCELS T-NOTAM: 5/8780.</p> <p>NFCR. FC W/ ILS OR LOC RWY 11 AT KSBP.</p> <p>PROCESSED IAW TECHNICAL SUPPORT GROUP (AJF-17) MEMO DATED 07/07/2021 GUIDANCE FOR PROCEDURAL CHANGES REQUIRING FLIGHT INSPECTION/VALIDATION.</p> <p>POC: KYLE THOMPSON, AJV A33, 405-954-2135.</p>					
					
					

WAAS CH 53443	APP CRS 290°	Rwy Ldg TDZE 212	5600
W29A		Apt Elev 212	

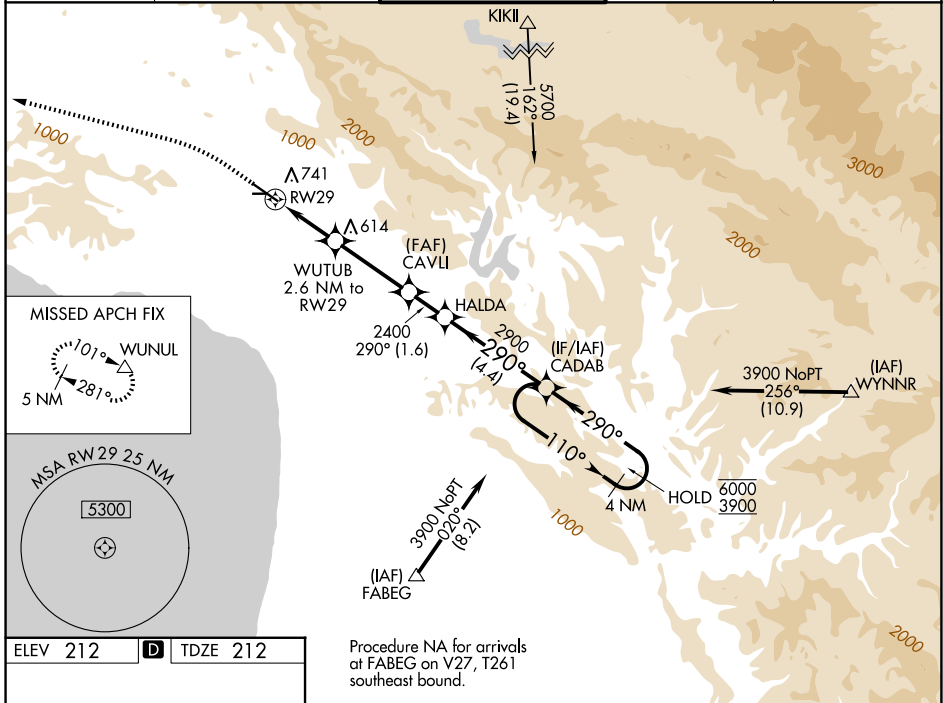
OLD

RNAV (GPS) RWY 29
SAN LUIS OBISPO COUNTY RGNL (SBP)

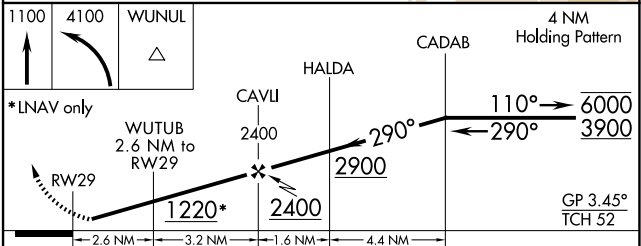
RNP APCH
 ⚠ Circling to Rwy 25 NA at night. Circling NA north of Rwy 11-29.
 ⚠ Rwy 29 helicopter visibility reduction below 3/4 SM NA. For uncompensated Baro-VNAV systems, LNAV/VNAV NA below 0° C or above 52° C.

MISSED APPROACH: Climb to 1100 then climbing left turn to 4100 direct WUNUL and hold, continue climb-in-hold to 4100.

ATIS 120.6	SANTA BARBARA APP CON* 127.725 244.575	SAN LUIS TOWER* 124.0 (CTAF) 0 379.9	GND CON 121.6	UNICOM 122.95
----------------------	--	--	-------------------------	-------------------------



ELEV 212	D	TDZE 212
----------	----------	----------



CATEGORY	A	B	C	D
LPV DA		831-1 ³ / ₄	619 (700-1 ³ / ₄)	
LNAV/VNAV DA		835-1 ³ / ₄	623 (700-1 ³ / ₄)	
LNAV MDA	1000-1 788 (800-1)	1000-1 ¹ / ₄ 788 (800-1 ¹ / ₄)	1000-2 ¹ / ₂ 788 (800-2 ¹ / ₂)	788 (800-2 ¹ / ₂)
CIRCLING	1000-1 788 (800-1)	1220-1 ¹ / ₂ 1008 (1100-1 ¹ / ₂)	1460-3 1248 (1300-3)	1560-3 1348 (1400-3)

SW-3, 30 OCT 2025 to 27 NOV 2025

SW-3, 30 OCT 2025 to 27 NOV 2025