

Flight Procedures Cover Page	Task Action: FLIGHT CHECK	Task Type: IAP	Estimated Chart Date: 05/14/2026	APWS Task ID: D30495D4DEF74B2D99C90A9C0F330188	APWS Project ID: A1357C06227A4AAE954BC7DFDA770292
Procedure: ILS OR LOC RWY 3 AMDT 23		Enroute: NO	Specialist: Ulvestad, Arthur		Agreement Number:
Airport ID: KSJT			Airport City: SAN ANGELO		State: TX
Facility ID: SJT	Facility Type: ILS	Flight Inspection Remark Type: New FC Slot			

Procedure Comments:
ACTIVE AIRPORT DATA USED

WOOLE (SJ) LOM DECOMMISSIONED.

REMOVED FEEDERS FROM SJT VORTAC, TANKR, CHILD, AND EDWAR.

NEW WOOLE FAF FIX

MISSED APP HOLD CHANGED TO FELUV.

CONTACT: RAKE MCGRAW 405-954-8711

QUALITY
9
CHECKED
BEGUE

QUALITY
10
CHECKED

LOC/DME I-SJT 109.7 Chan 34	APP CRS 038°	Rwy Ldg 5940	TDZE 1917
		Apt Elev 1919	

OLD

ILS Y or LOC Y RWY 3 SAN ANGELO RGNL/MATHIS FLD (SJT)

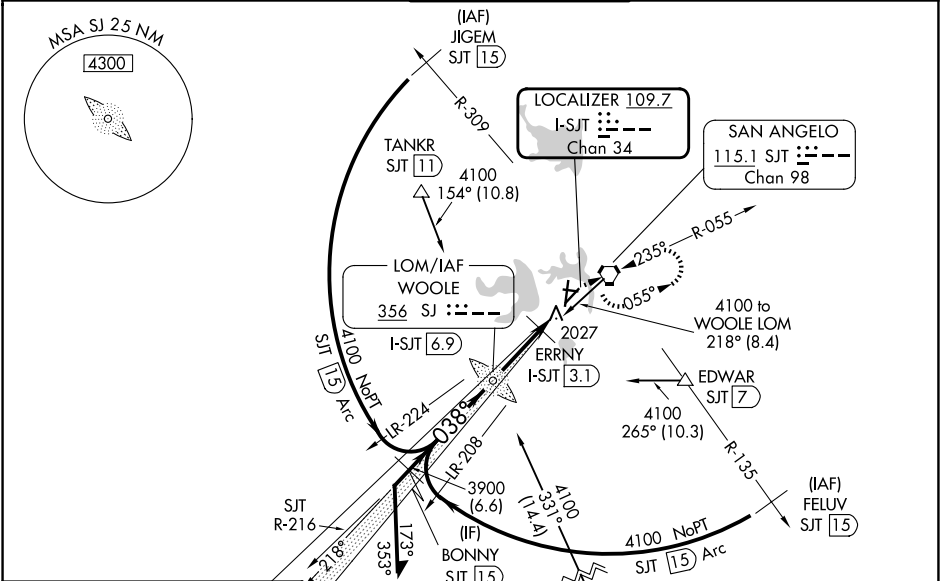
ADF or DME required for procedure entry.

Autopilot coupled approach NA below 2685. For inop ALS, increase S-ILS 3 Cat E visibility to RVR 4000, S-LOC 3 Cat C/D/E visibility to 2 SM. Circling NA for Cat E west of Rwy 18-36. ERRNY DME minimums: For Inop ALS, increase S-LOC 3 Cat C/D/E visibility to RVR 5500.
RVR 1800 authorized with use of FD or AP or HUD to DA.



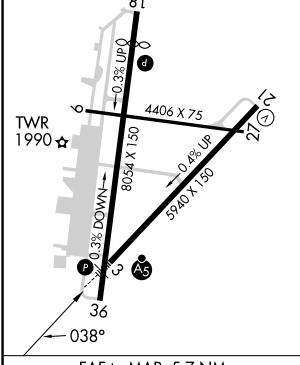
MISSED APPROACH: Climb to 4000 then right turn direct SJT VORTAC and hold.

ATIS 128.45 319.0	SAN ANGELO APP CON * 125.35 354.1	MATHIS TOWER * 118.3 (CTAF) 284.7	GND CON 121.9 348.6	UNICOM 122.95
-----------------------------	---	---	-------------------------------	-------------------------

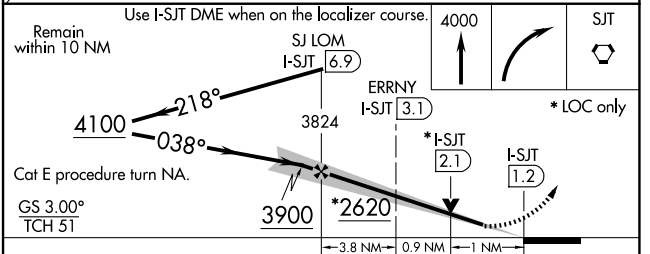


ELEV 1919	TDZE 1917
-----------	-----------

MIRL Rwy 9-27 and 18-36
HIRL Rwy 3-21
REIL Rwy 18



Knots	60	90	120	150	180
Min:Sec	5:42	3:48	2:51	2:17	1:54



CATEGORY	A	B	C	D	E
S-ILS 3 #	2117/24 200 (200-1/2)				
S-LOC 3	2620/24	703 (800-1/2)	2620-1 3/8	703 (800-1 3/8)	
CIRCLING	2620-1	701 (800-1)	2620-2 701 (800-2)	2700-2 1/2 781 (800-2 1/2)	2700-2 3/4 781 (800-2 3/4)
ERRNY DME MINIMUMS					
S-LOC 3	2300/24	383 (400-1/2)	2300/35	383 (400-5/8)	
CIRCLING	2360-1 441 (500-1)	2380-1 461 (500-1)	2500-1 1/2 581 (600-1 1/2)	2700-2 1/2 781 (800-2 1/2)	2700-2 3/4 781 (800-2 3/4)

SC-3, 02 OCT 2025 to 30 OCT 2025

SC-3, 02 OCT 2025 to 30 OCT 2025