

FEDERAL AVIATION ADMINISTRATION
 FLIGHT STANDARDS SERVICE
 STANDARD TERMINAL ARRIVAL (STAR)

Bearings, headings, courses, tracks and radials are magnetic. Elevations and altitudes are in feet, MSL. Altitudes are minimum altitudes unless otherwise indicated.
 Ceilings are in feet above airport elevation. Distances are in nautical miles. Visibilities are in statute miles or feet RVR unless otherwise indicated.

Arrival Name ROKKR (RNAV)	Number THREE	STAR Computer Code ROKKR.ROKKR3	Superseded Number TWO	Dated 03/29/2018	Effective Date
-------------------------------------	------------------------	---	---------------------------------	----------------------------	----------------

TRANSITION ROUTES:

Transition Name	Transition Computer Codes	From FIX/NAVAID	To FIX/NAVAID	Course	Distance	MEA	MOCA	MAA	Crossing Altitudes / Fixes
HIHWY	HIHWY.ROKKR3	HIHWY	HIHWY						BETWEEN FL200 AND FL220
			MAIDD	138.93	09.48	17000	11100	BETWEEN 17000 AND FL190	
			PEPRZ	139.45	12.37	14000	11100	BETWEEN 14000 AND 16000	
			HEVVY	133.91	06.13	11000	9200		
			ROKKR	133.85	03.35	11000	9200	BETWEEN 11000 AND 12000	
HONZK	HONZK.ROKKR3	HONZK	HONZK						AT/ABOVE FL240
			PRPLE	127.78	18.00	17000	9800	BETWEEN FL200 AND FL220	
			XXELL	117.12	09.51	17000	9800	BETWEEN 17000 AND FL190	
			YUTOO	116.39	12.63	14000	9800	BETWEEN 14000 AND 16000	
			TRAVV	108.80	08.50	11000	9800		
PRPLE	PRPLE.ROKKR3	PRPLE	PRPLE						BETWEEN 11000 AND 12000
			XXELL	117.12	09.51	17000	9800	BETWEEN FL200 AND FL220	
			YUTOO	116.39	12.63	14000	9800	BETWEEN 17000 AND FL190	
			TRAVV	108.80	08.50	11000	9800	BETWEEN 14000 AND 16000	
			ROKKR	098.32	03.79	11000	9200	BETWEEN 11000 AND 12000	
RDHOT	RDHOT.ROKKR3	RDHOT	RDHOT						BETWEEN FL200 AND FL220
			IGGY	127.49	24.00	17000	9800	AT/ABOVE FL240	
			HONZK	127.67	14.37	17000	9800	AT/ABOVE FL240	
			PRPLE	127.78	18.00	17000	9800	BETWEEN FL200 AND FL220	
			XXELL	117.12	09.51	17000	9800	BETWEEN 17000 AND FL190	
			YUTOO	116.39	12.63	14000	9800	BETWEEN 14000 AND 16000	
			TRAVV	108.80	08.50	11000	9800		
			ROKKR	098.32	03.79	11000	9200	BETWEEN 11000 AND 12000	
REBRG	REBRG.ROKKR3	REBRG	REBRG						
			MMTLY	177.43	19.63	17000	11100		
			CRUUE	161.51	10.98	17000	11100	AT/ABOVE FL290	



FEDERAL AVIATION ADMINISTRATION
 FLIGHT STANDARDS SERVICE
 STANDARD TERMINAL ARRIVAL (STAR)

Bearings, headings, courses, tracks and radials are magnetic. Elevations and altitudes are in feet, MSL. Altitudes are minimum altitudes unless otherwise indicated.
 Ceilings are in feet above airport elevation. Distances are in nautical miles. Visibilities are in statute miles or feet RVR unless otherwise indicated.

Arrival Name	Number	STAR Computer Code	Superseded Number	Dated	Effective Date				
ROKKR (RNAV)	THREE	ROKKR.ROKKR3	TWO	03/29/2018					
Transition Name	Transition Computer Codes	From FIX/NAVAID	To FIX/NAVAID	Course	Distance	MEA	MOCA	MAA	Crossing Altitudes / Fixes
			EEAZY	154.55	15.49	17000	11100		BETWEEN FL240 AND FL290
			HIHWY	130.21	17.04	17000	11100		BETWEEN FL200 AND FL220
			MAIDD	138.93	09.48	17000	11100		BETWEEN 17000 AND FL190
			PEPRZ	139.45	12.37	14000	11100		BETWEEN 14000 AND 16000
			HEVVY	133.91	06.13	11000	9200		
			ROKKR	133.85	03.35	11000	9200		BETWEEN 11000 AND 12000

ARRIVAL ROUTE DESCRIPTION:

FROM ROKKR ON TRACK 133.87/7.43 TO CROSS ZEPPE BETWEEN 9000 AND 10000, THEN ON TRACK 134.21/5.32 TO CROSS IVINS AT OR ABOVE 8000.

LANDING RWY 8: FROM IVINS ON TRACK 125.69/8.50 TO CROSS MIKEI AT 7000. EXPECT ILS OR LOC RWY 8 APPROACH.

LANDING RWY 15: FROM IVINS ON TRACK 083.01/10.58 TO CROSS MAURK AT 6000, THEN ON TRACK 083.01. EXPECT RADAR VECTORS TO FINAL APPROACH COURSE.

LANDING RWY 33: FROM IVINS ON TRACK 125.69/8.50 TO CROSS MIKEI AT 7000, THEN ON TRACK 125.75/6.00 TO CROSS EHUNT AT 6000, THEN ON TRACK 125.75. EXPECT RADAR VECTORS TO FINAL APPROACH COURSE.

PBN REQUIREMENT NOTES:

RNAV 1 - DME/DME/IRU OR GPS

EQUIPMENT REQUIREMENT NOTES:

RADAR REQUIRED

PROCEDURAL DATA NOTES:

NOTE: LANDING BUR EXPECT RUNWAY 8 UNLESS OTHERWISE ASSIGNED BY ATC.

FIXES AND/OR HOLDING PATTERNS:

COMMUNICATIONS:

CHART: BOB HOPE ATCT

AIRPORTS SERVED:

AIRPORT ID
BUR

CITY
BURBANK

STATE
CA

LOST COMMUNICATIONS PREFERENCES:

REMARKS:



FEDERAL AVIATION ADMINISTRATION
 FLIGHT STANDARDS SERVICE
 STANDARD TERMINAL ARRIVAL (STAR)

Bearings, headings, courses, tracks and radials are magnetic. Elevations and altitudes are in feet, MSL. Altitudes are minimum altitudes unless otherwise indicated.
 Ceilings are in feet above airport elevation. Distances are in nautical miles. Visibilities are in statute miles or feet RVR unless otherwise indicated.

Arrival Name	Number	STAR Computer Code	Superseded Number	Dated	Effective Date
ROKKR (RNAV)	THREE	ROKKR.ROKKR3	TWO	03/29/2018	

ADDITIONAL FLIGHT DATA:

DME/DME ASSESSMENT: SAT (RNP 2.0)
 MAG VAR: KBUR 12E/2020
 CHART AT MIKEI TERMINUS: KBUR LDG RWY 8
 CHART AT EHUNT TERMINUS: KBUR LDG RWY 33
 CHART AT MAURK TERMINUS: KBUR LDG RWY 15

FLIGHT INSPECTED BY:

CHRISTOPHER R VANDEVEER

ORGANIZATION:

AJF

DATE:

11/22/2024

Flight Inspected Signature:

Digitally signed by

ALLAN WILL

Dec 18, 2024

Digitally signed by

ALLAN WILL

Dec 18, 2024

Digitally signed by

ALLAN WILL

Dec 18, 2024

DEVELOPED BY:

Fernando Salazar

ZLA ARTCC

06/21/2023

Developed By Signature:

APPROVED BY:

ALLAN WILL

AJV-A423

Approved By Signature:

CHANGES:

1. MOVED HEVVY WAYPOINT (WP) 3770 FT NE.
2. MOVED ROKKR WP 1.02 NM NE.
3. MOVED ZEPPE WP 3201 FT NE.
4. ADDED IGGYY WP WITH SPEED RESTRICTION OF AT 280 KIAS AND ALTITUDE RESTRICTION OF AT OR ABOVE FL240.
5. ADDED SPEED RESTRICTION OF AT 280 KIAS AT HONZK WP.
6. ADDED RNAV 1-DME/DME/IRU OR GPS REQUIRED TO PBN REQUIREMENT NOTES; REMOVED NOTE: RNAV 1 AND NOTE: DME/DME/IRU OR GPS REQUIRED FROM PROCEDURAL DATA NOTES.
7. ADDED RADAR REQUIRED TO EQUIPMENT REQUIREMENT NOTES; REMOVED NOTE: RADAR REQUIRED FROM PROCEDURAL DATA NOTES.
8. DELETED D-ATIS FROM COMMUNICATIONS.
9. ADDED ALL TERMINUS DATA TO ADDITIONAL FLIGHT DATA.
10. MOCAS UPDATED.
11. REMOVED DO NOT CHART MOCAS.
12. REMOVED RECOMMENDED NAVAID FROM 17.2 FORM.

REASONS:

- 1-3. ATC REQUEST TO ALIGN POINTS AND STRAIGHTEN ARRIVAL ROUTE.
4. ATC REQUEST TO ACHIEVE 5 NM SEPARATION FROM KLAX ZUUMA RNAV STAR.
5. ATC REQUEST TO IMPROVE TIME BASED FLOW MANAGEMENT ACCURACY BETWEEN AIRCRAFT ON MULTIPLE LA BASIN PROCEDURES AND REDUCE TRANSMISSIONS.
- 6-8. IAW 8260.19J DOCUMENTATION STANDARDS.
9. IAW FAAO 8260.19J 4-5-2 h (2) STAR TERMINUS DATA.



FEDERAL AVIATION ADMINISTRATION
FLIGHT STANDARDS SERVICE
STANDARD TERMINAL ARRIVAL (STAR)

Bearings, headings, courses, tracks and radials are magnetic. Elevations and altitudes are in feet, MSL. Altitudes are minimum altitudes unless otherwise indicated.
Ceilings are in feet above airport elevation. Distances are in nautical miles. Visibilities are in statute miles or feet RVR unless otherwise indicated.

Arrival Name	Number	STAR Computer Code	Superseded Number	Dated	Effective Date
ROKKR (RNAV)	THREE	ROKKR.ROKKR3	TWO	03/29/2018	

- 10. NEW DME/DME ASSESSMENT AND NEW TERRAIN/OBSTACLE ANALYSIS.
- 11. MOCAS MUST BE CHARTED.
- 12. NO LONGER REQUIRED.

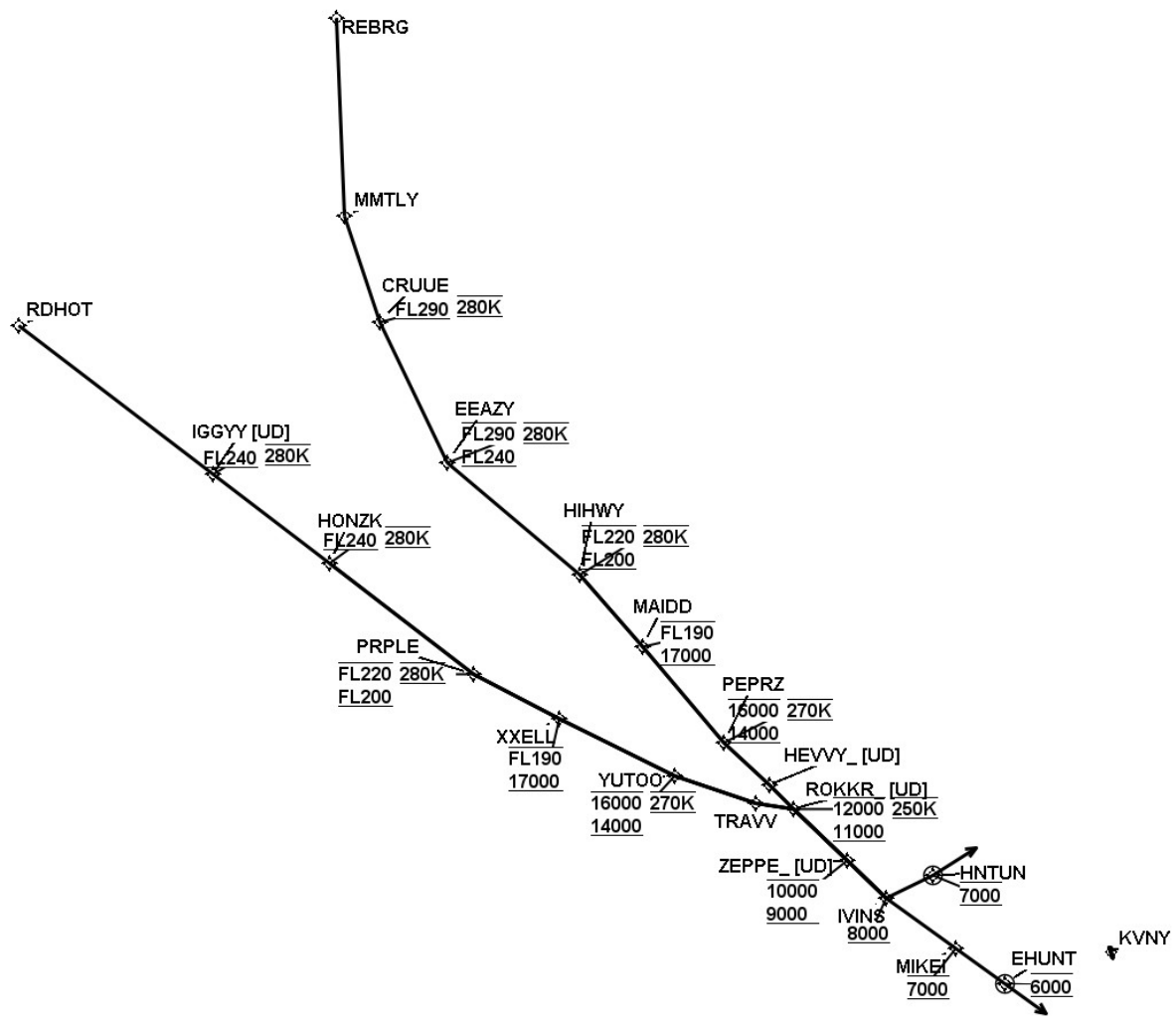


FEDERAL AVIATION ADMINISTRATION
 FLIGHT STANDARDS SERVICE
 STANDARD TERMINAL ARRIVAL (STAR)

Bearings, headings, courses, tracks and radials are magnetic. Elevations and altitudes are in feet, MSL. Altitudes are minimum altitudes unless otherwise indicated.
 Ceilings are in feet above airport elevation. Distances are in nautical miles. Visibilities are in statute miles or feet RVR unless otherwise indicated.

Arrival Name	Number	STAR Computer Code	Superseded Number	Dated	Effective Date
ROKKR (RNAV)	THREE	ROKKR.ROKKR3	TWO	03/29/2018	

Graphic Depiction 1



FEDERAL AVIATION ADMINISTRATION
 FLIGHT STANDARDS SERVICE
 STAR (DATA RECORD)

Arrival Name ROKKR (RNAV)	Number THREE	STAR Computer Code ROKKR.ROKKR3		Superseded Number TWO		Dated 03/29/2018	Effective Date		
FIX/NAVAID	LAT/LONG	C	FO/FB	LEG TYPE	TC	DIST (NM)	ALTITUDE	SPEED	REMARKS
En Route Transition									
HIHWY	345958.59N / 1192212.26W	Y		IF			FL200BFL220	AT 280K	HIHWY.ROKKR3
MAIDD	345140.67N / 1191636.53W	Y	FB	TF	150.93	09.48	17000BFL190		
PEPRZ	344047.34N / 1190926.41W	Y	FB	TF	151.45	12.37	14000B16000	AT 270K	
HEVVY	343541.99N / 1190516.59W	Y	FB	TF	145.91	06.13			
ROKKR	343255.36N / 1190300.00W	Y	FB	TF	145.85	03.35	11000B12000	AT 250K	
En Route Transition									
HONZK	350616.49N / 1195113.84W	Y		IF			AT/ABOVE FL240	AT 280K	HONZK.ROKKR3
PRPLE	345229.65N / 1193706.29W	Y	FB	TF	139.78	18.00	FL200BFL220	AT 280K	
XXELL	344628.51N / 1192808.66W	Y	FB	TF	129.12	09.51	17000BFL190		
YUTOO	343836.46N / 1191608.63W	Y	FB	TF	128.39	12.63	14000B16000	AT 270K	
TRAVV	343414.54N / 1190718.13W	Y	FB	TF	120.80	08.50			
ROKKR	343255.36N / 1190300.00W	Y	FB	TF	110.32	03.79	11000B12000	AT 250K	
En Route Transition									
PRPLE	345229.65N / 1193706.29W	Y		IF			FL200BFL220	AT 280K	PRPLE.ROKKR3
XXELL	344628.51N / 1192808.66W	Y	FB	TF	129.12	09.51	17000BFL190		
YUTOO	343836.46N / 1191608.63W	Y	FB	TF	128.39	12.63	14000B16000	AT 270K	
TRAVV	343414.54N / 1190718.13W	Y	FB	TF	120.80	08.50			
ROKKR	343255.36N / 1190300.00W	Y	FB	TF	110.32	03.79	11000B12000	AT 250K	
En Route Transition									
RDHOT	353533.31N / 1202136.43W	Y		IF					RDHOT.ROKKR3
IGGY	351715.30N / 1200233.80W	Y	FB	TF	139.49	24.00	AT/ABOVE FL240	AT 280K	
HONZK	350616.49N / 1195113.84W	Y	FB	TF	139.67	14.37	AT/ABOVE FL240	AT 280K	
PRPLE	345229.65N / 1193706.29W	Y	FB	TF	139.78	18.00	FL200BFL220	AT 280K	
XXELL	344628.51N / 1192808.66W	Y	FB	TF	129.12	09.51	17000BFL190		
YUTOO	343836.46N / 1191608.63W	Y	FB	TF	128.39	12.63	14000B16000	AT 270K	



FEDERAL AVIATION ADMINISTRATION
 FLIGHT STANDARDS SERVICE
 STAR (DATA RECORD)

Arrival Name ROKKR (RNAV)	Number THREE	STAR Computer Code ROKKR.ROKKR3		Superseded Number TWO		Dated 03/29/2018	Effective Date		
FIX/NAVAID	LAT/LONG	C	FO/FB	LEG TYPE	TC	DIST (NM)	ALTITUDE	SPEED	REMARKS
TRAVV	343414.54N / 1190718.13W	Y	FB	TF	120.80	08.50			
ROKKR	343255.36N / 1190300.00W	Y	FB	TF	110.32	03.79	11000B12000	AT 250K	
En Route Transition									
REBRG	355853.00N / 1193653.00W	Y		IF					REBRG.ROKKR3
MMTLY	353929.51N / 1194049.65W	Y	FB	TF	189.43	19.63			
CRUUE	352834.02N / 1193918.55W	Y	FB	TF	173.51	10.98	AT/ABOVE FL290	AT 280K	
EEAZY	351328.56N / 1193454.76W	Y	FB	TF	166.55	15.49	FL240BFL290	AT 280K	
HIHWY	345958.59N / 1192212.26W	Y	FB	TF	142.21	17.04	FL200BFL220	AT 280K	
MAIDD	345140.67N / 1191636.53W	Y	FB	TF	150.93	09.48	17000BFL190		
PEPRZ	344047.34N / 1190926.41W	Y	FB	TF	151.45	12.37	14000B16000	AT 270K	
HEVVY	343541.99N / 1190516.59W	Y	FB	TF	145.91	06.13			
ROKKR	343255.36N / 1190300.00W	Y	FB	TF	145.85	03.35	11000B12000	AT 250K	
Common Route									
ROKKR	343255.36N / 1190300.00W	Y		IF			11000B12000	AT 250K	ROKKR.ROKKR3
ZEPPE	342645.66N / 1185757.62W	Y	FB	TF	145.87	07.43	9000B10000		
IVINS	342219.84N / 1185423.15W	Y	FB	TF	146.21	05.32	AT/ABOVE 8000		
Runway Transition									
IVINS	342219.84N / 1185423.15W	Y		IF			AT/ABOVE 8000		
MIKEI	341601.86N / 1184728.90W	Y	FB	TF	137.69	08.50	AT 7000		
KBUR:RWY 8									
Runway Transition									
IVINS	342219.84N / 1185423.15W	Y		IF			AT/ABOVE 8000		
MAURK	342123.60N / 1184139.00W	Y	FO	TF	095.01	10.58	AT 6000		
KBUR:RWY 15									
				FM	095.01				



FEDERAL AVIATION ADMINISTRATION
 FLIGHT STANDARDS SERVICE
 STAR (DATA RECORD)

Arrival Name	Number	STAR Computer Code	Superseded Number	Dated	Effective Date				
ROKKR (RNAV)	THREE	ROKKR.ROKKR3	TWO	03/29/2018					
<u>FIX/NAVAID</u>	<u>LAT/LONG</u>	<u>C</u>	<u>FO/FB</u>	<u>LEG TYPE</u>	<u>TC</u>	<u>DIST (NM)</u>	<u>ALTITUDE</u>	<u>SPEED</u>	<u>REMARKS</u>
Runway Transition									
IVINS	342219.84N / 1185423.15W	Y		IF			AT/ABOVE 8000		
MIKEI	341601.86N / 1184728.90W	Y	FB	TF	137.69	08.50	AT 7000		
EHUNT	341134.81N / 1184237.13W	Y	FO	TF	137.75	06.00	AT 6000		
KBUR:RWY 33				FM	137.75				

