

## DME DME Assessment Results for ROKKR3 path IVINS\_MAUWK

### Results Summary

Flyability:	Completed
DME/DME:	Completed - No Critical DMEs
Name:	Jeanette CTR Roller
Project File:	C:\Users\Jeanette CTR Roller\Desktop\KVNY EPS Submission\KVNY STARs DME DME.tgs
Output File:	C:\Users\Jeanette CTR Roller\Desktop\KVNY EPS Submission\ROKKR3\KBUR [IFPA] ROKKR3 20230621_1601 MDT\IVINS_MAUWK\KBUR ROKKR3 RNAV STAR IVINS MAURK 20230621_1601 MDT.pdf
Procedure Name:	ROKKR3
Software: DmeDmePlugin:	7.1.0
Date/Time:	06/21/2023 16:01 MDT
Databases:	DTED Level 0 Max

### Failures

No Failures

### Warnings

No Warnings

### Informational

No Informational

### Notes For Flight Check

None

### Flight Plan

Name	Type	Lat/Lon	Altitude (ft)	VNAV Mode	Ground Speed (kts)	Turn Type	Leg Type
IVINS	WP	N34° 22' 19.84", W118° 54' 23.15"	8000	VNAV	250	FLY_BY	TF
MAURK	WP	N34° 21' 23.60", W118° 41' 39.00"	6000	VNAV	250	FLY_OVER	TF

### Flyability

Flight Type:	RNAV_STAR
Selected Airport:	KBUR [IFPA]
Climb Gradient:	None assigned
Speeds:	200 Ground Speed to 11000 FT
	240 Ground Speed to 18000 FT
	260 Ground Speed to 24000 FT
	340 Ground Speed above 24000 FT
Descent During a Turn:	Allowed
VNAV Mode:	Flight Plan

## DME DME Assessment Results for ROKKR3 path IVINS\_MAUWK

DME/DME	
RNP:	RNP 2
Flight Mode:	Manual
Line of Sight (DTED Level 0 Max):	Evaluated
Inertial Drift:	Enabled
Initial Drift:	0.558 NM
INS Drift Rate:	8.0 NM/Hour
Range Mode:	OSV
RNP Edges:	Evaluated
Min DME Range:	3.0 NM
DME Types:	DME, VOR-DME, VORTAC
DME Include Angles:	30 to 150
Critical DMEs:	Allowed
DoD Facilities:	Not included
Foreign Facilities:	Not included
High DMEs:	Included
Low DMEs:	Included
Terminal DMEs:	Included
Flight Check DMEs:	Not selected
Higher Altitudes:	Not Evaluated
Near Maximum Altitude:	Not Evaluated
Automatic ESVs:	Not enabled
Disabled DMEs:	None

DME/DME (Continued)										
DMEs Used										
#	Name	Lat/Lon	MAGVAR	Range	Type	Source	Critical	Status	Time	Distance
1	FIM	N34° 21' 24.10", W118° 52' 52.65"	15.0 E	40	L	IFPA	NO	Enabled	59.5 %	59.5 %
2	VTU	N34° 06' 53.72", W119° 02' 57.00"	15.0 E	40	L	IFPA	NO	Enabled	100 %	100 %
3	VNY	N34° 13' 26.48", W118° 29' 30.21"	15.0 E	40	L	IFPA	NO	Enabled	100 %	100 %
4	LHS	N34° 40' 58.70", W118° 34' 36.98"	15.0 E	130	H	IFPA	NO	Enabled	56.9 %	56.9 %
5	GMN	N34° 48' 14.50", W118° 51' 40.90"	16.0 E	40	L	IFPA	NO	Enabled	9.8 %	9.8 %
6	LAX	N33° 55' 59.34", W118° 25' 55.25"	15.0 E	130	H	IFPA	NO	Enabled	100 %	100 %
7	CMA	N34° 12' 45.08", W119° 05' 39.68"	15.0 E	40	L	IFPA	NO	Enabled	20.9 %	20.9 %

Flight Check DME Selection						
Distance [NM]	Selected DMEs					Alternate
0.0	VTU	VNY	LAX	LHS		
3.9	VTU	VNY	LAX			
4.3	VTU	VNY	LAX	FIM		
6.4	CMA	LAX	VTU	VNY	FIM	
8.7	VTU	VNY	LAX	LHS	FIM	

Inertial Drift Segments			
#	Start Location	End Location	Length [NM]

Available DMEs by Waypoints			
Waypoint Before	Waypoint After	DME List	Suggested DMEs
IVINS	MAURK	VNY, LAX, VTU, LHS, CMA, GMN, FIM	

**DME DME Assessment Results for ROKKR3 path IVINS\_MAUWK**

**User Data Files**

#	File Name
---	-----------

None

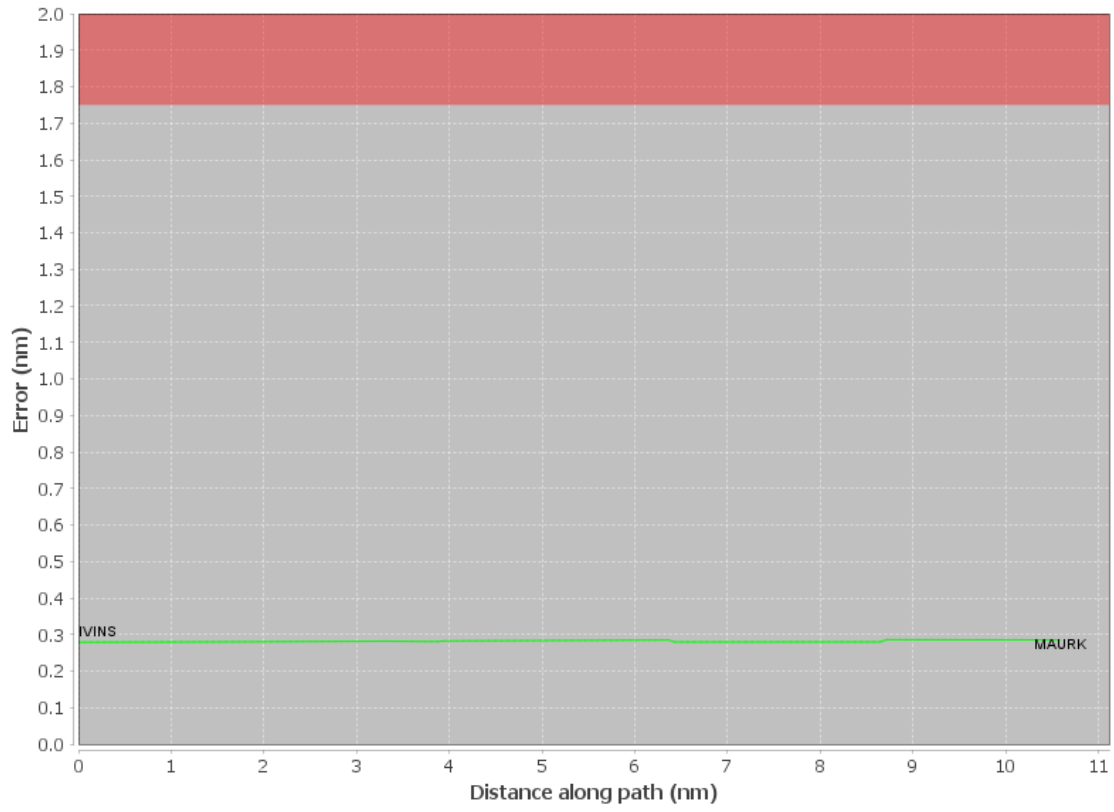
**User DMEs**

#	Name	Lat/Lon	MAGVAR	Range	Elevation [ft]	Frequency	Replaces	Status
1	EHF FAA 704210-18 EHF [IFPA]	N35° 29' 04.40", W119° 05' 50.26"	14.0 E	130	549.2	115.4	EHF FAA 704210-18	

ESV:	Bearing [True]: 189.0° to 258.0° Bearing [Mag]: 175.0° to 244.0°	Arc Distance: Out to 67.0 NM Altitude: 12000.0 to 16000.0 ft
------	---	---

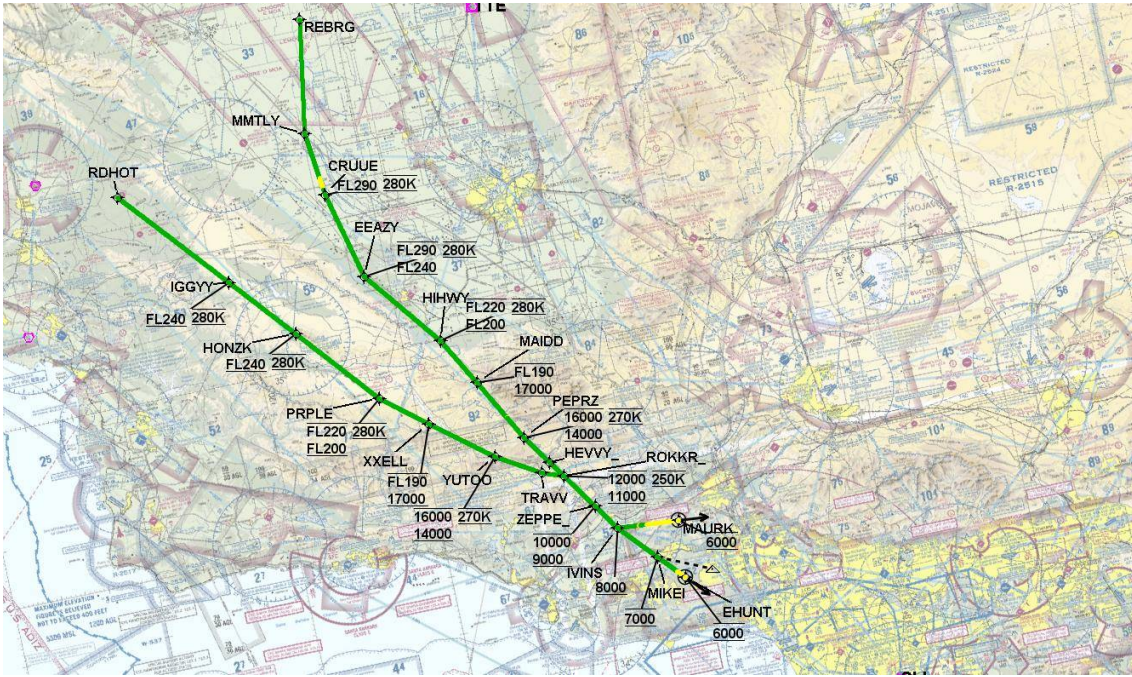
# DME DME Assessment Results for ROKKR3 path IVINS\_MAUARK

## DME Error



# DME DME Assessment Results for ROKKR3 path IVINS\_MAUWK

Graphic Depiction 1



## DME DME Assessment Results for ROKKR3 path RDHOT\_ROKKR\_

### Results Summary

Flyability:	Completed
DME/DME:	Completed - No Critical DMEs
Name:	Jeanette CTR Roller
Project File:	C:\Users\Jeanette CTR Roller\Desktop\KVNY EPS Submission\KVNY STARs DME DME.tgs
Output File:	C:\Users\Jeanette CTR Roller\Desktop\KVNY EPS Submission\ROKKR3\KBUR [IFPA] ROKKR3 20230621_1601 MDT\RDHOT_ROKKR_KBUR ROKKR3 RNAV STAR RDHOT ROKKR 20230621_1601 MDT.pdf
Procedure Name:	ROKKR3
Software: DmeDmePlugin:	7.1.0
Date/Time:	06/21/2023 16:01 MDT
Databases:	DTED Level 0 Max

### Failures

No Failures

### Warnings

No Warnings

### Informational

No Informational

### Notes For Flight Check

None

### Flight Plan

Name	Type	Lat/Lon	Altitude (ft)	VNAV Mode	Ground Speed (kts)	Turn Type	Leg Type
RDHOT	WP	N35° 35' 33.31", W120° 21' 36.43"	17000	VNAV	280	FLY_BY	TF
IGGYY	WP	N35° 17' 15.30", W120° 02' 33.80"	17000	VNAV	280	FLY_BY	TF
HONZK	WP	N35° 06' 16.49", W119° 51' 13.84"	17000	VNAV	280	FLY_BY	TF
PRPLE	WP	N34° 52' 29.65", W119° 37' 06.29"	17000	VNAV	280	FLY_BY	TF
XXELL	WP	N34° 46' 28.51", W119° 28' 08.66"	17000	VNAV	280	FLY_BY	TF
YUTOO	WP	N34° 38' 36.46", W119° 16' 08.63"	14000	VNAV	270	FLY_BY	TF
TRAVV	WP	N34° 34' 14.54", W119° 07' 18.13"	11000	VNAV	270	FLY_BY	TF
ROKKR_	WP	N34° 32' 55.36", W119° 03' 00.00"	11000	VNAV	250	FLY_BY	TF

### Flyability

Flight Type:	RNAV_STAR
Selected Airport:	KBUR [IFPA]
Climb Gradient:	None assigned
Speeds:	200 Ground Speed to 11000 FT
	240 Ground Speed to 18000 FT
	260 Ground Speed to 24000 FT
	340 Ground Speed above 24000 FT
Descent During a Turn:	Allowed
VNAV Mode:	Flight Plan

**DME DME Assessment Results for ROKKR3 path RDHOT\_ROKKR\_**

<b>DME/DME</b>	
RNP:	RNP 2
Flight Mode:	Manual
Line of Sight (DTED Level 0 Max):	Evaluated
Inertial Drift:	Enabled
Initial Drift:	0.558 NM
INS Drift Rate:	8.0 NM/Hour
Range Mode:	OSV
RNP Edges:	Evaluated
Min DME Range:	3.0 NM
DME Types:	DME, VOR-DME, VORTAC
DME Include Angles:	30 to 150
Critical DMEs:	Allowed
DoD Facilities:	Not included
Foreign Facilities:	Not included
High DMEs:	Included
Low DMEs:	Included
Terminal DMEs:	Included
Flight Check DMEs:	Not selected
Higher Altitudes:	Not Evaluated
Near Maximum Altitude:	Not Evaluated
Automatic ESVs:	Not enabled
Disabled DMEs:	None

<b>DME/DME (Continued)</b>										
<b>DMEs Used</b>										
#	Name	Lat/Lon	MAGVAR	Range	Type	Source	Critical	Status	Time	Distance
1	FLW	N35° 05' 35.10", W119° 51' 56.08"	16.0 E	40	L	IFPA	NO	Enabled	78.7 %	79.1 %
2	EHF	N35° 29' 04.40", W119° 05' 50.26"	14.0 E	130	H	IFPA	NO	Enabled	79.8 %	80.3 %
3	FIM	N34° 21' 24.10", W118° 52' 52.65"	15.0 E	40	L	IFPA	NO	Enabled	25.4 %	25.1 %
4	RZS	N34° 30' 34.32", W119° 46' 15.57"	14.0 E	130	H	IFPA	NO	Enabled	60.3 %	60 %
5	VTU	N34° 06' 53.72", W119° 02' 57.00"	15.0 E	40	L	IFPA	NO	Enabled	19.5 %	19.1 %
6	MOD	N37° 37' 38.55", W120° 57' 28.33"	17.0 E	130	DH	IFPA	NO	Enabled	3.2 %	3.3 %
7	GMN	N34° 48' 14.50", W118° 51' 40.90"	16.0 E	40	L	IFPA	NO	Enabled	4.6 %	4.5 %
8	AVE	N35° 38' 49.11", W119° 58' 42.98"	16.0 E	130	DH	IFPA	NO	Enabled	100 %	100 %
9	PRB	N35° 40' 20.87", W120° 37' 37.59"	16.0 E	40	L	IFPA	NO	Enabled	28.9 %	29.1 %
10	VNY	N34° 13' 26.48", W118° 29' 30.21"	15.0 E	40	L	IFPA	NO	Enabled	6.7 %	6.5 %
11	MQO	N35° 15' 08.12", W120° 45' 34.44"	16.0 E	40	L	IFPA	NO	Enabled	29.2 %	29.3 %
12	LHS	N34° 40' 58.70", W118° 34' 36.98"	15.0 E	130	H	IFPA	NO	Enabled	18.5 %	18 %
13	GVO	N34° 31' 52.75", W120° 05' 27.92"	16.0 E	130	H	IFPA	NO	Enabled	35.2 %	35.3 %
14	LAX	N33° 55' 59.34", W118° 25' 55.25"	15.0 E	130	H	IFPA	NO	Enabled	31.1 %	31.2 %
15	SNS	N36° 39' 49.81", W121° 36' 11.46"	17.0 E	130	H	IFPA	NO	Enabled	12.8 %	12.8 %

**DME DME Assessment Results for ROKKR3 path RDHOT\_ROKKR\_**

<b>Flight Check DME Selection</b>						
<b>Distance [NM]</b>	<b>Selected DMEs</b>					<b>Alternate</b>
0.0	MQO	FLW	PRB	SNS	AVE	EHF
11.7	AVE	PRB	FLW	MQO	EHF	
26.5	MQO	AVE	FLW	EHF		
26.7	FLW	EHF	AVE			
35.7	EHF	AVE				
36.3	EHF	AVE	RZS			
38.0	EHF	AVE	RZS	GVO		
41.2	EHF	AVE	RZS			
41.9	FLW	EHF	AVE	RZS		
42.1	FLW	EHF	AVE	LAX	RZS	GVO
69.8	GVO	AVE	RZS	LAX	FLW	FIM
70.5	RZS	AVE	GVO	FLW	FIM	
71.2	RZS	AVE	FLW	FIM	EHF	
71.9	RZS	AVE	FLW	EHF		
73.5	RZS	AVE	VTU	FLW	EHF	
74.4	RZS	AVE	VTU	FLW	FIM	LHS
78.2	VTU	RZS	AVE	LHS	FIM	
84.6	VTU	LHS	RZS	AVE		
84.9	VTU	LHS	RZS	AVE	VNY	

<b>Inertial Drift Segments</b>			
<b>#</b>	<b>Start Location</b>	<b>End Location</b>	<b>Length [NM]</b>

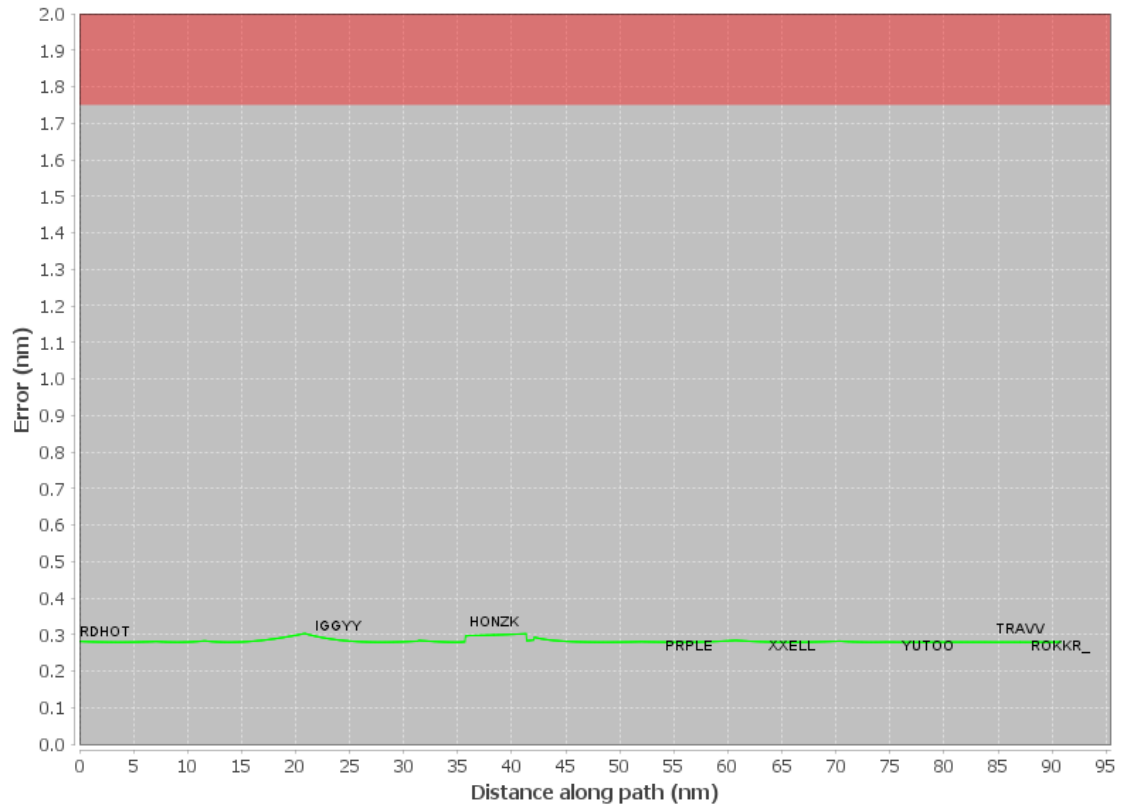
<b>Available DMEs by Waypoints</b>			
<b>Waypoint Before</b>	<b>Waypoint After</b>	<b>DME List</b>	<b>Suggested DMEs</b>
RDHOT	IGGY	FLW, AVE, PRB, EHF, MOD, SNS, MQO	
IGGY	HONZK	FLW, AVE, PRB, GVO, EHF, MQO, RZS	
HONZK	PRPLE	AVE, FLW, GVO, EHF, LAX, RZS	
PRPLE	XXELL	FLW, AVE, GVO, EHF, LAX, RZS, FIM	
XXELL	YUTOO	FLW, AVE, GVO, EHF, LAX, VTU, LHS, RZS, FIM	
YUTOO	TRAVV	AVE, VNY, VTU, LHS, GMN, RZS, FIM	
TRAVV	ROKKR_	VNY, AVE, VTU, LHS, GMN, RZS, FIM	

<b>User Data Files</b>								
<b>#</b>	<b>File Name</b>							
	None							
<b>User DMEs</b>								
<b>#</b>	<b>Name</b>	<b>Lat/Lon</b>	<b>MAGVAR</b>	<b>Range</b>	<b>Elevation [ft]</b>	<b>Frequency</b>	<b>Replaces</b>	<b>Status</b>
1	EHF FAA 704210-18 EHF [IFPA]	N35° 29' 04.40", W119° 05' 50.26"	14.0 E	130	549.2	115.4	EHF FAA 704210-18	
	ESV:	Bearing [True]: 189.0° to 258.0° Bearing [Mag]: 175.0° to 244.0°			Arc Distance: Out to 67.0 NM Altitude: 12000.0 to 16000.0 ft			



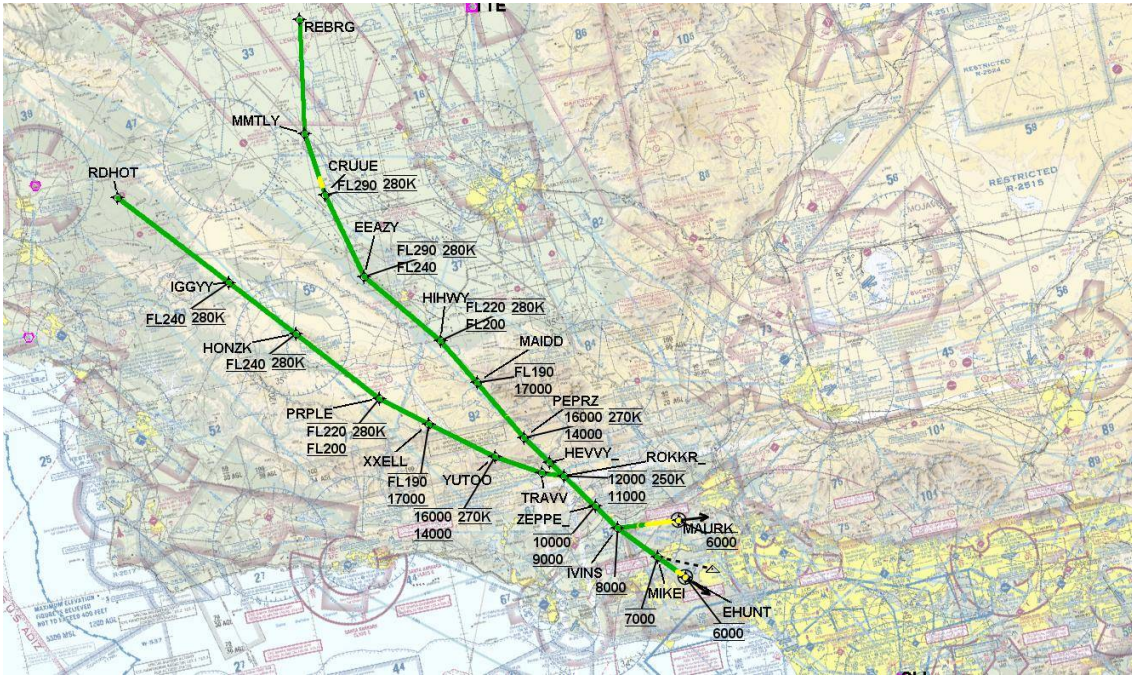
# DME DME Assessment Results for ROKKR3 path RDHOT\_ROKKR\_

## DME Error



# DME DME Assessment Results for ROKKR3 path RDHOT\_ROKKR\_

Graphic Depiction 1



## DME DME Assessment Results for ROKKR3 path REBRG\_EHUNT

### Results Summary

Flyability:	Completed
DME/DME:	Completed - No Critical DMEs
Name:	Jeanette CTR Roller
Project File:	C:\Users\Jeanette CTR Roller\Desktop\KVNY EPS Submission\KVNY STARs DME DME.tgs
Output File:	C:\Users\Jeanette CTR Roller\Desktop\KVNY EPS Submission\ROKKR3\KBUR [IFPA] ROKKR3 20230621_1601 MDT\REBRG_EHUNT\KBUR ROKKR3 RNAV STAR REBRG EHUNT 20230621_1601 MDT.pdf
Procedure Name:	ROKKR3
Software: DmeDmePlugin:	7.1.0
Date/Time:	06/21/2023 16:01 MDT
Databases:	DTED Level 0 Max

### Failures

No Failures

### Warnings

No Warnings

### Informational

No Informational

### Notes For Flight Check

None

### Flight Plan

Name	Type	Lat/Lon	Altitude (ft)	VNAV Mode	Ground Speed (kts)	Turn Type	Leg Type
REBRG	WP	N35° 58' 53.00", W119° 36' 53.00"	17000	VNAV	280	FLY_BY	TF
MMTLY	WP	N35° 39' 29.51", W119° 40' 49.65"	17000	VNAV	280	FLY_BY	TF
CRUUE	WP	N35° 28' 34.02", W119° 39' 18.55"	17000	VNAV	280	FLY_BY	TF
EEAZY	WP	N35° 13' 28.56", W119° 34' 54.76"	17000	VNAV	280	FLY_BY	TF
HIHWY	WP	N34° 59' 58.59", W119° 22' 12.26"	17000	VNAV	280	FLY_BY	TF
MAIDD	WP	N34° 51' 40.67", W119° 16' 36.53"	17000	VNAV	280	FLY_BY	TF
PEPRZ	WP	N34° 40' 47.34", W119° 09' 26.41"	14000	VNAV	270	FLY_BY	TF
HEVVY_	WP	N34° 35' 41.99", W119° 05' 16.59"	11000	VNAV	270	FLY_BY	TF
ROKKR_	WP	N34° 32' 55.36", W119° 03' 00.00"	11000	VNAV	250	FLY_BY	TF
ZEPPE_	WP	N34° 26' 45.66", W118° 57' 57.62"	9000	VNAV	250	FLY_BY	TF
IVINS	WP	N34° 22' 19.84", W118° 54' 23.15"	8000	VNAV	250	FLY_BY	TF
MIKEI	WP	N34° 16' 01.86", W118° 47' 28.90"	7000	VNAV	250	FLY_BY	TF
EHUNT	WP	N34° 11' 34.81", W118° 42' 37.13"	6000	VNAV	250	FLY_OVER	TF

## DME DME Assessment Results for ROKKR3 path REBRG\_EHUNT

Flyability	
Flight Type:	RNAV_STAR
Selected Airport:	KBUR [IFPA]
Climb Gradient:	None assigned
Speeds:	200 Ground Speed to 11000 FT
	240 Ground Speed to 18000 FT
	260 Ground Speed to 24000 FT
	340 Ground Speed above 24000 FT
Descent During a Turn:	Allowed
VNAV Mode:	Flight Plan

DME/DME	
RNP:	RNP 2
Flight Mode:	Manual
Line of Sight (DTED Level 0 Max):	Evaluated
Inertial Drift:	Enabled
Initial Drift:	0.558 NM
INS Drift Rate:	8.0 NM/Hour
Range Mode:	OSV
RNP Edges:	Evaluated
Min DME Range:	3.0 NM
DME Types:	DME, VOR-DME, VORTAC
DME Include Angles:	30 to 150
Critical DMEs:	Allowed
DoD Facilities:	Not included
Foreign Facilities:	Not included
High DMEs:	Included
Low DMEs:	Included
Terminal DMEs:	Included
Flight Check DMEs:	Not selected
Higher Altitudes:	Not Evaluated
Near Maximum Altitude:	Not Evaluated
Automatic ESVs:	Not enabled
Disabled DMEs:	None

**DME DME Assessment Results for ROKKR3 path REBRG\_EHUNT**

<b>DME/DME (Continued)</b>										
<b>DMEs Used</b>										
#	Name	Lat/Lon	MAGVAR	Range	Type	Source	Critical	Status	Time	Distance
1	FLW	N35° 05' 35.10", W119° 51' 56.08"	16.0 E	40	L	IFPA	NO	Enabled	51.2 %	52.7 %
2	EHF	N35° 29' 04.40", W119° 05' 50.26"	14.0 E	130	H	IFPA	NO	Enabled	61 %	62.9 %
3	FIM	N34° 21' 24.10", W118° 52' 52.65"	15.0 E	40	L	IFPA	NO	Enabled	34.9 %	33.6 %
4	RZS	N34° 30' 34.32", W119° 46' 15.57"	14.0 E	130	H	IFPA	NO	Enabled	28.6 %	29 %
5	VTU	N34° 06' 53.72", W119° 02' 57.00"	15.0 E	40	L	IFPA	NO	Enabled	35.8 %	33.9 %
6	SMO	N34° 00' 37.53", W118° 27' 22.97"	15.0 E	40	L	IFPA	NO	Enabled	3.2 %	2.9 %
7	MOD	N37° 37' 38.55", W120° 57' 28.33"	17.0 E	130	DH	IFPA	NO	Enabled	9.9 %	10.2 %
8	GMN	N34° 48' 14.50", W118° 51' 40.90"	16.0 E	40	L	IFPA	NO	Enabled	15.9 %	16.2 %
9	CMA	N34° 12' 45.08", W119° 05' 39.68"	15.0 E	40	L	IFPA	NO	Enabled	7.1 %	6.5 %
10	AVE	N35° 38' 49.11", W119° 58' 42.98"	16.0 E	130	DH	IFPA	NO	Enabled	76 %	77.9 %
11	VNY	N34° 13' 26.48", W118° 29' 30.21"	15.0 E	40	L	IFPA	NO	Enabled	28.5 %	26.5 %
12	LHS	N34° 40' 58.70", W118° 34' 36.98"	15.0 E	130	H	IFPA	NO	Enabled	39 %	37.6 %
13	LAX	N33° 55' 59.34", W118° 25' 55.25"	15.0 E	130	H	IFPA	NO	Enabled	43.2 %	42.7 %
14	TTE	N35° 54' 46.98", W119° 01' 14.91"	16.0 E	40	L	IFPA	NO	Enabled	18.8 %	19.4 %

<b>Flight Check DME Selection</b>						
Distance [NM]	Selected DMEs					Alternate
0.0	EHF	AVE	TTE	MOD		
12.5	EHF	AVE	TTE			
15.3	FLW	EHF	AVE	TTE		
21.6	FLW	EHF	AVE			
27.6	FLW	AVE	EHF	TTE		
29.7	FLW	AVE	EHF			
43.6	FLW	AVE	EHF	LAX		
57.0	GMN	EHF	AVE	LAX	FLW	
72.1	EHF	LHS	RZS	AVE	FIM	LAX
76.6	FIM	RZS	AVE	LAX	FLW	LHS
77.3	FIM	RZS	AVE	FLW	LHS	
78.6	RZS	AVE	FLW	LHS		
79.5	RZS	AVE	LHS			
80.4	FIM	RZS	AVE	VTU	LHS	FLW
80.5	RZS	AVE	VTU	LHS		
83.6	VTU	RZS	LHS	FIM	AVE	
94.9	VTU	RZS	GMN	VNY	FIM	LHS
95.3	VTU	RZS	FIM	LHS	VNY	
96.1	FIM	LHS	VTU	VNY		
103.3	FIM	LHS	LAX	VTU	VNY	
105.4	LAX	LHS	VTU	VNY		
111.8	VTU	LAX	VNY	LHS	FIM	
112.1	VTU	LAX	VNY	LHS	CMA	
117.0	VTU	FIM	LAX	CMA	VNY	
118.1	VTU	FIM	LAX	VNY		
118.8	VTU	FIM	LAX	SMO	VNY	

**DME DME Assessment Results for ROKKR3 path REBRG\_EHUNT**

<b>Inertial Drift Segments</b>			
#	Start Location	End Location	Length [NM]

<b>Available DMEs by Waypoints</b>			
Waypoint Before	Waypoint After	DME List	Suggested DMEs
REBRG	MMTLY	AVE, FLW, EHF, MOD, TTE	
MMTLY	CRUUE	FLW, AVE, EHF, TTE	
CRUUE	EEAZY	FLW, AVE, EHF, LAX	
EEAZY	HIHWY	FLW, AVE, LAX, EHF, GMN, RZS	
HIHWY	MAIDD	FLW, AVE, EHF, LAX, LHS, GMN, RZS, FIM	
MAIDD	PEPRZ	FLW, AVE, EHF, LAX, LHS, VTU, RZS, FIM	
PEPRZ	HEVVY_	AVE, VNY, VTU, LHS, GMN, RZS, FIM	
HEVVY_	ROKKR_	VNY, AVE, VTU, LHS, GMN, RZS, FIM	
ROKKR_	ZEPPE_	VNY, AVE, LHS, VTU, GMN, RZS, FIM	
ZEPPE_	IVINS	VNY, LAX, VTU, LHS, FIM	
IVINS	MIKEI	VNY, LAX, SMO, VTU, LHS, CMA, FIM	
MIKEI	EHUNT	VNY, LAX, SMO, VTU, CMA, LHS, FIM	

**User Data Files**

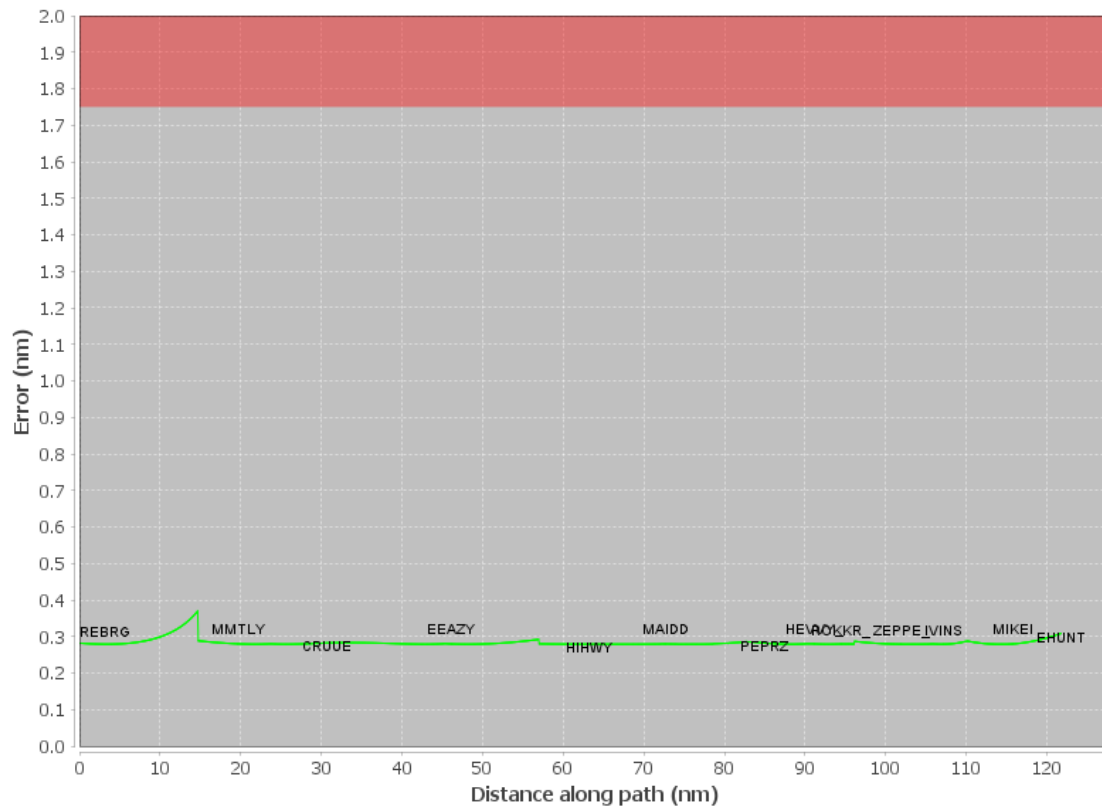
#	File Name
	None

**User DMEs**

#	Name	Lat/Lon	MAGVAR	Range	Elevation [ft]	Frequency	Replaces	Status
1	EHF FAA 704210-18 EHF [IFPA]	N35° 29' 04.40", W119° 05' 50.26"	14.0 E	130	549.2	115.4	EHF FAA 704210-18	
	ESV:	Bearing [True]: 189.0° to 258.0° Bearing [Mag]: 175.0° to 244.0°				Arc Distance: Out to 67.0 NM Altitude: 12000.0 to 16000.0 ft		

# DME DME Assessment Results for ROKKR3 path REBRG\_EHUNT

## DME Error



# DME DME Assessment Results for ROKKR3 path REBRG\_EHUNT

Graphic Depiction 1

