

Flight Procedures Cover Page	Task Action: Amendment	Task Type: SID	Estimated Chart Date: 04/17/2025	APWS Task ID: D775FCB57FD84FED91BCCE24D2BD390A	APWS Project ID: 31FE0206BE714623911EB9237833D226
Procedure: SID LIDDS FOUR (RNAV) DETROIT, MI KDTW		Enroute: YES	Specialist: Wilkinson, Christopher		Agreement Number:
Airport ID: KDTW		Airport City: DETROIT		State: MI	
Facility ID:	Facility Type:	Flight Inspection Remark Type:			
<p>Procedure Comments: ACTIVE AIRNAV DATA USED FOR KDTW AND RWYS.</p> <p>ADDED RESTRICTION TO "CROSS KZLOV AT OR BELOW 15000"</p> <p>PROCESSED IAW TECHNICAL SUPPORT GROUP (AJF-17) MEMO DATED 07/07/2021 GUIDANCE FOR PROCEDURAL CHANGES REQUIRING FLIGHT INSPECTION/VALIDATION.</p> <p>CONTACT CASIMIR TABAKA: AJV-430, (405) 954-7931.</p> <p>01/22/2025: THIS IS A CORRECTED COPY OF THE FORM APPROVED ON 10/30/2024. GRIVY TRANSITION COMPUTER CODE: CHANGED LIDDS3.GRIVY TO LIDDS4.GRIVY.</p>					

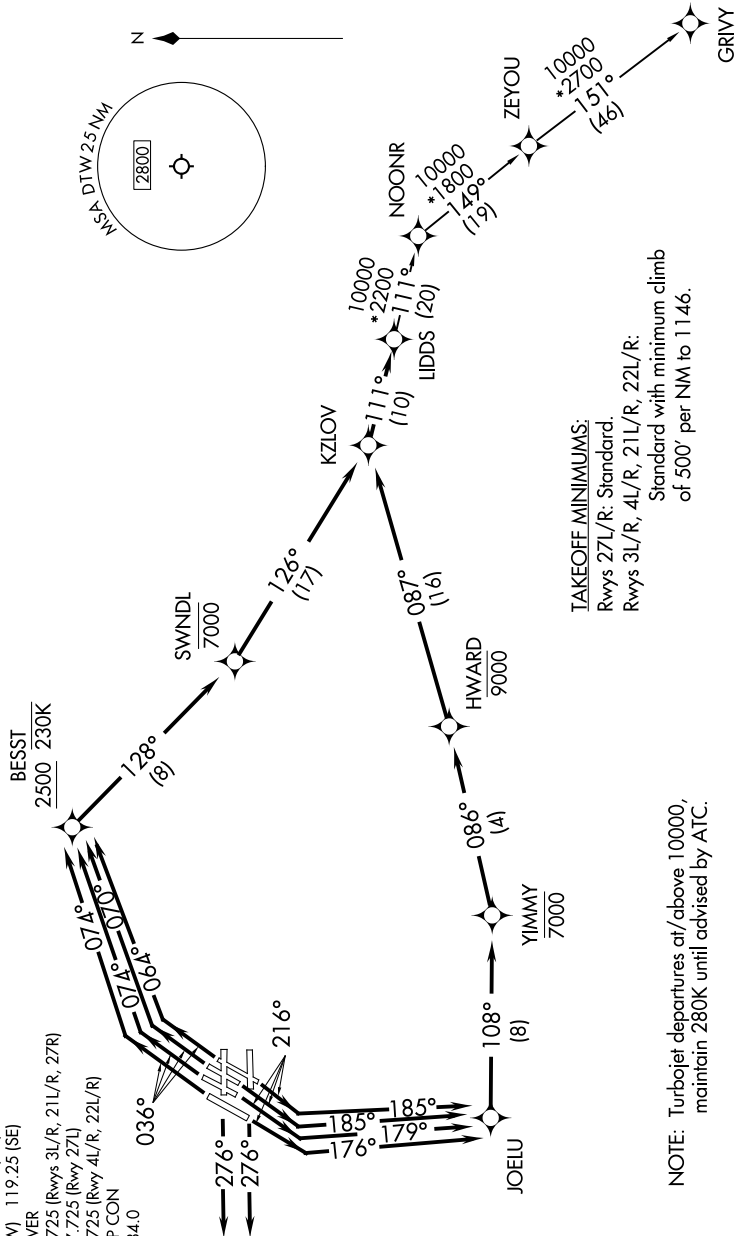


EC-1, 05 SEP 2024 to 03 OCT 2024

TOP ALTITUDE:
17000

RNAV 1 - DME/DME/IRU or GPS.
RADAR required.

D-ATIS 118.125
CLNC DEL 120.65
CPDLC
GND CON
121.8 (NW) 119.45 (NE)
132.725 (SW) 119.25 (SE)
METRO TOWER
118.4 317.725 (Rwys 3L/R, 21L/R, 27R)
128.75 317.725 (Rwy 27L)
135.0 317.725 (Rwy 4L/R, 22L/R)
DETROIT DEP CON
132.025 284.0



TAKEOFF MINIMUMS:
Rwys 27L/R: Standard
Rwys 3L/R, 4L/R, 21L/R, 22L/R:
Standard with minimum climb
of 500' per NM to 1146.

NOTE: Turbojet departures at/above 10000,
maintain 280K until advised by ATC.

NOTE: Chart not to scale.

(CONTINUED ON FOLLOWING PAGE)

EC-1, 05 SEP 2024 to 03 OCT 2024



DEPARTURE ROUTE DESCRIPTION

SEE ADDITIONAL REQUIREMENTS ON AAUP.

TAKEOFF RUNWAY 3L: Climb on heading 036° to intercept course 070° to cross BESST at or above 2500 and at or below 230K, then on track 128° to cross SWNDL at or below 7000, then on track 126° to KZLOV, thence....

TAKEOFF RUNWAY 3R: Climb on heading 036° to intercept course 064° to cross BESST at or above 2500 and at or below 230K, then on track 128° to cross SWNDL at or below 7000, then on track 126° to KZLOV, thence....

TAKEOFF RUNWAYS 4L/R: Climb on heading 036° to intercept course 074° to cross BESST at or above 2500 and at or below 230K, then on track 128° to cross SWNDL at or below 7000, then on track 126° to KZLOV, thence....

TAKEOFF RUNWAYS 21L/R: Climb on heading 216° to intercept course 185° to JOELU, then on track 108° to cross YIMMY at or below 7000, then on track 086° to cross HWARD at or below 9000, then on track 087° to KZLOV, thence....

TAKEOFF RUNWAY 22L: Climb on heading 216° to intercept course 179° to JOELU, then on track 108° to cross YIMMY at or below 7000, then on track 086° to cross HWARD at or below 9000, then on track 087° to KZLOV, thence....

TAKEOFF RUNWAY 22R: Climb on heading 216° to intercept course 176° to JOELU, then on track 108° to cross YIMMY at or below 7000, then on track 086° to cross HWARD at or below 9000, then on track 087° to KZLOV, thence....

TAKEOFF RUNWAY 27L/R: Climb on heading 276° or as assigned by ATC, for RADAR vectors to KZLOV, thence....

....on track 111° to LIDDS, then on (transition). Maintain 17000, expect filed altitude 10 minutes after departure.

GRIVY TRANSITION (LIDDS3.GRIVY):

EC-1, 05 SEP 2024 to 03 OCT 2024

EC-1, 05 SEP 2024 to 03 OCT 2024