

Flight Procedures Cover Page	Task Action: FLIGHT CHECK	Task Type: IAP	Estimated Chart Date: 06/11/2026	APWS Task ID: D7B380AFDF624E839925D03852F16528	APWS Project ID: 7D4704046569448DA98F8E05B0F8F226
Procedure: RNAV (GPS) RWY 9R AMDT 0C		Enroute: NO	Specialist: Matthews, William		Agreement Number:
Airport ID: KPTK			Airport City: PONTIAC		State: MI
Facility ID:	Facility Type:	Flight Inspection Remark Type: New FC Slot			

Procedure Comments:

ACTIVE AIRPORT AND RUNWAY DATA USED.

CRC CHANGED FROM A18A12F0 TO 37C012D4.

CONTACT KYLE THOMPSON, AJV-A330 MANAGER, (405) 954-2135.



WAAS CH 90415 W09A APP CRS 094° Rwy Idg 6521 TDZE 981 APT Elev 981

RNAV (GPS) RWY 9R

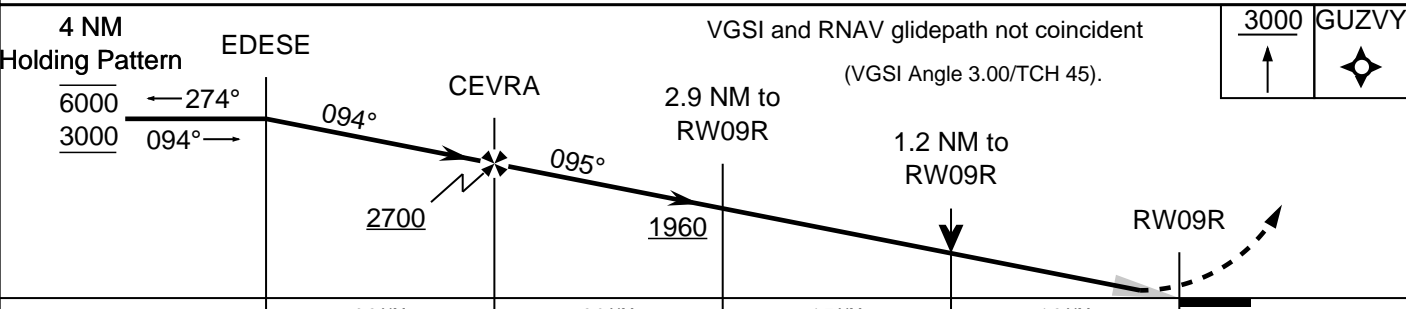
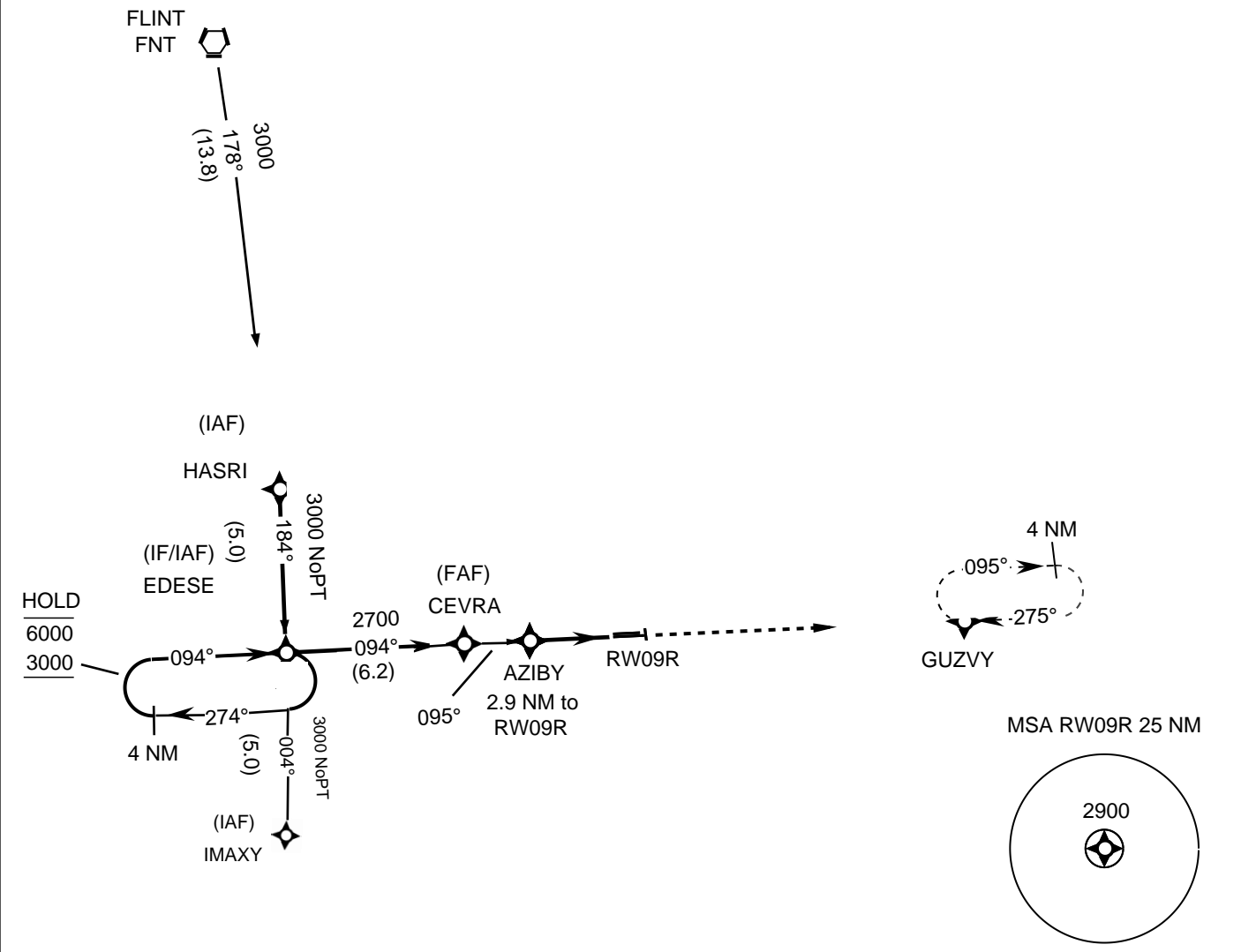
OAKLAND COUNTY INTL (KPTK)

RNP APCH - GPS MISSED APPROACH: CLIMB TO 3000 DIRECT GUVZY AND HOLD.

CIRCLING RWY 09L, 36 NA AT NIGHT. FOR UNCOMPENSATED BARO-VNAV SYSTEMS, LNAV/VNAV NA BELOW -21°C OR ABOVE 54°C. * RVR 1800 AUTHORIZED WITH USE OF FD OR AP OR HUD TO DA. FOR INOPERATIVE ALS, INCREASE LPV ALL CATS VISIBILITY TO RVR 4500.

ATIS 125.025	DETROIT APP CON 132.35 284.0	PONTIAC TOWER ★ 120.5 (CTAF) 0	GND CON 121.9	UNICOM 122.95
------------------------	--	--	-------------------------	-------------------------

PROTOTYPE-NOT FOR NAVIGATION



CATEGORY	A	B	C	D
LPV *	1181-2400 200			
LNAV/VNAV	1420-4000 439			
LNAV	1420-2400 439		1420-4000 439	
CIRCLING	1540-1 559	1560-1 579	1640-1 3/4 659	1640-2 659

WAAS CH 90415 W09A	APP CRS 095°	Rwy Ldg TDZE Apt Elev	6520 981 981
--	------------------------	-----------------------------	---

OLD

RNAV (GPS) RWY 9R

OAKLAND COUNTY INTL (PTK)

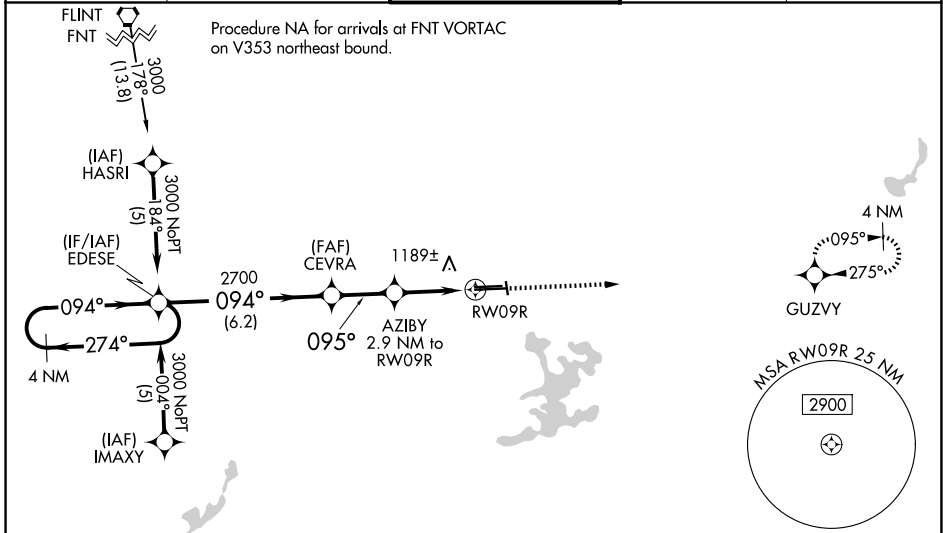
RNP APCH:

▼ For uncompensated Baro-VNAV systems, LNAV/VNAV NA below -16°C (4°F) or above 47°C (116°F). Baro-VNAV and VDP NA when using Coleman A Young altimeter setting. Circling Rwy 9L, 36 NA at night. When local altimeter setting not received, use Coleman A Young Muni altimeter setting and increase LPV DA to 1286 feet, LNAV/VNAV DA to 1685 feet and all MDA 120 feet, increase LNAV/VNAV all Cats visibility to 2 SM, increase LNAV Cat C visibility to RVR 5000, Cat D visibility to RVR 6000, and Circling Cat C/D visibility ½ SM. For inop MALSRL increase LNAV Cats A/B visibility to RVR 5000. For inop MALSRL when using Coleman A Young Muni altimeter setting; increase LPV all Cats, and LNAV Cats A/B visibility to RVR 5000. # RVR 1800 authorized with use of FD or AP or HUD to DA, NA when using Coleman A Young Muni altimeter setting.

MALSRL

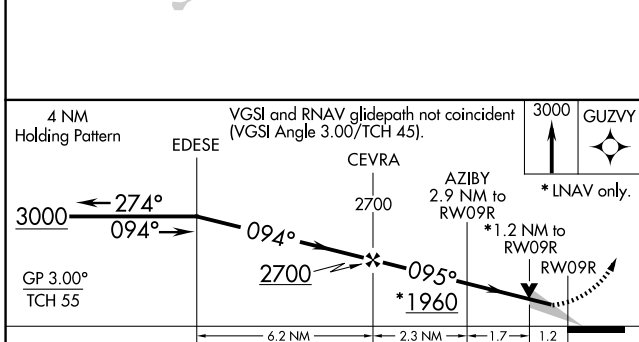
MISSED APPROACH:
Climb to 3000 direct GUVZY and hold.

ATIS 125.025	DETROIT APP CON 132.35 284.0	PONTIAC TOWER ★ 120.5 (CTAF) 0	GND CON 121.9	UNICOM 122.95
------------------------	--	--	-------------------------	-------------------------



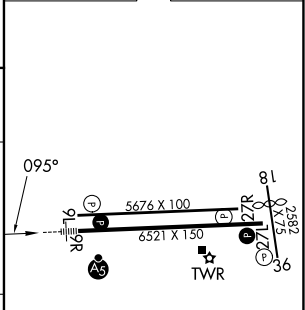
EC-1, 27 NOV 2025 to 25 DEC 2025

EC-1, 27 NOV 2025 to 25 DEC 2025



ELEV 981	D	TDZE 981
----------	----------	----------

CATEGORY	A	B	C	D
LPV DA		1181/24	200 (200-½)	
LNAV/VNAV DA		1580-1½	599 (600-1½)	
LNAV MDA	1420/40	439 (500-¾)		1420/50 439 (500-1)
CIRCLING	1500-1 519 (600-1)	1540-1 559 (600-1)	1640-1¾ 659 (700-1¾)	1640-2 659 (700-2)



HIRL Rwy 9R-27L
MIRL Rwy 9L-27R
REIL Rwy 27L
REIL Rws 9L and 27R