

Flight Procedures Cover Page	Task Action: P-NOTAM	Task Type: IAP	Estimated Chart Date: 05/14/2026	APWS Task ID: D8261BF67E2B4555A90BBE0FD59398B5	APWS Project ID: B16C046F8ABE445BA8C73E06FF997C12
Procedure: RNAV (GPS) RWY 11 AMDT 2A		Enroute: NO	Specialist: Burchell, Brandon		Agreement Number:
Airport ID: KSBP			Airport City: SAN LUIS OBISPO		State: CA
Facility ID:	Facility Type:	Flight Inspection Remark Type: New FC Slot			

**Procedure Comments:**  
P-NOTAM.

RAISE CIRCLING CAT C MDA/HAA 1500/1288 AND CAT D TO 1760/1548. REMOVE CHART CIRCLING ICON.

CANCELS T-NOTAM: 5/8780.

NFCR. FC W/ ILS OR LOC RWY 11 AT KSBP.

PROCESSED IAW TECHNICAL SUPPORT GROUP (AJF-17) MEMO DATED 07/07/2021 GUIDANCE FOR PROCEDURAL CHANGES REQUIRING FLIGHT INSPECTION/VALIDATION.

POC: KYLE THOMPSON, AJV A33, 405-954-2135.



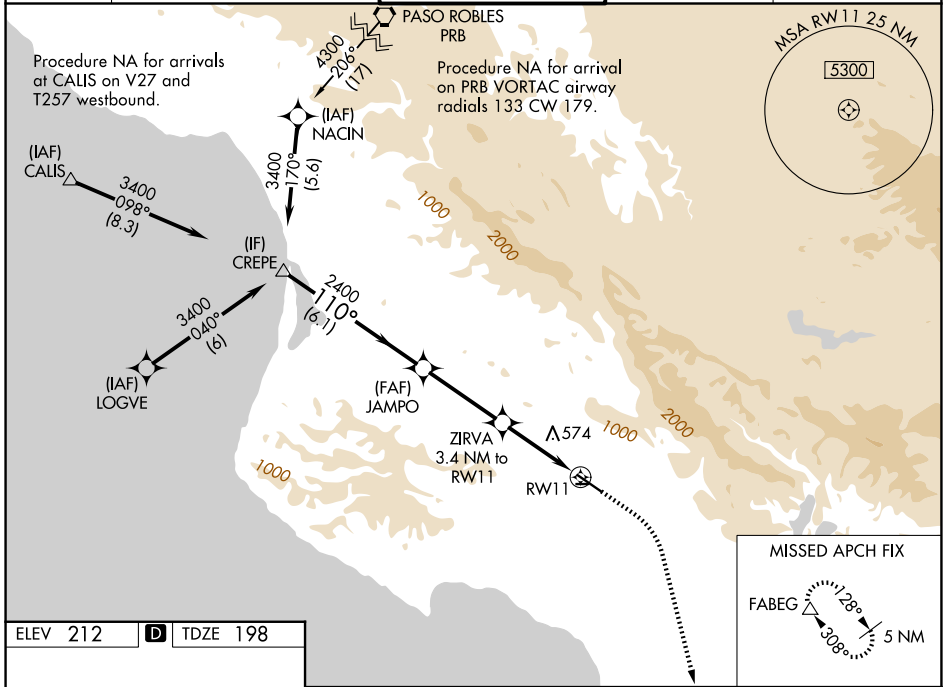
WAAS CH <b>50328</b> <b>W11A</b>	APP CRS <b>110°</b>	Rwy Ldg TDZE Apt Elev	<b>5300</b> <b>198</b> <b>212</b>
--	------------------------	-----------------------------	---

**OLD**

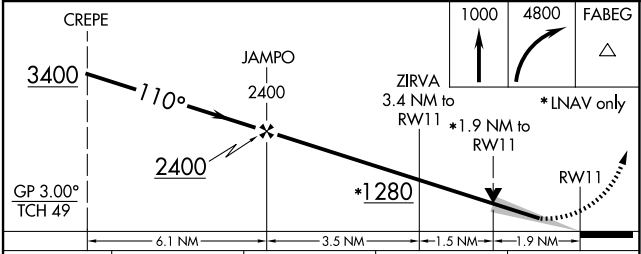
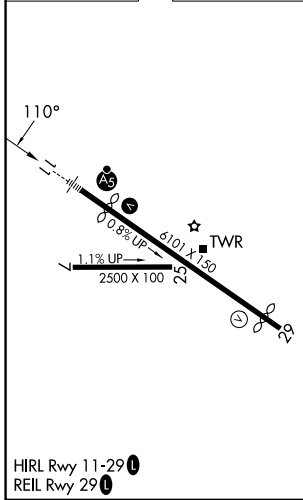
**RNAV (GPS) RWY 11**  
SAN LUIS OBISPO COUNTY RGNL (SBP)

RNP APCH.	<p>⚠ Circling NA north of Rwy 11-29. Circling Rwy 25 NA at night. For uncompensated Baro-VNAV systems, LNAV/VNAV NA below 0°C or above 54°C. For inop ALS, increase LNAV/VNAV all Cats visibility to 2 SM.</p>	<p>MALSRL</p>	<p>MISSED APPROACH: Climb to 1000 then climbing right turn to 4800 direct FABEG and hold, continue climb-in-hold to 4800.</p>
-----------	--	---------------	---

ATIS <b>120.6</b>	SANTA BARBARA APP CON* <b>127.725 244.575</b>	SAN LUIS TOWER* <b>124.0 (CTAF) 379.9</b>	GND CON <b>121.6</b>	UNICOM <b>122.95</b>
----------------------	--	--	-------------------------	-------------------------



ELEV 212	<b>D</b>	TDZE 198
----------	----------	----------



CATEGORY	A	B	C	D
LPV DA		398-½	200 (200-½)	
LNAV/VNAV DA		946-1¾	748 (800-1¾)	
LNAV MDA	840-½	642 (700-½)	840-1⅜	642 (700-1⅜)
CIRCLING	840-1 628 (700-1)	1220-1½ 1008 (1100-1½)	1460-3 1248 (1300-3)	1560-3 1348 (1400-3)

SW-3, 30 OCT 2025 to 27 NOV 2025

SW-3, 30 OCT 2025 to 27 NOV 2025