

Flight Procedures Cover Page	Task Action: Abbreviated Amendment	Task Type: IAP	Estimated Chart Date: 03/19/2026	APWS Task ID: D8C19842A44B4B20AEEBA458DAE0FEDB	APWS Project ID: 1944889A2B0C413CBC373E15814C7367
Procedure: RNAV (GPS) RWY 1 AMDT 2A		Enroute: NO	Specialist: Miller, Ralph		Agreement Number:
Airport ID: KBTV			Airport City: BURLINGTON		State: VT
Facility ID:	Facility Type:	Flight Inspection Remark Type:			

**Procedure Comments:**

Processed IAW Technical Support Group (AJF-17) Memo dated 07/07/2021, Guidance for Procedural Changes Requiring Flight Inspection/Validation.

CONTACT RAKE MCGRAW AJV-A422 (405) 954-8711

QUALITY  
9  
CHECKED  
BEGUE

QUALITY  
35  
CHECKED

WAAS CH <b>58044</b> <b>W01A</b>	APP CRS <b>006°</b>	Rwy Ldg TDZE Apt Elev	<b>3386</b> <b>334</b> <b>335</b>
--	------------------------	-----------------------------	---

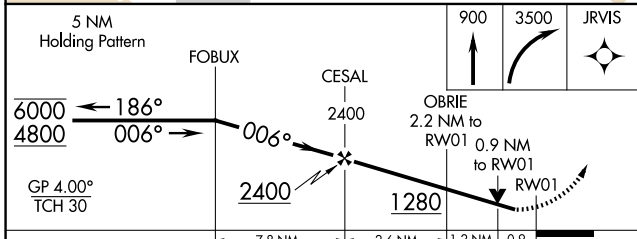
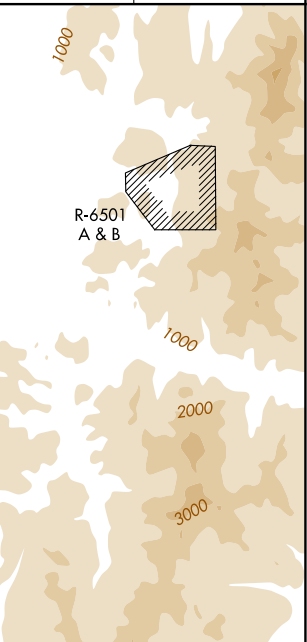
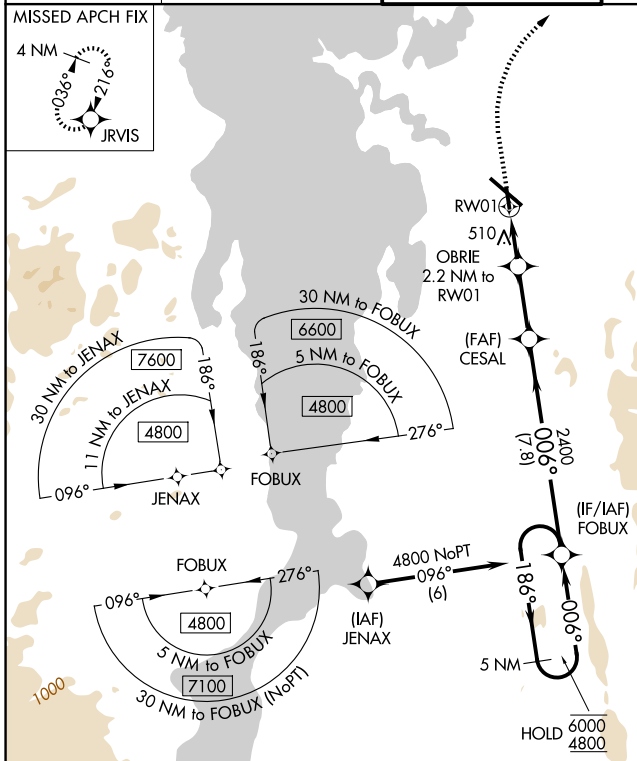
# OLD

## RNAV (GPS) RWY 1 PATRICK LEAHY BURLINGTON INTL (BTV)

RNP APCH - GPS.  
 ▽  
 -9°C Rwy 1 helicopter visibility reduction below 3/4 SM NA.

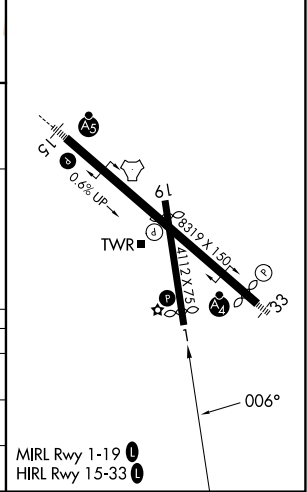
MISSED APPROACH: Climb to 900 then climbing right turn to 3500 direct JRVIS and hold, continue climb-in-hold to 3500.

ATIS <b>123.8 269.9</b>	BURLINGTON APP CON * <b>121.1 278.8</b>	BURLINGTON TOWER * <b>118.3 (CTAF) 257.8</b>	GND CON <b>126.3 348.6</b>	UNICOM <b>122.95</b>
----------------------------	--	---	-------------------------------	-------------------------



ELEV 335	<b>D</b> TDZE 334
----------	-------------------

CATEGORY	A	B	C	D
LPV DA	661-1	327 (400-1)		NA
LNAV MDA	760-1	426 (500-1)		NA
CIRCLING	840-1 505 (600-1)	860-1 525 (600-1)		NA



NE-1, 22 JAN 2026 to 19 FEB 2026

NE-1, 22 JAN 2026 to 19 FEB 2026