

Flight Procedures Cover Page	Task Action: FLIGHT CHECK	Task Type: IAP	Estimated Chart Date: 04/17/2025	APWS Task ID: D9E3067FCFA148B0938E766069E2D824	APWS Project ID: 57E07CC50DD245FD85C1AE26F0FA104B
Procedure: RNAV (GPS) RWY 26 AMDT 1		Enroute: NO	Specialist: Given, Cody		Agreement Number:
Airport ID: KOMH			Airport City: ORANGE		State: VA
Facility ID:	Facility Type:	Flight Inspection Remark Type: New FC Slot			

Procedure Comments:

FULL AMENDMENT COMPLETED UTILIZING ACTIVE AIRNAV DATA FOR KOMH RWY 26.

CSN VORTAC VOR MON.

CONTACT: ERIC SUSKI: AJV-A431, 405-954-7331.

QUALITY
9
CHECKED
BEGUE

QUALITY
34
CHECKED

APP CRS	Rwy Idg	3200
255°	TDZE	464
	Apt Elev	464

RNAV (GPS) RWY 26

ORANGE COUNTY (OMH)

RNP APCH - GPS.

▼ When local altimeter setting not received, use Charlottesville altimeter setting and increase all MDA 80 feet. Rwy 26 helicopter visibility reduction below 1 SM NA. Procedure NA at night.

MISSED APPROACH:
Climb to 3100 direct ZAVRO and hold.

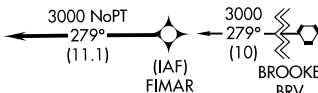
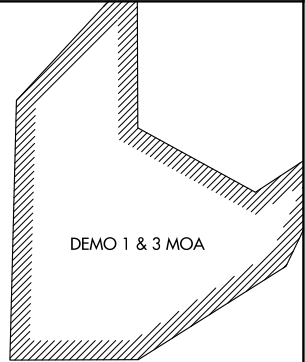
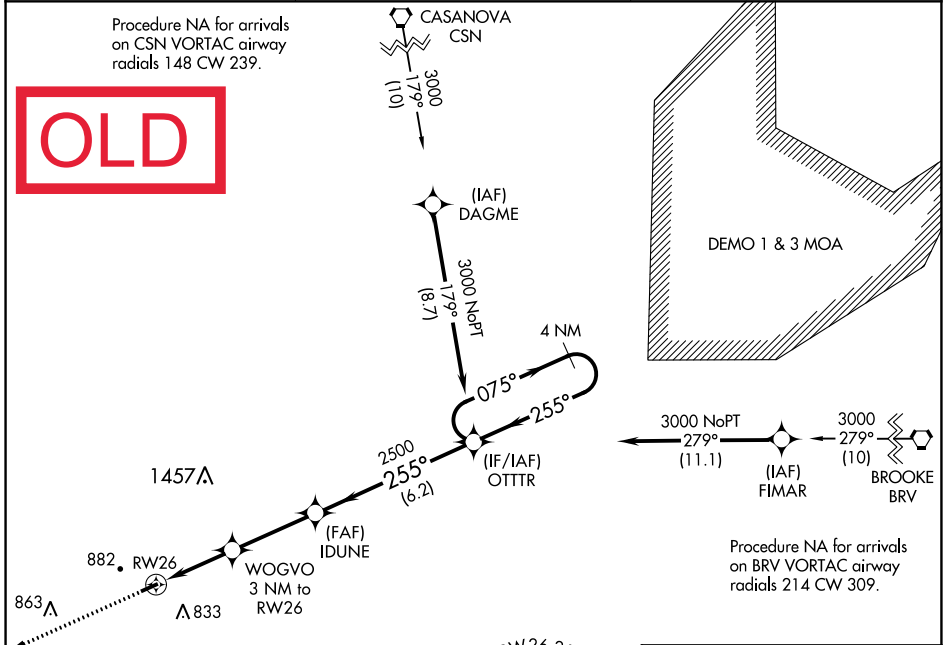
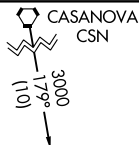
AWOS-3
118.075

POTOMAC APP CON
132.85 323.125

UNICOM
122.8 (CTAF) 0

Procedure NA for arrivals on CSN VORTAC airway radials 148 CW 239.

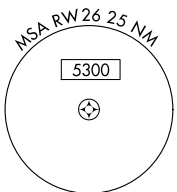
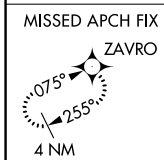
OLD



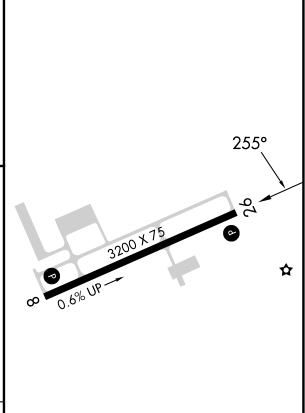
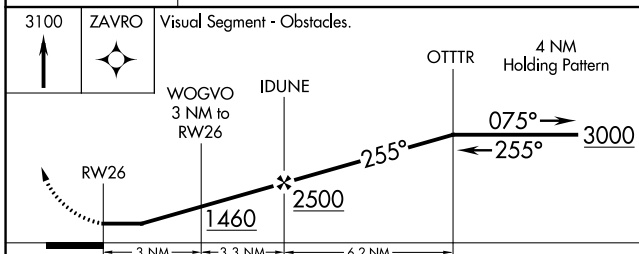
Procedure NA for arrivals on BRV VORTAC airway radials 214 CW 309.

NE-3, 05 SEP 2024 to 03 OCT 2024

NE-3, 05 SEP 2024 to 03 OCT 2024



ELEV 464	TDZE 464
----------	----------



CATEGORY	A	B	C	D
LNAV MDA	980-1	516 (600-1)		NA
C CIRCLING	1300-1¼	836 (900-1¼)		NA

MIRL Rwy 8-26 0
REIL Rwy 8 and 26 0

WAAS CH 56447 W26A	APP CRS 255°	Rwy Idg TDZE Apt Elev	3200 464 464
--	------------------------	-----------------------------	---

RNAV (GPS) RWY 26

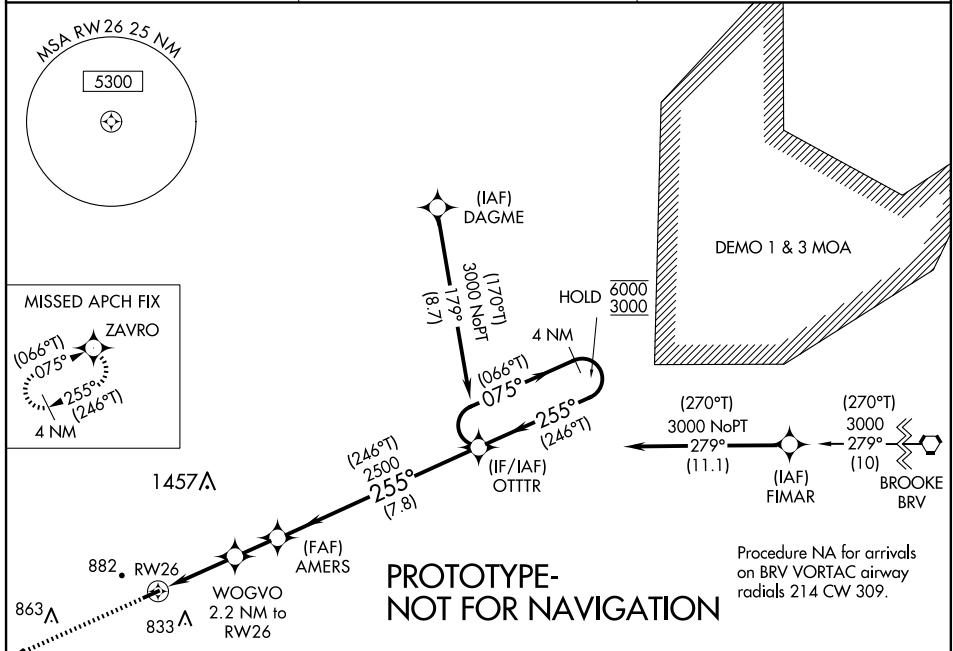
ORANGE COUNTY (OMH)

RNP APCH - GPS.

V Procedure NA at night. Rwy 26 helicopter visibility reduction below 1SM NA.
A For uncompensated Baro-VNAV systems, LNAV/VNAV NA below -15°C or above 54°C.

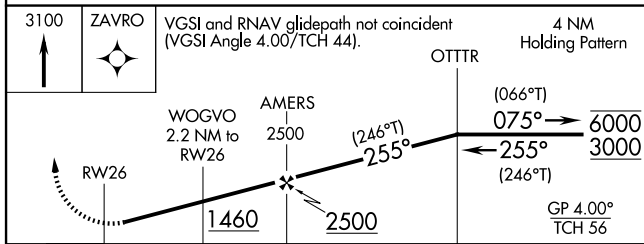
MISSED APPROACH: Climb to 3100 direct ZAVRO and hold.

AWOS-3 118.075	POTOMAC APP CON 132.85 323.125	UNICOM 122.8 (CTAF) 0
--------------------------	--	---------------------------------

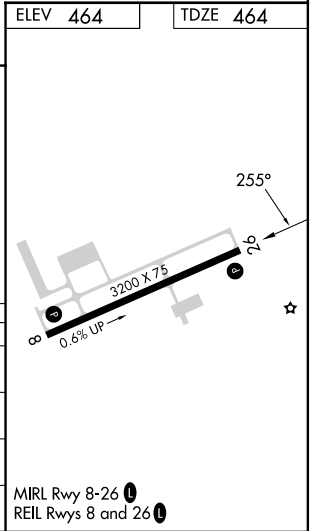


Procedure NA for arrivals on BRV VORTAC airway radials 214 CW 309.

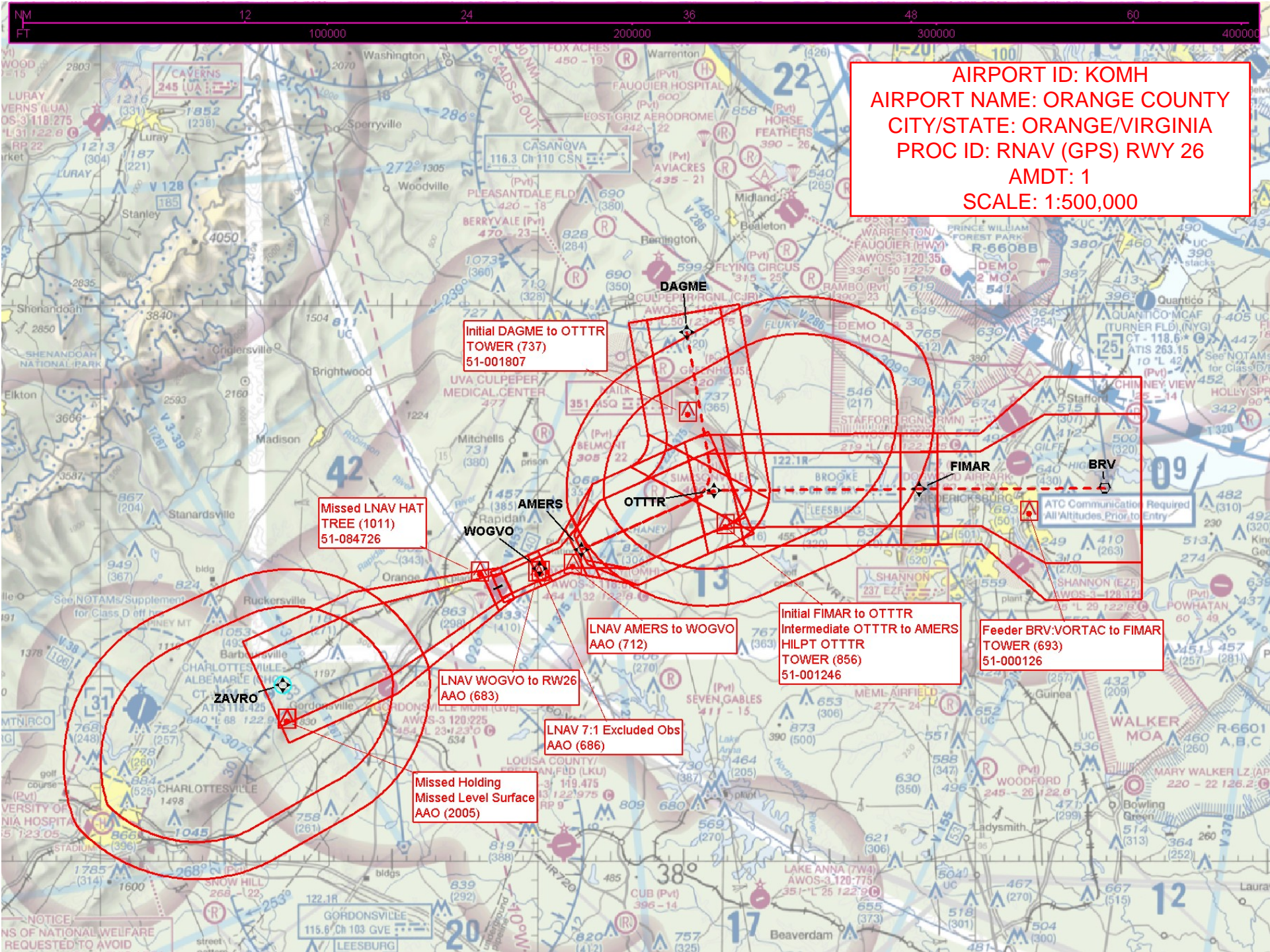
ELEV 464	TDZE 464
----------	----------



CATEGORY	A	B	C	D
LPV DA	808-1	344 (400-1)		NA
LNAV/VNAV DA	914-1 $\frac{3}{8}$	450 (500-1 $\frac{3}{8}$)		NA
LNAV MDA	1000-1	536 (600-1)		NA
C CIRCLING	1320-1 $\frac{1}{4}$	856 (900-1 $\frac{1}{4}$)		NA



MIRL Rwy 8-26 0
REIL Rwy 8 and 26 0



AIRPORT ID: KOMH
AIRPORT NAME: ORANGE COUNTY
CITY/STATE: ORANGE/VIRGINIA
PROC ID: RNAV (GPS) RWY 26
AMDT: 1
SCALE: 1:500,000

Initial DAGME to OTTTR
TOWER (737)
51-001807

Missed LNAV HAT
TREE (1011)
51-084726

Initial FIMAR to OTTTR
Intermediate OTTTR to AMERS
HILPT OTTTR
TOWER (856)
51-001246

Feeder BRV:VORTAC to FIMAR
TOWER (693)
51-000126

LNAV AMERS to WOGVO
AAO (712)

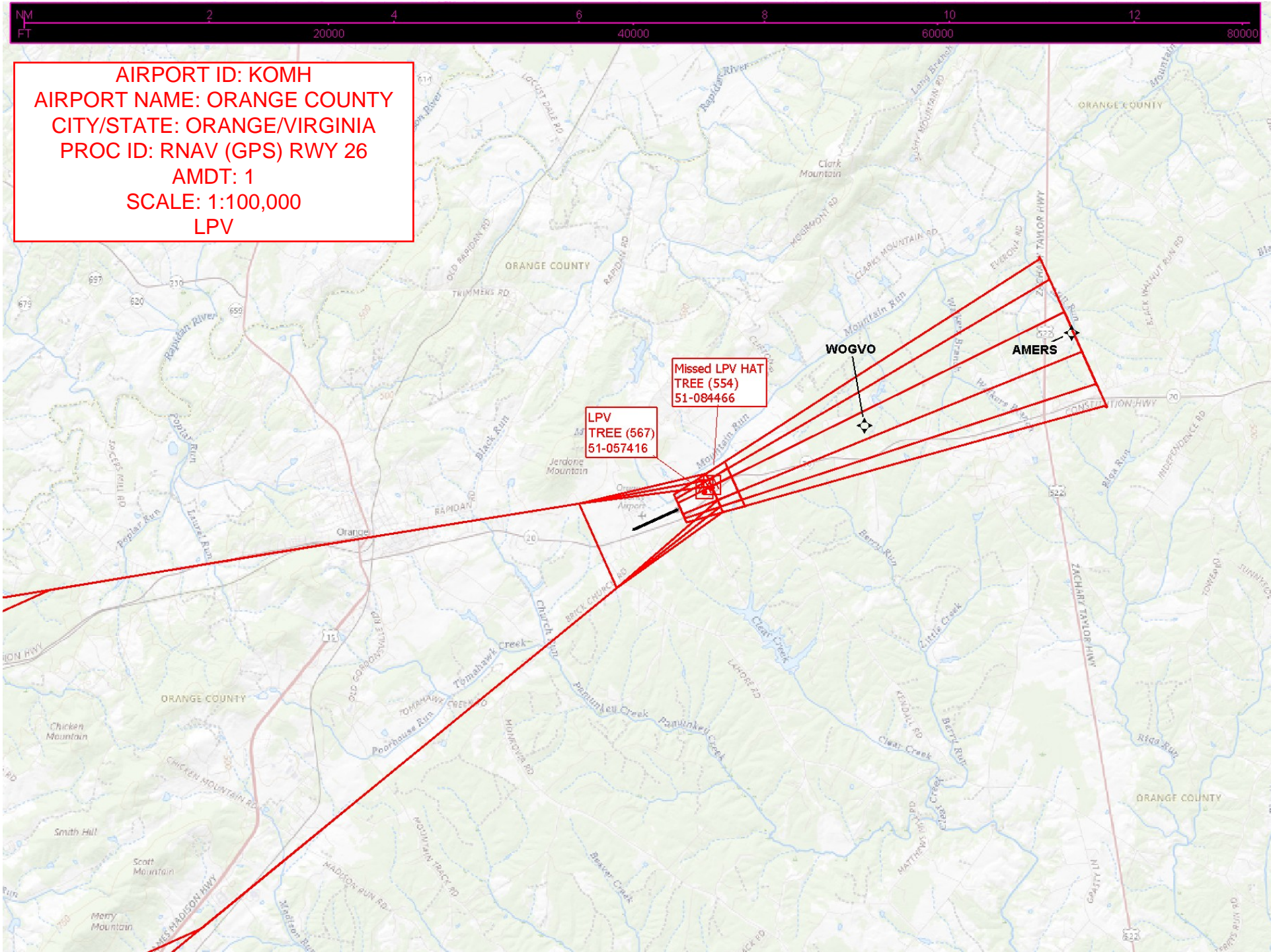
LNAV WOGVO to RW26
AAO (683)

LNAV 7:1 Excluded Obs
AAO (686)

Missed Holding
Missed Level Surface
AAO (2005)

NOTICE
OF NATIONAL WELFARE
REQUESTED TO AVOID

AIRPORT ID: KOMH
AIRPORT NAME: ORANGE COUNTY
CITY/STATE: ORANGE/VIRGINIA
PROC ID: RNAV (GPS) RWY 26
AMDT: 1
SCALE: 1:100,000
LPV

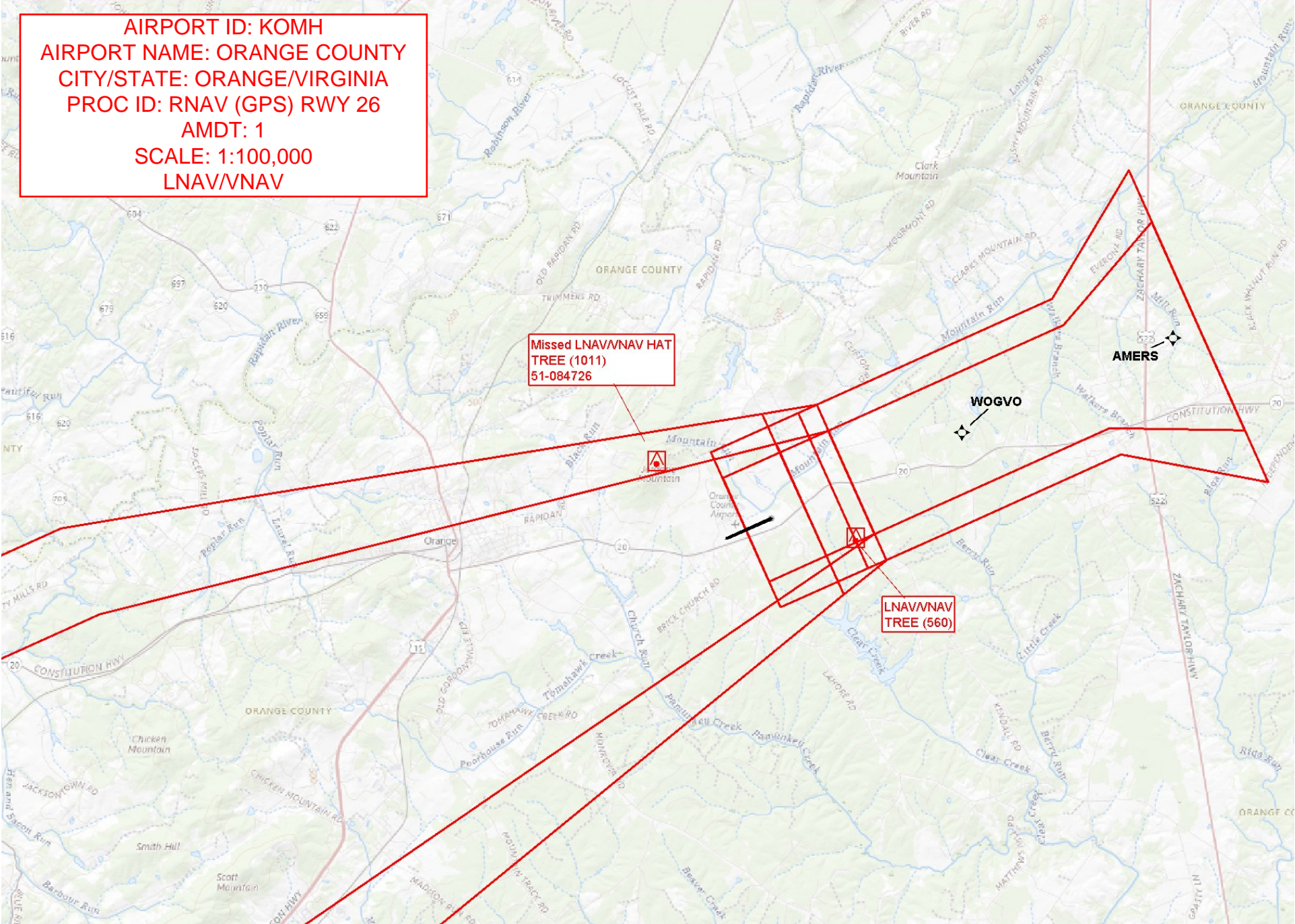




AIRPORT ID: KOMH
AIRPORT NAME: ORANGE COUNTY
CITY/STATE: ORANGE/VIRGINIA
PROC ID: RNAV (GPS) RWY 26
AMDT: 1
SCALE: 1:100,000
LNAV/VNAV

Missed LNAV/VNAV HAT
TREE (1011)
51-084726

LNAV/VNAV
TREE (560)



AIRPORT ID: KOMH
AIRPORT NAME: ORANGE COUNTY
CITY/STATE: ORANGE/VIRGINIA
PROC ID: RNAV (GPS) RWY 26
AMDT: 1
SCALE: 1:100,000
LNAV, CIRCLING

Circling CAT A/B
Missed LNAV HAT
TREE (1011)
51-084726

AMERS

WOGVO

LNAV AMERS to WOGVO
AAO (712)

LNAV 7:1 Excluded Obs
AAO (686)

LNAV WOGVO to RW26
AAO (683)

