

WAAS CH 72912 W24A	APP CRS 246°	Rwy Idg TDZE Apt Elev	3801 635 635
--	------------------------	-----------------------------	---

RNAV (GPS) RWY 24

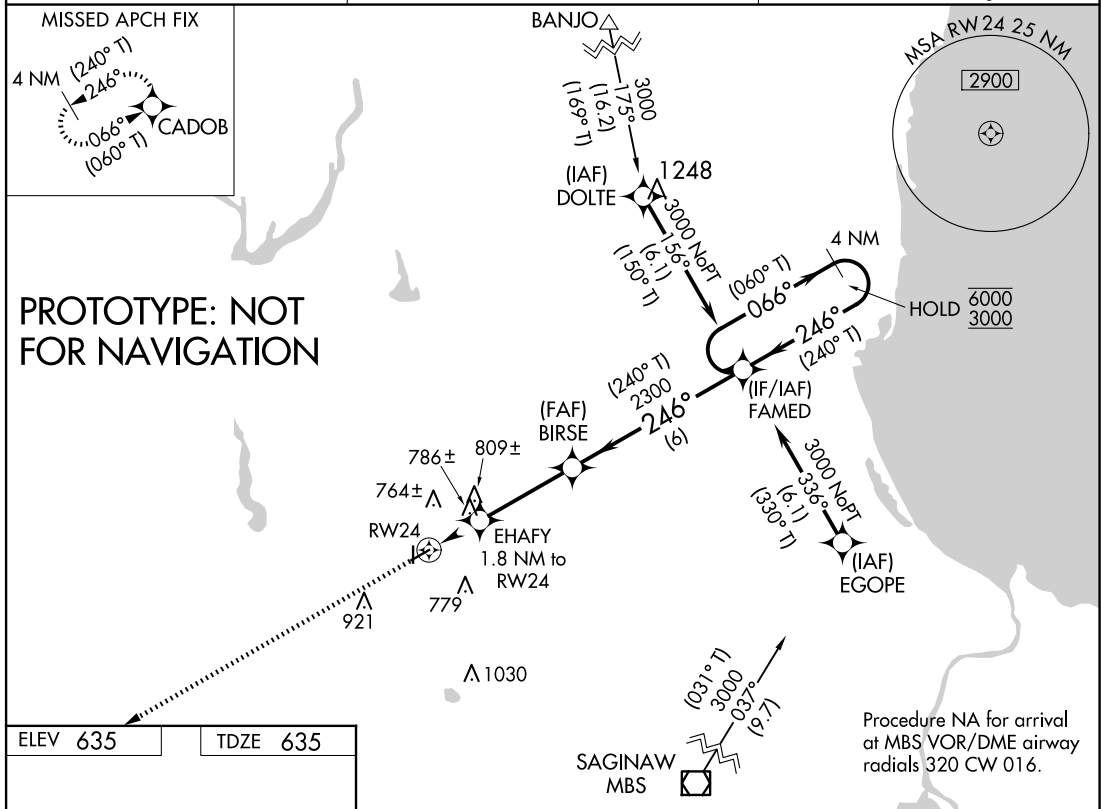
JACK BARSTOW (IKW)

RNP APCH - GPS:

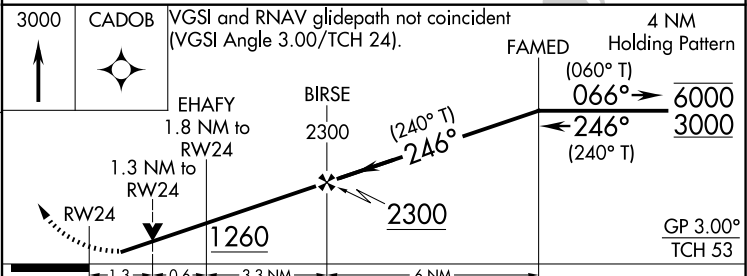
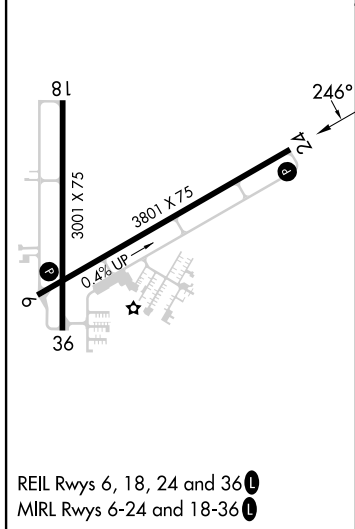
Baro-VNAV and VDP NA when using MBS altimeter setting. For uncompensated Baro-VNAV systems, LNAV/VNAV NA below -16°C or above 54°C. Circling Rwy 18, 36 NA at night. Rwy 24 helicopter visibility reduction below 3/4 SM NA. When local altimeter setting not received, use MBS altimeter setting and increase LPV DA to 945 feet; increase LNAV/VNAV DA to 1099 feet and all visibilities 1/2 SM. Increase all MDAs 40 feet and LNAV visibility Cat C SM.

MISSED APPROACH:
Climb to 3000 direct CADOB and hold.

AWOS-3 119.525	GREAT LAKES APP CON ★ 126.45 235.625	UNICOM 122.8 (CTAF)
--------------------------	--	-------------------------------



ELEV 635	TDZE 635
----------	----------



CATEGORY	A	B	C	D
LPV DA	914-7/8	279 (300-7/8)		NA
LNAV/VNAV DA	1060-1 1/4	425 (500-1 1/4)		NA
LNAV MDA	1060-1	425 (500-1)	1060-1 1/4 425 (500-1 1/4)	NA
CIRCLING	1080-1 445 (500-1)	1100-1 465 (500-1)	1240-1 3/4 605 (700-1 3/4)	NA

AUTOMATED AL-5476 RNAV (GPS) RWY 24

EC-1
10 JAN 2025
COMPILER: CG
REVIEWER:
DBL CHKR:
EFF: FIG