

Flight Procedures Cover Page	Task Action: Cancellation	Task Type: IAP	Estimated Chart Date: 05/14/2026	APWS Task ID: DD2FB0242A63475AA81CF6D682A71BBB	APWS Project ID: 00128EC1FB8940AA87050B7977E1E386
Procedure: VOR RWY 17 AMDT 1E		Enroute: NO	Specialist: Johnson, Timothy		Agreement Number:
Airport ID: KAEL			Airport City: ALBERT LEA		State: MN
Facility ID: AEL	Facility Type: VOR_DME	Flight Inspection Remark Type:			

Procedure Comments:
CANCELLATION OF THE VOR RWY 17 PROCEDURE.

CONTACT: CASEY HILL (405) 954-0624.

02/24/26: THIS IS A CORRECTED COPY OF THE FORM APPROVED ON 02/09/26.
GOTHE 8260-2:

1. CHANGED CONTROLLER TO CONTROLLER LOW IN REQUIRED CHARTING.
2. FAC 2 ADDED DH TO CLASS.

QUALITY
34
CHECKED

QUALITY
10
CHECKED

VOR/DME AEL	APP CRS	Rwy Idg	5000
109.8	173°	TDZE	1260
Chan 35		Apt Elev	1261

VOR RWY 17

ALBERT LEA MUNI (AEL)

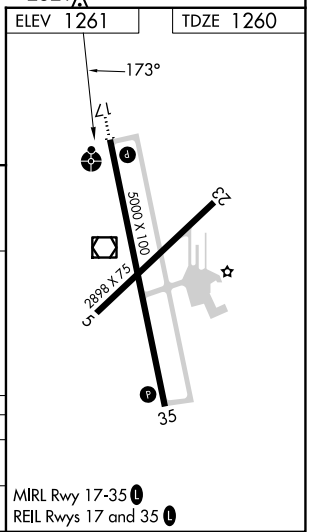
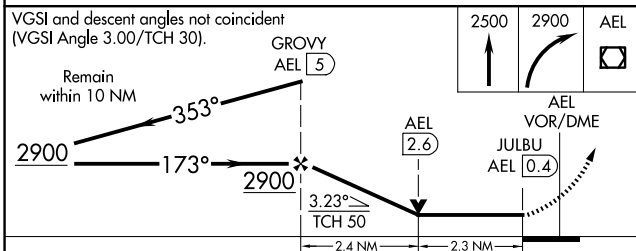
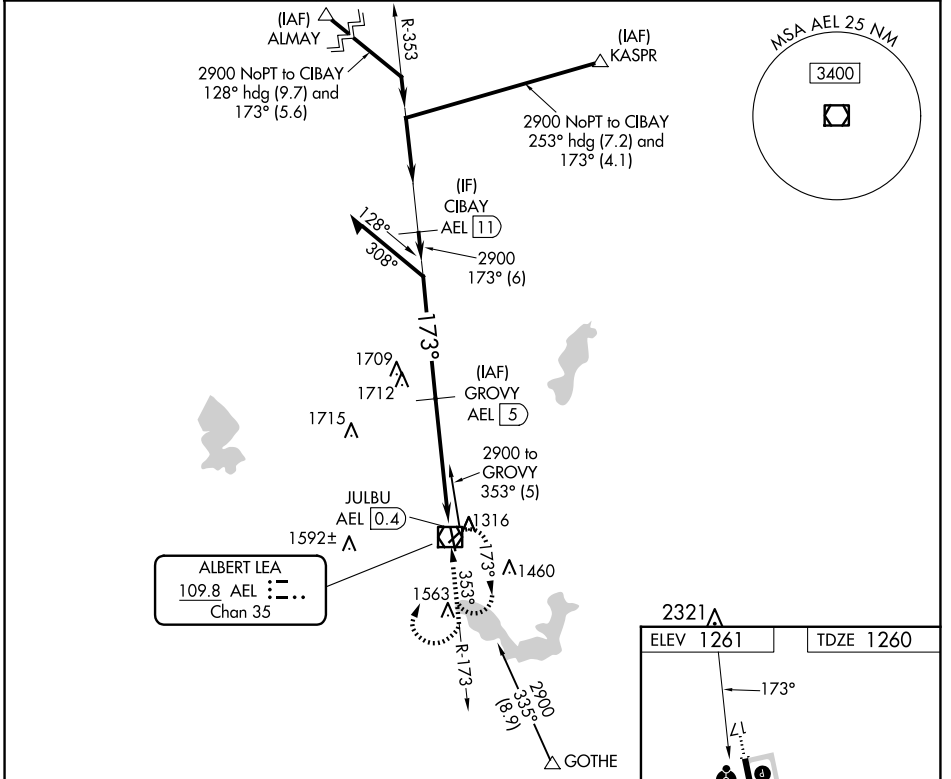
DME required.

⚠ Circling Rwy 5, 23 NA at night. Rwy 17 helicopter visibility reduction below 3/4 SM NA. When local altimeter setting not received, use Austin altimeter setting: increase all MDA 60 feet; increase S-17 Cat C/D visibility 1/2 SM and Circling Cat A/C/D visibility 1/4 SM.

ODALS

MISSED APPROACH: Climb to 2500 then climbing right turn to 2900 direct AEL VOR/DME and hold.

AWOS-3PT 119.575	ROCHESTER APP CON ★ 119.8 251.125	UNICOM 123.0 (CTAF) 0
---------------------	--------------------------------------	--------------------------



CATEGORY	A	B	C	D
S-17	2020-1	760 (800-1)	2020-2	760 (800-2)
CIRCLING	2020-1 759 (800-1)	2020-1 1/4 759 (800-1 1/4)	2020-2 1/4 759 (800-2 1/4)	2040-2 1/2 779 (800-2 1/2)

NC-1, 02 OCT 2025 to 30 OCT 2025

NC-1, 02 OCT 2025 to 30 OCT 2025