

Flight Procedures Cover Page	Task Action: P-NOTAM	Task Type: IAP	Estimated Chart Date: 09/03/2026	APWS Task ID: DD9A55B3A47B436FAF2A45F046872D11	APWS Project ID: C4AFE68B92C345369ECB8D8213FB0AD2
Procedure: RNAV (GPS) RWY 18 AMDT 1B		Enroute: NO	Specialist: Johnson, Timothy		Agreement Number:
Airport ID: KSJT			Airport City: SAN ANGELO		State: TX
Facility ID:	Facility Type:	Flight Inspection Remark Type:			

**Procedure Comments:**

Visibility Initiative (Garmin) - Update IAP visibility minimums IAW Order 8260.3, Chapter 3, Section 3-3. Visibility Minimums.

PROCESSED IAW TECHNICAL SUPPORT GROUP (AJF-17) MEMO DATED 07/07/2021, SUBJECT: GUIDANCE FOR PROCEDURAL CHANGES REQUIRING FLIGHT INSPECTION/VALIDATION.

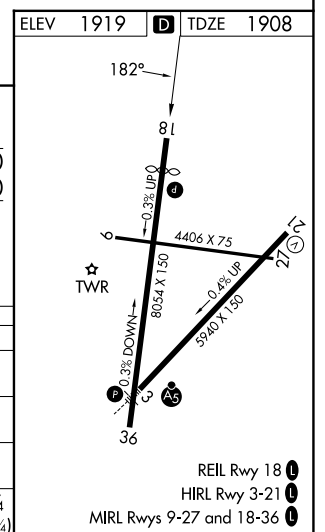
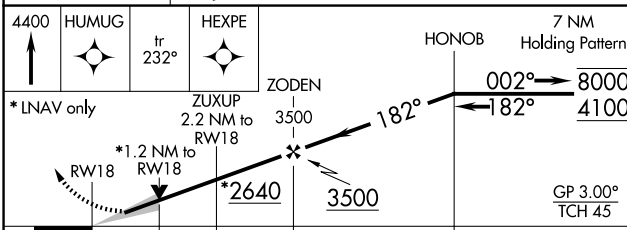
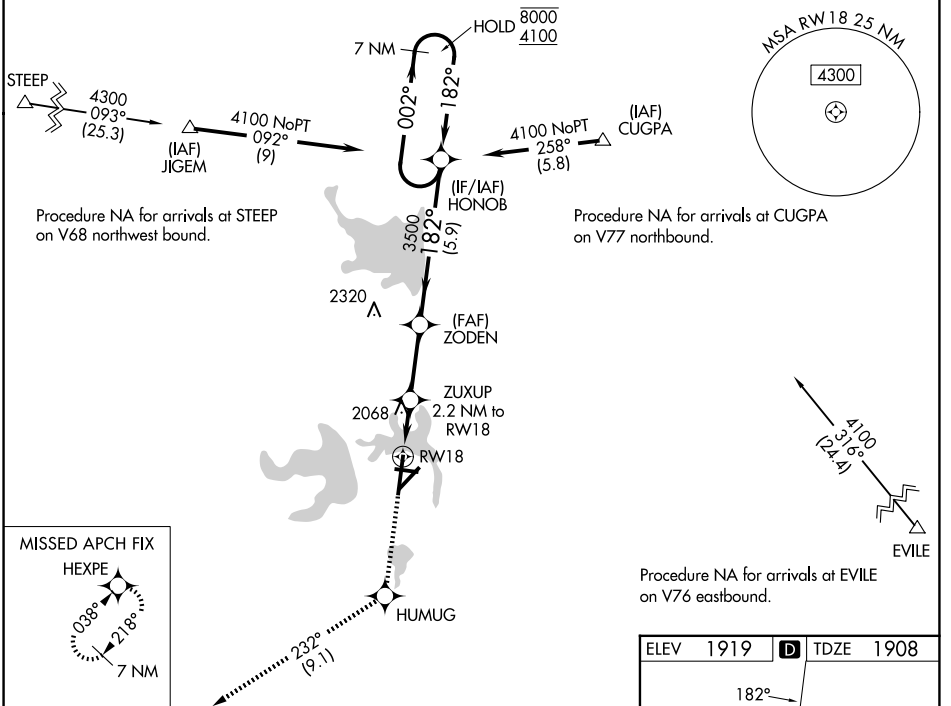
CONTACT: CASEY HILL (405) 954-0624.



WAAS CH <b>93801</b> <b>W18A</b>	APP CRS <b>182°</b>	Rwy Ldg TDZE Apt Elev	<b>7152</b> <b>1908</b> <b>1919</b>
--	------------------------	-----------------------------	---

**RNAV (GPS) RWY 18**  
SAN ANGELO RGNL/MATHIS FLD (SJT)

RNP APCH - GPS.		MATHIS TOWER ★ <b>118.3(CTAF) 0 284.7</b>		GND CON <b>121.9 348.6</b>	UNICOM <b>122.95</b>
⚠ For uncompensated Baro-VNAV systems, LNAV/VNAV NA below -8°C or above 54°C. ⚠ ASR Circling NA for Cat E west of Rwy 18-36.		MISSED APPROACH: Climb to 4400 direct HUMUG and on track 232° to HEXPE and hold.			
ATIS <b>128.45 319.0</b>	SAN ANGELO APP CON ★ <b>125.35 354.1</b>				



CATEGORY	A	B	C	D	E
LPV DA		2158-3/4	250 (300-3/4)		
LNAV/VNAV DA		2246-1	338 (400-1)		
LNAV MDA	2340-1	432 (500-1)	2340-1 1/8	432 (500-1 1/8)	
CIRCLING	2360-1 441 (500-1)	2380-1 461 (500-1)	2500-1 1/2 581 (600-1 1/2)	2700-2 1/2 781 (800-2 1/2)	2700-2 3/4 781 (800-2 3/4)

SC-3, 16 APR 2026 to 14 MAY 2026

SC-3, 16 APR 2026 to 14 MAY 2026