

Flight Procedures Cover Page	Task Action: P-NOTAM	Task Type: IAP	Estimated Chart Date: 09/03/2026	APWS Task ID: DE221B03F2A14DECA0197455A0D70E41	APWS Project ID: C532CF7C9EE34A0093CBF4207B8A439C
Procedure: RNAV (GPS) RWY 25 AMDT 1E		Enroute: NO	Specialist: Johnson, Timothy		Agreement Number:
Airport ID: KJHW			Airport City: JAMESTOWN		State: NY
Facility ID:	Facility Type:	Flight Inspection Remark Type:			

Procedure Comments:

Visibility Initiative (Garmin) - Update IAP visibility minimums IAW Order 8260.3, Chapter 3, Section 3-3. Visibility Minimums.

PROCESSED IAW TECHNICAL SUPPORT GROUP (AJF-17) MEMO DATED 07/07/2021, SUBJECT: GUIDANCE FOR PROCEDURAL CHANGES REQUIRING FLIGHT INSPECTION/VALIDATION.

CONTACT: CASEY HILL (405) 954-0624.

QUALITY
6 SN 3/26/26
CHECKED

QUALITY
41
CHECKED

OLD

WAAS CH 62910 W25A	APP CRS 249°	Rwy Ldg TDZE Apt Elev	5300 1721 1723
--	------------------------	-----------------------------	---

RNAV (GPS) RWY 25

CHAUTAUQUA COUNTY/JAMESTOWN (JHW)

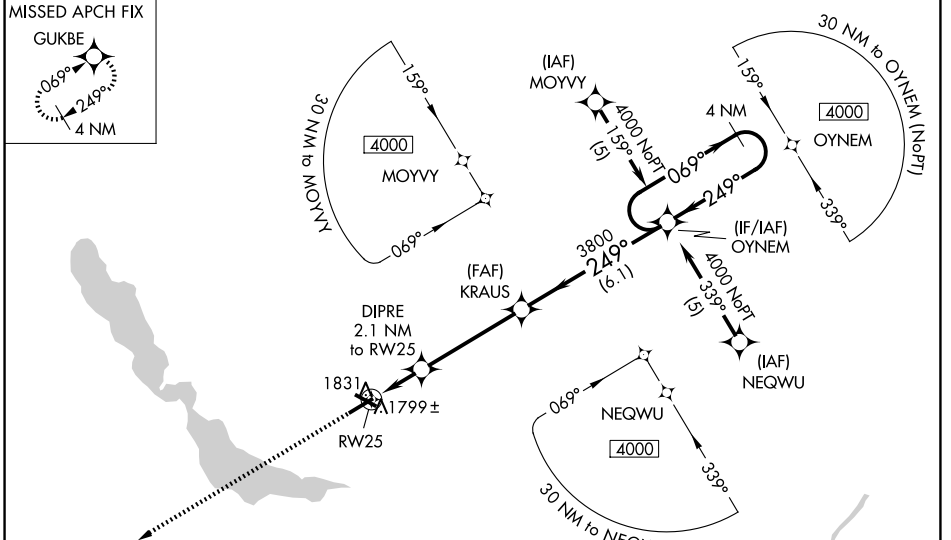
RNP APCH-GPS.

⚠ For uncompensated Baro-VNAV systems, LNAV/VNAV NA below -18°C or above 54°C. When local altimeter setting not received, use Dunkirk altimeter setting: increase LPV DA to 2113 feet and visibility all Cats ½ SM; all Cats ½ SM, LNAV/VNAV DA to 2246 feet and visibility all Cats ½ SM; increase all MDAs 200 feet and visibility LNAV Cat C ½ SM, LNAV Cat D ¼ SM, Circling Cat C ½ SM and Circling Cat D ¾ SM. For inoperative MALSR, increase LNAV Cat D visibility to 1¼ mile. For inoperative MALSR when using Dunkirk altimeter setting, increase LPV all Cats visibility to 1½ mile. Baro-VNAV and VDP NA when using Dunkirk altimeter setting. Circling to Rwy 13/31 NA at night.

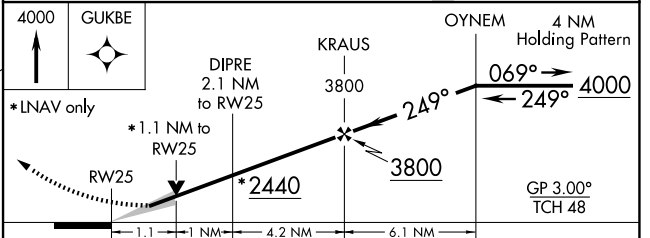
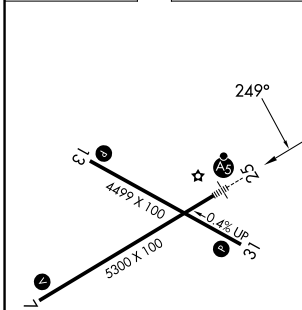
MALSR

MISSED APPROACH:
Climb to 4000 direct GUKBE and hold.

AWOS-3PT 118.425	BUFFALO APP CON * 126.05	UNICOM 122.975 (CTAF) 0
-----------------------------------	---	--



ELEV 1723	D	TDZE 1721
-----------	----------	-----------



CATEGORY	A	B	C	D
LPV DA		1921-½	200 (200-½)	
LNAV/VNAV DA		2054-¾	333 (400-¾)	
LNAV MDA		2100-½	379 (400-½)	2100-1 379 (400-1)
CIRCLING	2200-1	477 (500-1)	2260-1½ 537 (600-1½)	2340-2 617 (700-2)

- REIL Rwy 31 0
- MIRL Rwy 13-31 0
- HIRL Rwy 7-25 0

NE-2, 19 MAR 2026 to 16 APR 2026

NE-2, 19 MAR 2026 to 16 APR 2026