

Flight Procedures Cover Page	Task Action: P-NOTAM	Task Type: IAP	Estimated Chart Date: 10/29/2026	APWS Task ID: E05BDFBB5B264A6B8B1D257B5BEBCD12	APWS Project ID: 0213DAD719DC4FED8CA8E404B9A3FEC2
Procedure: RNAV (GPS) RWY 25 AMDT 2E		Enroute: NO	Specialist: Johnson, Timothy		Agreement Number:
Airport ID: KTOL			Airport City: TOLEDO		State: OH
Facility ID:	Facility Type:	Flight Inspection Remark Type:			

Procedure Comments:

Visibility Initiative (Garmin) - Update IAP visibility minimums IAW Order 8260.3, Chapter 3, Section 3-3. Visibility Minimums.

PROCESSED IAW TECHNICAL SUPPORT GROUP (AJF-17) MEMO DATED 07/07/2021, SUBJECT: GUIDANCE FOR PROCEDURAL CHANGES REQUIRING FLIGHT INSPECTION/VALIDATION.

CONTACT: CASEY HILL (405) 954-0624.

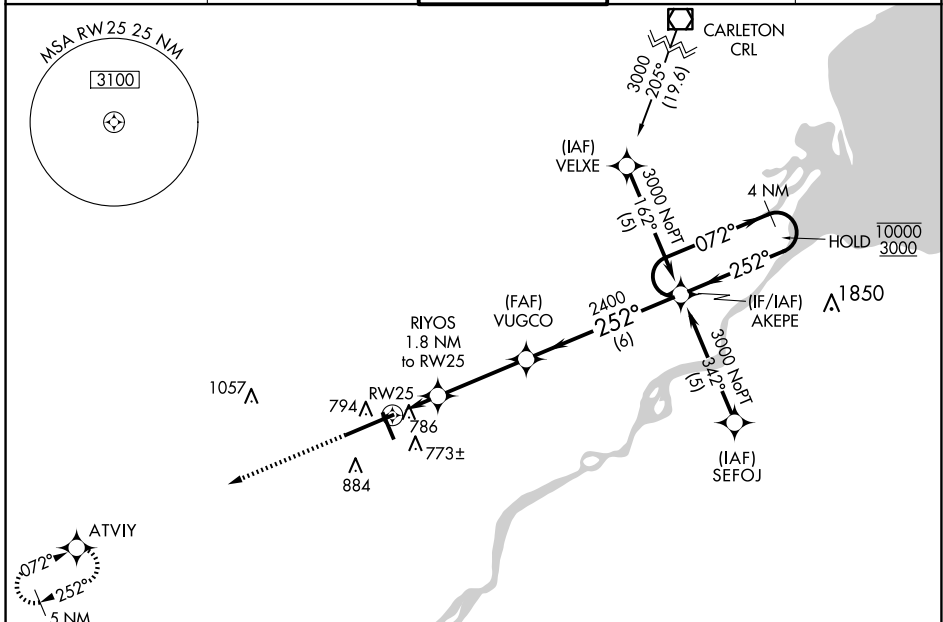


WAAS CH 48899 W25A	APP CRS 252°	Rwy Ldg TDZE Apt Elev	10599 678 683
--	------------------------	-----------------------------	--

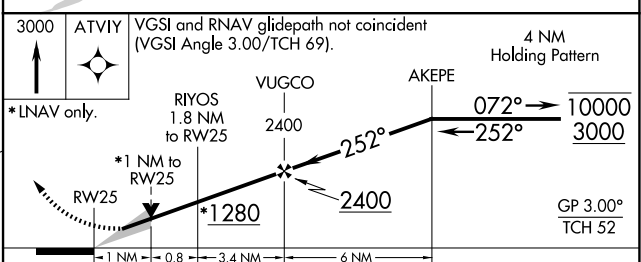
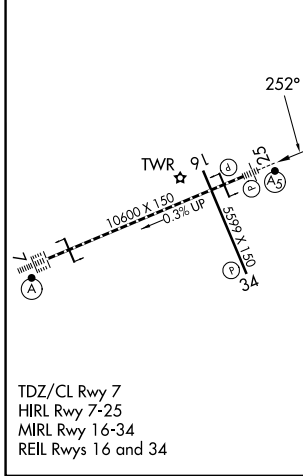
RNAV (GPS) RWY 25
EUGENE F KRANZ TOLEDO EXPRESS (TOL)

RNP APCH.	<p>For uncompensated Baro-VNAV systems, LNAV/VNAV NA below -17°C or above 52°C. For inoperative ALS, increase LPV Cat E visibility to RVR 4000, LNAV/VNAV Cat E visibility to 1½ SM, LNAV Cat D/E visibility to RVR 6000. ASR ** RVR 1800 authorized with the use of FD or AP or HUD to DA.</p>	MALSR	MISSED APPROACH: Climb to 3000 direct ATVIY and hold.
-----------	---	-------	--

ATIS 118.75 290.225	TOLEDO APP CON 134.35 317.55	TOLEDO TOWER 118.1 285.4	GND CON 121.9 348.6	CLNC DEL 121.75 348.6
-------------------------------	--	------------------------------------	-------------------------------	---------------------------------



ELEV 683	D	TDZE 678
----------	----------	----------



CATEGORY	A	B	C	D	E
LPV DA**	878/24		200 (200-½)		
LNAV/VNAV DA	1065/50		387 (400-1)		
LNAV MDA	1040/24		362 (400-½)		1040/50 362 (400-1)
C CIRCLING	1200-1	517 (600-1)	1300-1¾ 617 (700-1¾)	1360-2¼ 677 (700-2¼)	1360-2½ 677 (700-2½)