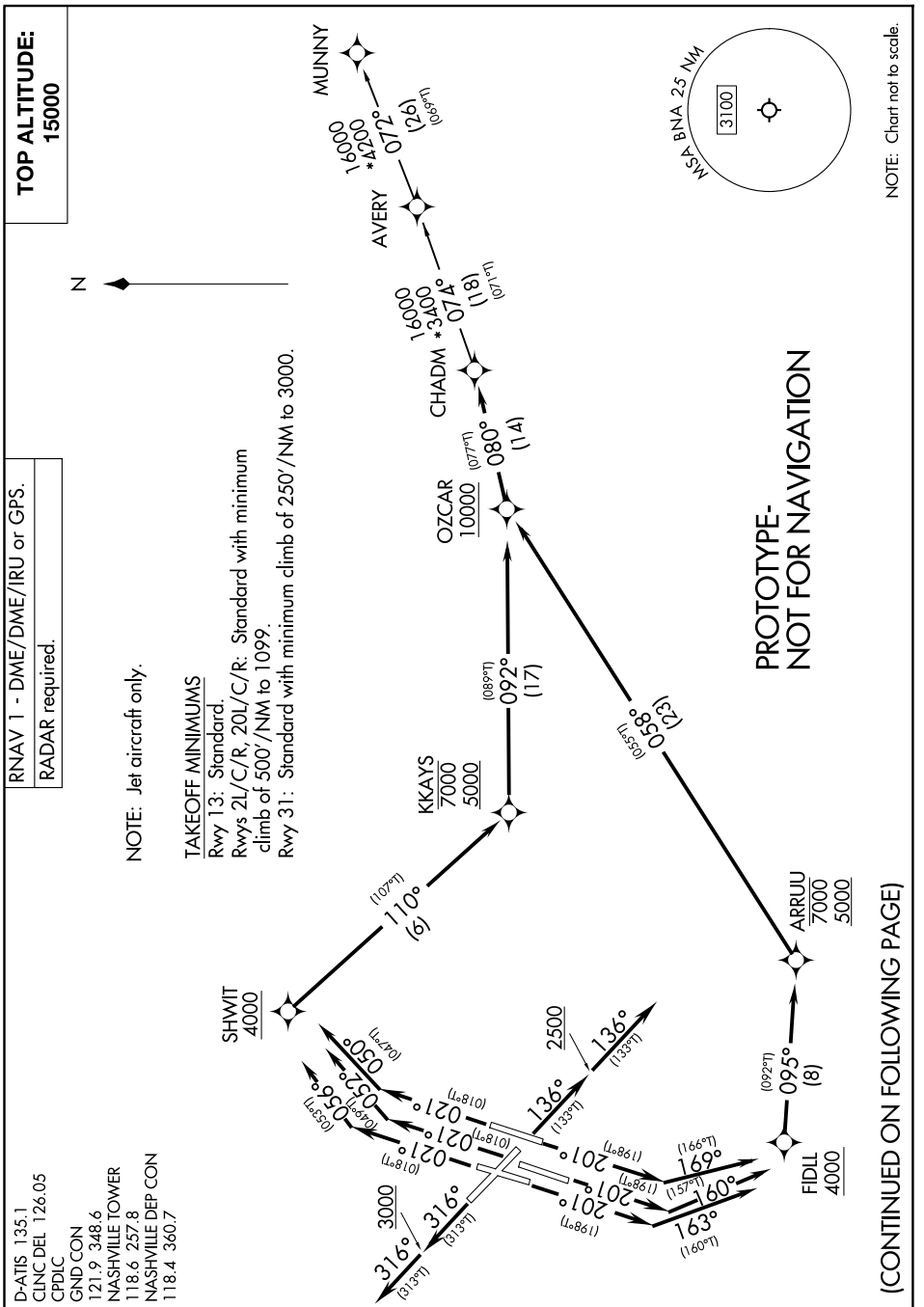


# CHADM FOUR DEPARTURE (RNAV)



NOTE: Chart not to scale.

## CHADM FOUR DEPARTURE (RNAV)



## DEPARTURE ROUTE DESCRIPTION

TAKEOFF RUNWAY 2L: Climb on heading 021° to intercept course 056° to cross SHWIT at or above 4000, then on track 110° to cross KKAYS between 5000 and 7000, then on track 092° to cross OZCAR at or above 10000, thence. . . .

TAKEOFF RUNWAY 2C: Climb on heading 021° to intercept course 052° to cross SHWIT at or above 4000, then on track 110° to cross KKAYS between 5000 and 7000, then on track 092° to cross OZCAR at or above 10000, thence. . . .

TAKEOFF RUNWAY 2R: Climb on heading 021° to intercept course 050° to cross SHWIT at or above 4000, then on track 110° to cross KKAYS between 5000 and 7000, then on track 092° to cross OZCAR at or above 10000, thence. . . .

TAKEOFF RUNWAY 13: Climb on heading 136° to 2500, then on heading 136° or as assigned by ATC for RADAR vectors to cross OZCAR at or above 10000, thence. . . .

TAKEOFF RUNWAY 20L: Climb on heading 201° to intercept course 169° to cross FIDLL at or above 4000, then on track 095° to cross ARRUU between 5000 and 7000, then on track 058° to cross OZCAR at or above 10000, thence. . . .

TAKEOFF RUNWAY 20C: Climb on heading 201° to intercept course 160° to cross FIDLL at or above 4000, then on track 095° to cross ARRUU between 5000 and 7000, then on track 058° to cross OZCAR at or above 10000, thence. . . .

TAKEOFF RUNWAY 20R: Climb on heading 201° to intercept course 163° to cross FIDLL at or above 4000, then on track 095° to cross ARRUU between 5000 and 7000, then on track 058° to cross OZCAR at or above 10000, thence. . . .

TAKEOFF RUNWAY 31: Climb on heading 316° to 3000, then on heading 316° or as assigned by ATC for RADAR vectors to cross OZCAR at or above 10000, thence. . . .

. . . .on track 080° to CHADM. Maintain 15000, expect filed altitude 10 minutes after departure.

MUNNY TRANSITION (CHADM4.MUNNY)

PROTOTYPE-NOT FOR NAVIGATION