

DME ESVs								
#	Name	Lat/Lon	MAGVAR	Range	Elevation [ft]	Frequency	Replaces	Status
1	GHM FAA 755483-13 GHM	N35° 50' 02.1911", W087° 27' 06.4824"	0.0 E	40	774.1	111.6	GHM FAA 755483-13	
	ESV:	Bearing [True]: 52.0° to 109.0° Bearing [Mag]: 52.0° to 109.0°				Arc Distance: Out to 65.0 NM Altitude: 4000.0 to 20000.0 ft		
2	HCH FAA 700766-35 HCH	N35° 46' 51.6470", W084° 58' 42.4280"	2.0 W	130	3040	117.6	HCH FAA 700766-35	
	ESV:	Bearing [True]: 288.0° to 300.0° Bearing [Mag]: 290.0° to 302.0°				Arc Distance: Out to 83.0 NM Altitude: 5000.0 to 8800.0 ft		
3	LVT FAA 210523-9 LVT	N36° 35' 04.2340", W085° 09' 59.8430"	2.0 W	40	1020	114.35	LVT FAA 210523-9	
	Restriction:	Bearing [True]: 32.0° to 54.0° Bearing [Mag]: 34.0° to 56.0°				Distance: Beyond 35.0 NM Altitude: Below 99999.0 ft		
	ESV:	Bearing [True]: 238.0° to 250.0° Bearing [Mag]: 240.0° to 252.0°				Arc Distance: Out to 61.0 NM Altitude: 4800.0 to 20000.0 ft		

DME DME Assessment Results for CHADM4 path KBNA:RW02C:DER_OZCAR

Results Summary

Flyability:	Completed
DME/DME:	Completed - No Critical DMEs
Name:	Mark CTR Thompson
Project File:	C:\Users\Mark CTR Thompson\OneDrive - Federal Aviation Administration\Desktop\RNAV Projects\RNAV Projects 2025\BNA SIDs\CHADM4 SID\DME\KBNA CHADM4 (RNAV) SID DME 03 MAR 2025.tgs
Output File:	C:\Users\Mark CTR Thompson\OneDrive - Federal Aviation Administration\Desktop\RNAV Projects\RNAV Projects 2025\BNA SIDs\CHADM4 SID\DME\KBNA [IFPA] CHADM4 20250303_0810 EST\KBNA-RW02C-DER_OZCAR\KBNA CHADM4 SID RW02C OZCAR 20250303_0810 EST.pdf
Procedure Name:	CHADM4
Software: DmeDmePlugin:	7.4.1
Date/Time:	03/03/2025 08:10 EST
Databases:	MITRE 3DEP 3 arcsec

Failures

No Failures

Warnings

No Warnings

Informational

No Informational

Notes For Flight Check

None

Flight Plan

Name	Type	Lat/Lon	Altitude (ft)	VNAV Mode	Ground Speed (kts)	Turn Type	Leg Type
KBNA:RW02C:DER	WP	N36° 07' 27.2406", W086° 40' 46.5500"	571.8	VNAV	130	FLY_BY	TF
SHWIT	WP	N36° 13' 37.6700", W086° 33' 07.0800"	4000	VNAV	200	FLY_BY	TF
KKAYS	WP	N36° 11' 49.3200", W086° 25' 48.8100"	5236	VNAV	200	FLY_BY	TF
OZCAR	WP	N36° 12' 01.3900", W086° 04' 30.2800"	10000	VNAV	200	FLY_BY	TF

Climb Gradient:
500.0 ft/NM up to 1099.0 ft MSL
200.0 ft/NM

Flyability

Flight Type:	SID
Selected Airport:	KBNA [IFPA]
Climb Gradient:	500.0 ft/NM up to 1099.0 ft MSL 200.0 ft/NM
Speeds:	130 at the Runway DER
	145 at the end of the VA or VI leg
	200 Ground Speed to 11000 FT
	240 Ground Speed to 18000 FT
	260 Ground Speed to 24000 FT
	340 Ground Speed above 24000 FT
Descent During a Turn:	Allowed
VNAV Mode:	Flight Plan

DME DME Assessment Results for CHADM4 path KBNA:RW02C:DER_OZCAR

DME/DME	
RNP:	RNP 2
Flight Mode:	Manual
Line of Sight (DTED Level 0 Max):	Evaluated
Inertial Drift:	Enabled
Initial Drift:	0.558 NM
INS Drift Rate:	8.0 NM/Hour
Range Mode:	OSV
RNP Edges:	Evaluated
Min DME Range:	3.0 NM
DME Types:	DME, VOR-DME, VORTAC, TACAN
DME Include Angles:	30 to 150
Critical DMEs:	Not Allowed
DoD Facilities:	Not included
Foreign Facilities:	Not included
High DMEs:	Included
Low DMEs:	Included
Terminal DMEs:	Included
Flight Check DMEs:	Not selected
Higher Altitudes:	Not Evaluated
Near Maximum Altitude:	Not Evaluated
Automatic ESVs:	Not enabled
Disabled DMEs:	None

DME/DME (Continued)										
DMEs Used										
#	Name	Lat/Lon	MAGVAR	Range	Type	Source	Critical	Status	Time	Distance
1	SYI	N35° 33' 43.1090", W086° 26' 20.9383"	1.0 W	40	L		NO	Enabled	0.8 %	0.9 %
2	BWG	N36° 57' 52.0000", W086° 25' 24.0000"	0.0 E	130	DH		NO	Enabled	0.8 %	0.9 %
3	BNA	N36° 08' 13.0573", W086° 41' 05.1762"	2.0 W	130	H		NO	Enabled	0.8 %	0.9 %
4	LVT	N36° 35' 04.2340", W085° 09' 59.8430"	2.0 W	40	L		NO	Enabled	23 %	23.3 %
5	HCH	N35° 46' 51.6470", W084° 58' 42.4280"	2.0 W	130	DH		NO	Enabled	39.6 %	40.1 %
6	GHM	N35° 50' 02.1911", W087° 27' 06.4824"	0.0 E	40	L		NO	Enabled	17.7 %	18 %

Flight Check DME Selection						
Distance [NM]	Selected DMEs					Alternate
0.0						
15.1	BWG	BNA	SYI	GHM	HCH	
15.4						
19.6	GHM	HCH				
24.8	LVT	HCH	GHM			
25.2	LVT	HCH				

Inertial Drift Segments			
#	Start Location	End Location	Length [NM]
1	N36° 07' 29.2491", W086° 40' 45.7461"	N36° 11' 49.3200", W086° 25' 48.8100"	14.9976
2	N36° 11' 49.5887", W086° 25' 24.1449"	N36° 11' 52.8707", W086° 20' 11.7165"	4.2149

DME DME Assessment Results for CHADM4 path KBNA:RW02C:DER_OZCAR

Available DMEs by Waypoints

Waypoint Before	Waypoint After	DME List	Suggested DMEs
KBNA:RW02C:DER	SHWIT		
SHWIT	KKAYS		
KKAYS	OZCAR	SYI, BWG, BNA, LVT, HCH, GHM	

User Data Files

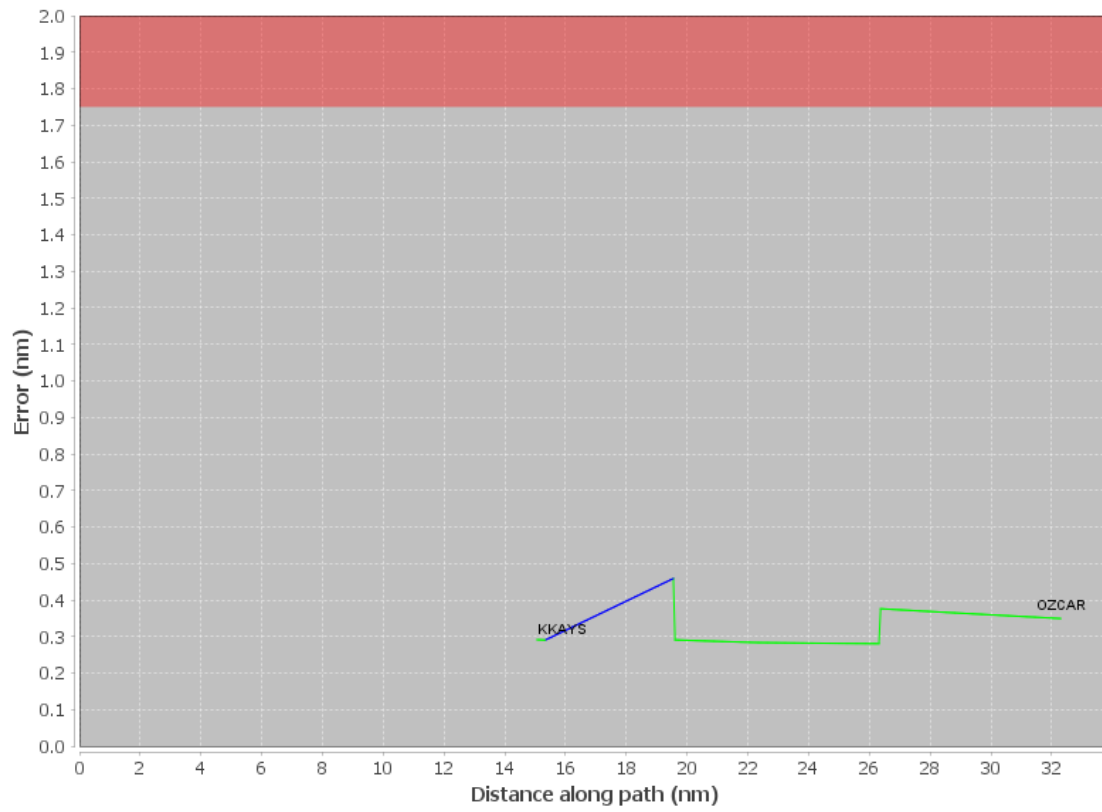
#	File Name
	None

User DMEs

#	Name	Lat/Lon	MAGVAR	Range	Elevation [ft]	Frequency	Replaces	Status
1	LVT FAA 210523-9 LVT	N36° 35' 04.2340", W085° 09' 59.8430"	2.0 W	40	1020	114.35	LVT FAA 210523-9	
	ESV:	Bearing [True]: 238.0° to 250.0° Bearing [Mag]: 240.0° to 252.0°				Arc Distance: Out to 61.0 NM Altitude: 4800.0 to 20000.0 ft		
2	GHM FAA 755483-13 GHM	N35° 50' 02.1911", W087° 27' 06.4824"	0.0 E	40	774.1	111.6	GHM FAA 755483-13	
	ESV:	Bearing [True]: 52.0° to 109.0° Bearing [Mag]: 52.0° to 109.0°				Arc Distance: Out to 65.0 NM Altitude: 4000.0 to 20000.0 ft		
3	HCH FAA 700766-35 HCH	N35° 46' 51.6470", W084° 58' 42.4280"	2.0 W	130	3040	117.6	HCH FAA 700766-35	
	ESV:	Bearing [True]: 288.0° to 300.0° Bearing [Mag]: 290.0° to 302.0°				Arc Distance: Out to 83.0 NM Altitude: 5000.0 to 8800.0 ft		

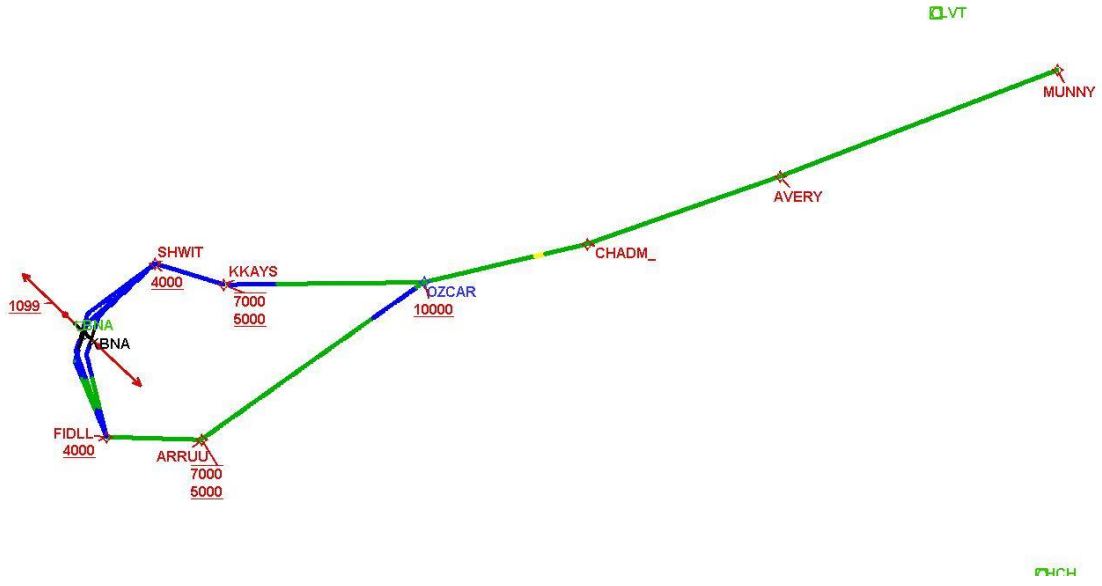
DME DME Assessment Results for CHADM4 path KBNA:RW02C:DER_OZCAR

DME Error



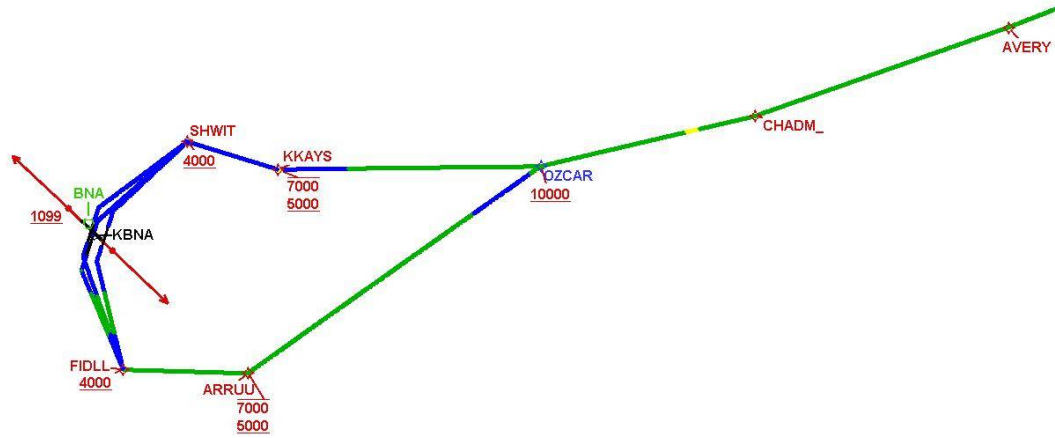
DME DME Assessment Results for CHADM4 path KBNA:RW02C:DER_OZCAR

Graphic Depiction 1



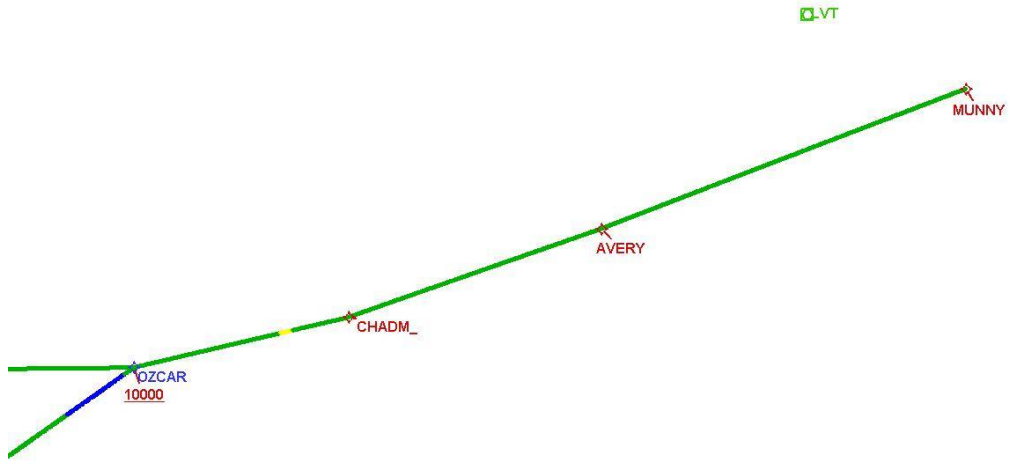
DME DME Assessment Results for CHADM4 path KBNA:RW02C:DER_OZCAR

Graphic Depiction 2



DME DME Assessment Results for CHADM4 path KBNA:RW02C:DER_OZCAR

Graphic Depiction 3



DME DME Assessment Results for CHADM4 path KBNA:RW02L:DER_SHWIT

Results Summary

Flyability:	Completed
DME/DME:	Completed - No Critical DMEs
Name:	Mark CTR Thompson
Project File:	C:\Users\Mark CTR Thompson\OneDrive - Federal Aviation Administration\Desktop\RNAV Projects\RNAV Projects 2025\BNA SIDs\CHADM4 SID\DME\KBNA CHADM4 (RNAV) SID DME 03 MAR 2025.tgs
Output File:	C:\Users\Mark CTR Thompson\OneDrive - Federal Aviation Administration\Desktop\RNAV Projects\RNAV Projects 2025\BNA SIDs\CHADM4 SID\DME\KBNA [IFPA] CHADM4 20250303_0810 EST\KBNA-RW02L-DER_SHWIT\KBNA CHADM4 SID RW02L SHWIT 20250303_0810 EST.pdf
Procedure Name:	CHADM4
Software: DmeDmePlugin:	7.4.1
Date/Time:	03/03/2025 08:10 EST
Databases:	MITRE 3DEP 3 arcsec

Failures

No Failures

Warnings

No Warnings

Informational

No Informational

Notes For Flight Check

None

Flight Plan

Name	Type	Lat/Lon	Altitude (ft)	VNAV Mode	Ground Speed (kts)	Turn Type	Leg Type
KBNA:RW02L:DER	WP	N36° 08' 16.2324", W086° 40' 42.8335"	555.6	VNAV	130	FLY_BY	TF
SHWIT	WP	N36° 13' 37.6700", W086° 33' 07.0800"	4000	VNAV	200	FLY_BY	TF

Climb Gradient:
500.0 ft/NM up to 1099.0 ft MSL
200.0 ft/NM

Flyability

Flight Type:	SID
Selected Airport:	KBNA [IFPA]
Climb Gradient:	500.0 ft/NM up to 1099.0 ft MSL 200.0 ft/NM
Speeds:	130 at the Runway DER
	145 at the end of the VA or VI leg
	200 Ground Speed to 11000 FT
	240 Ground Speed to 18000 FT
	260 Ground Speed to 24000 FT
	340 Ground Speed above 24000 FT
Descent During a Turn:	Allowed
VNAV Mode:	Flight Plan

DME DME Assessment Results for CHADM4 path KBNA:RW02L:DER_SHWIT

DME/DME	
RNP:	RNP 2
Flight Mode:	Manual
Line of Sight (DTED Level 0 Max):	Evaluated
Inertial Drift:	Enabled
Initial Drift:	0.558 NM
INS Drift Rate:	8.0 NM/Hour
Range Mode:	OSV
RNP Edges:	Evaluated
Min DME Range:	3.0 NM
DME Types:	DME, VOR-DME, VORTAC, TACAN
DME Include Angles:	30 to 150
Critical DMEs:	Not Allowed
DoD Facilities:	Not included
Foreign Facilities:	Not included
High DMEs:	Included
Low DMEs:	Included
Terminal DMEs:	Included
Flight Check DMEs:	Not selected
Higher Altitudes:	Not Evaluated
Near Maximum Altitude:	Not Evaluated
Automatic ESVs:	Not enabled
Disabled DMEs:	None

DME/DME (Continued)										
DMEs Used										
#	Name	Lat/Lon	MAGVAR	Range	Type	Source	Critical	Status	Time	Distance

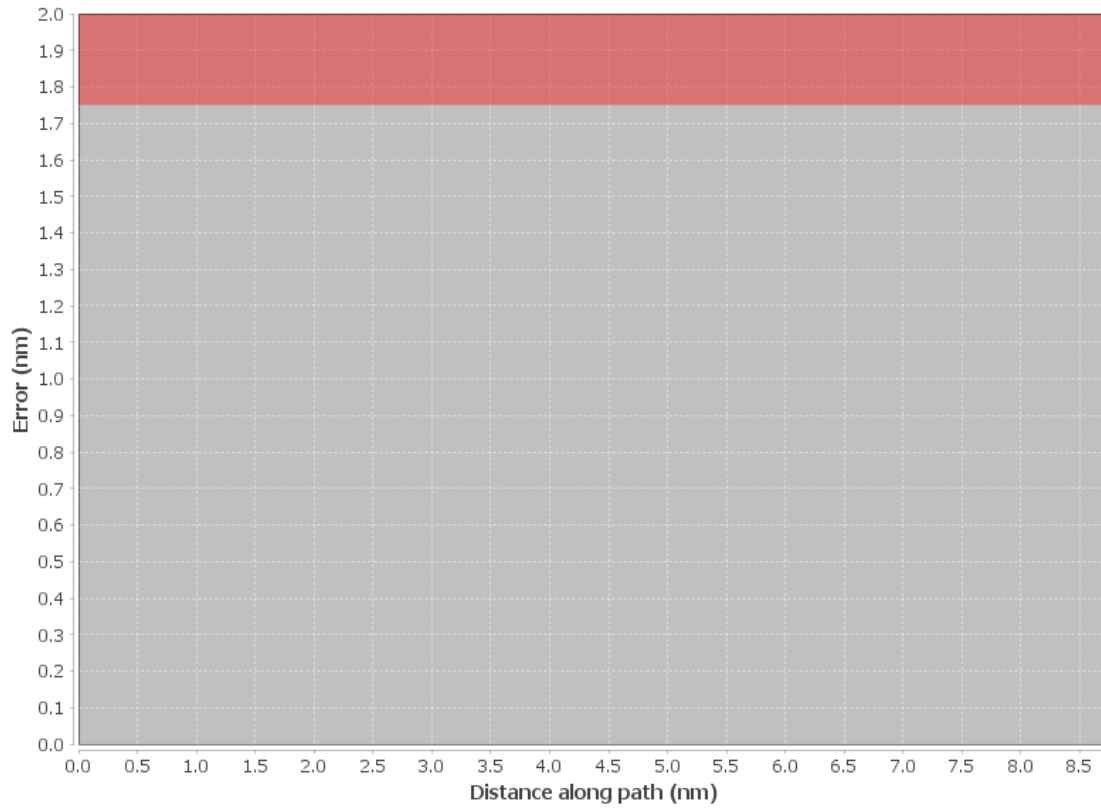
Flight Check DME Selection						
Distance [NM]	Selected DMEs					Alternate
0.0						

Inertial Drift Segments			
#	Start Location	End Location	Length [NM]
1	N36° 08' 18.2396", W086° 40' 42.0460"	N36° 13' 37.6700", W086° 33' 07.0800"	8.2967

Available DMEs by Waypoints			
Waypoint Before	Waypoint After	DME List	Suggested DMEs
KBNA:RW02L:DER	SHWIT		

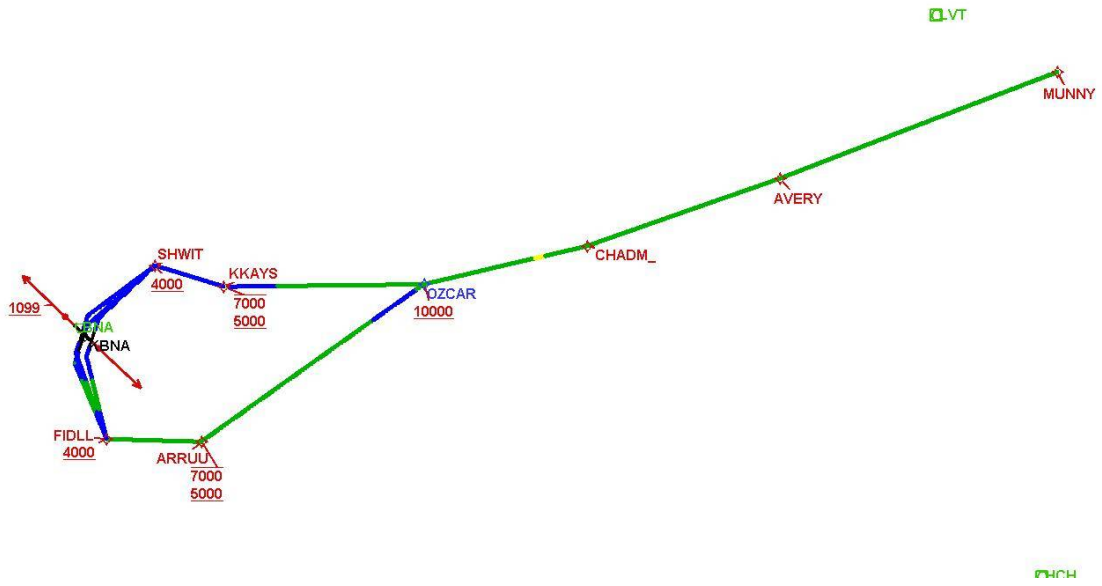
User Data Files								
#	File Name							
None								
User DMEs								
#	Name	Lat/Lon	MAGVAR	Range	Elevation [ft]	Frequency	Replaces	Status
1	LVT FAA 210523-9 LVT	N36° 35' 04.2340", W085° 09' 59.8430"	2.0 W	40	1020	114.35	LVT FAA 210523-9	
ESV:		Bearing [True]: 238.0° to 250.0° Bearing [Mag]: 240.0° to 252.0°				Arc Distance: Out to 61.0 NM Altitude: 4800.0 to 20000.0 ft		
2	GHM FAA 755483-13 GHM	N35° 50' 02.1911", W087° 27' 06.4824"	0.0 E	40	774.1	111.6	GHM FAA 755483-13	
ESV:		Bearing [True]: 52.0° to 109.0° Bearing [Mag]: 52.0° to 109.0°				Arc Distance: Out to 65.0 NM Altitude: 4000.0 to 20000.0 ft		
3	HCH FAA 700766-35 HCH	N35° 46' 51.6470", W084° 58' 42.4280"	2.0 W	130	3040	117.6	HCH FAA 700766-35	
ESV:		Bearing [True]: 288.0° to 300.0° Bearing [Mag]: 290.0° to 302.0°				Arc Distance: Out to 83.0 NM Altitude: 5000.0 to 8800.0 ft		

DME Error



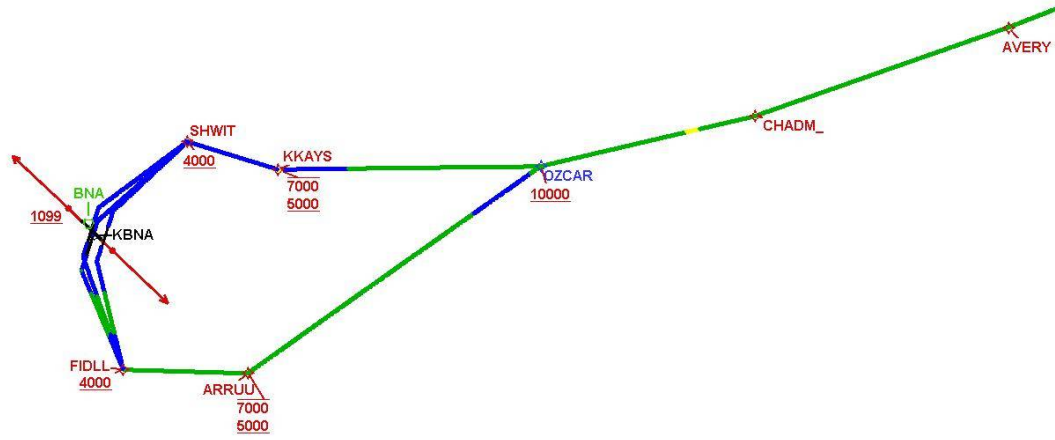
DME DME Assessment Results for CHADM4 path KBNA:RW02L:DER_SHWIT

Graphic Depiction 1



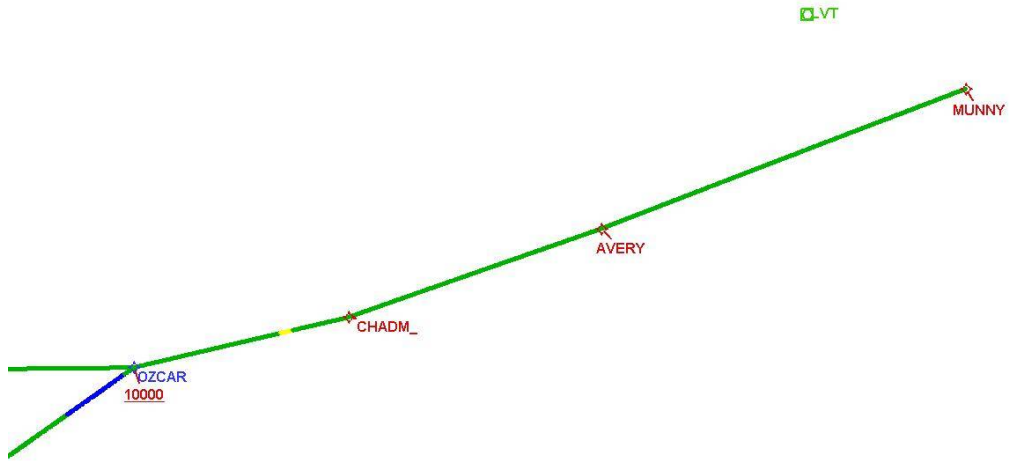
DME DME Assessment Results for CHADM4 path KBNA:RW02L:DER_SHWIT

Graphic Depiction 2



DME DME Assessment Results for CHADM4 path KBNA:RW02L:DER_SHWIT

Graphic Depiction 3



DME DME Assessment Results for CHADM4 path KBNA:RW02R:DER_SHWIT

Results Summary	
Flyability:	Completed
DME/DME:	Completed - No Critical DMEs
Name:	Mark CTR Thompson
Project File:	C:\Users\Mark CTR Thompson\OneDrive - Federal Aviation Administration\Desktop\RNAV Projects\RNAV Projects 2025\BNA SIDs\CHADM4 SID\DME\KBNA CHADM4 (RNAV) SID DME 03 MAR 2025.tgs
Output File:	C:\Users\Mark CTR Thompson\OneDrive - Federal Aviation Administration\Desktop\RNAV Projects\RNAV Projects 2025\BNA SIDs\CHADM4 SID\DME\KBNA [IFPA] CHADM4 20250303_0810 EST\KBNA-RW02R-DER_SHWIT\KBNA CHADM4 SID RW02R SHWIT 20250303_0810 EST.pdf
Procedure Name:	CHADM4
Software: DmeDmePlugin:	7.4.1
Date/Time:	03/03/2025 08:10 EST
Databases:	MITRE 3DEP 3 arcsec

Failures
No Failures

Warnings
No Warnings

Informational
No Informational

Notes For Flight Check
None

Flight Plan							
Name	Type	Lat/Lon	Altitude (ft)	VNAV Mode	Ground Speed (kts)	Turn Type	Leg Type
KBNA:RW02R:DER	WP	N36° 08' 01.0116", W086° 39' 33.3955"	540	VNAV	130	FLY_BY	TF
SHWIT	WP	N36° 13' 37.6700", W086° 33' 07.0800"	4000	VNAV	200	FLY_BY	TF
Climb Gradient: 500.0 ft/NM up to 1099.0 ft MSL 200.0 ft/NM							

Flyability	
Flight Type:	SID
Selected Airport:	KBNA [IFPA]
Climb Gradient:	500.0 ft/NM up to 1099.0 ft MSL 200.0 ft/NM
Speeds:	130 at the Runway DER 145 at the end of the VA or VI leg 200 Ground Speed to 11000 FT 240 Ground Speed to 18000 FT 260 Ground Speed to 24000 FT 340 Ground Speed above 24000 FT
Descent During a Turn:	Allowed
VNAV Mode:	Flight Plan

DME DME Assessment Results for CHADM4 path KBNA:RW02R:DER_SHWIT

DME/DME	
RNP:	RNP 2
Flight Mode:	Manual
Line of Sight (DTED Level 0 Max):	Evaluated
Inertial Drift:	Enabled
Initial Drift:	0.558 NM
INS Drift Rate:	8.0 NM/Hour
Range Mode:	OSV
RNP Edges:	Evaluated
Min DME Range:	3.0 NM
DME Types:	DME, VOR-DME, VORTAC, TACAN
DME Include Angles:	30 to 150
Critical DMEs:	Not Allowed
DoD Facilities:	Not included
Foreign Facilities:	Not included
High DMEs:	Included
Low DMEs:	Included
Terminal DMEs:	Included
Flight Check DMEs:	Not selected
Higher Altitudes:	Not Evaluated
Near Maximum Altitude:	Not Evaluated
Automatic ESVs:	Not enabled
Disabled DMEs:	None

DME/DME (Continued)										
DMEs Used										
#	Name	Lat/Lon	MAGVAR	Range	Type	Source	Critical	Status	Time	Distance

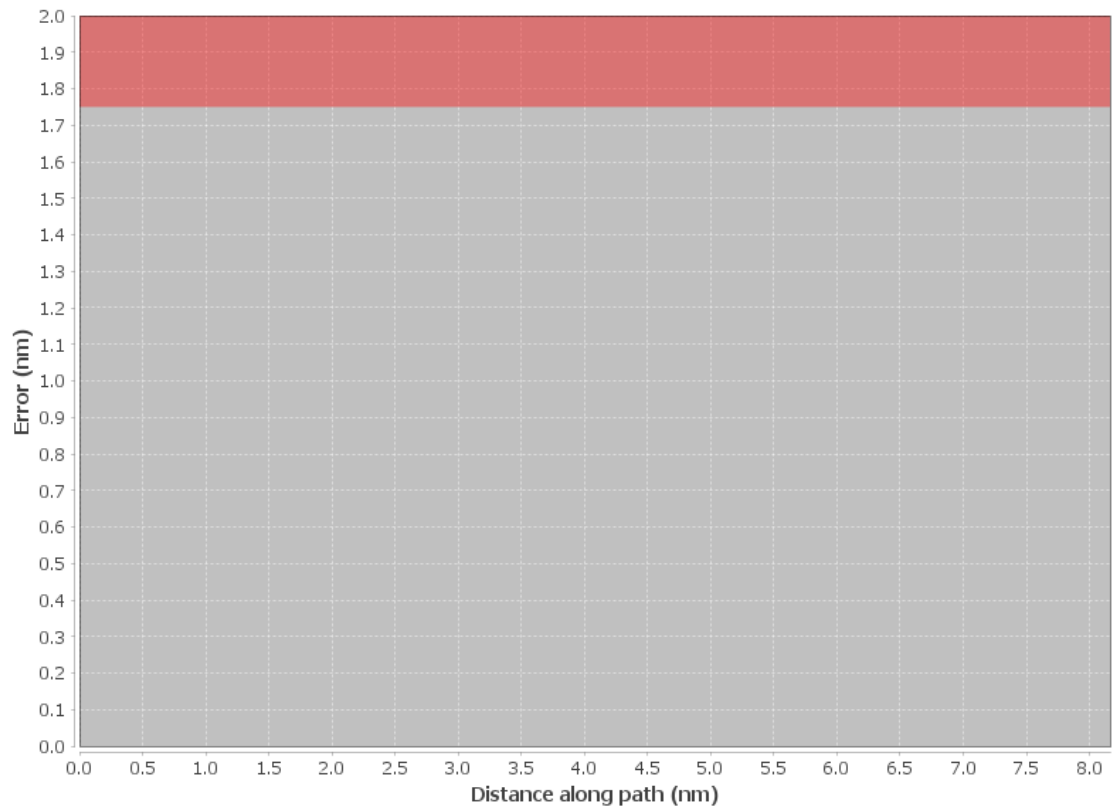
Flight Check DME Selection						
Distance [NM]	Selected DMEs					Alternate
0.0						

Inertial Drift Segments			
#	Start Location	End Location	Length [NM]
1	N36° 08' 03.0725", W086° 39' 32.5704"	N36° 13' 37.6700", W086° 33' 07.0800"	7.7384

Available DMEs by Waypoints			
Waypoint Before	Waypoint After	DME List	Suggested DMEs
KBNA:RW02R:DER	SHWIT		

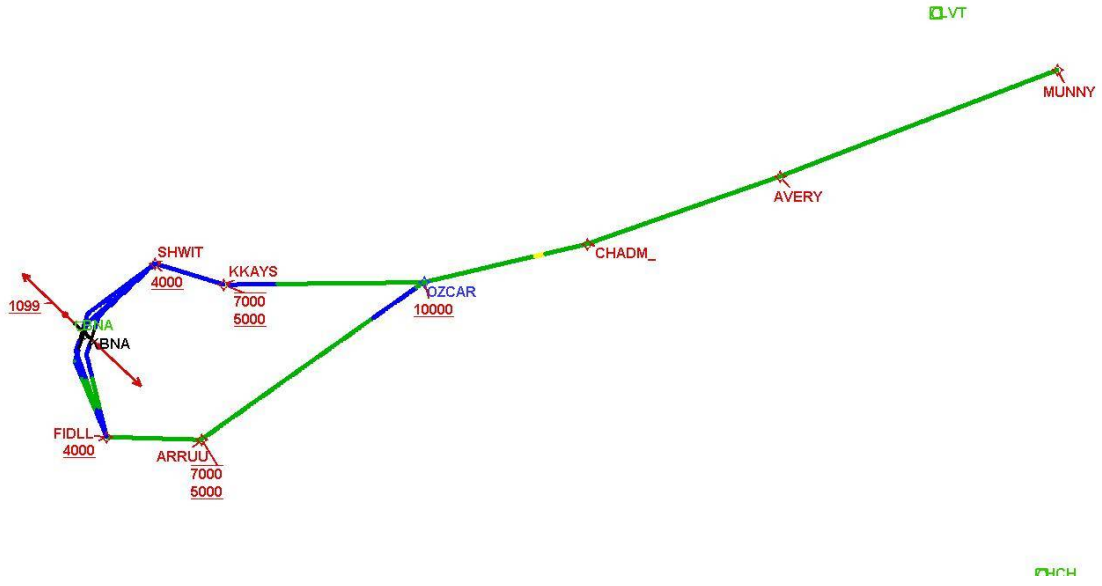
User Data Files								
#	File Name							
None								
User DMEs								
#	Name	Lat/Lon	MAGVAR	Range	Elevation [ft]	Frequency	Replaces	Status
1	LVT FAA 210523-9 LVT	N36° 35' 04.2340", W085° 09' 59.8430"	2.0 W	40	1020	114.35	LVT FAA 210523-9	
ESV:		Bearing [True]: 238.0° to 250.0° Bearing [Mag]: 240.0° to 252.0°				Arc Distance: Out to 61.0 NM Altitude: 4800.0 to 20000.0 ft		
2	GHM FAA 755483-13 GHM	N35° 50' 02.1911", W087° 27' 06.4824"	0.0 E	40	774.1	111.6	GHM FAA 755483-13	
ESV:		Bearing [True]: 52.0° to 109.0° Bearing [Mag]: 52.0° to 109.0°				Arc Distance: Out to 65.0 NM Altitude: 4000.0 to 20000.0 ft		
3	HCH FAA 700766-35 HCH	N35° 46' 51.6470", W084° 58' 42.4280"	2.0 W	130	3040	117.6	HCH FAA 700766-35	
ESV:		Bearing [True]: 288.0° to 300.0° Bearing [Mag]: 290.0° to 302.0°				Arc Distance: Out to 83.0 NM Altitude: 5000.0 to 8800.0 ft		

DME Error



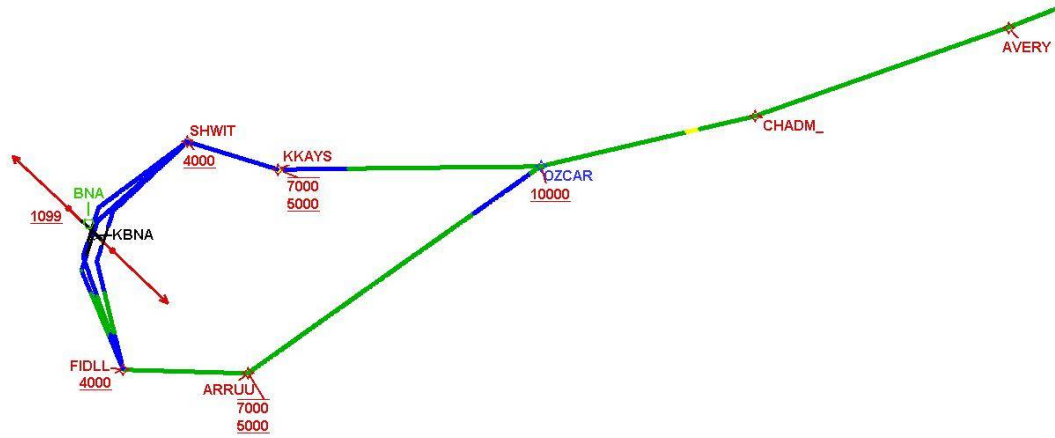
DME DME Assessment Results for CHADM4 path KBNA:RW02R:DER_SHWIT

Graphic Depiction 1



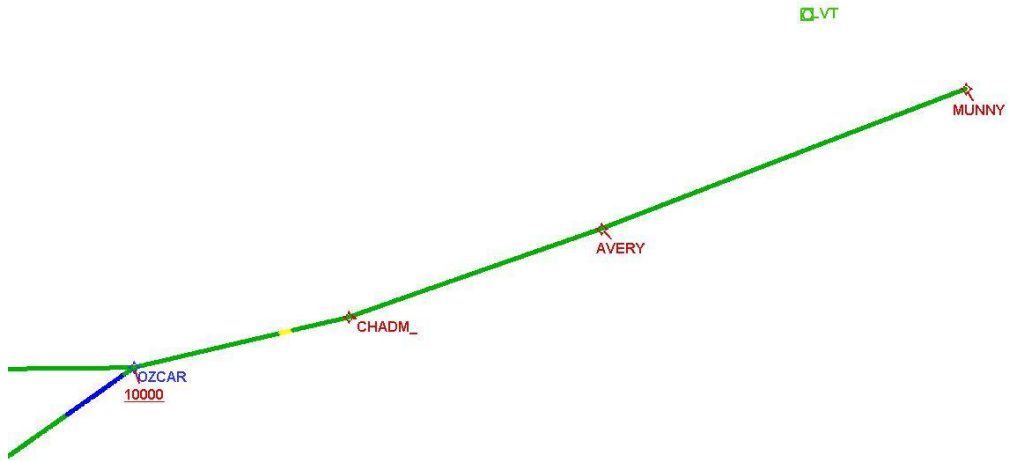
DME DME Assessment Results for CHADM4 path KBNA:RW02R:DER_SHWIT

Graphic Depiction 2



DME DME Assessment Results for CHADM4 path KBNA:RW02R:DER_SHWIT

Graphic Depiction 3



DME DME Assessment Results for CHADM4 path KBNA:RW20C:DER_MUNNY

Results Summary

Flyability:	Completed
DME/DME:	Completed - No Critical DMEs
Name:	Mark CTR Thompson
Project File:	C:\Users\Mark CTR Thompson\OneDrive - Federal Aviation Administration\Desktop\RNAV Projects\RNAV Projects 2025\BNA SIDs\CHADM4 SID\DME\KBNA CHADM4 (RNAV) SID DME 03 MAR 2025.tgs
Output File:	C:\Users\Mark CTR Thompson\OneDrive - Federal Aviation Administration\Desktop\RNAV Projects\RNAV Projects 2025\BNA SIDs\CHADM4 SID\DME\KBNA [IFPA] CHADM4 20250303_0810 EST\KBNA-RW20C-DER_MUNNY\KBNA CHADM4 SID RW20C MUNNY 20250303_0810 EST.pdf
Procedure Name:	CHADM4
Software: DmeDmePlugin:	7.4.1
Date/Time:	03/03/2025 08:10 EST
Databases:	MITRE 3DEP 3 arcsec

Failures

No Failures

Warnings

No Warnings

Informational

No Informational

Notes For Flight Check

None

Flight Plan

Name	Type	Lat/Lon	Altitude (ft)	VNAV Mode	Ground Speed (kts)	Turn Type	Leg Type
KBNA:RW20C:DER	WP	N36° 06' 11.9899", W086° 41' 16.6591"	569.1	VNAV	130	FLY_BY	TF
FIDLL	WP	N35° 58' 44.0600", W086° 38' 18.8900"	4000	VNAV	200	FLY_BY	TF
ARRUU	WP	N35° 58' 29.8200", W086° 28' 12.1100"	5642.3	VNAV	200	FLY_BY	TF
OZCAR	WP	N36° 12' 01.3900", W086° 04' 30.2800"	10000	VNAV	200	FLY_BY	TF
CHADM_	WP	N36° 15' 18.1600", W085° 47' 09.5200"	16000	VNAV	240	FLY_BY	TF
AVERY	WP	N36° 21' 05.7300", W085° 26' 40.7600"	16000	VNAV	240	FLY_BY	TF
MUNNY	WP	N36° 30' 14.4500", W084° 57' 10.4400"	16000	VNAV	240	FLY_BY	TF

Climb Gradient:
500.0 ft/NM up to 1099.0 ft MSL
200.0 ft/NM

DME DME Assessment Results for CHADM4 path KBNA:RW20C:DER_MUNNY

Flyability	
Flight Type:	SID
Selected Airport:	KBNA [IFPA]
Climb Gradient:	500.0 ft/NM up to 1099.0 ft MSL 200.0 ft/NM
Speeds:	130 at the Runway DER
	145 at the end of the VA or VI leg
	200 Ground Speed to 11000 FT
	240 Ground Speed to 18000 FT
	260 Ground Speed to 24000 FT
	340 Ground Speed above 24000 FT
Descent During a Turn:	Allowed
VNAV Mode:	Flight Plan

DME/DME	
RNP:	RNP 2
Flight Mode:	Manual
Line of Sight (DTED Level 0 Max):	Evaluated
Inertial Drift:	Enabled
Initial Drift:	0.558 NM
INS Drift Rate:	8.0 NM/Hour
Range Mode:	OSV
RNP Edges:	Evaluated
Min DME Range:	3.0 NM
DME Types:	DME, VOR-DME, VORTAC, TACAN
DME Include Angles:	30 to 150
Critical DMEs:	Not Allowed
DoD Facilities:	Not included
Foreign Facilities:	Not included
High DMEs:	Included
Low DMEs:	Included
Terminal DMEs:	Included
Flight Check DMEs:	Not selected
Higher Altitudes:	Not Evaluated
Near Maximum Altitude:	Not Evaluated
Automatic ESVs:	Not enabled
Disabled DMEs:	None

DME/DME (Continued)										
DMEs Used										
#	Name	Lat/Lon	MAGVAR	Range	Type	Source	Critical	Status	Time	Distance
1	SYI	N35° 33' 43.1090", W086° 26' 20.9383"	1.0 W	40	L		NO	Enabled	33 %	30.2 %
2	BWG	N36° 57' 52.0000", W086° 25' 24.0000"	0.0 E	130	DH		NO	Enabled	51.6 %	56.6 %
3	BNA	N36° 08' 13.0573", W086° 41' 05.1762"	2.0 W	130	H		NO	Enabled	80.9 %	83.7 %
4	GQO	N34° 57' 40.5850", W085° 09' 12.1285"	0.0 E	130	H		NO	Enabled	39.8 %	45.4 %
5	VXV	N35° 54' 17.4193", W083° 53' 40.9934"	3.0 W	130	H		NO	Enabled	39.1 %	44.7 %
6	LOZ	N37° 01' 59.3414", W084° 06' 36.2688"	3.0 W	130	DH		NO	Enabled	53.3 %	58.2 %
7	LVT	N36° 35' 04.2340", W085° 09' 59.8430"	2.0 W	40	L		NO	Enabled	44 %	49.4 %
8	HCH	N35° 46' 51.6470", W084° 58' 42.4280"	2.0 W	130	DH		NO	Enabled	70.2 %	73.1 %
9	GHM	N35° 50' 02.1911", W087° 27' 06.4824"	0.0 E	40	L		NO	Enabled	26.5 %	25.2 %

DME DME Assessment Results for CHADM4 path KBNA:RW20C:DER_MUNNY

Flight Check DME Selection						
Distance [NM]	Selected DMEs					Alternate
0.0						
1.0	HCH	BNA				
1.1						
2.6	SYI	HCH				
3.7	HCH	BNA	SYI			
5.8						
8.1	GHM	BNA	SYI			
24.8	SYI	HCH	BNA	GHM		
32.6	SYI	HCH	BNA			
34.3						
38.9	LVT	HCH				
40.6	HCH	LOZ				
42.2	BWG	BNA	LOZ	HCH		
49.8	LVT	BWG	BNA	HCH	LOZ	
50.1	LVT	BWG	HCH	LOZ		
50.4	BWG	LOZ	HCH			
51.3	LVT	BWG	HCH	LOZ		
52.0	LVT	BWG	HCH	BNA	LOZ	

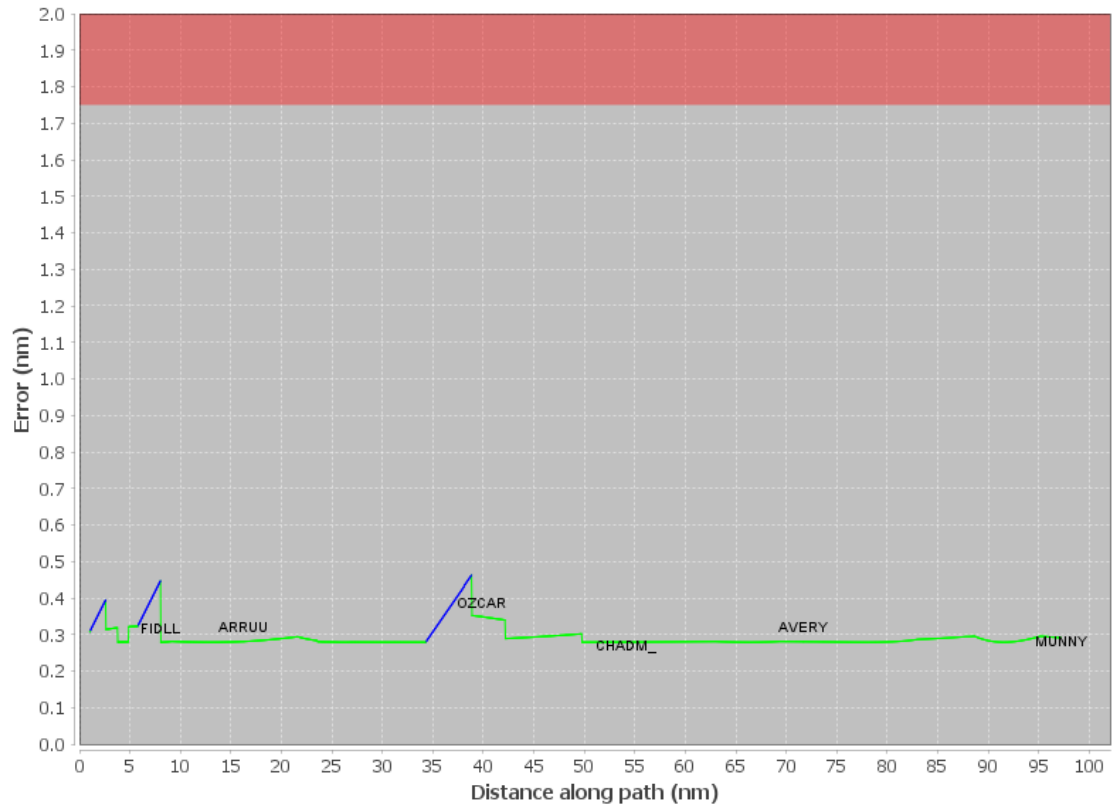
Inertial Drift Segments			
#	Start Location	End Location	Length [NM]
1	N36° 06' 09.9710", W086° 41' 17.4667"	N36° 05' 13.4401", W086° 41' 40.0744"	0.9891
2	N36° 05' 11.2996", W086° 41' 40.9303"	N36° 03' 44.5133", W086° 40' 55.5976"	1.5689
3	N36° 00' 48.6999", W086° 39' 23.8545"	N35° 58' 44.0600", W086° 38' 18.8900"	2.2527
4	N36° 08' 54.9370", W086° 09' 58.3895"	N36° 11' 31.2901", W086° 05' 23.3073"	4.5281

Available DMEs by Waypoints			
Waypoint Before	Waypoint After	DME List	Suggested DMEs
KBNA:RW20C:DER	FIDLL	SYI, BNA, HCH, GHM	
FIDLL	ARRUU	SYI, BNA, GHM	
ARRUU	OZCAR	SYI, BNA, LVT, HCH, GHM	
OZCAR	CHADM_	BWG, BNA, GQO, VXV, LOZ, LVT, HCH	
CHADM_	AVERY	BWG, GQO, BNA, VXV, LOZ, LVT, HCH	
AVERY	MUNNY	BWG, GQO, BNA, VXV, LOZ, LVT, HCH	

User Data Files								
#	File Name							
None								
User DMEs								
#	Name	Lat/Lon	MAGVAR	Range	Elevation [ft]	Frequency	Replaces	Status
1	LVT FAA 210523-9 LVT	N36° 35' 04.2340", W085° 09' 59.8430"	2.0 W	40	1020	114.35	LVT FAA 210523-9	
ESV:		Bearing [True]: 238.0° to 250.0° Bearing [Mag]: 240.0° to 252.0°				Arc Distance: Out to 61.0 NM Altitude: 4800.0 to 20000.0 ft		
2	GHM FAA 755483-13 GHM	N35° 50' 02.1911", W087° 27' 06.4824"	0.0 E	40	774.1	111.6	GHM FAA 755483-13	
ESV:		Bearing [True]: 52.0° to 109.0° Bearing [Mag]: 52.0° to 109.0°				Arc Distance: Out to 65.0 NM Altitude: 4000.0 to 20000.0 ft		
3	HCH FAA 700766-35 HCH	N35° 46' 51.6470", W084° 58' 42.4280"	2.0 W	130	3040	117.6	HCH FAA 700766-35	
ESV:		Bearing [True]: 288.0° to 300.0° Bearing [Mag]: 290.0° to 302.0°				Arc Distance: Out to 83.0 NM Altitude: 5000.0 to 8800.0 ft		

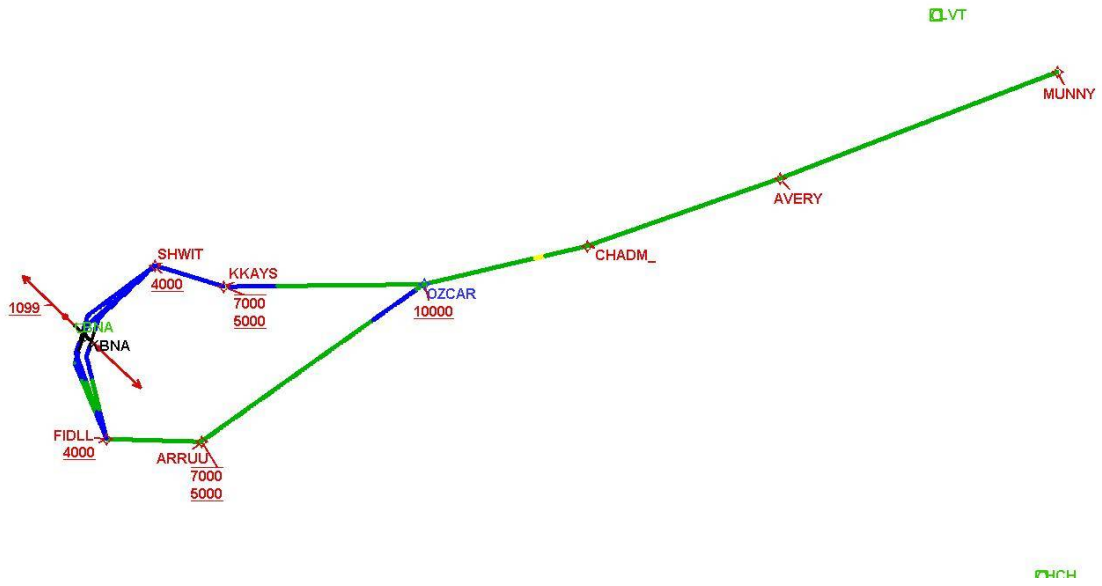
DME DME Assessment Results for CHADM4 path KBNA:RW20C:DER_MUNNY

DME Error



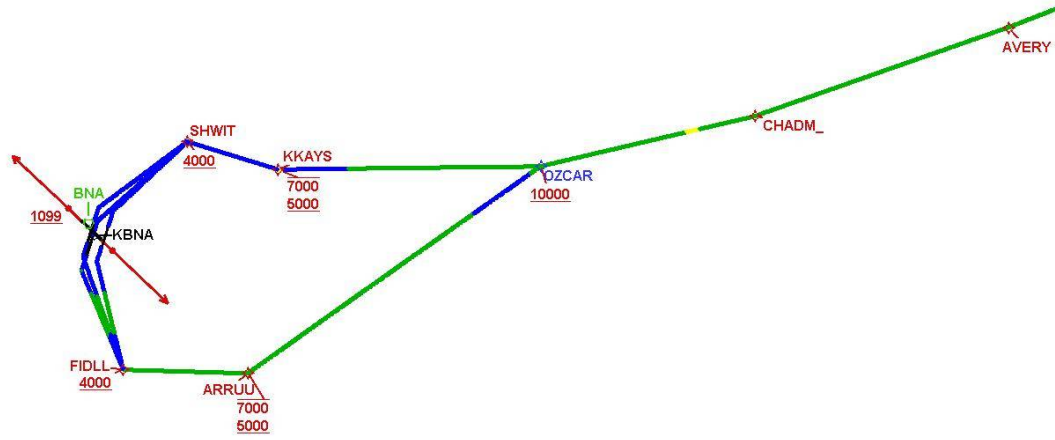
DME DME Assessment Results for CHADM4 path KBNA:RW20C:DER_MUNNY

Graphic Depiction 1



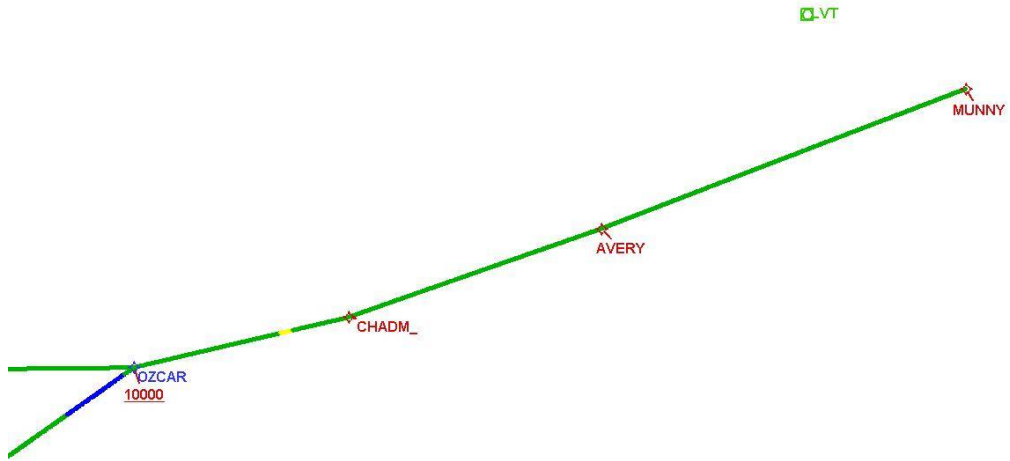
DME DME Assessment Results for CHADM4 path KBNA:RW20C:DER_MUNNY

Graphic Depiction 2



DME DME Assessment Results for CHADM4 path KBNA:RW20C:DER_MUNNY

Graphic Depiction 3



DME DME Assessment Results for CHADM4 path KBNA:RW20L:DER_FIDLL

Results Summary	
Flyability:	Completed
DME/DME:	Completed - No Critical DMEs
Name:	Mark CTR Thompson
Project File:	C:\Users\Mark CTR Thompson\OneDrive - Federal Aviation Administration\Desktop\RNAV Projects\RNAV Projects 2025\BNA SIDs\CHADM4 SID\DME\KBNA CHADM4 (RNAV) SID DME 03 MAR 2025.tgs
Output File:	C:\Users\Mark CTR Thompson\OneDrive - Federal Aviation Administration\Desktop\RNAV Projects\RNAV Projects 2025\BNA SIDs\CHADM4 SID\DME\KBNA [IFPA] CHADM4 20250303_0810 EST\KBNA-RW20L-DER_FIDLL\KBNA CHADM4 SID RW20L FIDLL 20250303_0810 EST.pdf
Procedure Name:	CHADM4
Software: DmeDmePlugin:	7.4.1
Date/Time:	03/03/2025 08:10 EST
Databases:	MITRE 3DEP 3 arcsec

Failures
No Failures

Warnings
No Warnings

Informational
No Informational

Notes For Flight Check
None

Flight Plan							
Name	Type	Lat/Lon	Altitude (ft)	VNAV Mode	Ground Speed (kts)	Turn Type	Leg Type
KBNA:RW20L:DER	WP	N36° 06' 45.7670", W086° 40' 03.5138"	589.8	VNAV	130	FLY_BY	TF
FIDLL	WP	N35° 58' 44.0600", W086° 38' 18.8900"	4000	VNAV	200	FLY_BY	TF
Climb Gradient: 500.0 ft/NM up to 1099.0 ft MSL 200.0 ft/NM							

Flyability	
Flight Type:	SID
Selected Airport:	KBNA [IFPA]
Climb Gradient:	500.0 ft/NM up to 1099.0 ft MSL 200.0 ft/NM
Speeds:	130 at the Runway DER 145 at the end of the VA or VI leg 200 Ground Speed to 11000 FT 240 Ground Speed to 18000 FT 260 Ground Speed to 24000 FT 340 Ground Speed above 24000 FT
Descent During a Turn:	Allowed
VNAV Mode:	Flight Plan

DME DME Assessment Results for CHADM4 path KBNA:RW20L:DER_FIDLL

DME/DME	
RNP:	RNP 2
Flight Mode:	Manual
Line of Sight (DTED Level 0 Max):	Evaluated
Inertial Drift:	Enabled
Initial Drift:	0.558 NM
INS Drift Rate:	8.0 NM/Hour
Range Mode:	OSV
RNP Edges:	Evaluated
Min DME Range:	3.0 NM
DME Types:	DME, VOR-DME, VORTAC, TACAN
DME Include Angles:	30 to 150
Critical DMEs:	Not Allowed
DoD Facilities:	Not included
Foreign Facilities:	Not included
High DMEs:	Included
Low DMEs:	Included
Terminal DMEs:	Included
Flight Check DMEs:	Not selected
Higher Altitudes:	Not Evaluated
Near Maximum Altitude:	Not Evaluated
Automatic ESVs:	Not enabled
Disabled DMEs:	None

DME/DME (Continued)										
DMEs Used										
#	Name	Lat/Lon	MAGVAR	Range	Type	Source	Critical	Status	Time	Distance
1	SYI	N35° 33' 43.1090", W086° 26' 20.9383"	1.0 W	40	L		NO	Enabled	32.2 %	34.1 %
2	BNA	N36° 08' 13.0573", W086° 41' 05.1762"	2.0 W	130	H		NO	Enabled	17.7 %	18.7 %
3	HCH	N35° 46' 51.6470", W084° 58' 42.4280"	2.0 W	130	DH		NO	Enabled	32.2 %	34.1 %
4	GHM	N35° 50' 02.1911", W087° 27' 06.4824"	0.0 E	40	L		NO	Enabled		

Flight Check DME Selection						
Distance [NM]	Selected DMEs				Alternate	
0.0						
3.1	SYI	HCH				
4.3	HCH	BNA	SYI			
5.9						
8.3	GHM	BNA	SYI			

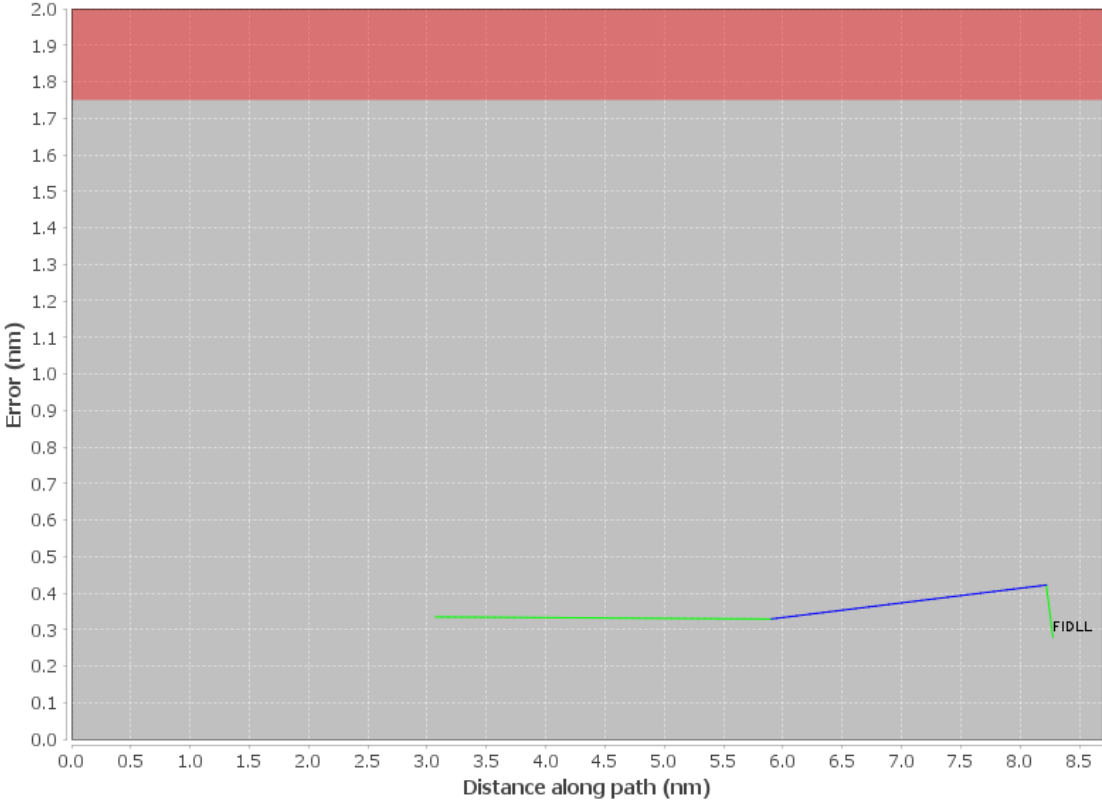
Inertial Drift Segments			
#	Start Location	End Location	Length [NM]
1	N36° 06' 43.7602", W086° 40' 04.3168"	N36° 03' 47.9543", W086° 39' 50.6316"	3.0341
2	N36° 00' 59.8455", W086° 38' 59.8567"	N35° 58' 44.0600", W086° 38' 18.8900"	2.3267

Available DMEs by Waypoints			
Waypoint Before	Waypoint After	DME List	Suggested DMEs
KBNA:RW20L:DER	FIDLL	SYI, BNA, HCH, GHM	

DME DME Assessment Results for CHADM4 path KBNA:RW20L:DER_FIDLL

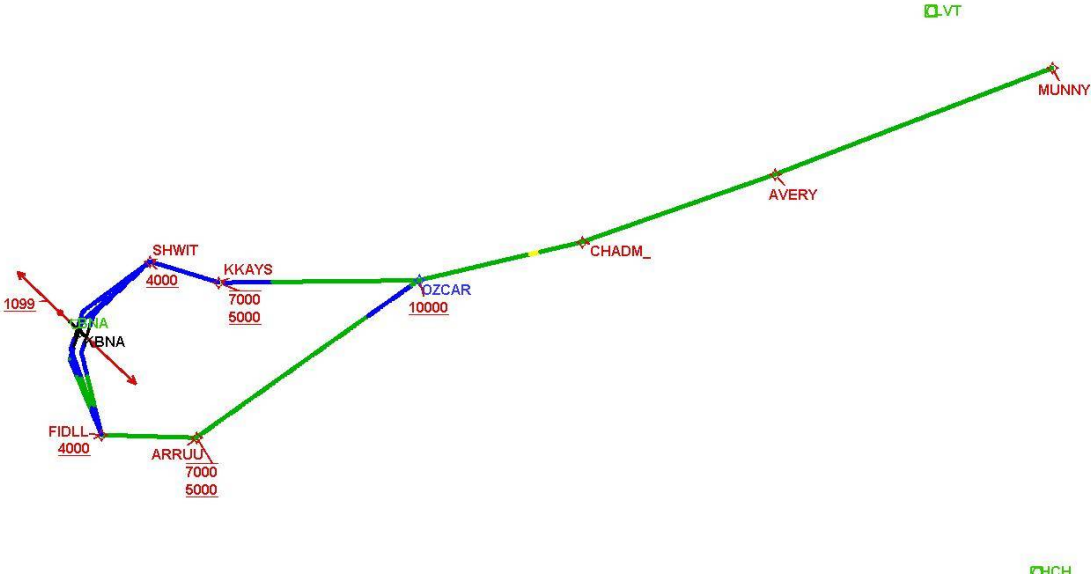
User Data Files								
#	File Name							
None								
User DMEs								
#	Name	Lat/Lon	MAGVAR	Range	Elevation [ft]	Frequency	Replaces	Status
1	LVT FAA 210523-9 LVT	N36° 35' 04.2340", W085° 09' 59.8430"	2.0 W	40	1020	114.35	LVT FAA 210523-9	
ESV:		Bearing [True]: 238.0° to 250.0° Bearing [Mag]: 240.0° to 252.0°				Arc Distance: Out to 61.0 NM Altitude: 4800.0 to 20000.0 ft		
2	GHM FAA 755483-13 GHM	N35° 50' 02.1911", W087° 27' 06.4824"	0.0 E	40	774.1	111.6	GHM FAA 755483-13	
ESV:		Bearing [True]: 52.0° to 109.0° Bearing [Mag]: 52.0° to 109.0°				Arc Distance: Out to 65.0 NM Altitude: 4000.0 to 20000.0 ft		
3	HCH FAA 700766-35 HCH	N35° 46' 51.6470", W084° 58' 42.4280"	2.0 W	130	3040	117.6	HCH FAA 700766-35	
ESV:		Bearing [True]: 288.0° to 300.0° Bearing [Mag]: 290.0° to 302.0°				Arc Distance: Out to 83.0 NM Altitude: 5000.0 to 8800.0 ft		

DME Error



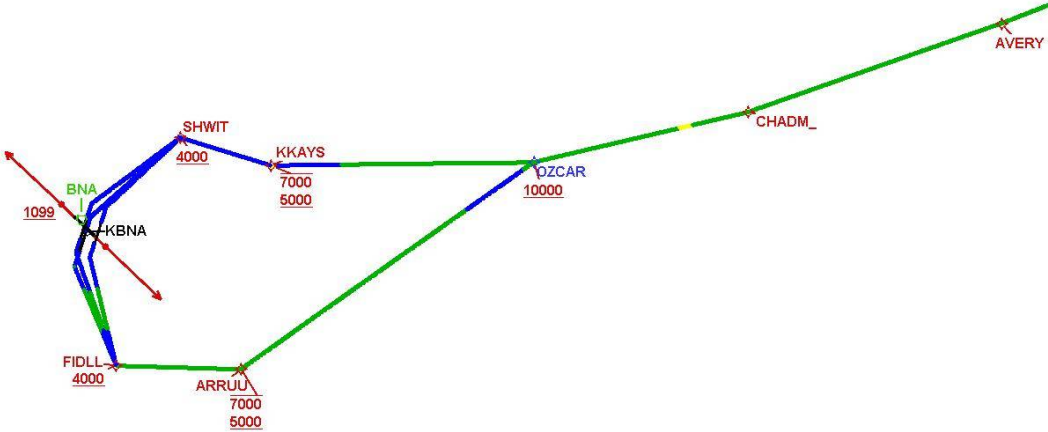
DME DME Assessment Results for CHADM4 path KBNA:RW20L:DER_FIDLL

Graphic Depiction 1



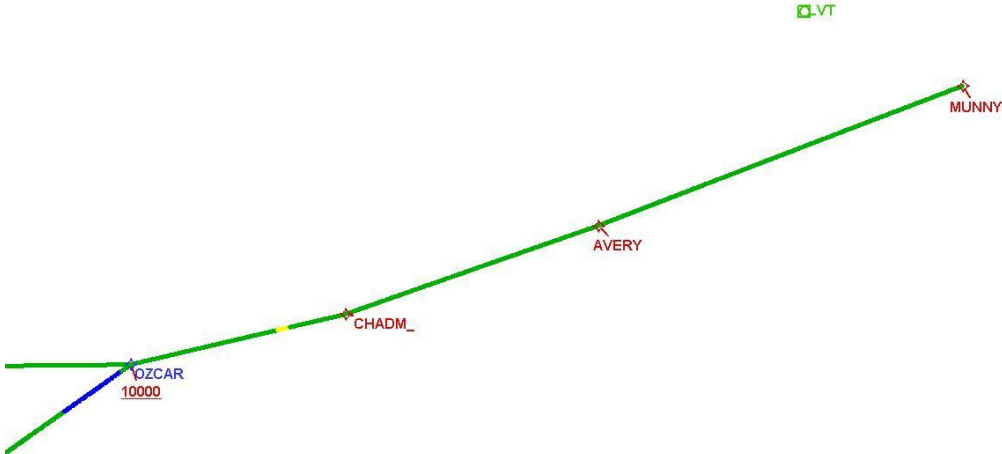
DME DME Assessment Results for CHADM4 path KBNA:RW20L:DER_FIDLL

Graphic Depiction 2



DME DME Assessment Results for CHADM4 path KBNA:RW20L:DER_FIDLL

Graphic Depiction 3



DME DME Assessment Results for CHADM4 path KBNA:RW20R:DER_FIDLL

Results Summary	
Flyability:	Completed
DME/DME:	Completed - No Critical DMEs
Name:	Mark CTR Thompson
Project File:	C:\Users\Mark CTR Thompson\OneDrive - Federal Aviation Administration\Desktop\RNAV Projects\RNAV Projects 2025\BNA SIDs\CHADM4 SID\DME\KBNA CHADM4 (RNAV) SID DME 03 MAR 2025.tgs
Output File:	C:\Users\Mark CTR Thompson\OneDrive - Federal Aviation Administration\Desktop\RNAV Projects\RNAV Projects 2025\BNA SIDs\CHADM4 SID\DME\KBNA [IFPA] CHADM4 20250303_0810 EST\KBNA-RW20R-DER_FIDLL\KBNA CHADM4 SID RW20R FIDLL 20250303_0810 EST.pdf
Procedure Name:	CHADM4
Software: DmeDmePlugin:	7.4.1
Date/Time:	03/03/2025 08:10 EST
Databases:	MITRE 3DEP 3 arcsec

Failures
No Failures

Warnings
No Warnings

Informational
No Informational

Notes For Flight Check
None

Flight Plan							
Name	Type	Lat/Lon	Altitude (ft)	VNAV Mode	Ground Speed (kts)	Turn Type	Leg Type
KBNA:RW20R:DER	WP	N36° 07' 03.6342", W086° 41' 11.3105"	598.7	VNAV	130	FLY_BY	TF
FIDLL	WP	N35° 58' 44.0600", W086° 38' 18.8900"	4000	VNAV	200	FLY_BY	TF
Climb Gradient: 500.0 ft/NM up to 1099.0 ft MSL 200.0 ft/NM							

Flyability	
Flight Type:	SID
Selected Airport:	KBNA [IFPA]
Climb Gradient:	500.0 ft/NM up to 1099.0 ft MSL 200.0 ft/NM
Speeds:	130 at the Runway DER
	145 at the end of the VA or VI leg
	200 Ground Speed to 11000 FT
	240 Ground Speed to 18000 FT
	260 Ground Speed to 24000 FT
	340 Ground Speed above 24000 FT
Descent During a Turn:	Allowed
VNAV Mode:	Flight Plan

DME DME Assessment Results for CHADM4 path KBNA:RW20R:DER_FIDLL

DME/DME	
RNP:	RNP 2
Flight Mode:	Manual
Line of Sight (DTED Level 0 Max):	Evaluated
Inertial Drift:	Enabled
Initial Drift:	0.558 NM
INS Drift Rate:	8.0 NM/Hour
Range Mode:	OSV
RNP Edges:	Evaluated
Min DME Range:	3.0 NM
DME Types:	DME, VOR-DME, VORTAC, TACAN
DME Include Angles:	30 to 150
Critical DMEs:	Not Allowed
DoD Facilities:	Not included
Foreign Facilities:	Not included
High DMEs:	Included
Low DMEs:	Included
Terminal DMEs:	Included
Flight Check DMEs:	Not selected
Higher Altitudes:	Not Evaluated
Near Maximum Altitude:	Not Evaluated
Automatic ESVs:	Not enabled
Disabled DMEs:	None

DME/DME (Continued)										
DMEs Used										
#	Name	Lat/Lon	MAGVAR	Range	Type	Source	Critical	Status	Time	Distance
1	SYI	N35° 33' 43.1090", W086° 26' 20.9383"	1.0 W	40	L		NO	Enabled	28 %	29.6 %
2	BNA	N36° 08' 13.0573", W086° 41' 05.1762"	2.0 W	130	H		NO	Enabled	17.3 %	18.2 %
3	HCH	N35° 46' 51.6470", W084° 58' 42.4280"	2.0 W	130	DH		NO	Enabled	28 %	29.6 %
4	GHM	N35° 50' 02.1911", W087° 27' 06.4824"	0.0 E	40	L		NO	Enabled		

Flight Check DME Selection						
Distance [NM]	Selected DMEs				Alternate	
0.0						
3.7	SYI	HCH				
4.7	HCH	BNA	SYI			
6.3						
8.8	GHM	BNA	SYI			

Inertial Drift Segments			
#	Start Location	End Location	Length [NM]
1	N36° 07' 01.5881", W086° 41' 12.1129"	N36° 03' 35.7887", W086° 40' 27.3607"	3.6274
2	N36° 01' 05.2243", W086° 39' 21.0204"	N35° 58' 44.0600", W086° 38' 18.8900"	2.4951

Available DMEs by Waypoints			
Waypoint Before	Waypoint After	DME List	Suggested DMEs
KBNA:RW20R:DER	FIDLL	SYI, BNA, HCH, GHM	

DME DME Assessment Results for CHADM4 path KBNA:RW20R:DER_FIDLL

User Data Files

#	File Name
None	

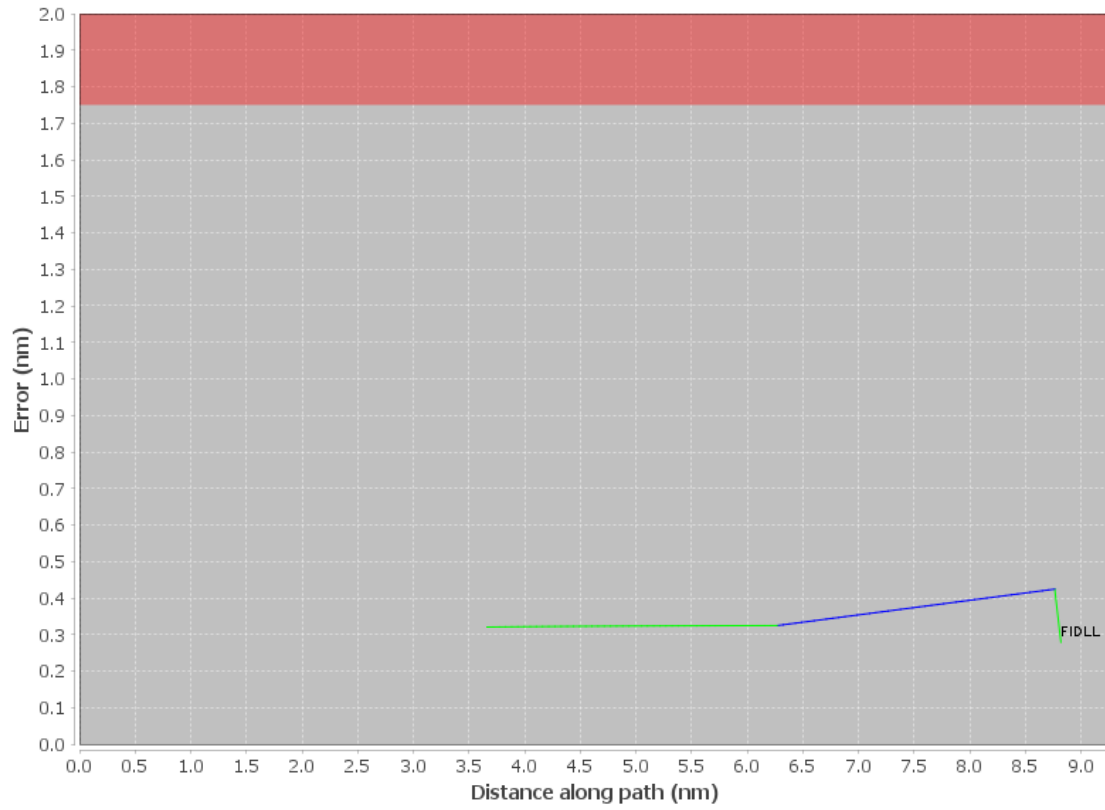
None

User DMEs

#	Name	Lat/Lon	MAGVAR	Range	Elevation [ft]	Frequency	Replaces	Status
1	LVT FAA 210523-9 LVT	N36° 35' 04.2340", W085° 09' 59.8430"	2.0 W	40	1020	114.35	LVT FAA 210523-9	
	ESV:	Bearing [True]: 238.0° to 250.0° Bearing [Mag]: 240.0° to 252.0°				Arc Distance: Out to 61.0 NM Altitude: 4800.0 to 20000.0 ft		
2	GHM FAA 755483-13 GHM	N35° 50' 02.1911", W087° 27' 06.4824"	0.0 E	40	774.1	111.6	GHM FAA 755483-13	
	ESV:	Bearing [True]: 52.0° to 109.0° Bearing [Mag]: 52.0° to 109.0°				Arc Distance: Out to 65.0 NM Altitude: 4000.0 to 20000.0 ft		
3	HCH FAA 700766-35 HCH	N35° 46' 51.6470", W084° 58' 42.4280"	2.0 W	130	3040	117.6	HCH FAA 700766-35	
	ESV:	Bearing [True]: 288.0° to 300.0° Bearing [Mag]: 290.0° to 302.0°				Arc Distance: Out to 83.0 NM Altitude: 5000.0 to 8800.0 ft		

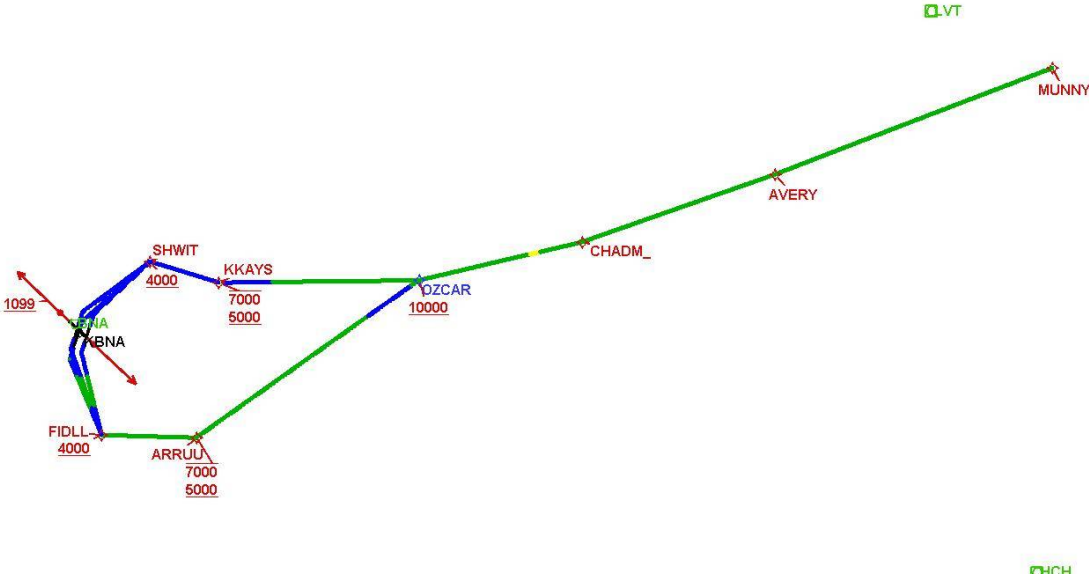
DME DME Assessment Results for CHADM4 path KBNA:RW20R:DER_FIDLL

DME Error



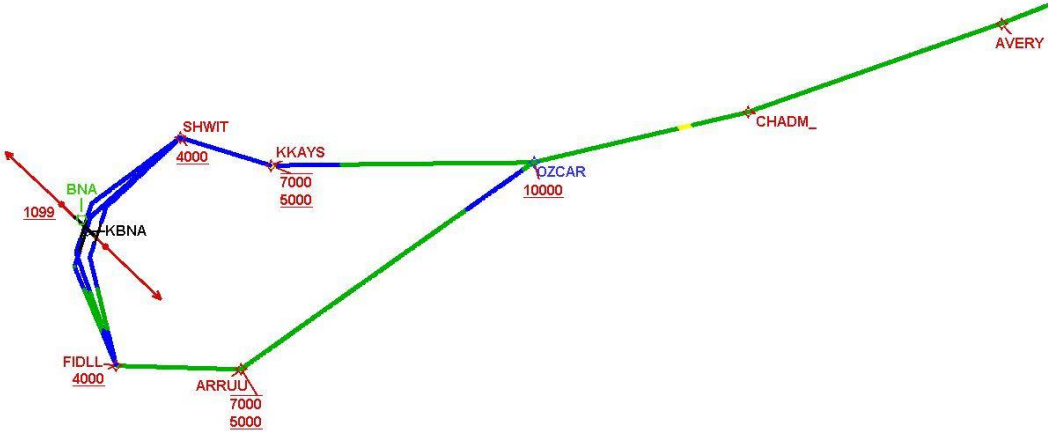
DME DME Assessment Results for CHADM4 path KBNA:RW20R:DER_FIDLL

Graphic Depiction 1



DME DME Assessment Results for CHADM4 path KBNA:RW20R:DER_FIDLL

Graphic Depiction 2



DME DME Assessment Results for CHADM4 path KBNA:RW20R:DER_FIDLL

Graphic Depiction 3

