

Flight Procedures Cover Page	Task Action: FLIGHT CHECK	Task Type: STAR	Estimated Chart Date: 01/22/2026	APWS Task ID: E230DE23221847EA90D714858FD29C47	APWS Project ID: E3AEFE0066A84216B10CF9391297DEA0
Procedure: HHOOD (RNAV) SIX ARRIVAL		Enroute: YES	Specialist: Gibson, Taylor		Agreement Number:
Airport ID: KPDX			Airport City: PORTLAND		State: OR
Facility ID:	Facility Type:	Flight Inspection Remark Type: New FC Slot			

Procedure Comments:
CONTACT ALLAN WILL 405-954-6103

QUALITY
38
CHECKED

QUALITY
11
CHECKED

FIPC DME/DME FORM

PROCEDURE: HHOOD (RNAV) SIX ARRIVAL		AIRPORT NAME: PORTLAND INTL		AIRPORT ID: KPDX	SPECIAL CONTROL NO: SG-11-096-25
FAC ID: HHOOD6		CITY: PORTLAND		ST: OR	ORIG CHART DATE: 03/19/2026
DFL TYPE: PROC/D	THIRD PARTY: <input type="checkbox"/> YES	EST. TIME ON SITE: 1.0	REIMB. NUMBER:	PTS TASK ID: E230DE23221847EA90D714858FD29C47	

PREFLIGHT NOTES

REVIEWER: jordan rolih			DATE: 12/23/2025		
COMMENTS:			CHECK ONE:		
			<input checked="" type="checkbox"/> FLT CK REQ <input type="checkbox"/> NFCR <input type="checkbox"/> REJECT		
			YES	NO	
			CPV COMPLETE?		X

PROCEDURE RESULTS

INSPECTION DATE: 12/22/2025	CREW #: VN408	N #: N71	INSTRUMENT PROCEDURE STATUS: <input checked="" type="checkbox"/> SAT <input type="checkbox"/> SAT W/CHANGES <input type="checkbox"/> UNSAT		ARINC CODING: <input checked="" type="checkbox"/> SAT <input type="checkbox"/> SAT/GOLD <input type="checkbox"/> UNSAT	
FLIGHT INSPECTOR SIGNATURE: jordan rolih @ 12/23/2025 10:47			PRINTED NAME: ROLIH, JORDAN ALEXANDER			NOTAM INITIATED? <input type="checkbox"/> YES <input checked="" type="checkbox"/> NO

FLIGHT INSPECTOR REMARKS:

DME/DME STATUS: <input type="checkbox"/> SAT <input type="checkbox"/> UNSAT	SPECIALIST SIGNATURE:	PRINTED NAME:
---	------------------------------	----------------------

SPECIALIST REMARKS:

IN-FLIGHT OBSTACLE REPORT

OBSTRUCTION ID #:	COORDINATES OR LOCATION:	GNSS ALTITUDE (MSL):	BAROMETRIC ALTITUDE (MSL):	HEIGHT ABOVE GROUND LEVEL:
--------------------------	---------------------------------	-----------------------------	-----------------------------------	-----------------------------------

HHOOD SIX ARRIVAL (RNAV)
(HHOOD.HHOOD6) FIG

PORTLAND APP CON
124.35 299.2
D-ATIS
128.35 269.9
GND CON
121.9 348.6
PORTLAND TOWER
118.7 257.8 (Rwy 10L-28R)
123.775 251.125 (Rwys 3-21, 10R-28L)

RNAV 1 - DME/DME/IRU or GPS.
RADAR required.

HHOOD
15000 250K
9000

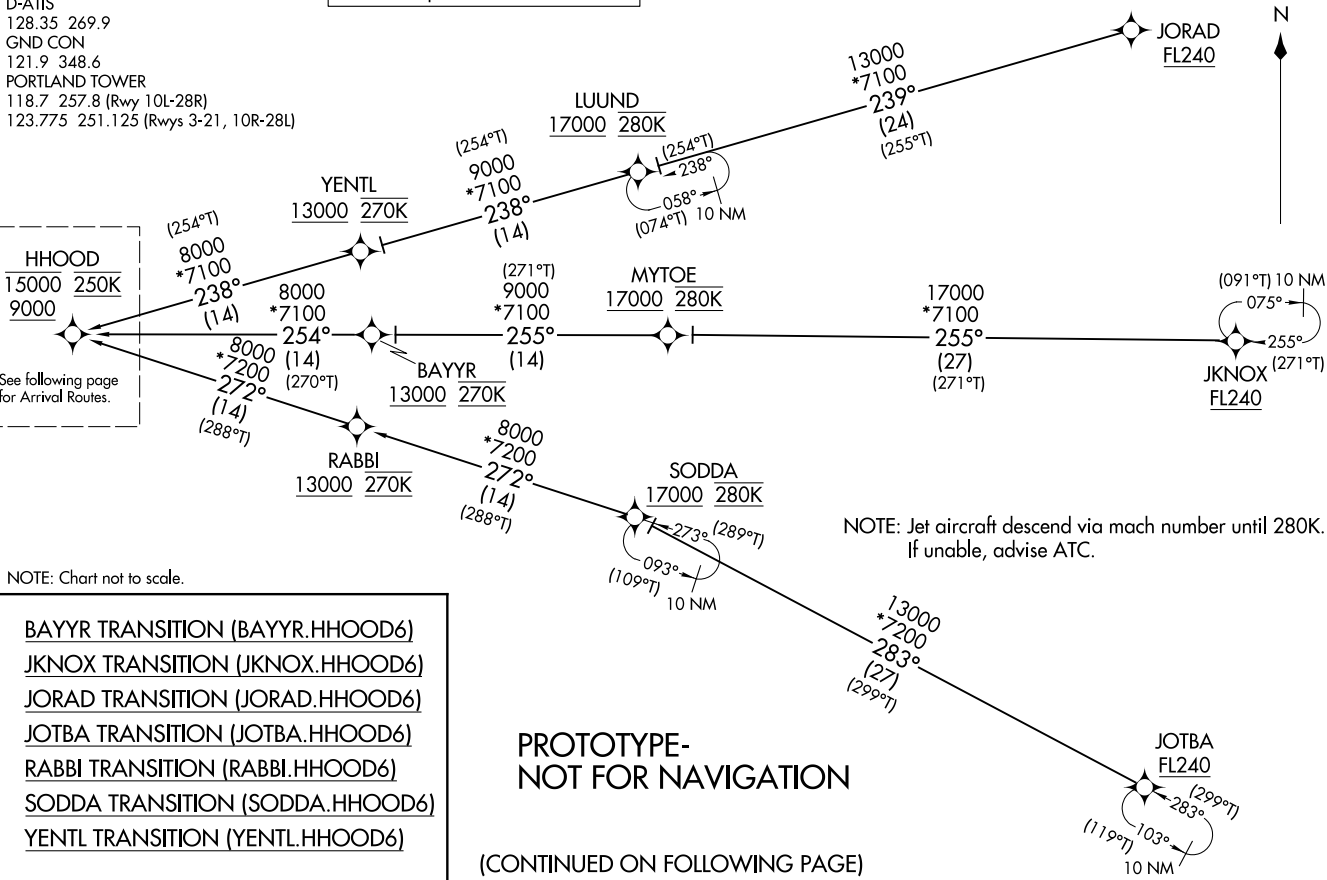
See following page
for Arrival Routes.

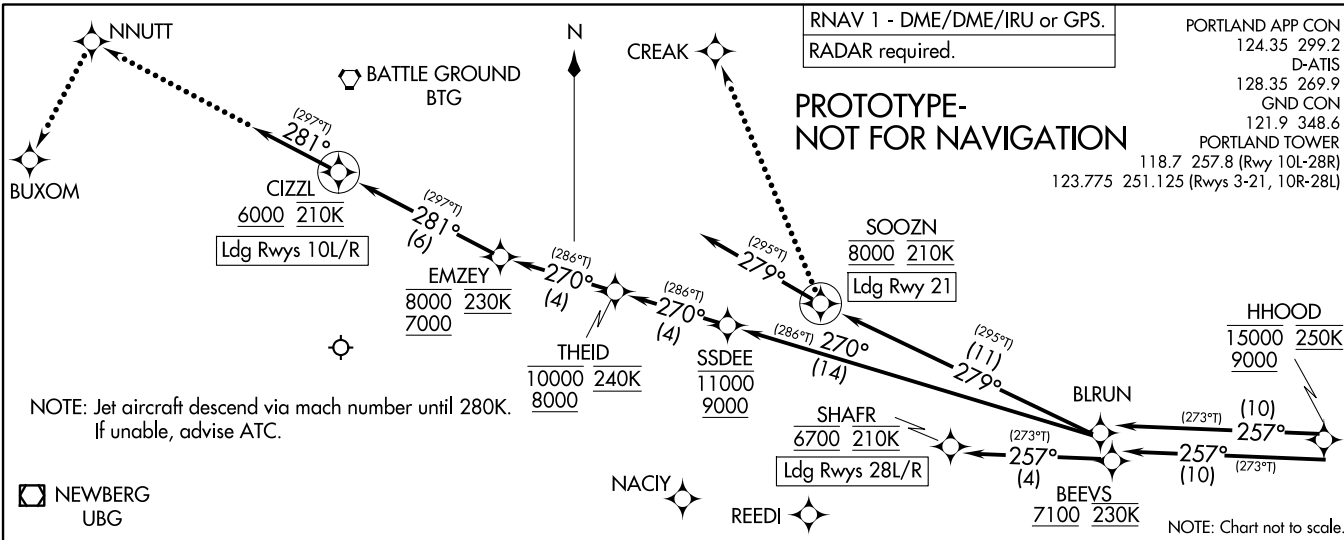
NOTE: Chart not to scale.

- BAYYR TRANSITION (BAYYR.HHOOD6)
- JKNOX TRANSITION (JKNOX.HHOOD6)
- JORAD TRANSITION (JORAD.HHOOD6)
- JOTBA TRANSITION (JOTBA.HHOOD6)
- RABBI TRANSITION (RABBI.HHOOD6)
- SODDA TRANSITION (SODDA.HHOOD6)
- YENTL TRANSITION (YENTL.HHOOD6)

PROTOTYPE-
NOT FOR NAVIGATION

(CONTINUED ON FOLLOWING PAGE)





ARRIVAL ROUTE DESCRIPTION

LANDING RUNWAYS 10L/R: From HHOOD on track 257° to BLRUN, then on track 270° to cross SSDEE between 9000 and 11000, then on track 270° to cross THEID between 8000 and 10000 and at 240K, then on track 270° to cross EMZEY between 7000 and 8000 and at 230K, then on track 281° to cross CIZZL at or above 6000 and at 210K, then on track 281°. Expect RNP Rwy 10L/R approach or RADAR vectors to final approach course.

LANDING RUNWAY 21: From HHOOD on track 257° to BLRUN, then on track 279° to cross SOOZN at 8000 and at 210K, then on track 279°. Expect RADAR vectors to final approach course.

LANDING RUNWAYS 28L/R: From HHOOD on track 257° to cross BEEVS at or above 7100 and at 230K, then on track 257° to cross SHAFR at 6700 and at 210K. Expect RNAV or ILS RWY 28L/R approach.

LOST COMMUNICATIONS

Follow published crossing altitudes and then maintain lowest Rwy transition altitude until established on approach procedure.

RUNWAYS 10L/R: After CIZZL, proceed to NNUTT, then left turn to BUXOM and proceed on the ILS RWY 10L approach.

RUNWAY 21: After SOOZN turn right to CREAK and proceed on the LOC/DME RWY 21 approach.

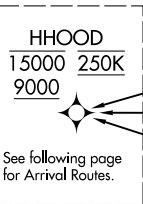
RUNWAYS 28L/R: After SHAFR proceed on the ILS or LOC RWY 28R approach.

OLD

HHOOD FIVE ARRIVAL (RNAV) Transition Routes
(HHOOD.HHOOD5) 31OCT24

PORTLAND APP CON
124.35 299.2
D-ATIS
128.35 269.9
GND CON
121.9 348.6
PORTLAND TOWER
118.7 257.8 (Rwy 10L-28R)
123.775 251.125 (Rwys 3-21, 10R-28L)

RNAV 1 - DME/DME/IRU or GPS.
RADAR required.

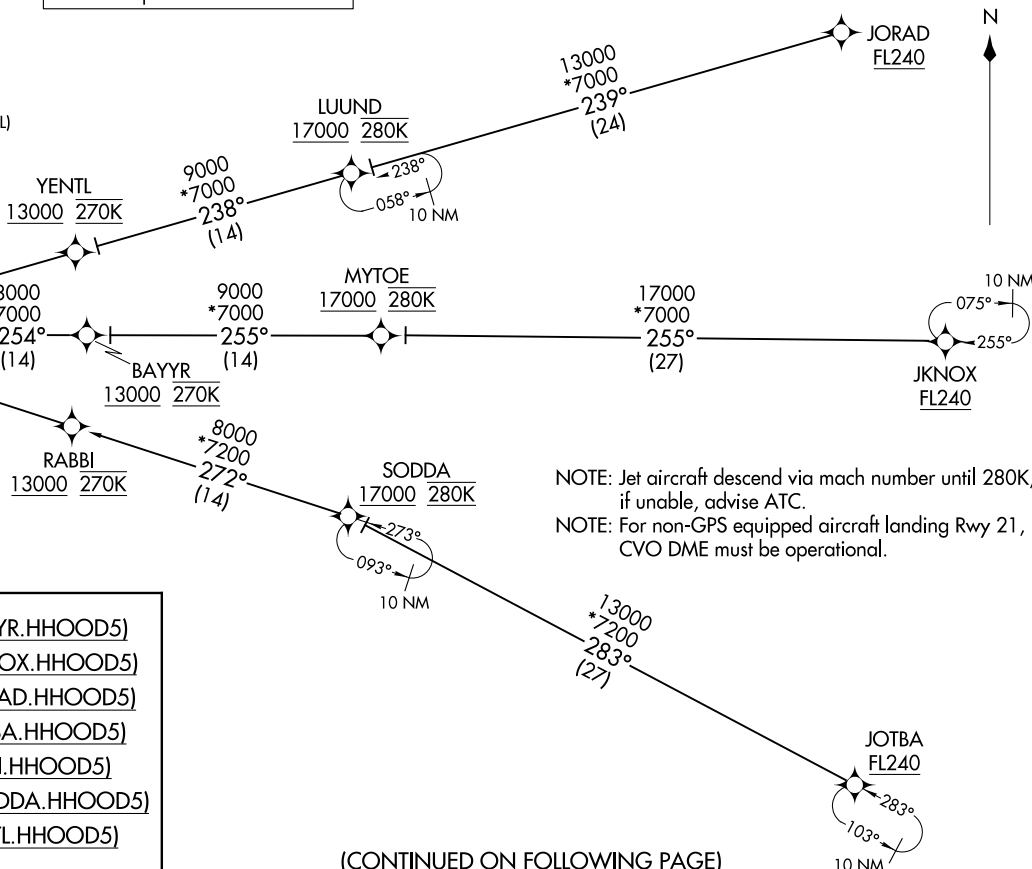


See following page for Arrival Routes.

NOTE: Chart not to scale.

- BAYYR TRANSITION (BAYYR.HHOOD5)
- JKNOX TRANSITION (JKNOX.HHOOD5)
- JORAD TRANSITION (JORAD.HHOOD5)
- JOTBA TRANSITION (JOTBA.HHOOD5)
- RABBI TRANSITION (RABBI.HHOOD5)
- SODDA TRANSITION (SODDA.HHOOD5)
- YENTL TRANSITION (YENTL.HHOOD5)

PORTLAND, OREGON
PORTLAND INTL (PDX)



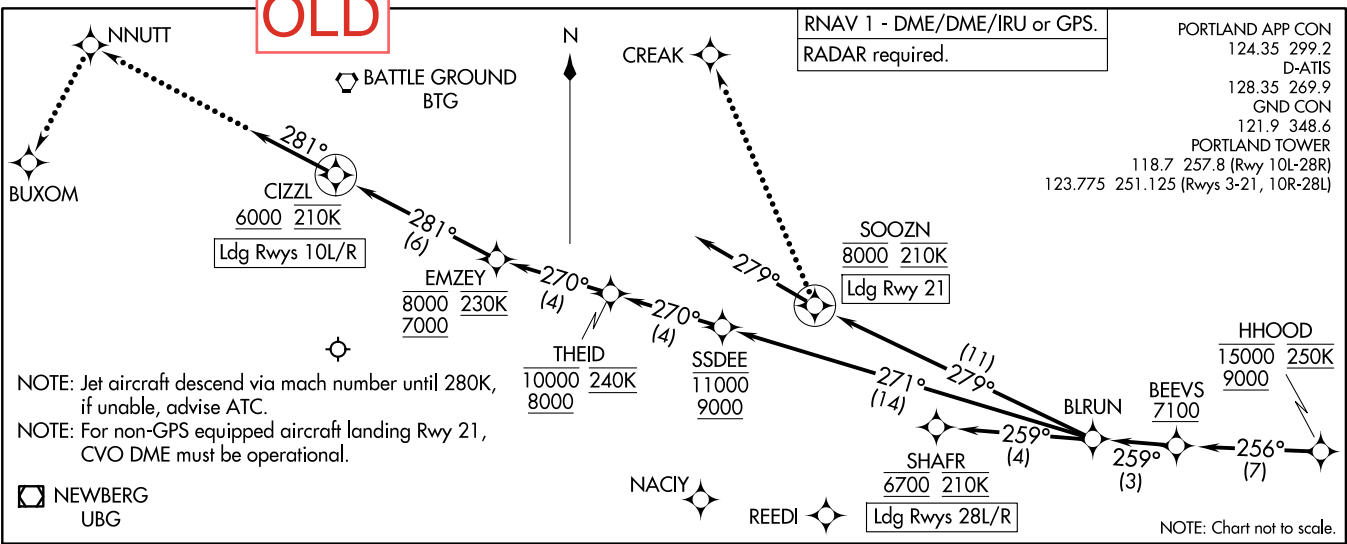
NOTE: Jet aircraft descend via mach number until 280K, if unable, advise ATC.
NOTE: For non-GPS equipped aircraft landing Rwy 21, CVO DME must be operational.

(CONTINUED ON FOLLOWING PAGE)

HHOOD FIVE ARRIVAL (RNAV) Transition Routes
(HHOOD.HHOOD5) 24305
AL-330 (FAA)

PORTLAND INTL (PDX)
PORTLAND, OREGON

OLD



NOTE: Jet aircraft descend via mach number until 280K, if unable, advise ATC.
 NOTE: For non-GPS equipped aircraft landing Rwy 21, CVO DME must be operational.

NEWBERG UBG

NOTE: Chart not to scale.

ARRIVAL ROUTE DESCRIPTION

From HHOOD on track 256° to cross BEEVVS at or above 7100, then on track 259° to BLRUN.
LANDING RUNWAYS 10L/R: From BLRUN on track 271° to cross SSDEE between 9000 and 11000, then on track 270° to cross THEID between 8000 and 10000 and at 240K, then on track 270° to cross EMZEY between 7000 and 8000 and at 230K, then on track 281° to cross CIZZL at or above 6000 and at 210K, then on track 281°. Expect RADAR vectors to final approach course.
LANDING RUNWAY 21: From BLRUN on track 279° to cross SOOZN at 8000 and at 210K, then on track 279°. Expect RADAR vectors to final approach course.
LANDING RUNWAYS 28L/R: From BLRUN on track 259° to cross SHAFR at 6700 and at 210K. Expect RNAV or ILS RWY 28L/R approach.

LOST COMMUNICATIONS
 Maintain Rwy transition terminus altitude until established on approach procedure.
RUNWAYS 10L/R: After CIZZL, proceed to NNUTT, then left turn to BUXOM, conduct the ILS or LOC RWY 10L approach.
RUNWAY 21: After SOOZN turn right to CREAK and proceed on the LOC/DME RWY 21 approach.
RUNWAYS 28L/R: After SHAFR proceed on the ILS or LOC RWY 28R approach.

HHOOD FIVE ARRIVAL (RNAV) Arrival Routes
 (HHOOD.HHOOD5) 31OCT24
 PORTLAND, OREGON
 PORTLAND INTL (PDX)
 PORTLAND, OREGON

(HHOOD.HHOOD5) 24305
 HHOOD FIVE ARRIVAL (RNAV) Arrival Routes
 AL-330 (FAA)
 PORTLAND INTL (PDX)
 PORTLAND, OREGON

Airport	KPDX
Apt Name	PORTLAND INTL
City	PORTLAND
State	OR
Proc ID	HHOOD SIX (RNAV)
Scale	1:800,000

