

Flight Procedures Cover Page	Task Action: P-NOTAM	Task Type: IAP	Estimated Chart Date: 02/20/2025	APWS Task ID: E28DF46D8D064F9F939EF6A4DC653202	APWS Project ID: B2089A6B9D094BFFB808A6041ED107FB
Procedure: RNAV (GPS) RWY 19 AMDT 1A		Enroute: NO	Specialist: Garrity, Michael		Agreement Number:
Airport ID: K88			Airport City: IOLA		State: KS
Facility ID:	Facility Type:	Flight Inspection Remark Type:			

Procedure Comments:

ACTIVE DATA USED FOR KK88 AIRPORT AND RUNWAYS.

PROCESSED IAW TECHNICAL SUPPORT GROUP (AJF-17) MEMO DATED 07/07/2021, SUBJECT: GUIDANCE FOR PROCEDURAL CHANGES REQUIRING FLIGHT INSPECTION/VALIDATION.

CONTACT: ALLAN WILL, TEAM 2 SUBTEAM-C MANAGER, 405.954.6103.

QUALITY
41
CHECKED

QUALITY
32
CHECKED

Digitally signed by
PABLO ORTIZ-JR

Nov 25, 2024

APP CRS	Rwy Idg	5501
189°	TDZE	1016
	Apt Elev	1016

RNAV (GPS) RWY 19

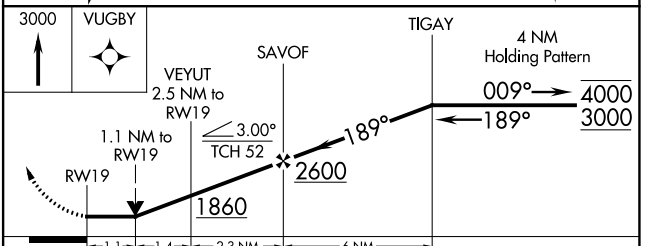
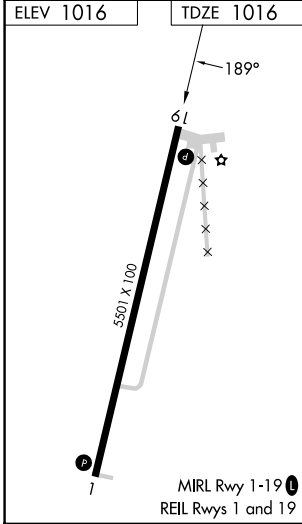
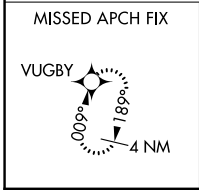
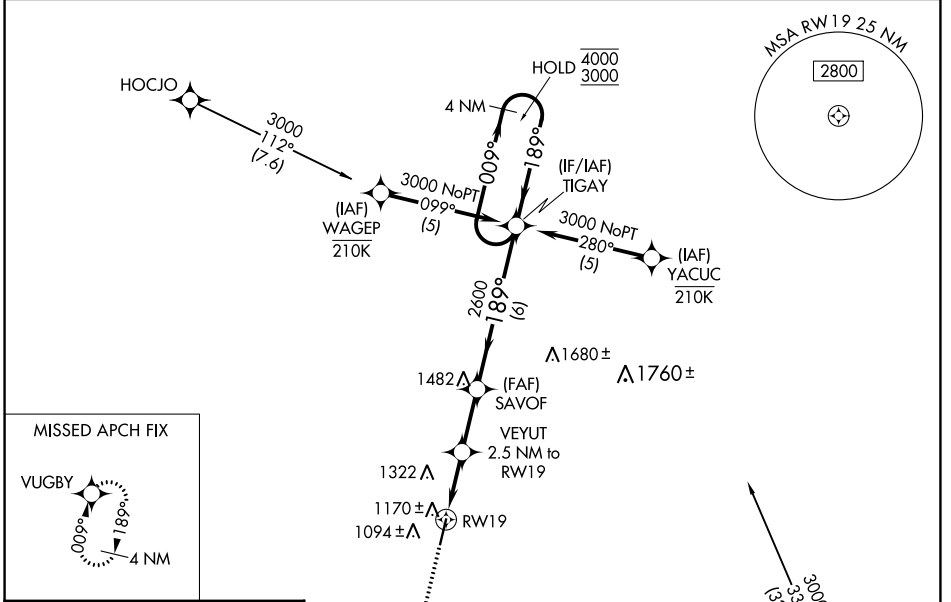
ALLEN COUNTY (K88)

RNP APCH - GPS.

⚠ Rwy 19 helicopter visibility reduction below 3/4 SM NA. When local altimeter setting not received, use Chanute altimeter setting; increase all MDAs 40 feet and LNAV visibility Cat C 1/2 SM and Circling visibility Cat C 1/4 SM. VDP NA when using Chanute altimeter setting.

MISSED APPROACH: Climb to 3000 direct VUGBY and hold.

AWOS-3PT 128.325	KANSAS CITY CENTER 127.725 270.25	UNICOM 122.8 (CTAF) 0
----------------------------	---------------------------------------------	---------------------------------



CATEGORY	A	B	C	D
LNAV MDA	1420-1	404 (500-1)	1420-1 1/8 404 (500-1 1/8)	NA
CIRCLING	1480-1 464 (500-1)	1660-1 644 (700-1)	1660-1 3/4 644 (700-1 3/4)	NA

NC-2, 05 SEP 2024 to 03 OCT 2024

NC-2, 05 SEP 2024 to 03 OCT 2024