

Flight Procedures Cover Page	Task Action: P-NOTAM	Task Type: IAP	Estimated Chart Date: 01/27/2022	APWS Task ID: E2E88A5183404B419A7D98444CCCE3C9	APWS Project ID: D8D71AE0933C4B778839BA2265FCF798
Procedure: RNAV (GPS) RWY 26 AMDT 1C		Enroute: NO	Specialist: Boone-walt, Rose		Agreement Number:
Airport ID: KBVX			Airport City: BATESVILLE		State: AR
Facility ID:	Facility Type:	Flight Inspection Remark Type:			

Procedure Comments:
PNOTAM
CIRCLING RADII INCREASE

CONTACT: JASON KRETSCHMER AJV-A421 LEAD: 405.954.4019

Digitally signed by
JASON KRETSCHMER
Dec 10, 2021



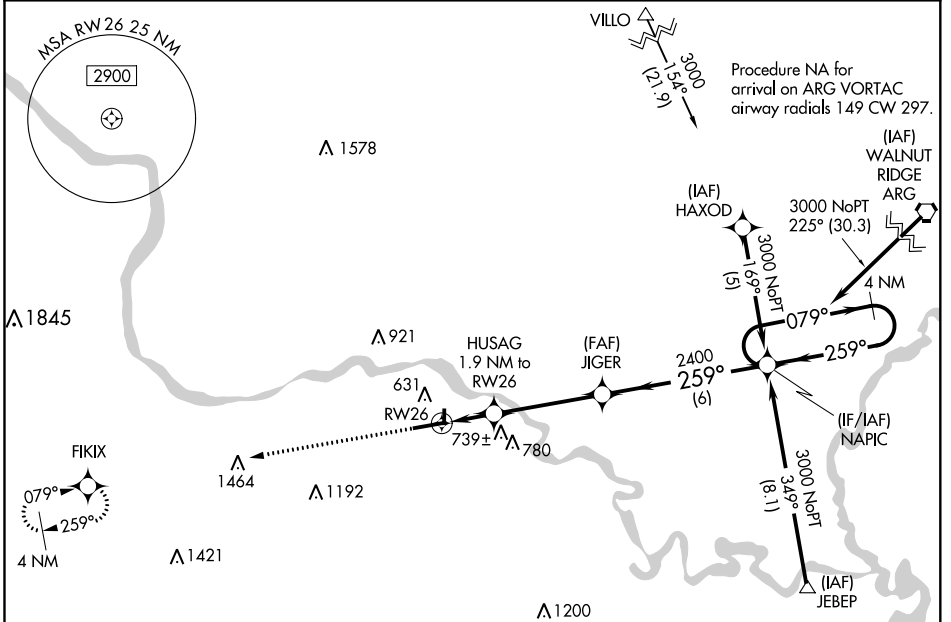
APP CRS	Rwy Idg	6002
259°	TDZE	465
	Apt Elev	465



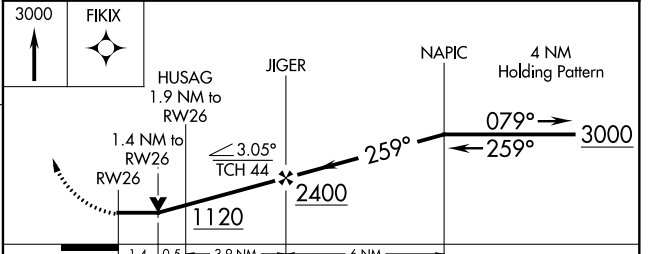
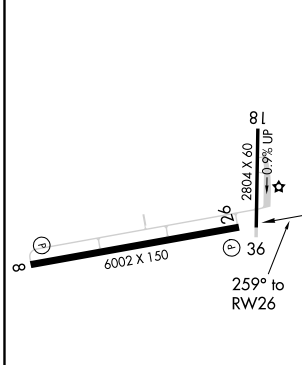
RNAV (GPS) RWY 26

BATESVILLE RGNL (BVX)

RNP APCH.		MISSED APPROACH: Climb to 3000 direct FKIX and hold.
<p>▽ Circling NA N of Rwy 8-26. ▲ Rwy 26 helicopter visibility reduction below ¾ SM NA.</p>		
AWOS-3PT 126.375	MEMPHIS CENTER 126.85 281.55	UNICOM 122.8 (CTAF) 0



ELEV 465	TDZE 465
-----------------	-----------------



CATEGORY	A	B	C	D
LNAV MDA	940-1	475 (500-1)	940-1 3/8 475 (500-1 3/8)	940-1 1/2 475 (500-1 1/2)
CIRCLING	980-1	515 (600-1)	980-1 1/2 515 (600-1 1/2)	1040-2 575 (600-2)

REIL Rwy 8 and 26 **0**
 MIRL Rwy 8-26 **0**

BATESVILLE, ARKANSAS
 Amdt 1B 03JAN19

35°44'N-91°39'W

RNAV (GPS) RWY 26

SC-1, 02 DEC 2021 to 30 DEC 2021

SC-1, 02 DEC 2021 to 30 DEC 2021

**KBVX
BATESVILLE RGNS
BATESVILLE AR
CIRC**

