

Flight Procedures Cover Page	Task Action: FLIGHT CHECK	Task Type: IAP	Estimated Chart Date: 08/07/2025	APWS Task ID: E314D8F81D94481986106FA1CA73E35B	APWS Project ID: 72F786DFB47C4228A796F27629C9606C
Procedure: RNAV (GPS) RWY 32 AMDT 1		Enroute: NO	Specialist: Hardison, Dustin		Agreement Number:
Airport ID: 0XA5			Airport City: CAMPBELLTON		State: TX
Facility ID:	Facility Type:	Flight Inspection Remark Type: Hold FC Slot			
<div>Procedure Comments:</div> <div>ACTIVE DATA USED.</div> <div>THX VOR MON - REMOVED THX IAF AND REPLACED WITH ZAMLI.</div> <div>Contact Rake McGraw AJV-A422 (405)597-8711</div> <div>05/12/2025: THIS IS AN UPDATED COPY OF THE FORM DEVELOPED ON 01/14/2025.</div> <div>1. TYPE: REMOVED DME.</div> <div>2. FIX TYPE OF ACTION: CHANGED TO MODIFY - MAKE-UP FACILITY REMOVED AND TYPE CHANGED.</div> <div>3. AIRSPACE DOCKET: ADDED 24-ASW-13.</div> <div>4. FIX MAKE-UP FACILITIES: REMOVED FAC 1 (THX) - THX VOR MON.</div> <div>5. FIX USE: ADDED T545 AND REMOVED V163.</div> <div>05/27/25: THIS IS A CORRECTED COPY OF THE FORM APPROVED ON 04/25/25.</div> <div>1. REMOVED LP MINIMUMS – FLIGHT CHECK: UNSAT PROCEDURE SURVEY RESULTS FOR LP MINIMA.</div> <div>2. MAP: REMOVED LP: RW32 – LP MINIMUMS WERE REMOVED.</div> <div>3. ADDITIONAL FLIGHT DATA: REMOVED 283906N/0982154W, 318 TREE 283936N/0982206W; 338 TREE 283909N/0982145W; WAAS CHANNEL # 93721; REFERENCE PATH ID: W32A; LTP HAE: 60.3 M - OBSTACLES WERE ASSOCIATED WITH LP FINAL AND THE PROCEDURE IS NO LONGER WAAS COMPATIBLE.</div> <div>4. FAS DATA BLOCK INFORMATION: ALL FAS DATA BLOCK INFORMATION WAS REMOVED – THE PROCEDURE IS NO LONGER WAAS COMPATIBLE.</div> <div>06/18/25: THIS IS A CORRECTED COPY OF THE FORM APPROVED ON 05/29/25.</div> <div>5. 8260-2: OZKUJ, ZAMLI, ZIVAL</div> <div>6. 1. FIX USE: TYPE FOR 0XA5 WAS CORRECTED FROM IAP TO SPECIAL IAP.</div>					

QUALITY  
21  
CHECKED

QUALITY  
9  
CHECKED  
BEGUE

<b>FIPC BASIC FORM</b>							
<b>PROCEDURE:</b> RNAV (GPS) RWY 32 AMDT 1			<b>AIRPORT NAME:</b> 74 RANCH		<b>AIRPORT ID:</b> K0XA5	<b>SPECIAL CONTROL NO:</b> OG-04-041-25	
<b>FAC ID:</b> K0XA532.01		<b>CITY:</b> CAMPBELLTON			<b>ST:</b> TX	<b>ORIG CHART DATE:</b> 06/12/2025	
<b>DFL TYPE:</b> PROC/W	<b>THIRD PARTY:</b> <input type="checkbox"/> YES	<b>EST. TIME ON SITE:</b> 0.4	<b>REIMB. NUMBER:</b> AC0721		<b>PTS TASK ID:</b> E314D8F81D94481986106FA1CA73E35B		
<b>PREFLIGHT NOTES</b>							
<b>REVIEWER:</b>					<b>DATE:</b>		
<b>COMMENTS:</b>					<b>CHECK ONE:</b>		
					<input type="checkbox"/> FLT CK REQ <input type="checkbox"/> NFCR <input type="checkbox"/> REJECT		
							<b>YES</b>
					<b>CPV COMPLETE?</b>		<b>X</b>
<b>PROCEDURE RESULTS</b>							
<b>INSPECTION DATE:</b> 04/24/2025		<b>CREW #:</b> VN583	<b>N #:</b> N84	<b>INSTRUMENT PROCEDURE STATUS:</b> <input type="checkbox"/> SAT <input checked="" type="checkbox"/> SAT W/CHANGES <input type="checkbox"/> UNSAT		<b>ARINC CODING:</b> <input checked="" type="checkbox"/> SAT <input type="checkbox"/> SAT/GOLD <input type="checkbox"/> UNSAT	
<b>FLIGHT INSPECTOR SIGNATURE:</b> hannah wiesneski @ 05/23/2025 13:17			<b>PRINTED NAME:</b> WIESNESKI, HANNAH MARION				<b>NOTAM INITIATED?</b> <input type="checkbox"/> YES <input checked="" type="checkbox"/> NO
<b>FLIGHT INSPECTOR REMARKS:</b> Special Number: OG-04-041-25 Reconfiguration inspection for new IAF at ZAMLI. K0XA5, 74 Ranch, Campbellton, TX, RNAV (GPS) RWY 32 AMDT 1. Complete/SAT with changes. UNSAT procedure survey results for LP minima. LNAV and circling mins SAT.							
<b>IN-FLIGHT OBSTACLE REPORT</b>							
<b>OBSTRUCTION ID #:</b>	<b>COORDINATES OR LOCATION:</b>		<b>GNSS ALTITUDE (MSL):</b>		<b>BAROMETRIC ALTITUDE (MSL):</b>		<b>HEIGHT ABOVE GROUND LEVEL:</b>

<b>FIPC BASIC FORM</b>							
<b>PROCEDURE:</b> RNAV (GPS) RWY 32 AMDT 1			<b>AIRPORT NAME:</b> 74 RANCH		<b>AIRPORT ID:</b> K0XA5	<b>SPECIAL CONTROL NO:</b> OG-04-041-25	
<b>FAC ID:</b> K0XA532.01		<b>CITY:</b> CAMPBELLTON			<b>ST:</b> TX	<b>ORIG CHART DATE:</b> 06/12/2025	
<b>DFL TYPE:</b> PROC/W	<b>THIRD PARTY:</b> <input type="checkbox"/> YES	<b>EST. TIME ON SITE:</b> 0.4	<b>REIMB. NUMBER:</b> AC0721		<b>PTS TASK ID:</b> E314D8F81D94481986106FA1CA73E35B		
<b>PREFLIGHT NOTES</b>							
<b>REVIEWER:</b>					<b>DATE:</b>		
<b>COMMENTS:</b>					<b>CHECK ONE:</b>		
					<input type="checkbox"/> FLT CK REQ <input type="checkbox"/> NFCR <input type="checkbox"/> REJECT		
							<b>YES</b>
					<b>CPV COMPLETE?</b>		<b>X</b>
<b>PROCEDURE RESULTS</b>							
<b>INSPECTION DATE:</b> 04/24/2025		<b>CREW #:</b> VN583	<b>N #:</b> N84	<b>INSTRUMENT PROCEDURE STATUS:</b> <input type="checkbox"/> SAT <input checked="" type="checkbox"/> SAT W/CHANGES <input type="checkbox"/> UNSAT		<b>ARINC CODING:</b> <input checked="" type="checkbox"/> SAT <input type="checkbox"/> SAT/GOLD <input type="checkbox"/> UNSAT	
<b>FLIGHT INSPECTOR SIGNATURE:</b> hannah wiesneski @ 05/19/2025 15:24			<b>PRINTED NAME:</b> WIESNESKI, HANNAH MARION				<b>NOTAM INITIATED?</b> <input type="checkbox"/> YES <input checked="" type="checkbox"/> NO
<b>FLIGHT INSPECTOR REMARKS:</b> Special Number: OG-04-041-25 Reconfiguration inspection for new IAF at ZAMLI. K0XA5, 74 Ranch, Campbellton, TX, RNAV (GPS) RWY 32 AMDT 1. Complete/SAT with UNSAT procedure survey results for LP minima.							
<b>IN-FLIGHT OBSTACLE REPORT</b>							
<b>OBSTRUCTION ID #:</b>	<b>COORDINATES OR LOCATION:</b>		<b>GNSS ALTITUDE (MSL):</b>		<b>BAROMETRIC ALTITUDE (MSL):</b>		<b>HEIGHT ABOVE GROUND LEVEL:</b>

<b>FIPC BASIC FORM</b>							
<b>PROCEDURE:</b> RNAV (GPS) RWY 32 AMDT 1			<b>AIRPORT NAME:</b> 74 RANCH		<b>AIRPORT ID:</b> K0XA5	<b>SPECIAL CONTROL NO:</b> OG-04-041-25	
<b>FAC ID:</b> K0XA532.01		<b>CITY:</b> CAMPBELLTON			<b>ST:</b> TX	<b>ORIG CHART DATE:</b> 06/12/2025	
<b>DFL TYPE:</b> PROC/W	<b>THIRD PARTY:</b> <input type="checkbox"/> YES	<b>EST. TIME ON SITE:</b> 0.4	<b>REIMB. NUMBER:</b> AC0721		<b>PTS TASK ID:</b> E314D8F81D94481986106FA1CA73E35B		
<b>PREFLIGHT NOTES</b>							
<b>REVIEWER:</b>					<b>DATE:</b>		
<b>COMMENTS:</b>					<b>CHECK ONE:</b>		
					<input type="checkbox"/> FLT CK REQ <input type="checkbox"/> NFCR <input type="checkbox"/> REJECT		
							<b>YES</b>
					<b>CPV COMPLETE?</b>		<b>X</b>
<b>PROCEDURE RESULTS</b>							
<b>INSPECTION DATE:</b> 04/24/2025		<b>CREW #:</b> VN583	<b>N #:</b> N84	<b>INSTRUMENT PROCEDURE STATUS:</b> <input checked="" type="checkbox"/> SAT <input type="checkbox"/> SAT W/CHANGES <input type="checkbox"/> UNSAT		<b>ARINC CODING:</b> <input checked="" type="checkbox"/> SAT <input type="checkbox"/> SAT/GOLD <input type="checkbox"/> UNSAT	
<b>FLIGHT INSPECTOR SIGNATURE:</b> hannah wiesneski @ 04/24/2025 19:07			<b>PRINTED NAME:</b> WIESNESKI, HANNAH MARION				<b>NOTAM INITIATED?</b> <input type="checkbox"/> YES <input checked="" type="checkbox"/> NO
<b>FLIGHT INSPECTOR REMARKS:</b> Special Number: OG-04-041-25 Reconfiguration inspection for new IAF at ZAMLI. K0XA5, 74 Ranch, Campbellton, TX, RNAV (GPS) RWY 32 AMDT 1. Complete/SAT with undetermined procedure survey results for LP minima.							
<b>IN-FLIGHT OBSTACLE REPORT</b>							
<b>OBSTRUCTION ID #:</b>	<b>COORDINATES OR LOCATION:</b>		<b>GNSS ALTITUDE (MSL):</b>		<b>BAROMETRIC ALTITUDE (MSL):</b>		<b>HEIGHT ABOVE GROUND LEVEL:</b>





ØXA5  
74 RANCH

**OLD**

11 MAY 12

Private

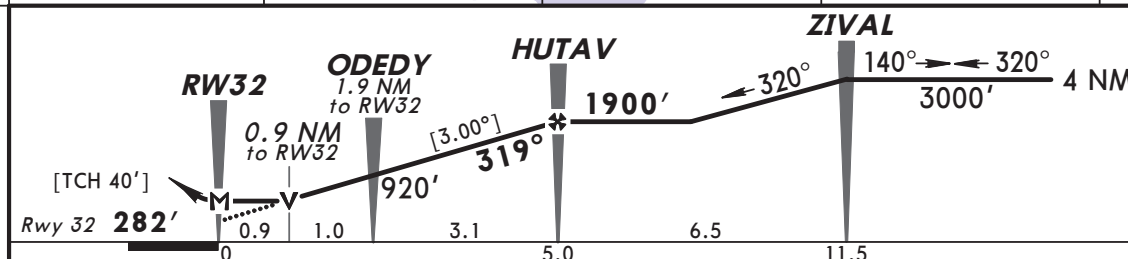
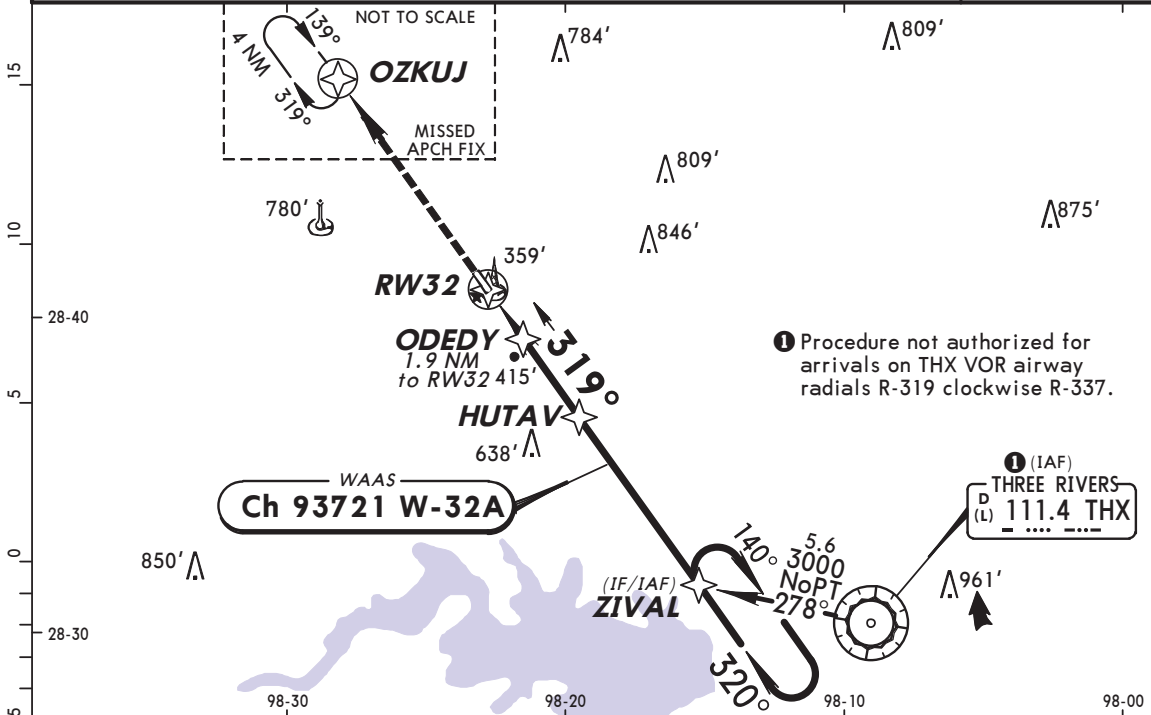
**12-2**

CAT A & B

CAMPBELLTON, TEXAS  
RNAV (GPS) Rwy 32

BRIEFING STRIP™

HOUSTON Center (R)				74 RANCH UNICOM	
134.6				CTAF 122.9	
WAAS Ch 93721 W-32A	Final Apch Crs 319°	Minimum Alt HUTAV 1900' (1618')	LP MDA(H) (CONDITIONAL) 620' (338')	Apt Elev 317' Rwy 32 282'	<div>2600'</div> <div>MSA RW32</div>
MISSED APCH: Climb to 3000' direct OZKUJ and hold.					
Alt Set: INCHES                      Trans level: FL 180                      Trans alt: 18000'					
1. Use of 74 Ranch requires permission of the owner; use of this procedure requires specific authorization by FAA Flight Standards.      2. Use local altimeter setting; if not received, use Pleasanton altimeter setting. 3. DME/DME RNP-0.30 not authorized. 4. Pilot controlled lighting 122.9.					



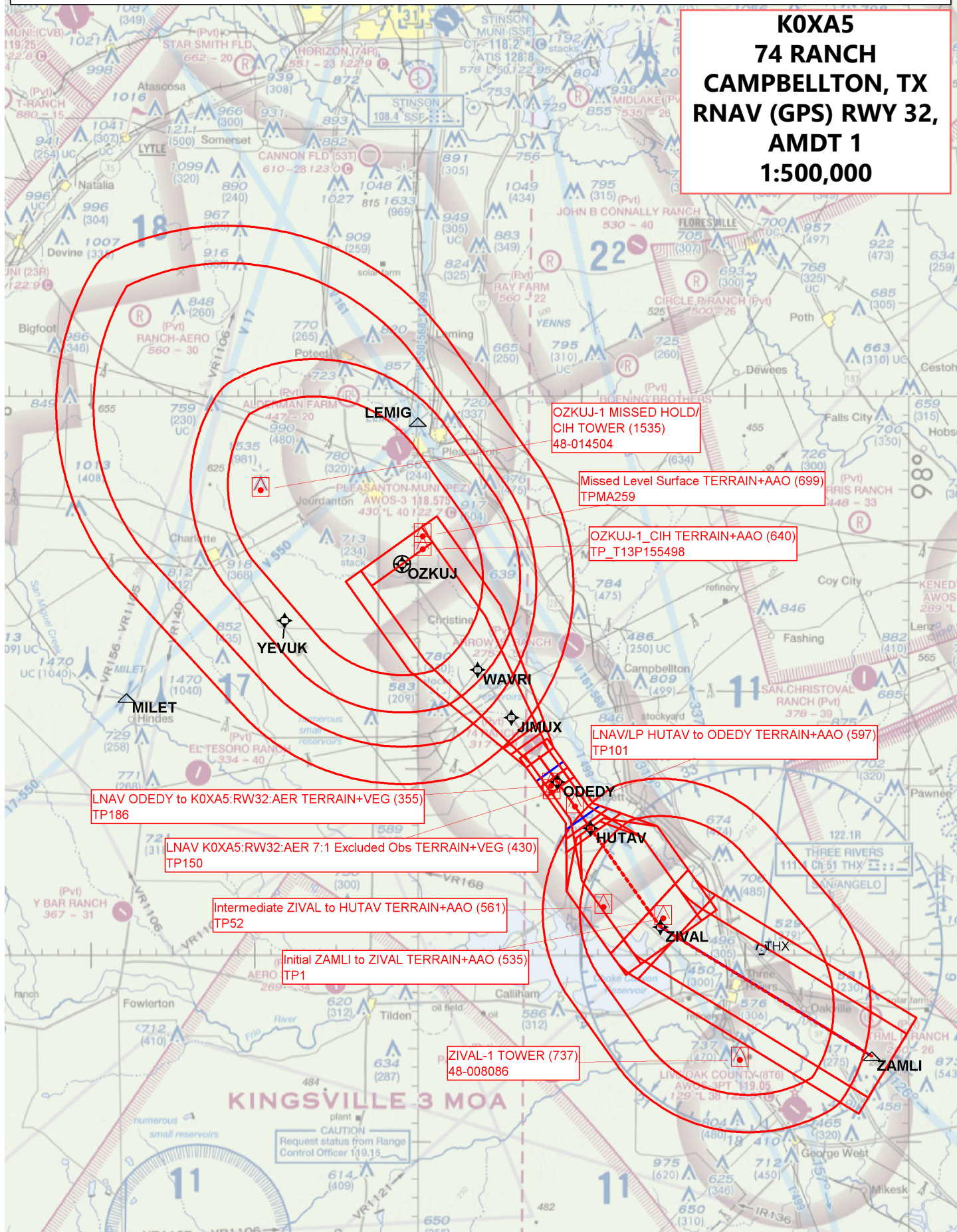
Gnd speed-Kts	70	90	100	120	140	160						
Descent angle [3.00°]	372	478	531	637	743	849						
MAP at RW32												

TERPS						STRAIGHT-IN LANDING RWY 32		CIRCLE-TO-LAND	
						With Local Altimeter Setting		With Local Altimeter Setting	
						LP	LNAV	Max Kts	MDA(H)
						MDA(H) 620' (338')	MDA(H) 620' (338')	90	700' (383')-1
						1	1	120	780' (463')-1
						NA	NA	C	NA
						D	D	D	D
						With Pleasanton Altimeter Setting		With Pleasanton Altimeter Setting	
						LP	LNAV	Max Kts	MDA(H)
						MDA(H) 680' (398')	MDA(H) 680' (398')	90	760' (443')-1
						1	1	120	840' (523')-1
						NA	NA	C	NA
						D	D	D	D

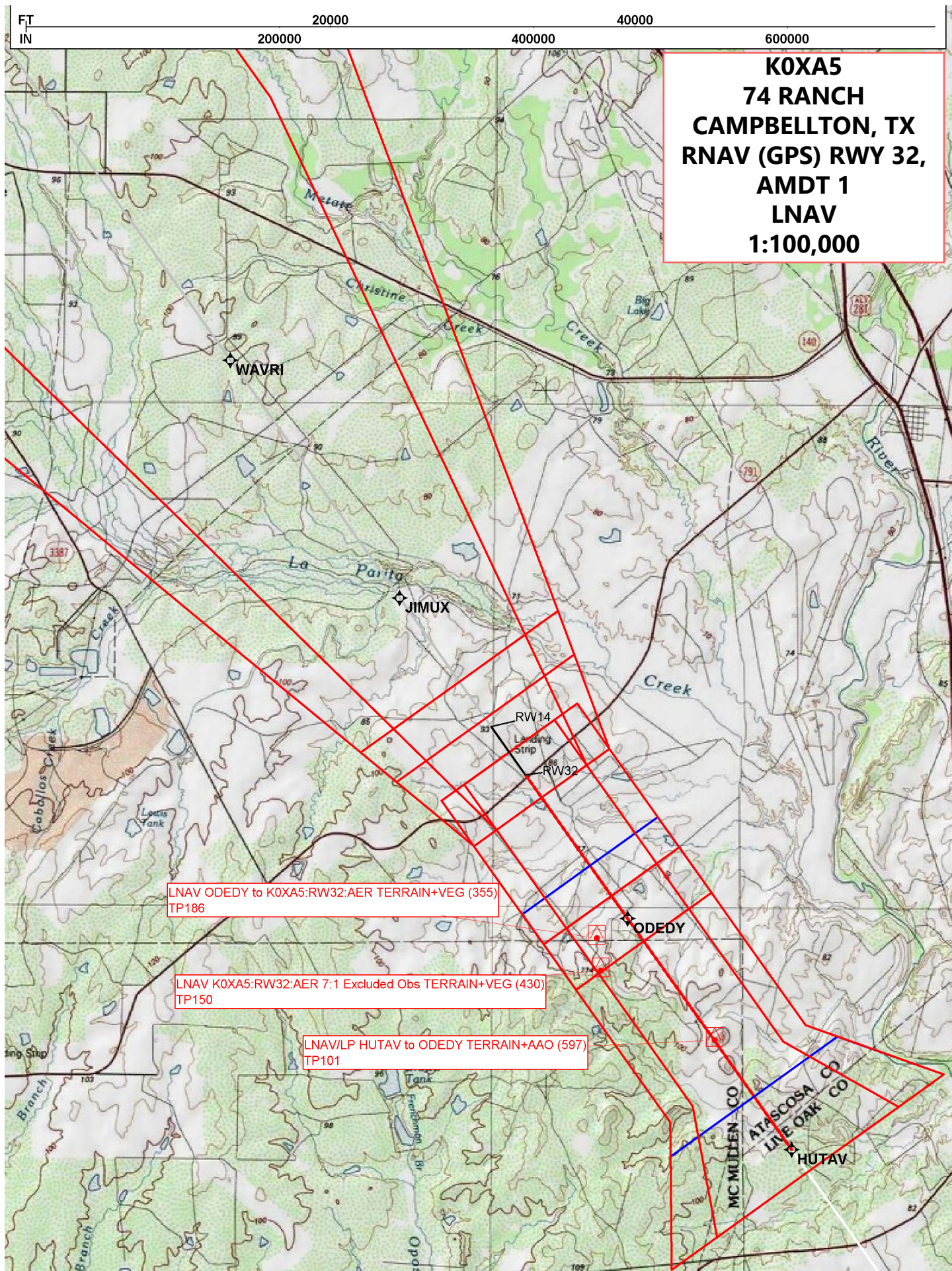
CHANGES: New procedure.

© JEPPESEN, 2012. ALL RIGHTS RESERVED.

**K0XA5  
74 RANCH  
CAMPBELLTON, TX  
RNAV (GPS) RWY 32,  
AMDT 1  
1:500,000**









FT IN 20000 40000 60000  
20000 40000 60000

**K0XA5**  
**74 RANCH**  
**CAMPBELLTON, TX**  
**RNAV (GPS) RWY 32,**  
**AMDT 1**  
**CIRCLING**  
**1:100,000**

