

Flight Procedures Cover Page	Task Action: FLIGHT CHECK	Task Type: SID	Estimated Chart Date: 02/20/2025	APWS Task ID: E533411FD1EF4B809F8CBBDC4A8749C3	APWS Project ID: BC646D56664F457C8AB86BF6F357B61E
Procedure: LINSE TWO DEPARTURE (RNAV)		Enroute: YES	Specialist: Bristow, Travis		Agreement Number:
Airport ID: KBWI			Airport City: BALTIMORE		State: MD
Facility ID:	Facility Type:	Flight Inspection Remark Type: New FC Slot			

Procedure Comments:
ACTIVE DATA USED FOR KBWI.

CHANGED COURSE HEADING FOR EN ROUTE MCRAY TRANSITION: BUFFR TO MCRAY FROM 291.31 TO 302.31. TRUE COURSE HEADING WAS PUBLISHED INSTEAD OF MAGNETIC COURSE.

CANCEL T-NOTAM 4/7937 FOR THE COURSE HEADING CHANGE UPON PUBLICATION.

CONTACT JOHN BORDY: AJV-A33, 405-954-0980

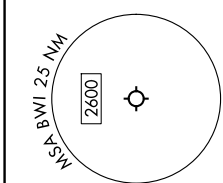


(LINSE2.LINSE) FIG

LINSE TWO DEPARTURE (RNAV)

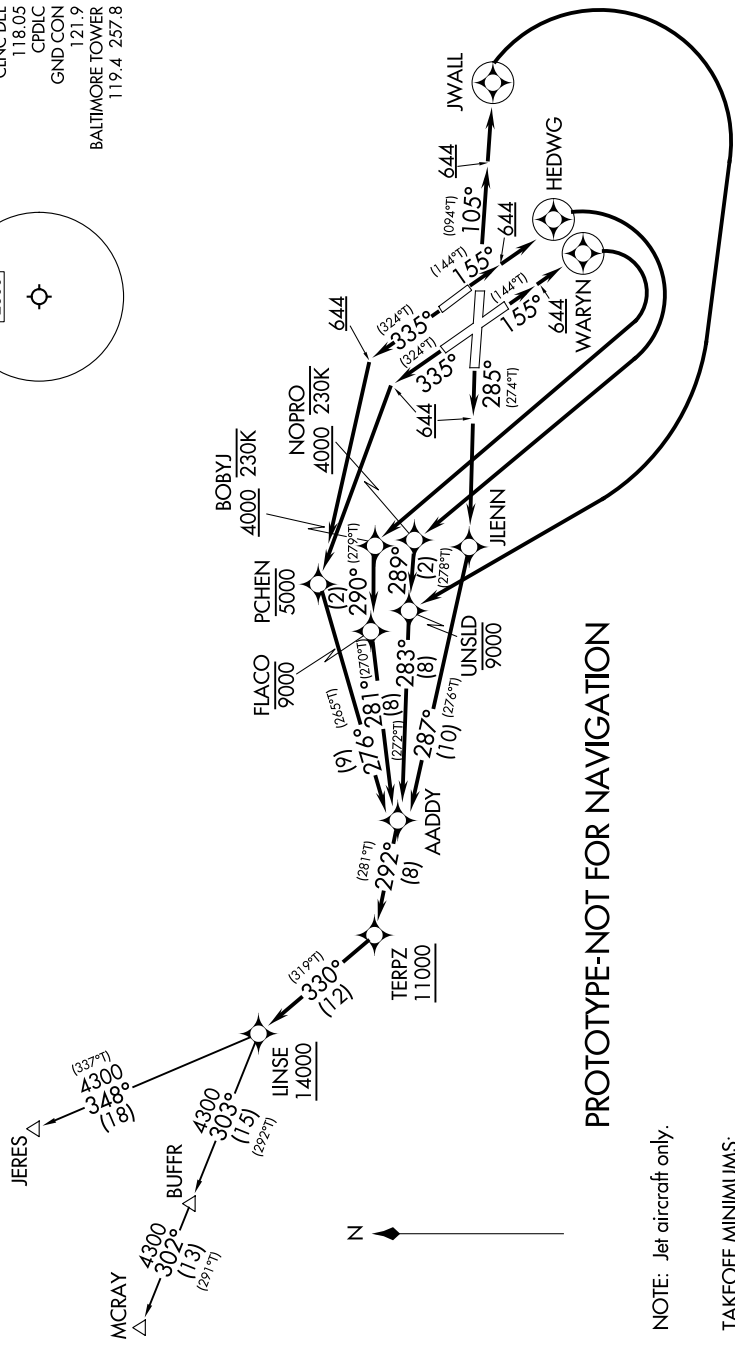
BALTIMORE/
WASHINGTON INTL THURGOOD MARSHALL (BWI)
AL-804 (FAA) BALTIMORE, MARYLAND

POTOMAC DEP CON
128.7 307.9
D-AIIS
115.1 127.8
CLINC DEL
118.05
CPDLC
GND CON
121.9
BALTIMORE TOWER
119.4 257.8



RNAV 1 - DME/DME/IRU or GPS.
RADAR required.

TOP ALTITUDE:
16000



PROTOTYPE-NOT FOR NAVIGATION

NOTE: Jet aircraft only.

TAKEOFF MINIMUMS:
Rwy 15R: Standard with minimum climb of 780'/NM to 644.
Rwys 10, 15L, 28, 33L/R: Standard with minimum climb of 500'/NM to 644.

(CONTINUED ON FOLLOWING PAGE)

NOTE: Chart not to scale.

(LINSE2.LINSE) FIG
LINSE TWO DEPARTURE (RNAV)

BALTIMORE/
WASHINGTON INTL THURGOOD MARSHALL (BWI)
BALTIMORE, MARYLAND

DEPARTURE ROUTE DESCRIPTION

TAKEOFF RUNWAY 10: Climb on heading 105° to 644, then direct JWALL, then right turn direct UNSLD at or below 9000, then on track 283° to AADDY, then on track 292° to cross TERPZ at or above 11000, thence

TAKEOFF RUNWAY 15L: Climb on heading 155° to 644, then direct HEDWG, then right turn direct NOPRO at or above 4000 and at or below 230K, then on track 289° to cross UNSLD at or below 9000, then on track 283° to AADDY, then on track 292° to cross TERPZ at or above 11000, thence

TAKEOFF RUNWAY 15R: Climb on heading 155° to 644, then direct WARYN, then right turn direct BOBYJ at or above 4000 at or below 230K, then on track 290° to cross FLACO at or below 9000, then on track 281° to AADDY, then on track 292° to cross TERPZ at or above 11000, thence

TAKEOFF RUNWAY 28: Climb on heading 285° to 644, then direct JLENN, then on track 287° to AADDY, then on track 292° to cross TERPZ at or above 11000, thence

TAKEOFF RUNWAYS 33L/R: Climb on heading 335° to 644, then left turn direct PCHEN at or below 5000, then on track 276° to AADDY, then on track 292° to cross TERPZ at or above 11000, thence

. . . . then on track 330° to cross LINSE at or above 14000. Then on assigned transition. Maintain 16000, expect filed altitude 10 minutes after departure.

ALL AIRCRAFT ATC CLIMB GRADIENT: If unable to accept climb rate advice ATC prior to taxi. Rwy 15R: 780'/NM until 644' MSL.

JERES TRANSITION (LINSE2.JERES)

MCRAV TRANSITION (LINSE2.MCRAV)

PROTOTYPE-NOT FOR NAVIGATION

(LINSE1 .LINSE) 24193

LINSE ONE DEPARTURE (RNAV)

BALTIMORE/
WASHINGTON INTL THURGOOD MARSHALL (BWI)
AL-804 (FAA) BALTIMORE, MARYLAND

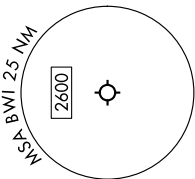
NE-3, 11 JUL 2024 to 08 AUG 2024

RNAV 1 - DME/DME/IRU or GPS.
RADAR required.

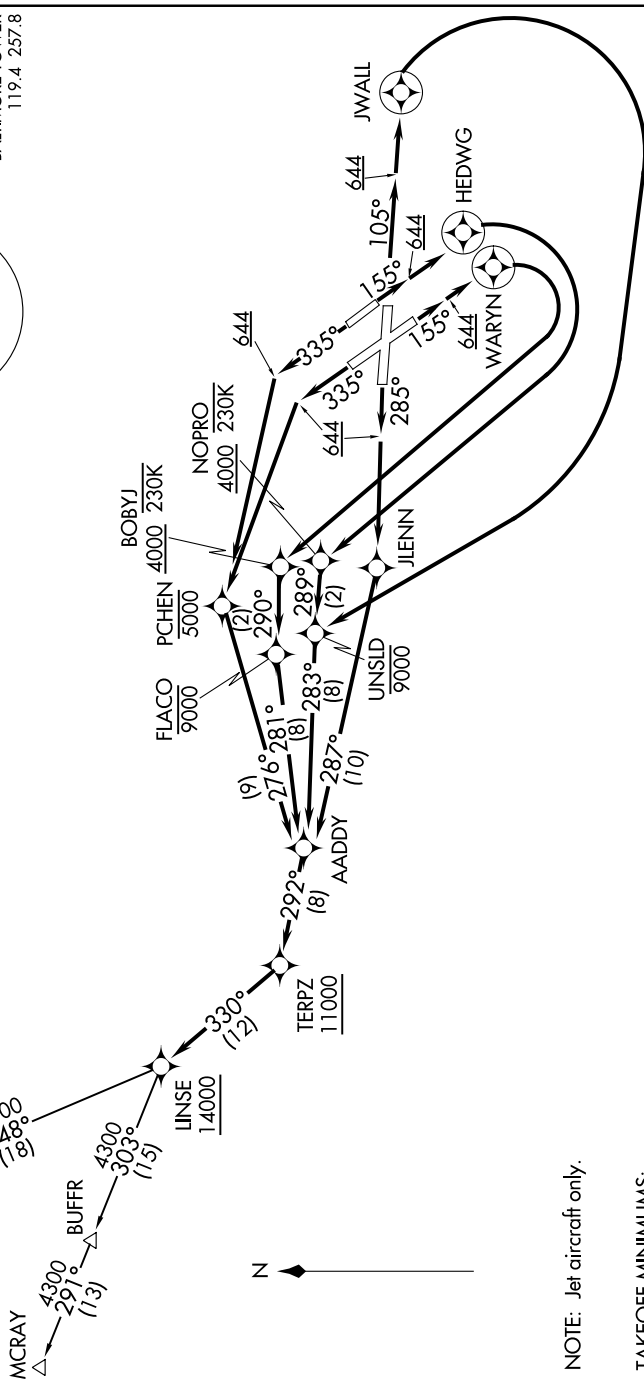
TOP ALTITUDE:
16000

LINSE ONE DEPARTURE (RNAV)
(LINSE1 .LINSE) 11JUL24

POTOMAC DEP CON 128.7 307.9
D-ATIS 115.1 127.8
CLNC DEL 118.05
CPDIC 121.9
GND CON 119.4 257.8
BALTIMORE TOWER



OLD



NOTE: Jet aircraft only.

TAKEOFF MINIMUMS:

Rwy 15R: Standard with minimum climb of 780'/NM to 644.
Rwys 10, 15L, 28, 33L/R: Standard with minimum climb of 500'/NM to 644.

(CONTINUED ON FOLLOWING PAGE)

NOTE: Chart not to scale.

NE-3, 11 JUL 2024 to 08 AUG 2024

BALTIMORE/
WASHINGTON INTL THURGOOD MARSHALL (BWI)
BALTIMORE, MARYLAND

KBWI
BALTIMORE/WASHINGTON INTL
THURGOOD MARSHALL
BALTIMORE, MD
LINSE TWO (RNAV) SID
1:500,000

