

Flight Procedures Cover Page	Task Action: P-NOTAM	Task Type: IAP	Estimated Chart Date: 09/03/2026	APWS Task ID: E5588C507523426BB36BC61BE49EBCA3	APWS Project ID: 90076120D07041398861FF2CF84D47F0
Procedure: RNAV (RNP) Z RWY 33L AMDT 4A		Enroute: NO	Specialist: Smith, Bryant		Agreement Number:
Airport ID: KBWI			Airport City: BALTIMORE		State: MD
Facility ID:	Facility Type:	Flight Inspection Remark Type:			

Procedure Comments:

P-NOTAM adds Simultaneous Approach note to IAP.

PROCESSED IAW TECHNICAL SUPPOSRT GROUP (AJF-17) MEMO DATED 07/07/2021, SUBJECT: GUIDANCE FOR PROCEDURAL CHANGES REQUIRING FLIGHT INSPECTION/VALIDATION

CONTACT: ROB HAMILTON A433 MANAGER, 405-954-4608



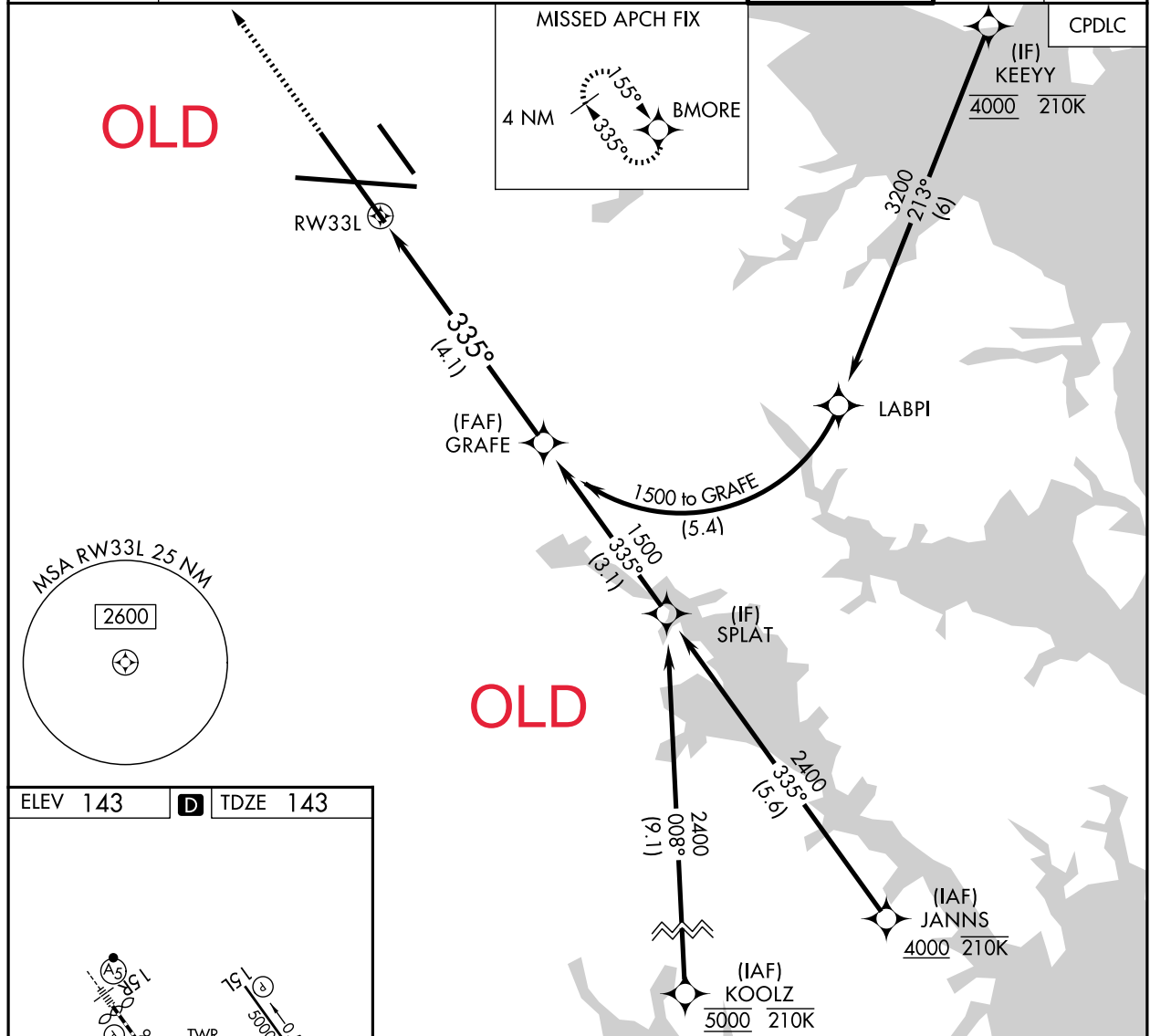
APP CRS	Rwy Ldg	8301
335°	TDZE	143
	Apt Elev	143

RNAV (RNP) Z RWY 33L

BALTIMORE/WASHINGTON INTL THURGOOD MARSHALL (BWI)

RNP APCH - GPS. From KEEYY: RF.	MALSR	MISSED APPROACH: Climb to 3000 direct BMORE and hold.
<p>▼ For uncompensated Baro-VNAV systems, procedure NA below -11°C or above 54°C. For inop ALS, increase RNP 0.30 all Cats visibility to RVR 5500.</p>		

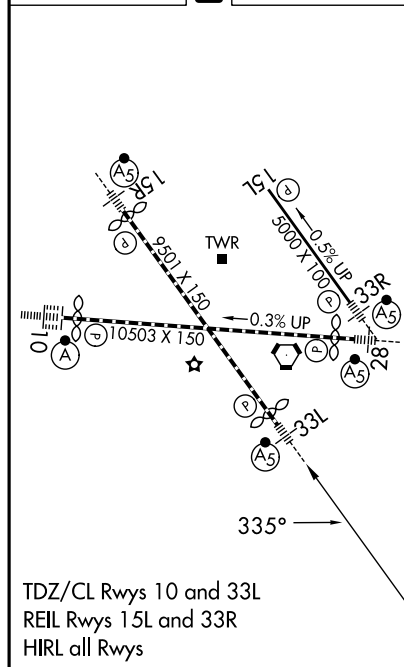
D-ATIS	POTOMAC APP CON	BALTIMORE TOWER	GND CON	CLNC DEL
115.1 127.8	119.0 282.275 (020°-100°) 119.7 290.475 (131°-180°)	119.4 257.8	121.9	118.05
	124.55 317.425 (101°-130°) 128.7 307.9 (181°-019°)			



NE-3, 19 FEB 2026 to 19 MAR 2026

NE-3, 19 FEB 2026 to 19 MAR 2026

ELEV 143	D TDZE 143
----------	-------------------



3000	BMORE	See planview for multiple IF locations. VGSI and RNAV glidepath not coincident (VGSI Angle 3.00/TCH 72).	GRAFE	
			1500	
			GP 3.00° TCH 55	
			4.1 NM	
CATEGORY	A	B	C	D
RNP 0.30 DA	496/30 353 (400-5%)			
AUTHORIZATION REQUIRED				