

Flight Procedures Cover Page	Task Action: Cancellation	Task Type: IAP	Estimated Chart Date: 02/20/2025	APWS Task ID: E5BF8ACB037F4CC6B08D0306A57E37FA	APWS Project ID: 92C3D24603D14E2780670B46F9A91FDA
Procedure: COPTER RNAV (GPS) 210 AMDT 1		Enroute: NO	Specialist: Hanby, William		Agreement Number:
Airport ID: ME52			Airport City: MACHIAS		State: ME
Facility ID:	Facility Type:	Flight Inspection Remark Type:			

Procedure Comments:
SPECIAL PINS PROCEDURE.
COPTER RNAV (GPS) 210, AMDT 1 CANCELLED AND REPLACED BY COPTER RNAV (GPS) M 206, ORIG.
PER 8260.46J WAIVER, ALL DEPARTURE INFORMATION/MINIMUMS ARE LISTED ON THE 8260-15B.
CONTACT AJV-A432 MANAGER, JOSEPH L. ZEDER 405-954-9111.



CANCEL

MACHIAS, MAINE

AL-11271 (FAA)

19059

COPTER RNAV (GPS) 210°

DOWN EAST COMMUNITY HOSPITAL (ME52)

APP CRS 210°	Rwy Idg Surf Elev Apt Elev	N/A 320 150
------------------------	----------------------------------	--

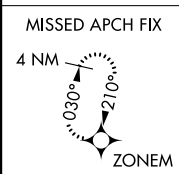
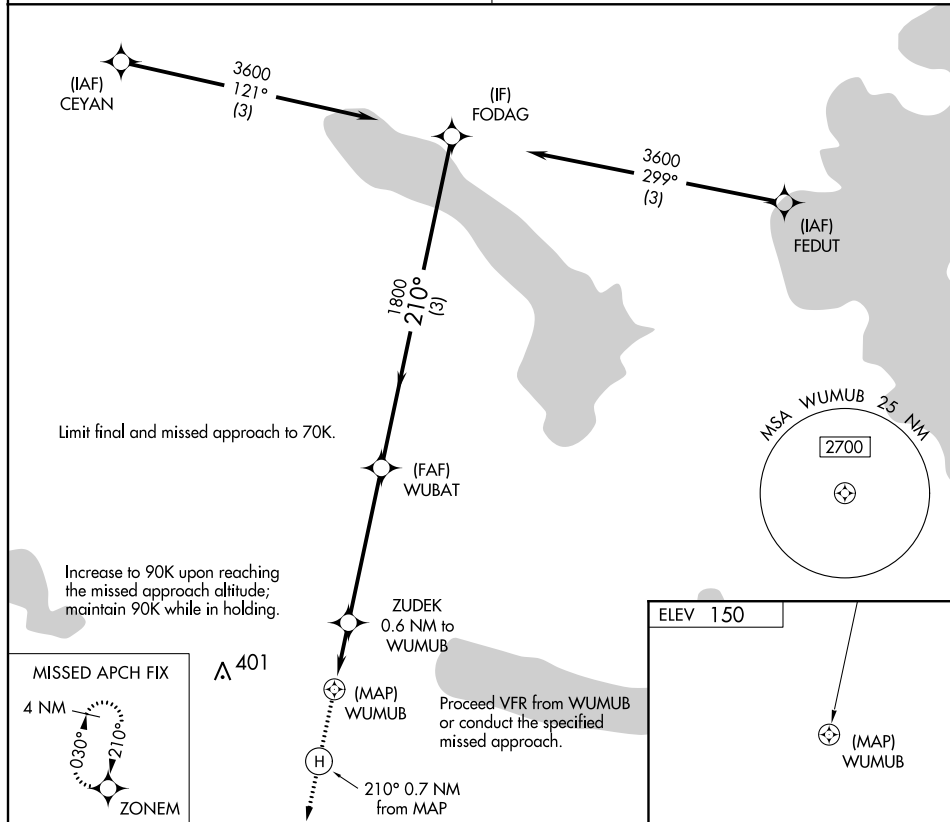
RNP APCH.

▲ NA Use of Down East Community Hospital requires permission of the owner; use of this procedure requires specific authorization by FAA Flight Standards. Use Machias Valley altimeter setting; when not received, use Bar Harbor altimeter setting and increase MDA 140 feet. Lights controlled by photocell or prior arrangement.

MISSED APPROACH: Climb to 4000 direct ZONEM and hold, continue climb-in-hold.

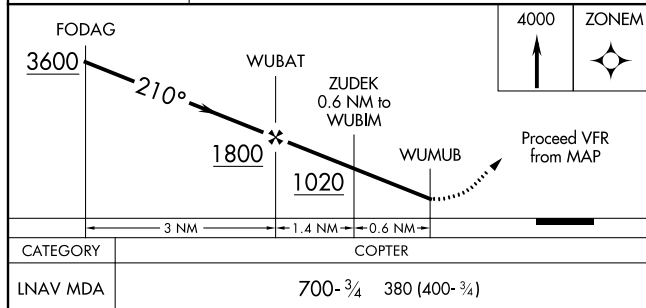
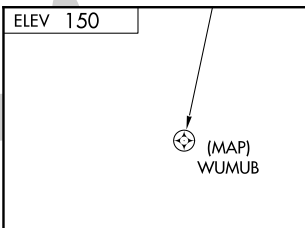
MACHIAS VALLEY AWOS-3
122.8

BOSTON CENTER
120.25 346.4



▲ 401

Proceed VFR from WUMUB or conduct the specified missed approach.



CATEGORY	COPTER	
LNAV MDA	700- ³ / ₄	380 (400- ³ / ₄)

MACHIAS, MAINE
Amdt 1 28FEB19

44°43'N-067°29'W

DOWN EAST COMMUNITY HOSPITAL (ME52)
COPTER RNAV (GPS) 210°

CANCEL