

Flight Procedures Cover Page	Task Action: Amendment	Task Type: SID	Estimated Chart Date: 07/16/2020	APWS Task ID: E5C6A5D6ADDF421D828F822A021243D9	APWS Project ID: DFAE3322670C4B328345E83E3238E496
Procedure: SID AKUNA (RNAV) EIGHT DALLAS TX KDFW		Enroute: YES	Specialist: Byrns, Tommy		Agreement Number:
Airport ID: KDFW	Airport Name: DALLAS-FORT WORTH INTL		Airport City: DALLAS-FORT WORTH		State: TX
Facility ID:	Facility Type:	Flight Inspection Remark Type:			
<p>Procedure Comments: MCL VOR MON.</p> <p>RECOMMENDED NAVAID FOR CF LEGS: PGO VORTAC.</p> <p>PROCESSED IAW AIRCRAFT OPERATIONS GROUP (AJW-33) MEMO, OCTOBER 3, 2018, SUBJECT: FLIGHT INSPECTION NOT REQUIRED.</p> <p>CONTACT: ALLAN WILL, 405-954-6103.</p> <p>05/01/20: THIS IS A CORRECTED COPY OF THE FORM APPROVED ON 04/13/2020.</p> <p>1. REMOVED NOTE: MC ALESTER TRANSITION: FOR AIRCRAFT OVERFLYING MLC DME OR INTERCEPTING J105.</p>					

APPROVED
By Steven M Barnett at 2:25 pm, May 01, 2020

QUALITY
23
CHECKED

OLD

(AKUNA7.AKUNA) 18088

AL-6039 (FAA)

DALLAS-FORT WORTH INTL (DFW)

AKUNA SEVEN DEPARTURE (RNAV)

DALLAS-FORT WORTH, TEXAS

TOP ALTITUDE:

RWYS 31L/31R: 5000

RWYS 17C/17R/18L/18R/

35L/35C/36L/36R: 10000

D- ATIS DEP 135.925

CLNC DEL 128.25

CPDLC

GND CON

121.65 121.8 (EAST)

121.85 (WEST)

DFW TOWER

126.55 127.5 (EAST)

124.15 134.9 (WEST)

REGIONAL DEP CON

118.55 290.35 (RWY 17R/C)

126.47 363.15 (RWY 18L/R)

125.12 353.95 (RWYS 35L/C and 36L/R)

NOTE: MC ALESTER TRANSITION: For aircraft overflying MLC VORTAC or intercepting J105.

NOTE: DME/DME/IRU or GPS required.

NOTE: RNAV 1.

NOTE: For use by turbojet aircraft only.

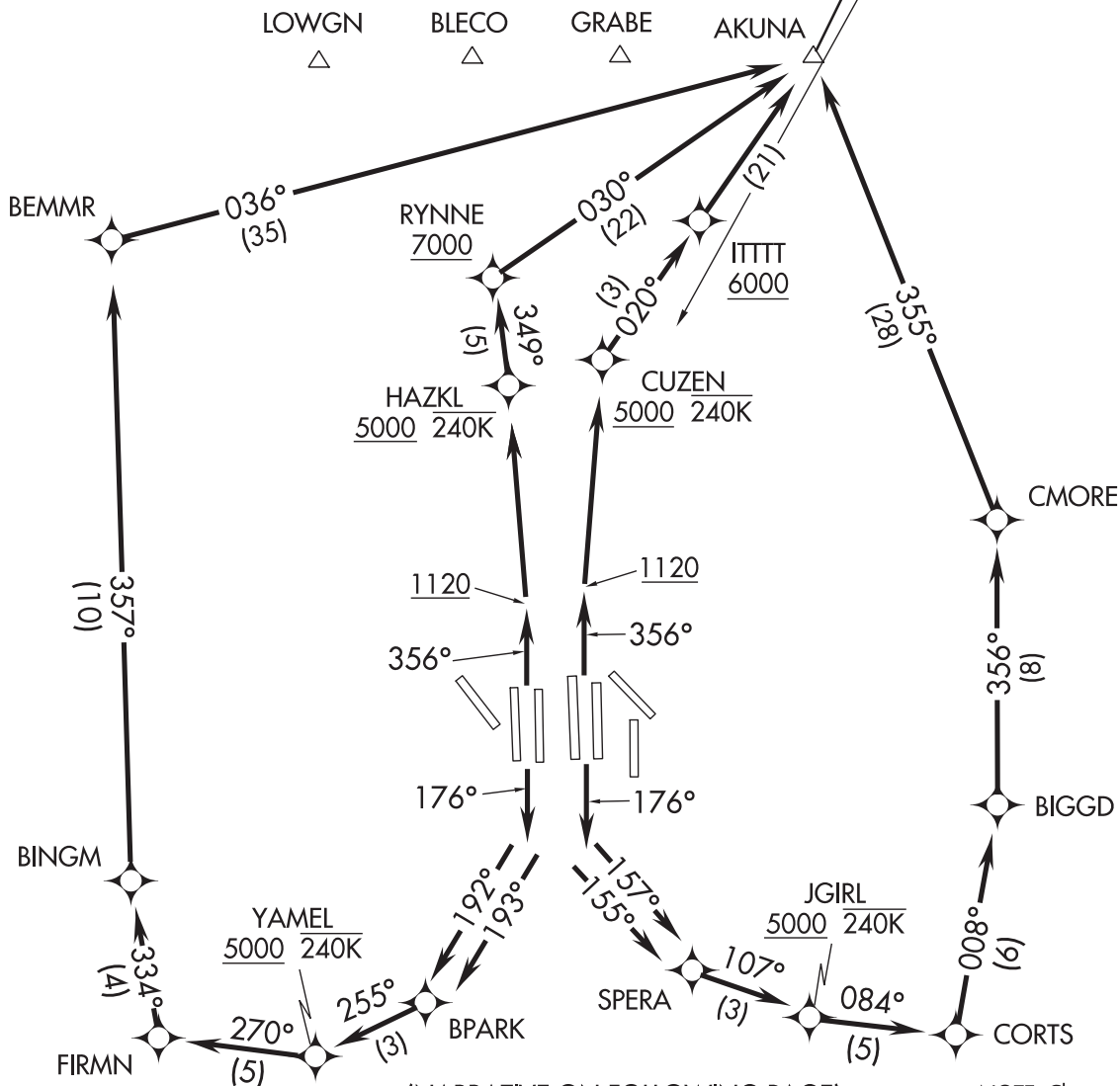
NOTE: Props file and expect JACKY or TRI-GATE departure.

NOTE: RADAR required.

TAKEOFF MINIMUMS

Rwys 31L/R: Standard.

Rwys 17C/R, 18L/R, 35C/L, 36L/R: Standard with minimum climb of 500' per NM to 1120.



SC-2, 30 JAN 2020 to 27 FEB 2020

SC-2, 30 JAN 2020 to 27 FEB 2020

AKUNA SEVEN DEPARTURE (RNAV)

(AKUNA7.AKUNA) 29MAR18

DALLAS-FORT WORTH, TEXAS
DALLAS-FORT WORTH INTL (DFW)

AKUNA SEVEN DEPARTURE (RNAV)



DEPARTURE ROUTE DESCRIPTION

TAKEOFF RWY 17C: Climb heading 176° to intercept course 157° to SPERA, then on track 107° to cross JGIRL at or above 5000 and at or below 240K, then on depicted route to AKUNA, thence. . . .

TAKEOFF RWY 17R: Climb heading 176° to intercept course 155° to SPERA, then on track 107° to cross JGIRL at or above 5000 and at or below 240K, then on depicted route to AKUNA, thence. . . .

TAKEOFF RWY 18L: Climb heading 176° to intercept course 193° to BPARK, then on track 255° to cross YAMEL at or above 5000 and at or below 240K, then on depicted route to AKUNA, thence. . . .

TAKEOFF RWY 18R: Climb heading 176° to intercept course 192° to BPARK, then on track 255° to cross YAMEL at or above 5000 and at or below 240K, then on depicted route to AKUNA, thence. . . .

TAKEOFF RWYS 35L/C: Climb heading 356° to 1120, then direct CUZEN, cross CUZEN at or above 5000 and at or below 240K, then on track 020° to cross ITTT at or above 6000, then on depicted route to AKUNA, thence. . . .

TAKEOFF RWYS 36L/R: Climb heading 356° to 1120, then direct HAZKL, cross HAZKL at or above 5000 and at or below 240K, then on track 349° to cross RYNNE at or above 7000, then on depicted route to AKUNA, thence. . . .

. . . .on (transition) maintain 10000. Expect filed altitude ten minutes after departure.

TAKEOFF RWYS 31L/R: Climb heading assigned by ATC, expect RADAR vectors to AKUNA, thence. . . .

. . . .on (transition) maintain 5000. Expect filed altitude ten minutes after departure.

MC ALESTER TRANSITION (AKUNA7.MLC)

SC-2, 30 JAN 2020 to 27 FEB 2020

SC-2, 30 JAN 2020 to 27 FEB 2020