

|                                 |                              |                                |                                     |   |  |
|---------------------------------|------------------------------|--------------------------------|-------------------------------------|---|--|
| Flight Procedures Cover Page    | Task Action:<br>Cancellation | Task Type:<br>IAP              | Estimated Chart Date:<br>05/14/2026 | APWS Task ID:<br>E65427213C08404D83599C0F7C07B6A7 | APWS Project ID:<br>4956D98F43584E7D90AD05C698A457BE |
| Procedure:<br>VOR RWY 8 AMDT 8B |                              | Enroute:<br>NO                 | Specialist:<br>Bruno, John          |   | Agreement Number:                                    |
| Airport ID:<br>05C              |                              |                                | Airport City:<br>GRIFFITH           |   | State:<br>IN   |
| Facility ID:                    | Facility Type:               | Flight Inspection Remark Type: |                                     |   |  |

Procedure Comments:  
 CANCELLATION OF PROCEDURE.  
 THIS CANCELS FDC 6/8354.  
 Contact Casimir Tabaka 405-202-7857.



GRIFFITH, INDIANA

AL-5431 (FAA)

25163

|  |                        |  |
|--|------------------------|--|
| VORTAC CGT<br><b>114.2</b><br>Chan <b>89</b> | APP CRS<br><b>084°</b> | Rwy Ldg<br>TDZE<br>Apt Elev<br><b>4899</b><br><b>634</b><br><b>634</b> |
|--|------------------------|--|

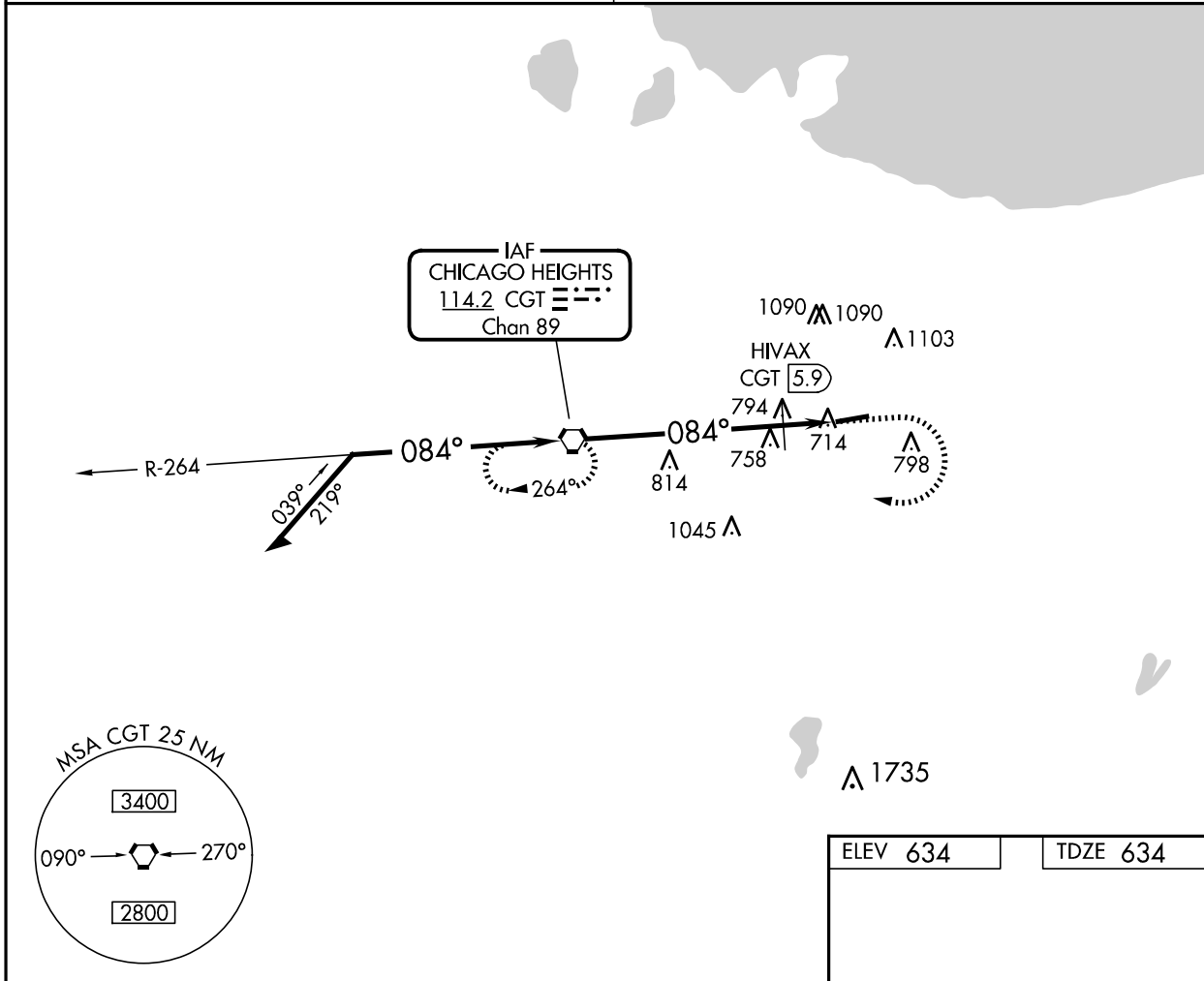
# VOR RWY 8

GRIFFITH-MERRILLVILLE (Ø5C)

**▽** Obtain local altimeter setting on CTAF; when not received, use Chicago Midway Intl altimeter setting and increase all MDAs 60 feet. Visibility reduction by helicopters NA. Procedure NA at night.

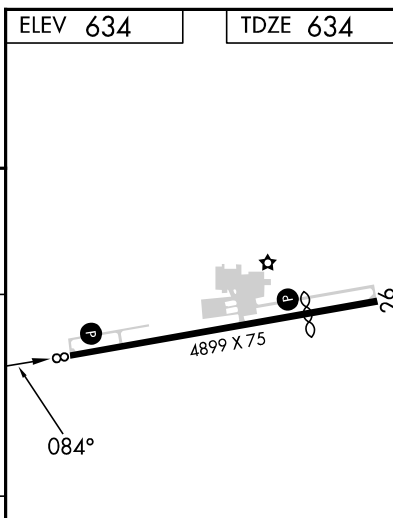
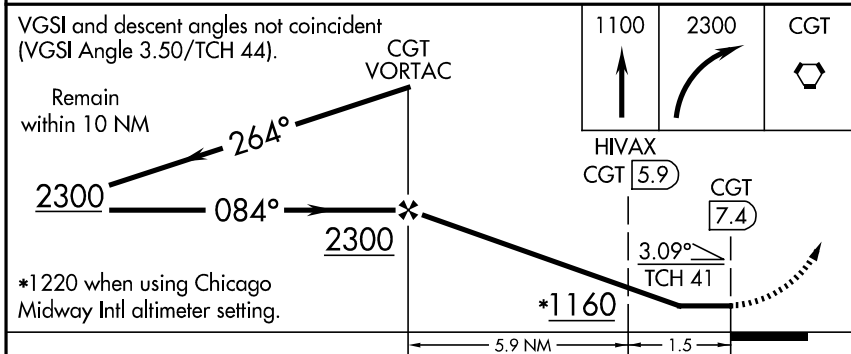
**MISSSED APPROACH:** Climb to 1100 then climbing right turn to 2300 direct CGT VORTAC and hold.

|                                       |                                 |
|---------------------------------------|---------------------------------|
| CHICAGO APP CON<br><b>133.1 285.6</b> | UNICOM<br><b>123.0 (CTAF) 0</b> |
|---------------------------------------|---------------------------------|



EC-2, 02 OCT 2025 to 30 OCT 2025

EC-2, 02 OCT 2025 to 30 OCT 2025



| CATEGORY           | A      | B           | C | D  |
|--------------------|--------|-------------|---|----|
| S-8                | 1160-1 | 526 (600-1) |   | NA |
| CIRCLING           | 1200-1 | 566 (600-1) |   | NA |
| HIVAX FIX MINIMUMS |        |             |   |    |
| S-8                | 1060-1 | 426 (500-1) |   | NA |
| CIRCLING           | 1200-1 | 566 (600-1) |   | NA |

|                   |      |      |      |      |      |
|-------------------|------|------|------|------|------|
| FAF to MAP 7.4 NM |      |      |      |      |      |
| Knots             | 60   | 90   | 120  | 150  | 180  |
| Min:Sec           | 7:24 | 4:56 | 3:42 | 2:58 | 2:28 |

GRIFFITH, INDIANA  
Amdt 8B 24MAY18

41°31'N-87°24'W

GRIFFITH-MERRILLVILLE (Ø5C)  
**VOR RWY 8**