

Flight Procedures Cover Page	Task Action: FLIGHT CHECK	Task Type: IAP	Estimated Chart Date: 06/12/2025	APWS Task ID: E6CC1E2790E44EFEBD5646E869459461	APWS Project ID: 11A0125DF5FF4B208F21D3F000C588B8
Procedure: RNAV (GPS) RWY 13 AMDT 1		Enroute: NO	Specialist: Suppes, Jill		Agreement Number:
Airport ID: KSBM			Airport City: SHEBOYGAN		State: WI
Facility ID:	Facility Type:	Flight Inspection Remark Type: New FC Slot			
<div>Procedure Comments:</div> <div>UTILIZED ACTIVE DATA FOR KSBM AIRPORT AND RUNWAY.</div> <div>CLEARs NOTAM FDC 4/4994; NEW CIRCLING CAT B AND C CONTROLLING OBSTACLES.</div> <div>APPROVAL LETTER: ON REQUEST FOR VDA MORE THAN 0.20 DEGREES GREATER THAN THE VGSI ANGLE; 8260.3F PARA 2-6-2.A.</div> <div>CONTACT ROBERT HAMILTON: AJV-A433, 405-954-4608.</div> <div><div>8260-2 LEWKO</div><div>4/30/2025: THIS IS A CORRECTED COPY OF THE FORM APPROVED ON 3/27/2025.</div><div>1. AMENDED FAC 2 TYPE FROM "VOR/DME" TO "VORTAC".</div><div>2. AMENDED HOLDING PAT 1 & 2 TYPR FROM "VOR/DME" TO "VORTAC".</div><div><div>QUALITY 16 CHECKED</div><div><div>QUALITY 41 CHECKED</div><div>QUALITY 34 CHECKED</div></div></div></div>					

FIPC BASIC FORM						
PROCEDURE: RNAV (GPS) RWY 13 AMDT 1			AIRPORT NAME: SHEBOYGAN COUNTY MEML INTL		AIRPORT ID: KSBM	SPECIAL CONTROL NO: BG-03-184-25
FAC ID: KSBM13.01		CITY: SHEBOYGAN			ST: WI	ORIG CHART DATE: 06/12/2025
DFL TYPE: PROC/G	THIRD PARTY: <input type="checkbox"/> YES	EST. TIME ON SITE: 0.5	REIMB. NUMBER:	PTS TASK ID: E6CC1E2790E44EFEBD5646E869459461		
PREFLIGHT NOTES						
REVIEWER: scott wiebe					DATE: 03/25/2025	
COMMENTS:					CHECK ONE:	
					<input checked="" type="checkbox"/> FLT CK REQ <input type="checkbox"/> NFCR <input type="checkbox"/> REJECT	
					<div style="display: flex; justify-content: space-between;"> YES NO </div>	
					CPV COMPLETE?	
					X	
PROCEDURE RESULTS						
INSPECTION DATE: 03/25/2025	CREW #: VN219	N #: N83	INSTRUMENT PROCEDURE STATUS: <input checked="" type="checkbox"/> SAT <input type="checkbox"/> SAT W/CHANGES <input type="checkbox"/> UNSAT		ARINC CODING: <input checked="" type="checkbox"/> SAT <input type="checkbox"/> SAT/GOLD <input type="checkbox"/> UNSAT	
FLIGHT INSPECTOR SIGNATURE: scott wiebe @ 03/25/2025 17:24			PRINTED NAME: WIEBE, GREGORY SCOTT			NOTAM INITIATED? <input type="checkbox"/> YES <input checked="" type="checkbox"/> NO
FLIGHT INSPECTOR REMARKS:						
IN-FLIGHT OBSTACLE REPORT						
OBSTRUCTION ID #:	COORDINATES OR LOCATION:	GNSS ALTITUDE (MSL):	BAROMETRIC ALTITUDE (MSL):	HEIGHT ABOVE GROUND LEVEL:		



Federal Aviation Administration

Memorandum

To: Bruce DeCleene, Manager, Flight Technologies and Procedures
Division THRU: Doug Rodzon, Acting Manager Flight Procedure
Implementation and Oversight Branch

From: Lonnie Everhart, Manager, Instrument Flight Procedures (IFP)
Coordination Team, AJV-5400

Subject: Approval Request: SHEBOYGAN COUNTY MEML INTL,
SHEBOYGAN, WI, (KSBM) RNAV (GPS) RWY 13

FAAO 8260.3F, para 2-6-2. Glidepath Angle (GPA) and Vertical Descent Angle (VDA). Flight Standards approval is required to establish a VDA (of a procedure where the FAC is straight-in aligned) that is more than 0.20 degrees greater than the angle of a VGSI installed to the same runway.

Runway 13 at SHEBOYGAN COUNTY MEML INTL, SHEBOYGAN, WI, (KSBM) has a commissioned VGSI angle/TCH of 3.00/33.6. Flight inspection of the current published procedure determined that a VDA/TCH must not be specified on the chart due to visual segment obstacles. IAW 8260.3F, para 2-6-4.a.(2) a redesign must be attempted utilizing the highest allowable VDA within 8260.3F table 2-6-1. Redesign was accomplished utilizing VDA/TCH 3.50/40. The 20:1 visual surface is clear. Request approval to publish VDA/TCH of 3.50/40.

When a flight inspection/validation has determined that a VDA/TCH must not be specified on the chart, a redesign must be attempted per Order 8260.3, paragraph 2-6-4.a.(2). If the highest VDA is still unacceptable, then place a note in the profile view of the chart; use "Chart profile note: Visual Segment – Obstacles."

Failure to approve this waiver would cause a safety of flight publishing "Chart profile note: Visual Segment – Obstacles"

Funding to physically change the GPA/VGSI is not available currently. Due to the lack of funding, there currently is no timeline to rectify the non-coincident condition. Request approval to publish a 3.50 VDA.

APP CRS	Rwy Idg	5002
131°	TDZE	755
	Apt Elev	755

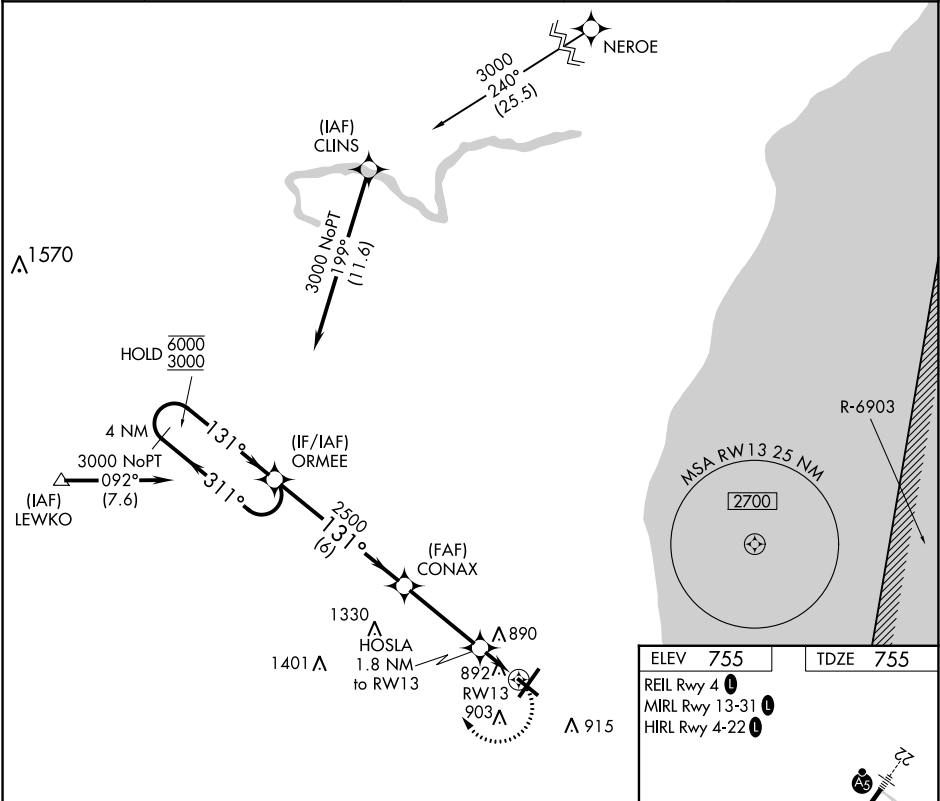
OLD

RNAV (GPS) RWY 13

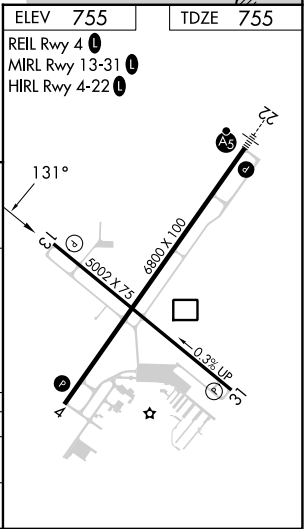
SHEBOYGAN COUNTY MEML INTL (SBM)

RNP APCH.	MISSED APPROACH: Climbing right turn to 3000 direct ORMEE and hold.
Rwy 13 helicopter visibility reduction below ¾ SM NA.	

ASOS 118.425	MILWAUKEE APP CON 127.375 263.075	GCO 121.725	CLNC DEL 127.375	UNICOM 122.7 (CTAF) 0
-----------------	--------------------------------------	----------------	---------------------	--------------------------



4 NM Holding Pattern		Visual Segment - Obstacles.		3000	ORMEE
ORMEE		CONAX	HOSLA 1.8 NM to RW13	1.2 NM to RW13	RW13
6000 3000		2500	1360	0.6 NM	1.2 NM
6 NM		3.5 NM	0.6 NM	1.2 NM	
CATEGORY	A	B	C	D	
LNVA MDA	1160-1	405 (500-1)	1160-1¼	405 (500-1¼)	
CIRCLING	1200-1 445 (500-1)	1220-1 465 (500-1)	1240-1½ 485 (500-1½)	1360-2 605 (700-2)	



AIRPORT ID: KSBM
AIRPORT NAME: SHEBOYGAN COUNTY MEML INTL
CITY/STATE: SHEBOYGAN/WISCONSIN
PROC ID: RNAV (GPS) RWY 13 AMDT: 1
SCALE: 1:500,000

The figure is a detailed aeronautical chart of Sheboygan County, Wisconsin, centered on Sheboygan County Memorial International Airport (KSBM). The chart displays various airports, navigation aids, and terrain features. Key locations include Winnebago Lake, Fond Du Lac, and Sheboygan. Several red boxes highlight specific areas of interest:

- Initial CLINS to ORMEE TOWER (1280) 55-000627
- Initial LEWKO to ORMEE WINDMILL (1419) 55-020270
- ORMEE MA Holding/HILO WINDMILL (1387) 55-020280
- Intermediate ORMEE to CONAX AAO (1250)
- Missed Level Surface Tower (1441) 55-000988
- LNAV HOSLA 7:1 Excluded Obs Tower (1217) 55-001450
- LNAV CONAX to HOSLA AAO (1149)
- LNAV HOSLA to KSBM:RW13:AER TREE (901)

The chart also includes labels for various airports like Oshkosh, Appleton, and Manitowish, as well as navigation aids like VORTAC and DME.

AIRPORT ID: KSBM
AIRPORT NAME: SHEBOYGAN COUNTY
MEML INTL
CITY/STATE: SHEBOYGAN/WISCONSIN
PROC ID: RNAV (GPS) RWY 13 AMDT: 1
SCALE: 1:100,000
LNAV, MISSED, CIRCLING

