

Flight Procedures Cover Page	Task Action: FLIGHT CHECK	Task Type: Textual DP	Estimated Chart Date: 07/11/2024	APWS Task ID: E8A0885980B6430B8878FD7ECBE06024	APWS Project ID: D3D66D0591714E13B45ED3083BFF50F3
Procedure: TAKEOFF MINIMUMS AND OBSTACLE DP AMDT 2		Enroute: NO	Specialist: Bruce, Richard		Agreement Number:
Airport ID: 1VA1			Airport City: STUART		State: VA
Facility ID:	Facility Type:	Flight Inspection Remark Type: New FC Slot			
<div>Procedure Comments:</div> <div>APPROVAL LETTER: RWY 26 TAKEOFF MINIMUMS: PUBLISH CEILING/VISIBILITY ONLY. ACTIVE DATA USED FOR 1VA1</div> <div>AIRPORT AND RUNWAYS.</div> <div>CONTACT JOHN BORDY, AJV-A33, (405) 954-0980.</div> <div><div>QUALITY 42 CHECKED</div><div>Digitally signed by SEAN BARBEE Sep 06, 2023</div></div>					



Federal Aviation Administration

Memorandum

Date: 5/22/2024

To: Manager, Flight Procedure Standards

From: John Bordy
Manager, Training Team, AJV-A33

Subject: **ACTION:** Approval Request

Takeoff Minimums and Obstacle Departure Procedure (ODP) Rwy 26, Micro, Stuart, VA (1VA1).

Calculated climb gradient exceeds 500 feet per NM, 8260.46J, paragraph 2-1-1.d.(2). Request approval to publish ceiling/visibility only.

The RWY 26 departure computed climb gradient is 153,668 feet per NM to an altitude 336 feet above airport elevation. The obstacle driving this climb gradient is a 3139' MSL tree 9 feet from departure end of runway and has an accuracy code of 2C. A total of 16 trees up to 3259' MSL extending out to 1998 feet from departure end of runway require climb gradients of 1058 feet per NM or more to an altitude 336 feet above airport elevation.

Due to the distance of the trees from the runway, a departure route to avoid the obstacles can't be constructed.

Request approval to publish takeoff minimums only, equivalent to ceiling/visibility of 400-1 3/4. The ceiling and visibility would enable pilots to see and avoid any terrain and trees which require an excessive climb gradient within 2 SM of the end of the runway.

Attachments

U.S. DEPARTMENT OF TRANSPORTATION – FEDERAL AVIATION ADMINISTRATION
TAKEOFF MINIMUMS AND OBSTACLE DEPARTURE PROCEDURES (ODP)

Bearings, headings, courses, tracks and radials are magnetic. Elevation and altitudes are in feet MSL. Altitudes are minimum altitudes unless otherwise indicated.
Ceilings are in feet above airport elevation. Distances are in nautical miles. Visibilities are in statute miles or feet RVR unless otherwise indicated.

City, State	Airport	Effective Date	Amdt. No.
STUART, VA	MICRO	SPECIAL	1

TAKEOFF MINIMUMS:

RWY 8, 400 – 1 ½ OR STANDARD WITH MINIMUM CLIMB OF 470 FT PER NM TO 3400.

RWY 26, 400 – 2 ¾ OR STANDARD WITH MINIMUM CLIMB OF 360 FT PER NM TO 3500.

TEXTUAL DEPARTURE PROCEDURES:

RWY 8 – CLIMB HEADING 077.70 TO 3800 BEFORE TURNING LEFT.

RWY 26 – CLIMB HEADING 257.71 TO 3900 BEFORE TURNING.

TAKEOFF OBSTACLE NOTES:

NOTE: RWY 8, TREES BEGINNING 258 FT FROM DER, 554 FT RIGHT OF CENTERLINE, UP TO 100 FT AGL/3239 FT MSL. TERRAIN BEGINNING 5054 FT FROM DER, 59 FT RIGHT OF CENTERLINE, UP TO 3110 FT MSL. TREES BEGINNING 57 FT FROM DER, 349 FT LEFT OF CENTERLINE, UP TO 100 FT AGL/3156 FT MSL. TERRAIN BEGINNING 3486 FT FROM DER 976 FT LEFT OF CENTERLINE UP TO 3034 FT MSL.

NOTE: RWY 26, TREES BEGINNING 307 FT FROM DER, 323 FT LEFT OF CENTERLINE, UP TO 100 FT AGL/3339 FT MSL. TERRAIN BEGINNING 110 FT FROM DER, 8 FT LEFT OF CENTERLINE UP TO 3104 FT MSL. TERRAIN BEGINNING 151 FT FROM DER, 127 FT RIGHT OF CENTERLINE, UP TO 3100 FT MSL.

CONTROLLING OBSTACLES:

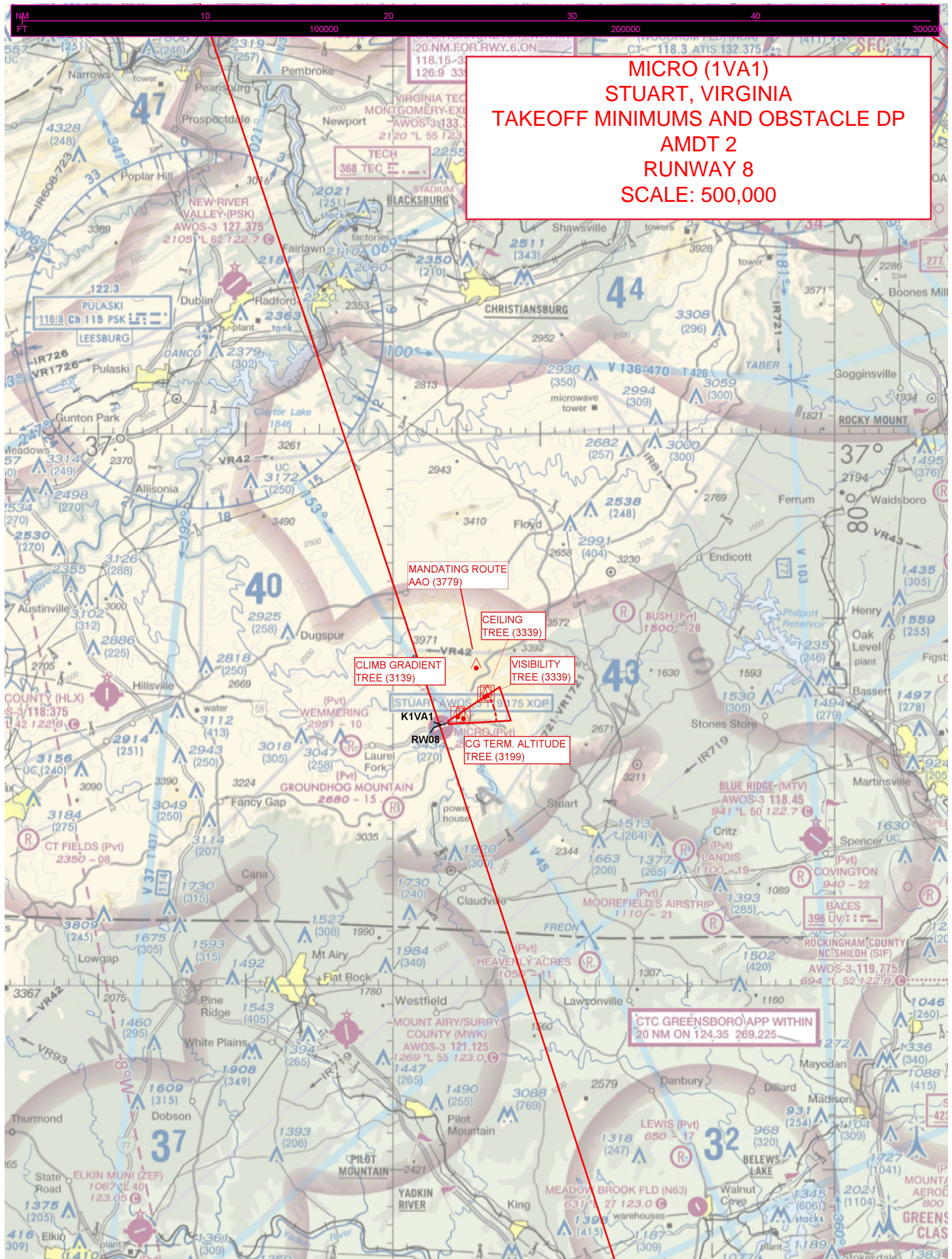
RWY 8: 3156 FT MSL TREE 364441.22N/0802534.24W

RWY 26: 3339 FT MSL TREE 364330.30N/0802848.01W

OBSTACLES MANDATING ODP ROUTE DEVELOPMENT: RWY 8 – 3774 FT AAO 364715.00N/0802424.00W. RWY 26 – 4171 FT MSL AAO 364741.70N/0802831.10W.

OLD

QUALITY
9
CHECKED



**MICRO (1VA1)
STUART, VIRGINIA
TAKEOFF MINIMUMS AND OBSTACLE DP
AMDT 2
RUNWAY 8
SCALE: 500,000**

MANDATING ROUTE
AAO (3779)

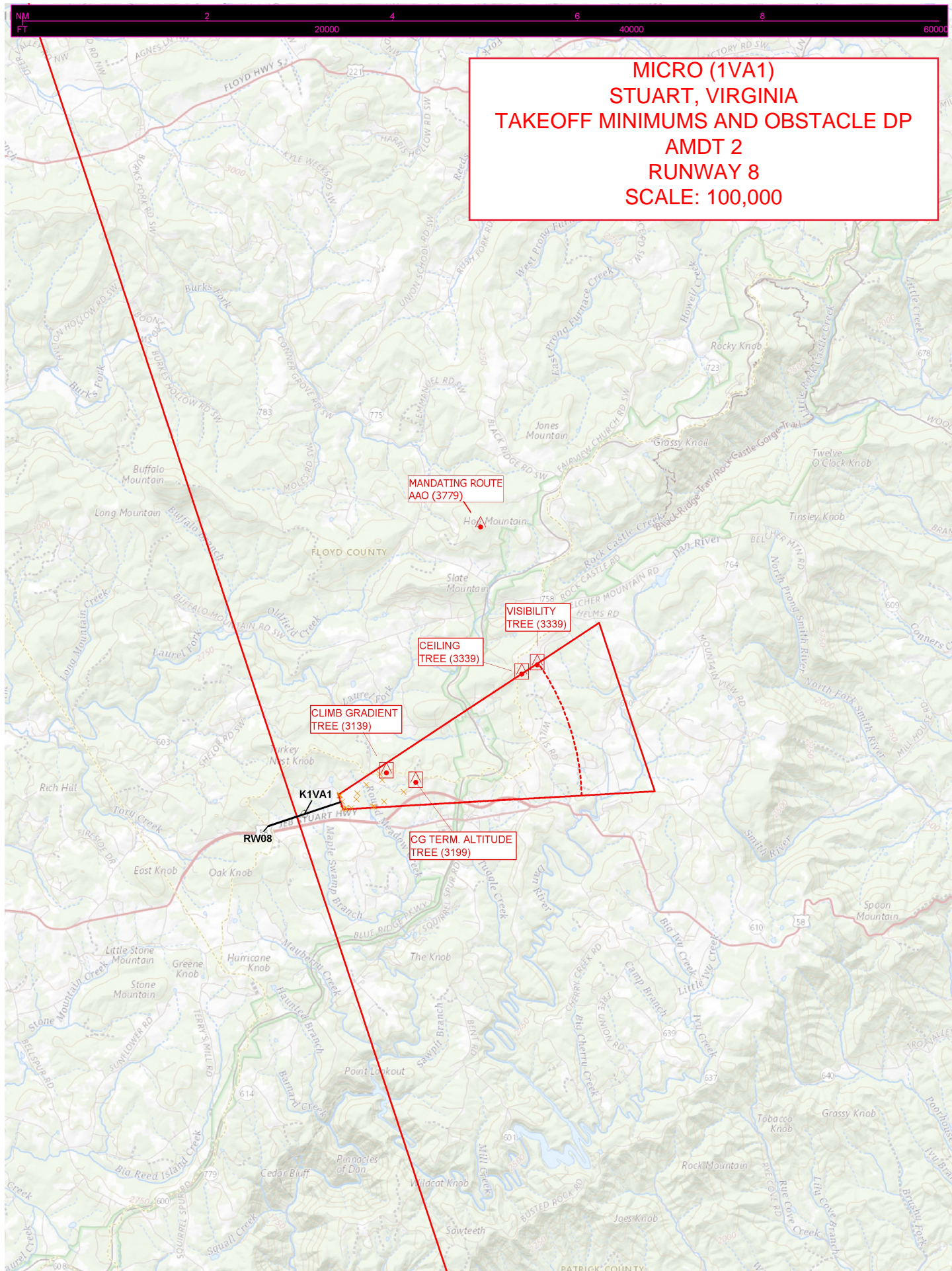
CEILING
TREE (3339)

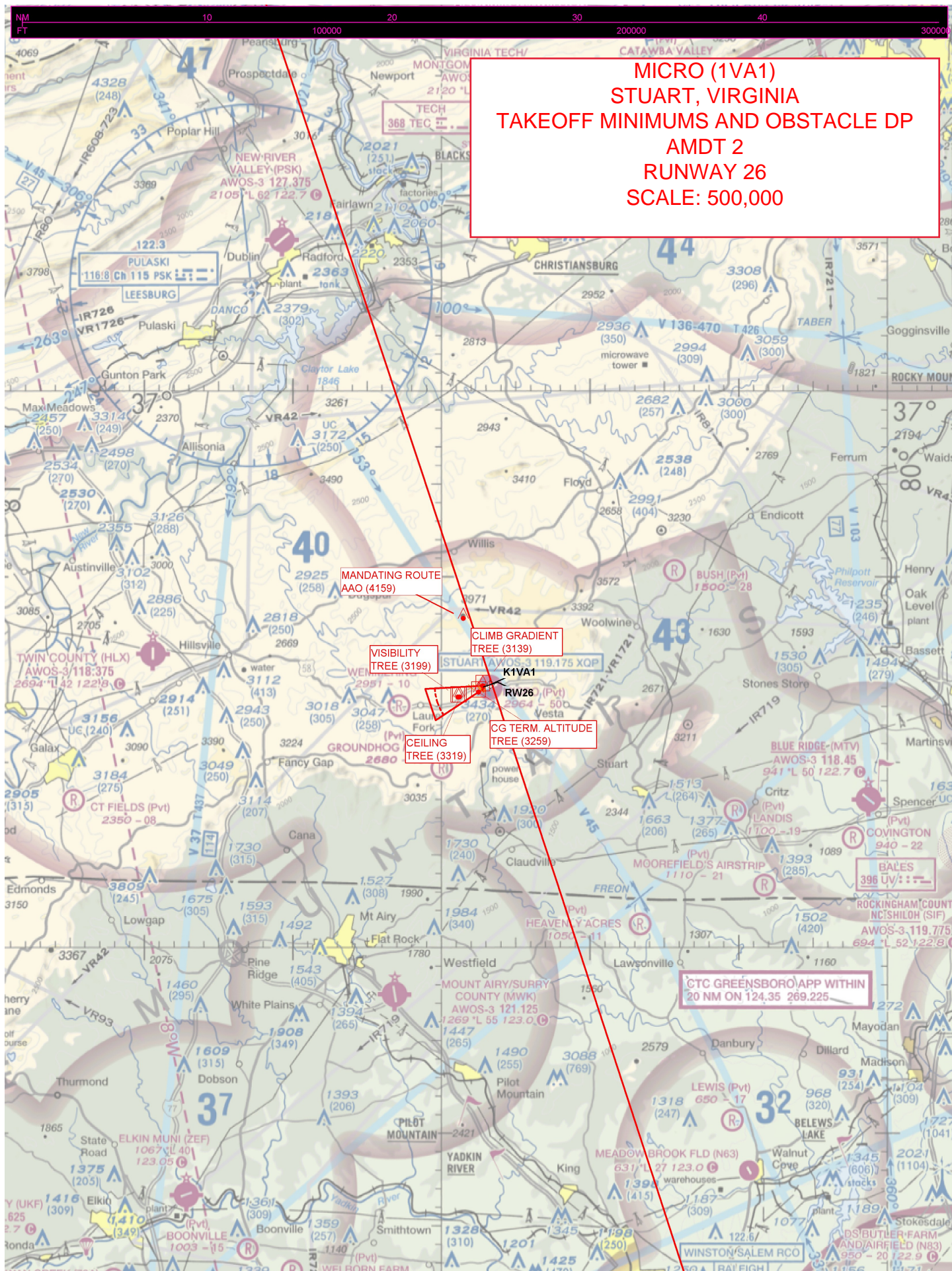
VISIBILITY
TREE (3339)

CLIMB GRADIENT
TREE (3139)

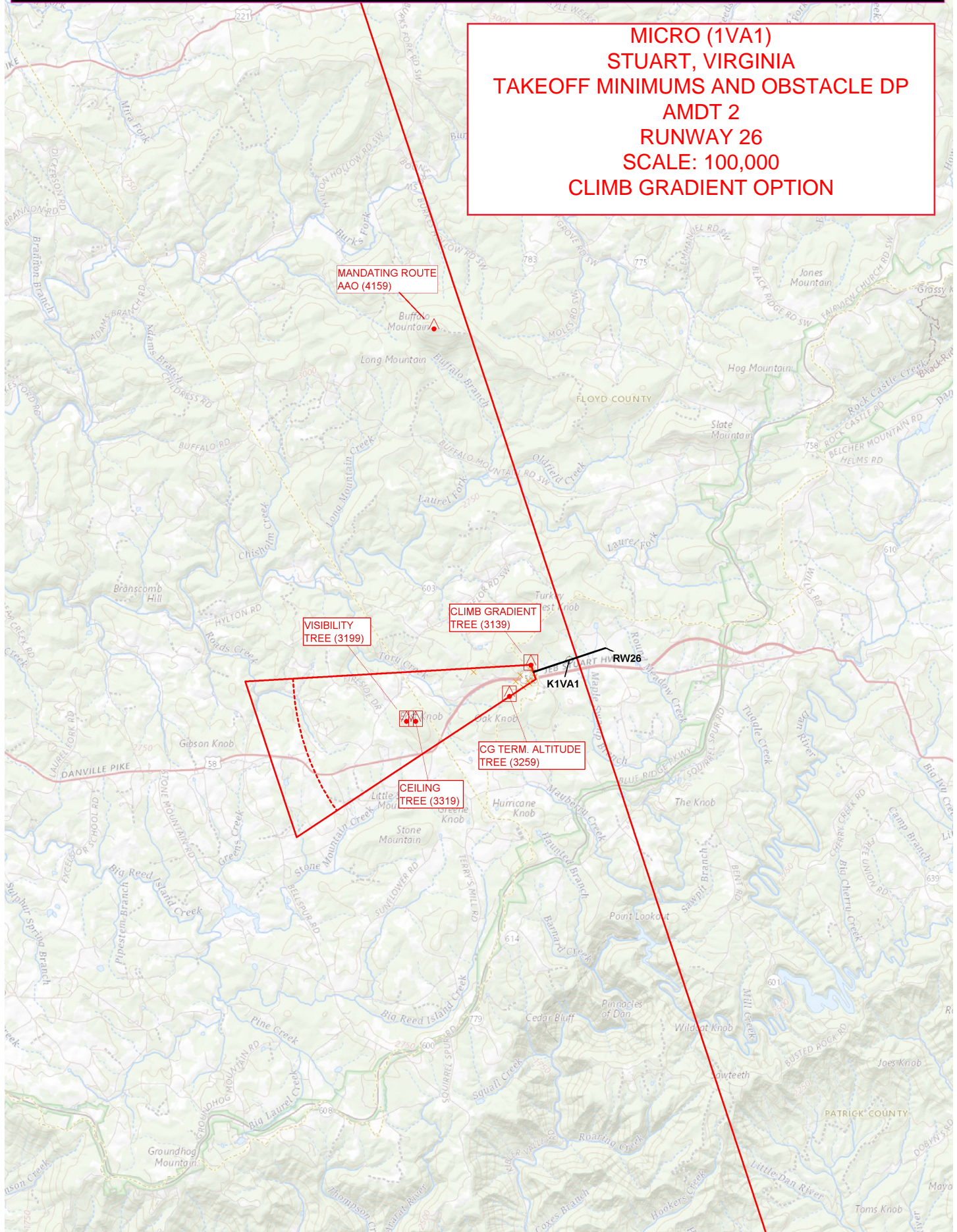
CG TERM. ALTITUDE
TREE (3199)

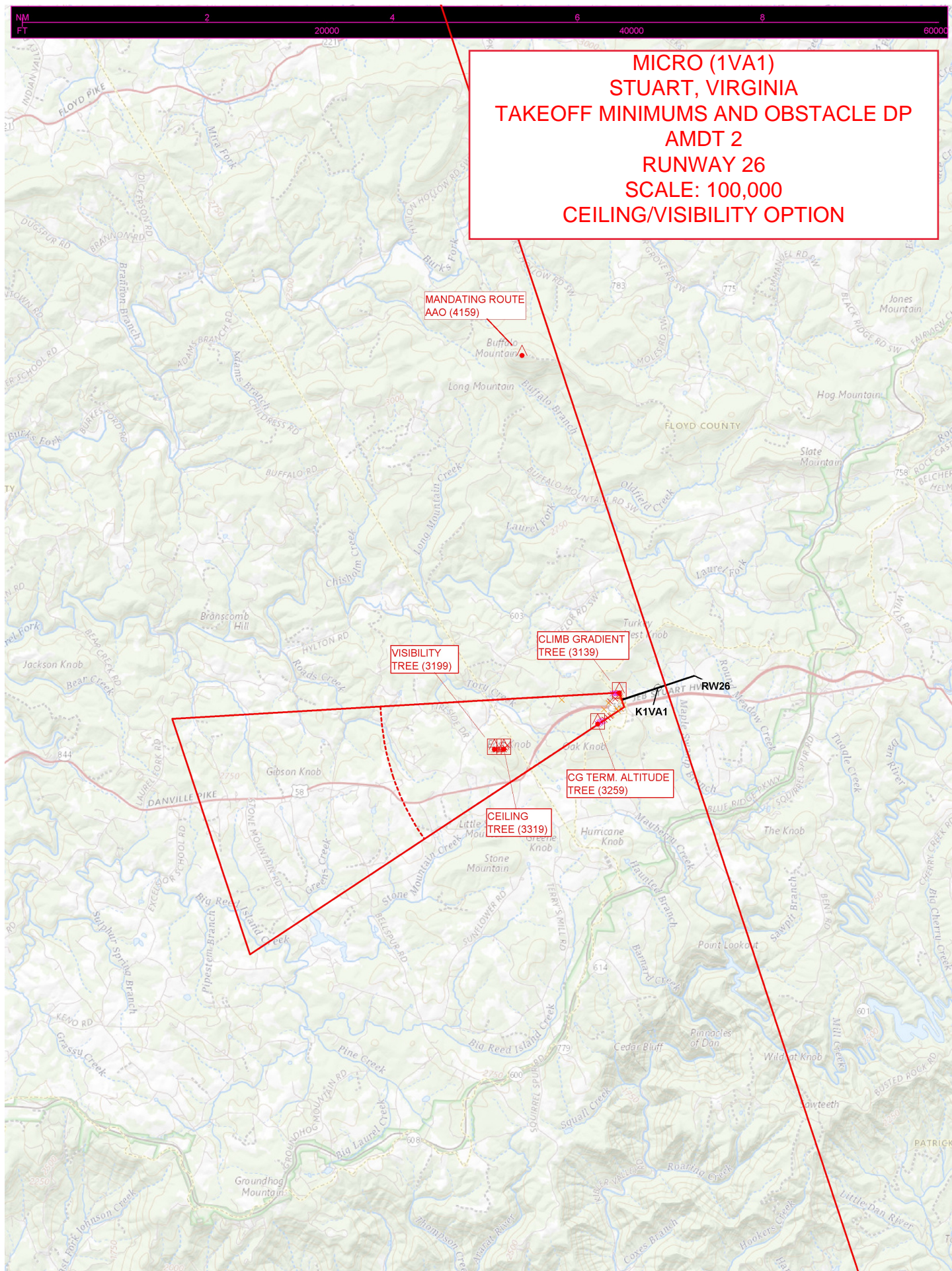
CTC GREENSBORO APP WITHIN
20 NM ON 124.35 269.225

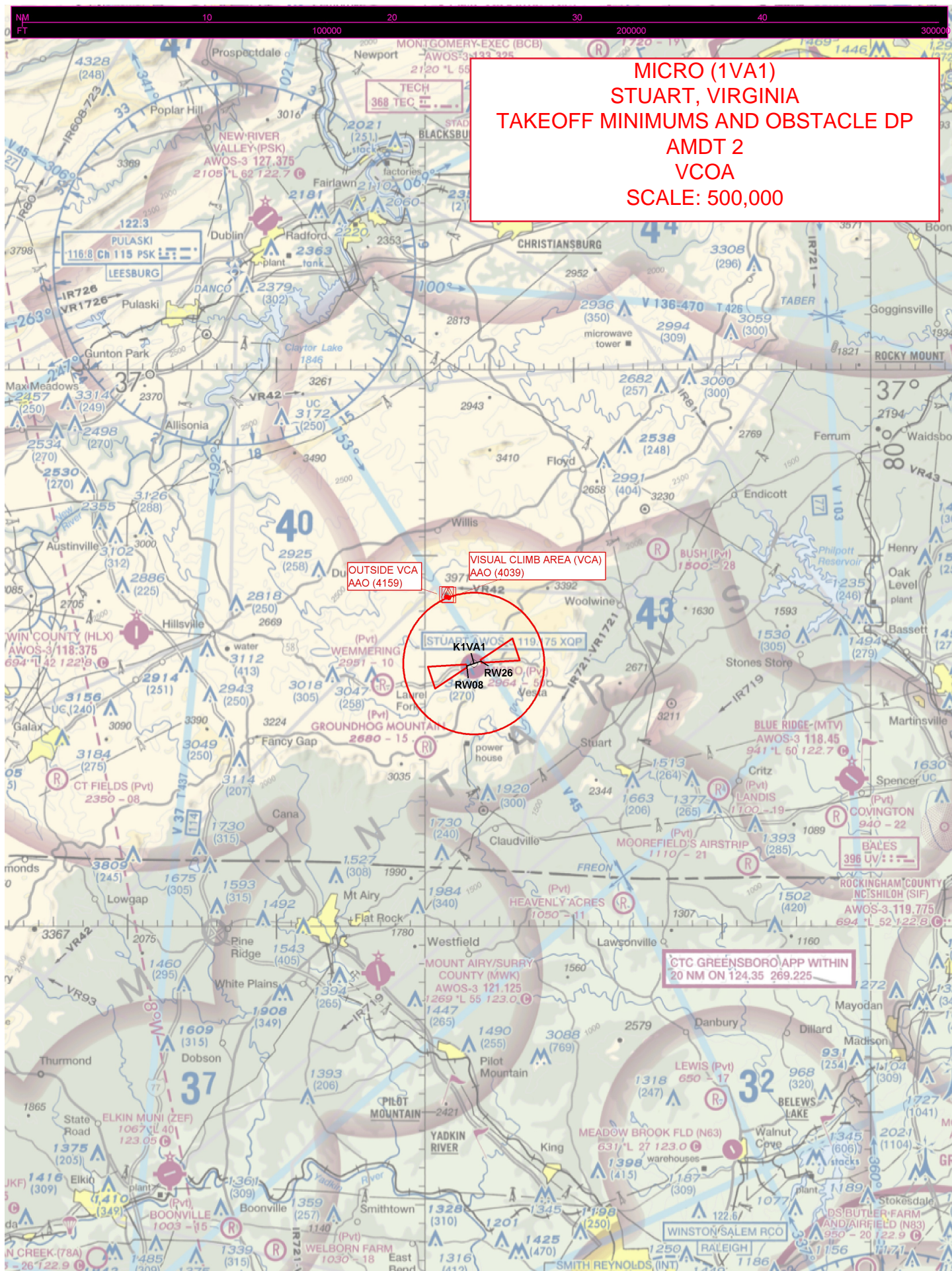




**MICRO (1VA1)
STUART, VIRGINIA
TAKEOFF MINIMUMS AND OBSTACLE DP
AMDT 2
RUNWAY 26
SCALE: 100,000
CLIMB GRADIENT OPTION**







**MICRO (1VA1)
STUART, VIRGINIA
TAKEOFF MINIMUMS AND OBSTACLE DP
AMDT 2
VCOA
SCALE: 100,000**

