

Flight Procedures Cover Page	Task Action: P-NOTAM	Task Type: IAP	Estimated Chart Date: 12/26/2024	APWS Task ID: E916ED7EF5944E5A9BC310EFA13BE69E	APWS Project ID: 3D2E46084BB74FA5A732095B76D63A4F
Procedure: RNAV (GPS) RWY 35 AMDT 2C		Enroute: NO	Specialist: Dougherty, Steven		Agreement Number:
Airport ID: KAIG			Airport City: ANTIGO		State: WI
Facility ID:	Facility Type:	Flight Inspection Remark Type:			

**Procedure Comments:**  
 PROCESSED IAW TECHNICAL SUPPORT GROUP (AJF-17) MEMO DATED 07/07/2021, SUBJECT: GUIDANCE FOR PROCEDURAL CHANGES REQUIRING FLIGHT INSPECTION/VALIDATION.

REASON FOR PROJECT: CLEAR TNOTAM 4/7981

ACTIVE AIRPORT DATA USED.

CONTACT DAVID M. DANNER, AJV-A421, 405-954-5077.

QUALITY  
33  
CHECKED

QUALITY  
13  
CHECKED

OLD

ANTIGO, WISCONSIN

AL-6215 (FAA)

22363

WAAS CH <b>45732</b> <b>W35A</b>	APP CRS <b>346°</b>	Rwy Idg TDZE Apt Elev	<b>4010</b> <b>1522</b> <b>1523</b>
--	------------------------	-----------------------------	---

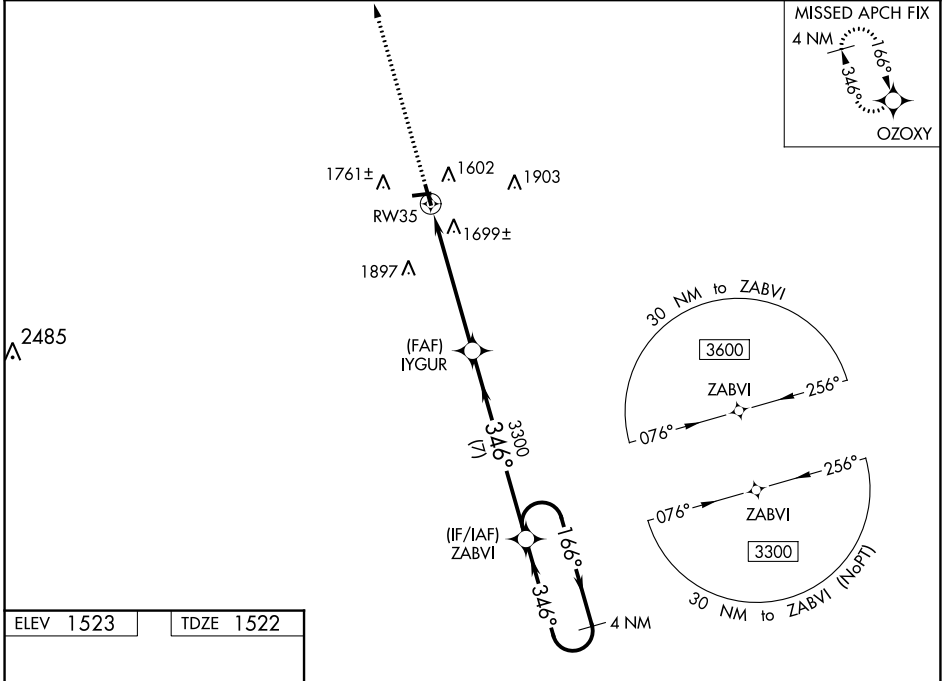
# RNAV (GPS) RWY 35

LANGLADE COUNTY (AIG)

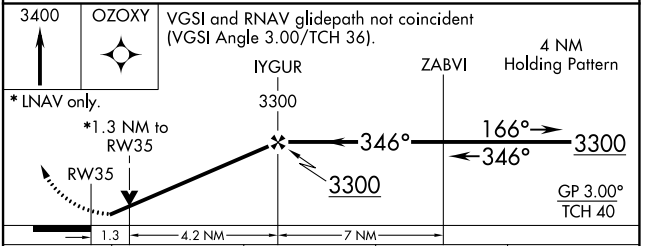
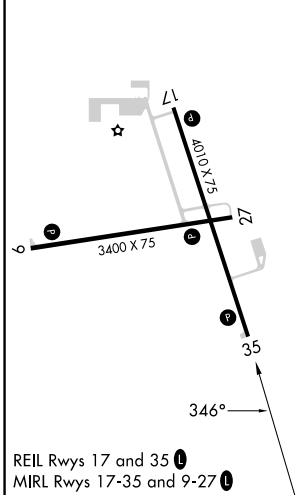
**⚠** For uncompensated Baro-VNAV systems, LNAV/VNAV NA below -18°C (0°F) or above 54°C (130°F). DME/DME RNP-0.3 NA. Baro-VNAV and VDP NA when using Wausau Downtown altimeter setting. Helicopter visibility reduction below ¼ SM NA. When local altimeter setting not received, use Wausau Downtown altimeter setting: increase all DA 105 feet and visibility LPV all Cats ¼ mile and LNAV/VNAV all Cats ¾ mile; increase all MDA 120 feet and visibility LNAV Cat C/D and Circling Cat C ½ mile and Circling Cat D ¼ mile.

**MISSED APPROACH:** Climb to 3400 direct OZOXY and hold.

AWOS-3 <b>119.075</b>	MINNEAPOLIS CENTER <b>124.4 317.7</b>	UNICOM <b>122.8 (CTAF) 0</b>
--------------------------	--	---------------------------------



ELEV 1523	TDZE 1522
-----------	-----------



CATEGORY	A	B	C	D
LPV DA		1772-1	250 (300-1)	
LNAV/VNAV DA		2019-1¾	497 (500-1¾)	
LNAV MDA	1960-1	438 (500-1)	1960-1¼	438 (500-1¼)
CIRCLING	2120-1	597 (600-1)	2120-1½ 597 (600-1½)	2120-2 597 (600-2)

ANTIGO, WISCONSIN  
Amdt 2B 26MAY16

45°09'N-89°07'W

# RNAV (GPS) RWY 35

EC-3, 18 APR 2024 to 16 MAY 2024