

RNAV (GPS) RWY 2

KENT STATE UNIVERSITY (1G3)

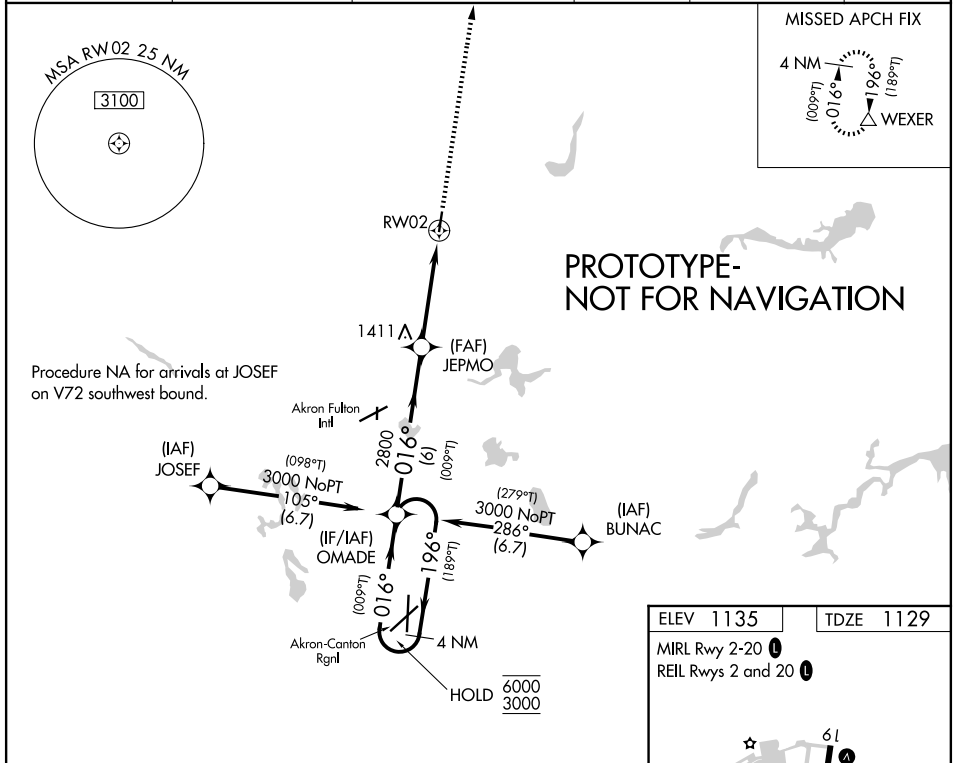
WAAS CH 61001 W02A	APP CRS 016°	Rwy Ldg 3947 TDZE 1129 Apt Elev 1135
--	------------------------	---

RNP APCH - GPS.

▼ Rwy 2 helicopter visibility reduction below 1 SM NA. Procedure NA at night.
▲ NA When local altimeter setting not received, use AKR altimeter setting and increase LPV DA to 1529 and all visibilities 1/8 SM, increase all MDAs 40 feet and increase LNAV Cat C visibility 1/8 SM.

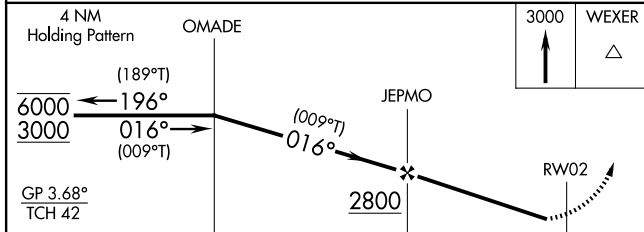
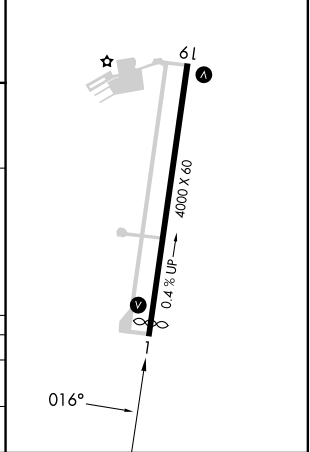
MISSED APPROACH: Climb to 3000 direct WEXER and hold.

AWOS-2 119.15	AKR ASOS 126.825	CLEVELAND APP CON * 125.5 371.875	CLNC DEL 125.65	UNICOM 122.725 (CTAF)	122.9 0
-------------------------	----------------------------	---	---------------------------	---------------------------------	-----------------------



ELEV 1135	TDZE 1129
-----------	-----------

MIRL Rwy 2-20 **0**
 REIL Rws 2 and 20 **0**



CATEGORY	A	B	C	D
LPV DA	1499-1 370 (400-1)			NA
LNAV MDA	1760-1 631 (700-1)		1760-1 3/4 631 (700-1 3/4)	NA