

Flight Procedures Cover Page	Task Action: Abbreviated Amendment	Task Type: IAP	Estimated Chart Date: 09/05/2024	APWS Task ID: E9EE8D2A0E094259A294A5C3E13F4B71	APWS Project ID: 440CFA2977C84BD1A0EAB18F755021F0
Procedure: ILS OR LOC RWY 3 AMDT 1C		Enroute: NO	Specialist: Smart, Phillip		Agreement Number:
Airport ID: KCHO			Airport City: CHARLOTTESVILLE		State: VA
Facility ID:	Facility Type:	Flight Inspection Remark Type:			

Procedure Comments:

Corrected the VOR radial on the alternate missed approach instructions.

Processed IAW Technical Support Group (AJF-17) Memo dated 07/07/2021 Guidance for Procedural Changes Requiring Flight Inspection/Validation

CONTACT MR. ROBERT HAMILTON, MANAGER AJV-A433 AT 405-954-4608. FEDERAL AVIATION ADMINISTRATION.



OLD

CHARLOTTESVILLE, VIRGINIA

AL-765 (FAA)

19003

LOC/DME I-CHO 111.7 Chan 54	APP CRS 030°	Rwy ldg 6801 TDZE 640 Apt Elev 640
--	------------------------	---

ILS or LOC RWY 3

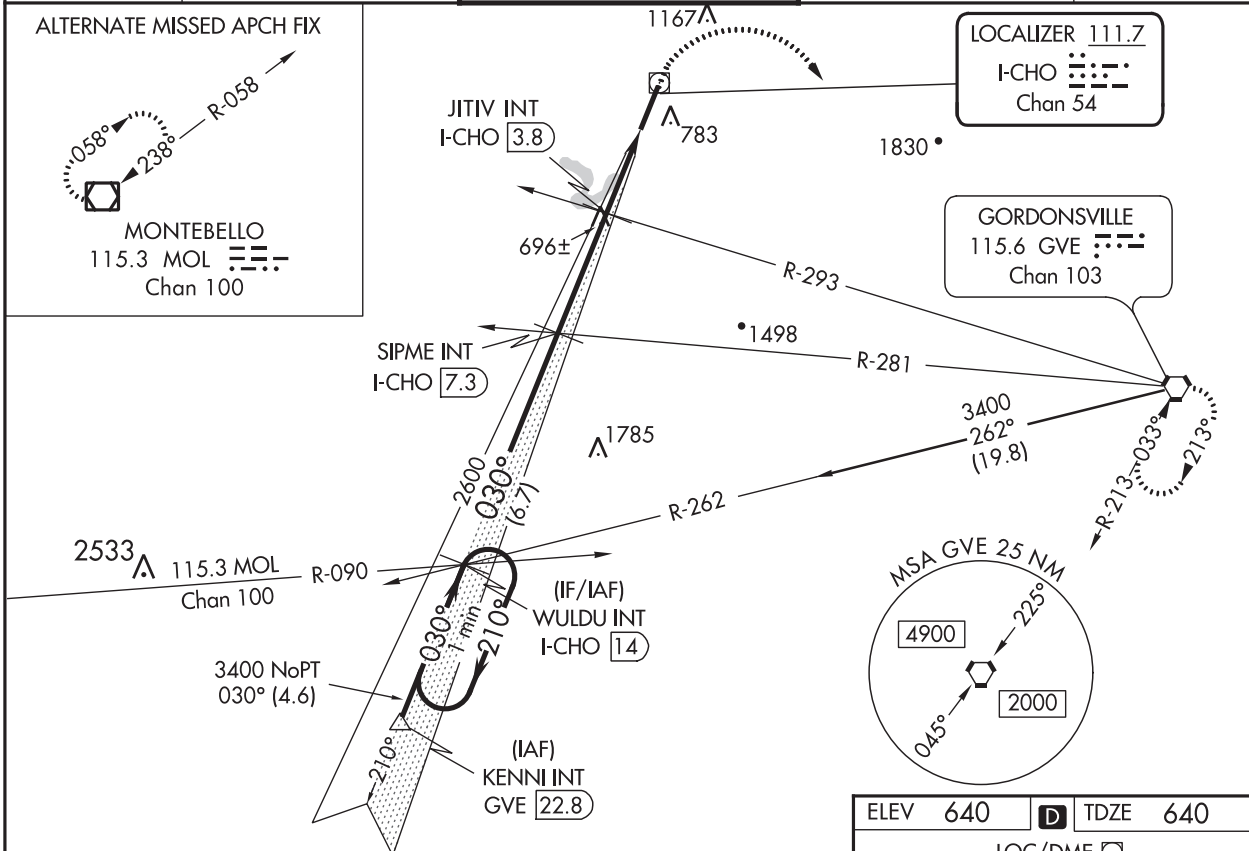
CHARLOTTESVILLE-ALBEMARLE (CHO)

▼ When local altimeter setting not received, use Orange altimeter setting and increase S-ILS 3 DA to 912 and all MDA 80 feet; increase S-LOC 3 Cats C/D, Circling Cats C/D, JITIV fix minimums S-LOC 3 Cats C/D, and JITIV fix minimums Circling Cats C/D visibility ¼ mile. VDP NA when using Orange altimeter setting. For inop ALS when using Orange altimeter setting increase S-ILS 3 all Cats visibility to ¾, S-LOC 3 Cats C, D visibility to 2 miles, and S-LOC 3 JITIV fix minimums Cat C, D visibility to 1½ mile.

MALS R

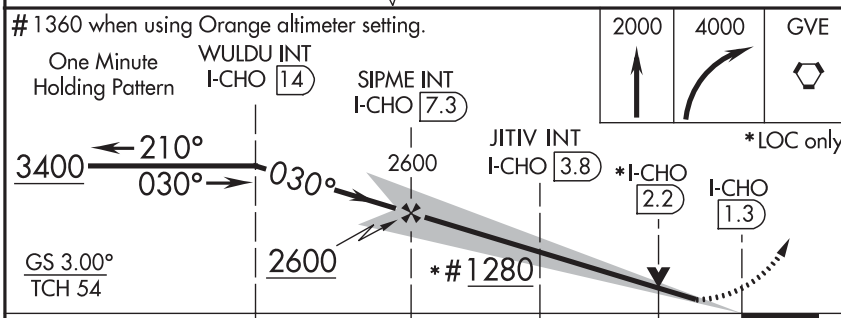
MISSED APPROACH:
Climb to 2000 then climbing right turn to 4000 direct GVE VORTAC and hold.

ATIS 118.425	POTOMAC APP CON 132.85 323.125	CHARLOTTESVILLE TOWER ★ 124.5 (CTAF) 338.275	GND CON 121.9 338.275	UNICOM 122.95
------------------------	--	--	---------------------------------	-------------------------



NE-3, 03 JAN 2019 to 31 JAN 2019

NE-3, 03 JAN 2019 to 31 JAN 2019



ELEV 640	D	TDZE 640			
LOC/DME					
FAF to MAP 6 NM					
Knots	60	90	120	150	180
Min:Sec	6:00	4:00	3:00	2:24	2:00

CATEGORY	A	B	C	D
S-ILS 3	840-½ 200 (200-½)			
S-LOC 3	1280-½	640 (700-½)	1280-1⅜	640 (700-1⅜)
CIRCLING	1280-1	640 (700-1)	1500-2½	1500-2¾
JITIV FIX MINIMUMS (DUAL VOR RECEIVERS OR DME REQUIRED)				
S-LOC 3	980-½	340 (400-½)	980-5/8	340 (400-5/8)
CIRCLING	1100-1	460 (500-1)	1500-2½	1500-2¾

CHARLOTTESVILLE, VIRGINIA
Amdt 1B 03JAN19

38°08'N-78°27'W

CHARLOTTESVILLE-ALBEMARLE (CHO)
ILS or LOC RWY 3