

Flight Procedures Cover Page	Task Action: FLIGHT CHECK	Task Type: IAP	Estimated Chart Date: 05/14/2026	APWS Task ID: EB2C73523EAD48348E67AC8073767F24	APWS Project ID: CA7F0A1AB1BC482FB882B68E0A9AF80C
Procedure: RNAV (GPS) RWY 14 AMDT 1C		Enroute: NO	Specialist: Young, Silvia		Agreement Number:
Airport ID: KFVE			Airport City: FRENCHVILLE		State: ME
Facility ID:	Facility Type:	Flight Inspection Remark Type: New FC Slot			

**Procedure Comments:**

ACTIVE DATA USED FOR KFVE AIRPORT AND RWYS.

CANCEL NOTAM FDC 5/4700.

RAISED ALTITUDES AT IF/IAF CESGE AND FOR TAA 043/6 CW 223/6 TO CESGE FROM 3100 TO 4100.

RAISED MISSED APRPOACH HOLDING ALTITUDE FROM 3000 TO 3400.

NEW LNAV FINAL OBSTACLE: "1124 TREE (23-020639) 471720N/0682004W".

NEW CIRCLING CAT B OBSTACLE: "TOWER (23-000175) 471809N/0681652W".

CRC REMAINDER CHANGED TO "137F3D77".

KFVE\_RNAV\_(GPS)\_RWY\_14\_AMDT\_1C\_1 - KMZ FILE FOR LPV MA PENETRATION/ADJUSTMENT

KFVE\_RNAV\_(GPS)\_RWY\_14\_AMDT\_1C\_2 - KMZ FILE FOR THE ADJUSTED PROCEDURE

CONTACT CASIMIR TABAKA 405.202.7857







FRENCHVILLE, MAINE

AL-6195 (FAA)

25051

WAAS CH <b>93917</b> <b>W14A</b>	APP CRS <b>133°</b>	Rwy Idg TDZE Apt Elev	<b>4600</b> <b>984</b> <b>987</b>
--	------------------------	-----------------------------	---

# RNAV (GPS) RWY 14

NORTHERN AROOSTOOK RGNL (FVE)

RNP APCH - GPS.

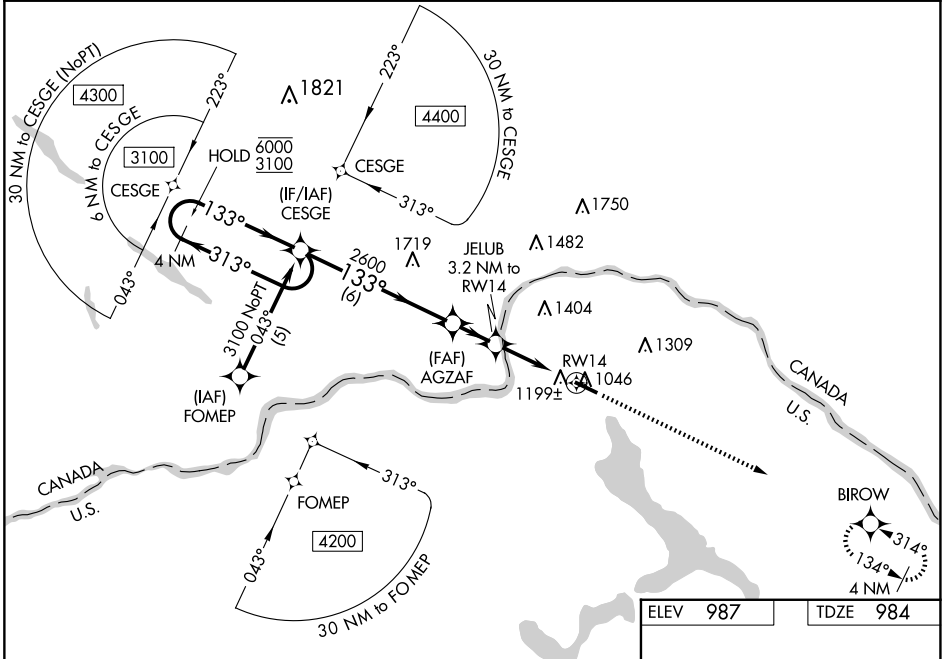
⚠ For uncompensated Baro-VNAV systems, LNAV/VNAV NA below -16°C or above 54°C. Rwy 14 helicopter visibility reduction below 3/4 SM NA. Baro-VNAV and VDP NA when using CAR altimeter setting. When local altimeter setting not received, use CAR altimeter setting and increase LPV DA to 1386 feet, LNAV/VNAV DA to 1635 feet and all MDAs 120 feet. Increase LPV all Cats visibility 1/2 SM, LNAV Cat C visibility 3/4 SM, Cat D and Circling Cat D visibility 1/4 SM and Circling Cat C visibility 1/2 SM.

MISSED APPROACH:  
Climb to 3000 direct  
BIROW and hold.

ASOS  
**135.725**

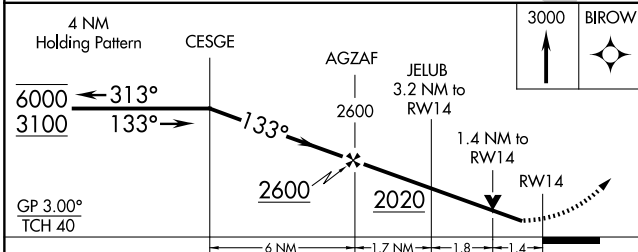
BOSTON CENTER  
**124.75 239.05**

UNICOM  
**122.7 (CTAF) 0**

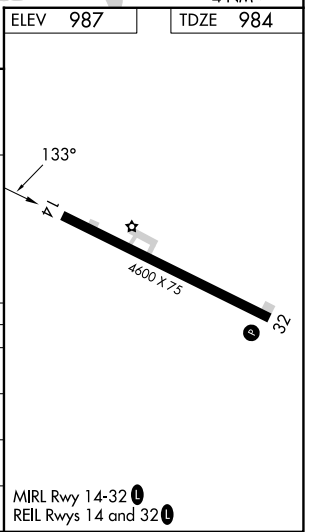


NE-1, 02 OCT 2025 to 30 OCT 2025

NE-1, 02 OCT 2025 to 30 OCT 2025



CATEGORY	A	B	C	D
LPV DA		1270-1	286 (300-1)	
LNAV/VNAV DA		1519-2	535 (600-2)	
LNAV MDA	1460-1	476 (500-1)	1460-1 3/8 476 (500-1 3/8)	1460-1 1/2 476 (500-1 1/2)
<b>C</b> CIRCLING	1560-1 573 (600-1)	1580-1 593 (600-1)	1840-2 1/2 853 (900-2 1/2)	1840-2 3/4 853 (900-2 3/4)



FRENCHVILLE, MAINE  
Amdt 1B 20FEB25

47°17'N-68°19'W

# NORTHERN AROOSTOOK RGNL (FVE)

## RNAV (GPS) RWY 14