

Flight Procedures Cover Page	Task Action: Abbreviated Amendment	Task Type: SID	Estimated Chart Date: 05/14/2026	APWS Task ID: EBCBAFB0F2524FEA918D9420C37C7A50	APWS Project ID: 5C20521C38E74618901CA3EF973FD8CB
Procedure: JOJJO SIX (RNAV)		Enroute: YES	Specialist: Clark, Jacob		Agreement Number:
Airport ID: KCLT			Airport City: CHARLOTTE		State: NC
Facility ID:	Facility Type:	Flight Inspection Remark Type:			

Procedure Comments:
 UPDATING RUNWAY RENUMBERING CHANGING 18R/36L TO 19R/1L.
 AMENDMENT USING ACTIVE AND PENDING AIRPORT DATA.
 PROCESSED IAW TECHNICAL SUPPORT GROUP (AJF-17) MEMO DATED 07/07/2021, SUBJECT: GUIDANCE FOR PROCEDURAL CHANGES REQUIRING FLIGHT INSPECTION/VALIDATION.
 CONTACT: CASIMIR TABAKA: 405-954-7931.

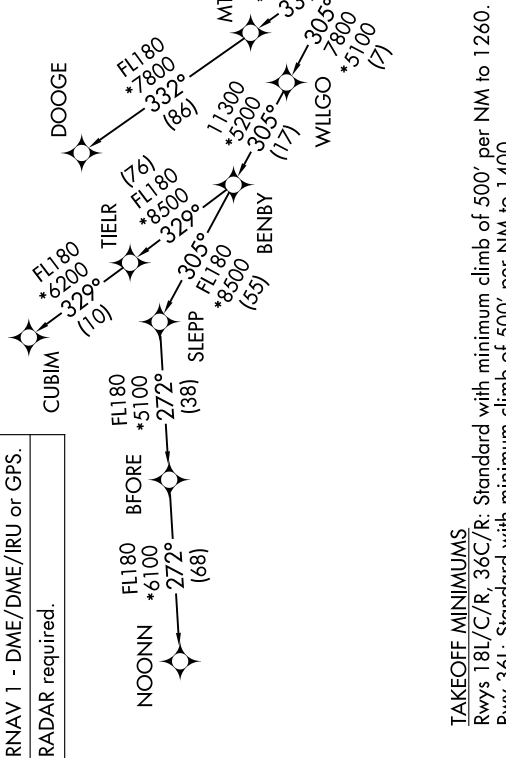


JOJO FIVE DEPARTURE (RNAV)

CHARLOTTE DEP CON
120.5 257.2
D-ATIS DEP
132.1
CUNC DEL
127.15 348.6
CPDIC
GND CON
121.8 348.6 (WEST)
121.9 348.6 (EAST)
CHARLOTTE TOWER
118.1 257.8 (Rwy 18L-36R)
126.4 257.8 (Rwy 18C-36C)
133.35 257.8 (Rwy 18R-36L)

OLD

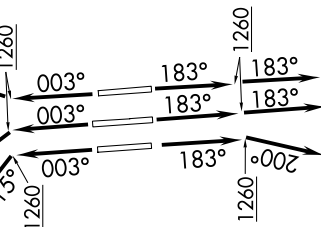
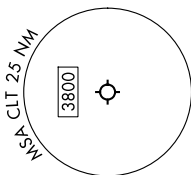
**TOP ALTITUDE:
8000**



TAKEOFF MINIMUMS

Rwys 18L/C/R, 36C/R: Standard with minimum climb of 500' per NM to 1260.
 Rwy 36L: Standard with minimum climb of 500' per NM to 1400.

- NOTE: For turbo jets only.
- NOTE: If unable to accept climb rates, advise ATC on initial contact.
- NOTE: NOONN Transition ATC assigned only.
- NOTE: Upon reaching 10000 MSL, accelerate to and maintain 280K, if unable advise ATC.



(CONTINUED ON FOLLOWING PAGE)

NOTE: Chart not to scale.

JOJO FIVE DEPARTURE (RNAV)

JOJJO FIVE DEPARTURE (RNAV)



DEPARTURE ROUTE DESCRIPTION SEE ADDITIONAL REQUIREMENTS ON AAUP

TAKEOFF RUNWAYS 18L/C: Climb on heading 183° to 1260, then on heading 183° or as assigned by ATC on RADAR vectors to WAYDS, thence. . . .

TAKEOFF RUNWAY 18R: Climb on heading 183° to 1260, then on heading 200° or as assigned by ATC on RADAR vectors to WAYDS, thence. . . .

TAKEOFF RUNWAY 36L: Climb on heading 003° to 1260, then on heading 315° or as assigned by ATC on RADAR vectors to WAYDS, thence. . . .

TAKEOFF RUNWAY 36C: Climb on heading 003° to 1260, then on heading 330° or as assigned by ATC on RADAR vectors to WAYDS, thence. . . .

TAKEOFF RUNWAY 36R: Climb on heading 003° to 1260, then on heading 025° or as assigned by ATC on RADAR vectors to WAYDS, thence. . . .

. . . .on depicted route to JOJJO, then on assigned transition. Maintain 8000.
Expect clearance to filed altitude within 10 minutes after departure.

CUBIM TRANSITION (JOJJO5.CUBIM)

DOOGE TRANSITION (JOJJO5.DOOGE)

NOONN TRANSITION (JOJJO5.NOONN)

OLD

SE-2, 02 OCT 2025 to 30 OCT 2025

SE-2, 02 OCT 2025 to 30 OCT 2025