

Flight Procedures Cover Page	Task Action: FLIGHT CHECK	Task Type: IAP	Estimated Chart Date: 05/14/2026	APWS Task ID: ED32198A34DD42F99E3EF9381A5015A9	APWS Project ID: 31511D64A47948A093D35C9665194D5A
Procedure: RNAV (GPS) RWY 22R AMDT 0B		Enroute: NO	Specialist: Smith, Rodney		Agreement Number:
Airport ID: KMHR			Airport City: SACRAMENTO		State: CA
Facility ID:	Facility Type:	Flight Inspection Remark Type: New FC Slot			

Procedure Comments:  
ACTIVE AIRPORT DATA USED.  
  
CLEARS NOTAM 4/0537.  
  
POC KYLE THOMPSON 405-954-2135

QUALITY  
6 SN 2/9/26  
CHECKED

QUALITY  
41  
CHECKED

## FIPC BASIC FORM

<b>PROCEDURE:</b> RNAV (GPS) RWY 22R AMDT 0B		<b>AIRPORT NAME:</b> SACRAMENTO MATHER		<b>AIRPORT ID:</b> KMHR	<b>SPECIAL CONTROL NO:</b> SG-02-217-26
<b>FAC ID:</b> KMHR22R		<b>CITY:</b> SACRAMENTO		<b>ST:</b> CA	<b>ORIG CHART DATE:</b> 05/14/2026
<b>DFL TYPE:</b> PROC/S	<b>THIRD PARTY:</b> <input type="checkbox"/> YES	<b>EST. TIME ON SITE:</b> 0.4	<b>REIMB. NUMBER:</b>	<b>PTS TASK ID:</b> ED32198A34DD42F99E3EF9381A5015A9	

### PREFLIGHT NOTES

<b>REVIEWER:</b>	<b>DATE:</b>
<b>COMMENTS:</b>	<b>CHECK ONE:</b> <input type="checkbox"/> FLT CK REQ <input type="checkbox"/> NFCR <input type="checkbox"/> REJECT
	<b>YES</b> <b>NO</b>
	<b>CPV COMPLETE?</b> <input checked="" type="checkbox"/> X <input type="checkbox"/>

### PROCEDURE RESULTS

<b>INSPECTION DATE:</b> 03/27/2026	<b>CREW #:</b> VN569	<b>N #:</b> N76	<b>INSTRUMENT PROCEDURE STATUS:</b> <input checked="" type="checkbox"/> SAT <input type="checkbox"/> SAT W/CHANGES <input type="checkbox"/> UNSAT	<b>ARINC CODING:</b> <input checked="" type="checkbox"/> SAT <input type="checkbox"/> SAT/GOLD <input type="checkbox"/> UNSAT
<b>FLIGHT INSPECTOR SIGNATURE:</b> wendi s gima @ 03/27/2026 14:25		<b>PRINTED NAME:</b> GIMA, WENDI SUEMI		<b>NOTAM INITIATED?</b> <input type="checkbox"/> YES <input checked="" type="checkbox"/> NO

**FLIGHT INSPECTOR REMARKS:**  
 SACRAMENTO MATHER (MHR), SACRAMENTO, CALIFORNIA. RNAV (GPS) RWY 22R AMDT 0B, SAT.  
 Major changes: all mins raised except LPV and CAT D circle for new obstacle eval. LNAV/VNAV profile FAF to MAP flown SAT.  
 New circling obstacles flown SAT.  
 SIAP(s) verified satisfactory in accordance with FAA Order 8200.1, Chapter 6.  
 Periodic requirements met.

### IN-FLIGHT OBSTACLE REPORT

<b>OBSTRUCTION ID #:</b>	<b>COORDINATES OR LOCATION:</b>	<b>GNSS ALTITUDE (MSL):</b>	<b>BAROMETRIC ALTITUDE (MSL):</b>	<b>HEIGHT ABOVE GROUND LEVEL:</b>
--------------------------	---------------------------------	-----------------------------	-----------------------------------	-----------------------------------

WAAS CH 42943 W22B	APP CRS <b>221°</b>	Rwy ldg <b>6081</b> TDZE <b>94</b> APT Elev <b>98</b>
--------------------------	------------------------	---

# RNAV (GPS) RWY 22R

SACRAMENTO MATHER (KMHR)

RNP APCH - GPS

MISSED APPROACH: CLIMB TO 500 THEN CLIMB TO 3000 DIRECT SAC VORTAC AND HOLD.

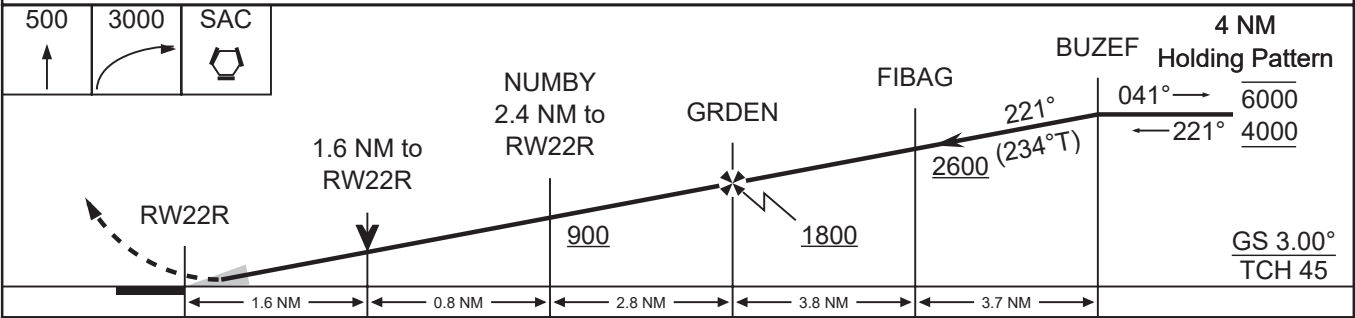
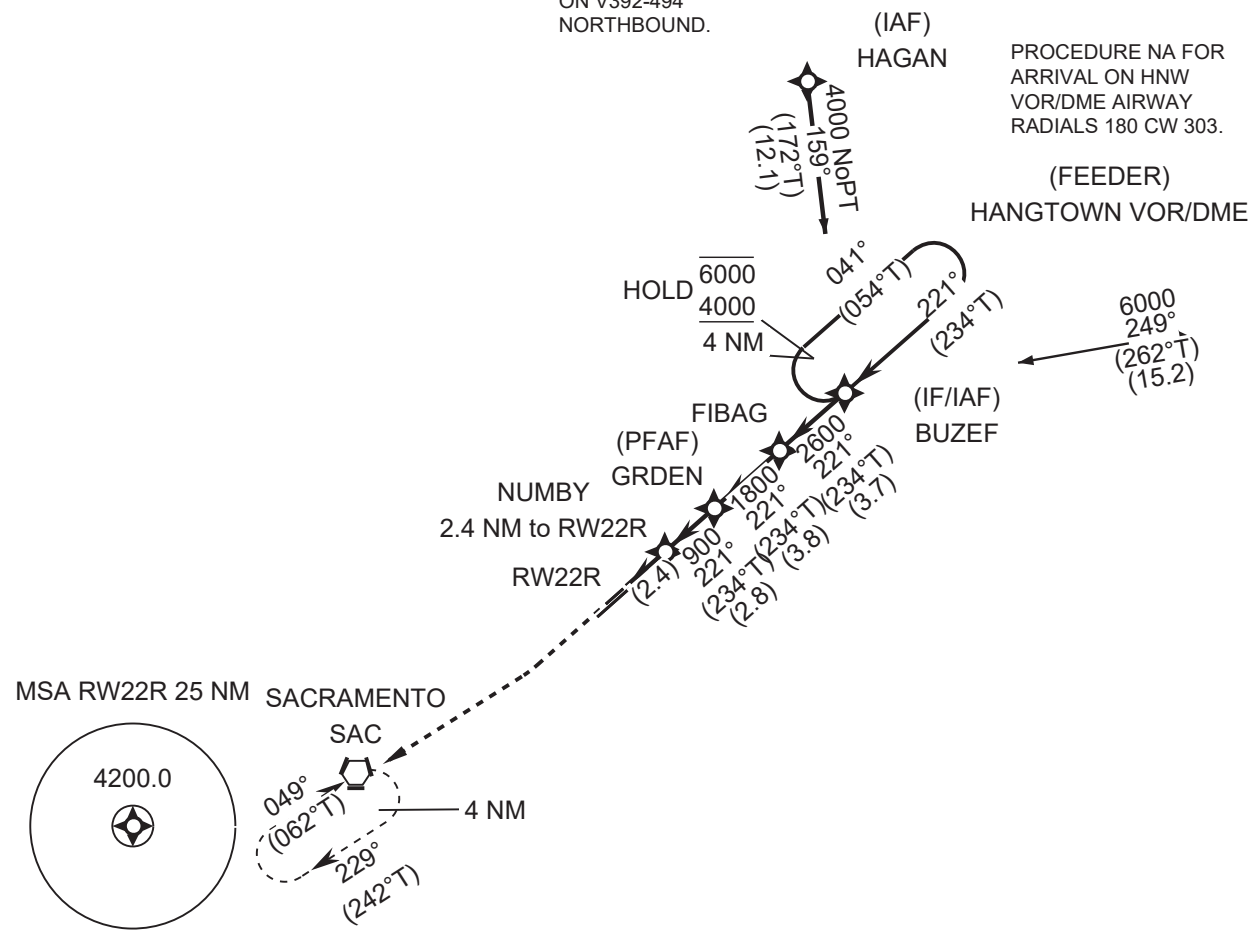
FOR UNCOMPENSATED BARO-VNAV SYSTEMS, LNAV/VNAV NA BELOW -15°C OR ABOVE 54°C.  
CHART NOTE: CIRCLING NA NW OF RWY 4L-22R.  
CHART NOTE: PROCEDURE NA AT NIGHT.

ATIS **118.325** NORCAL APP CON **127.4 317.5** MATHER TOWER GND CON **120.65 (CTAF) 282.25 121.85 307.9** UNICOM **122.95**

## PROTOTYPE-NOT FOR NAVIGATION

PROCEDURE NA FOR ARRIVALS AT HAGAN ON V392-494 NORTHBOUND.

PROCEDURE NA FOR ARRIVAL ON HNW VOR/DME AIRWAY RADIALS 180 CW 303.



CATEGORY	A	B	C	D
LPV	294-1 200 (200-1)			
LNAV/VNAV	532-1 1/4 438 (400-1 1/4)			
LNAV	640-1 546 (600-1)		640-1 5/8 546 (600-1 5/8)	
CIRCLING	640-1 542 (600-1)		640-1 5/8 542 (600- 15/8) 898-2 1/2 800 (800-2 1/2)	

WAAS CH <b>42943</b> <b>W22B</b>	APP CRS <b>221°</b>	Rwy Ldg TDZE <b>94</b> Apt Elev <b>98</b>
--	------------------------	---

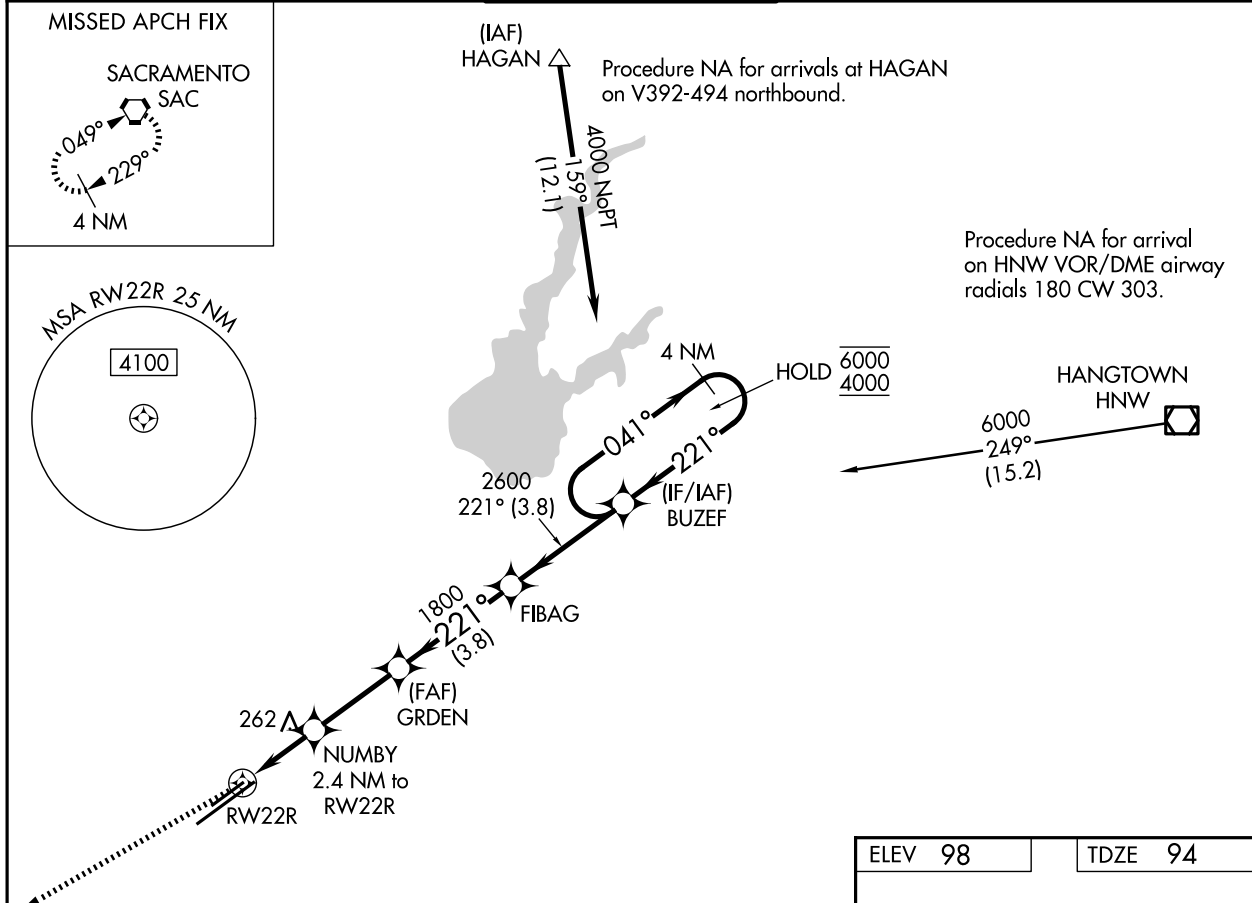
**OLD**

**RNAV (GPS) RWY 22R**  
SACRAMENTO MATHER (MHR)

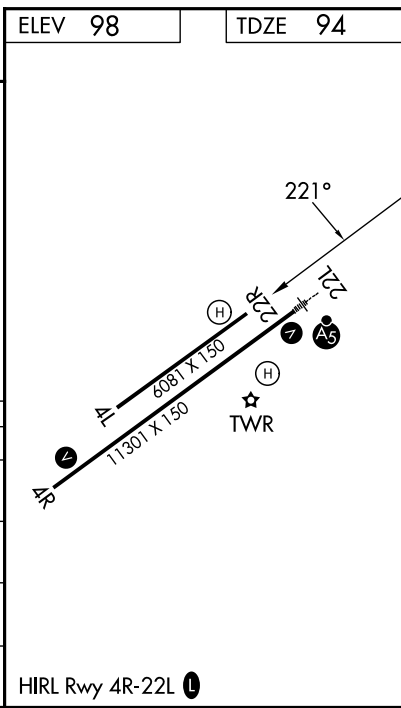
RNP APCH.  
 Circling NA northwest of Rwy 4L-22R. For uncompensated Baro-VNAV systems, LNAV/VNAV NA below -1.5°C or above 54°C. Procedure NA at night.

MISSED APPROACH: Climb to 500 then climb to 3000 direct SAC VORTAC and hold.

ATIS <b>118.325</b>	NORCAL APP CON <b>127.4 317.5</b>	MATHER TOWER ★ <b>120.65(CTAF) 282.25</b>	GND CON <b>121.85 307.9</b>	UNICOM <b>122.95</b>
------------------------	--------------------------------------	--	--------------------------------	-------------------------



500	3000	SAC				
*LNAV only		NUMBY 2.4 NM to RW22R	GRDEN 1800	FIBAG	BUZEF	4 NM Holding Pattern
*1.4 NM to RW22R		900*	1800	2600	6000	4000
RW22R		1.4 NM	1 NM	2.8 NM	3.8 NM	3.8 NM
CATEGORY	A	B	C	D		
LPV DA	294-3/4		200 (200-3/4)			
LNAV/VNAV DA	369-7/8		275 (300-7/8)			
LNAV MDA	580-1	486 (500-1)	580-13/8	486 (500-13/8)		
CIRCLING	580-1	482 (500-1)	600-1 1/2 502 (600-1 1/2)	800-2 1/4 702 (800-2 1/4)		



SW-2, 27 NOV 2025 to 25 DEC 2025

SW-2, 27 NOV 2025 to 25 DEC 2025