

SAN ANGELO, TEXAS

AL-367 (USAF)

FIG

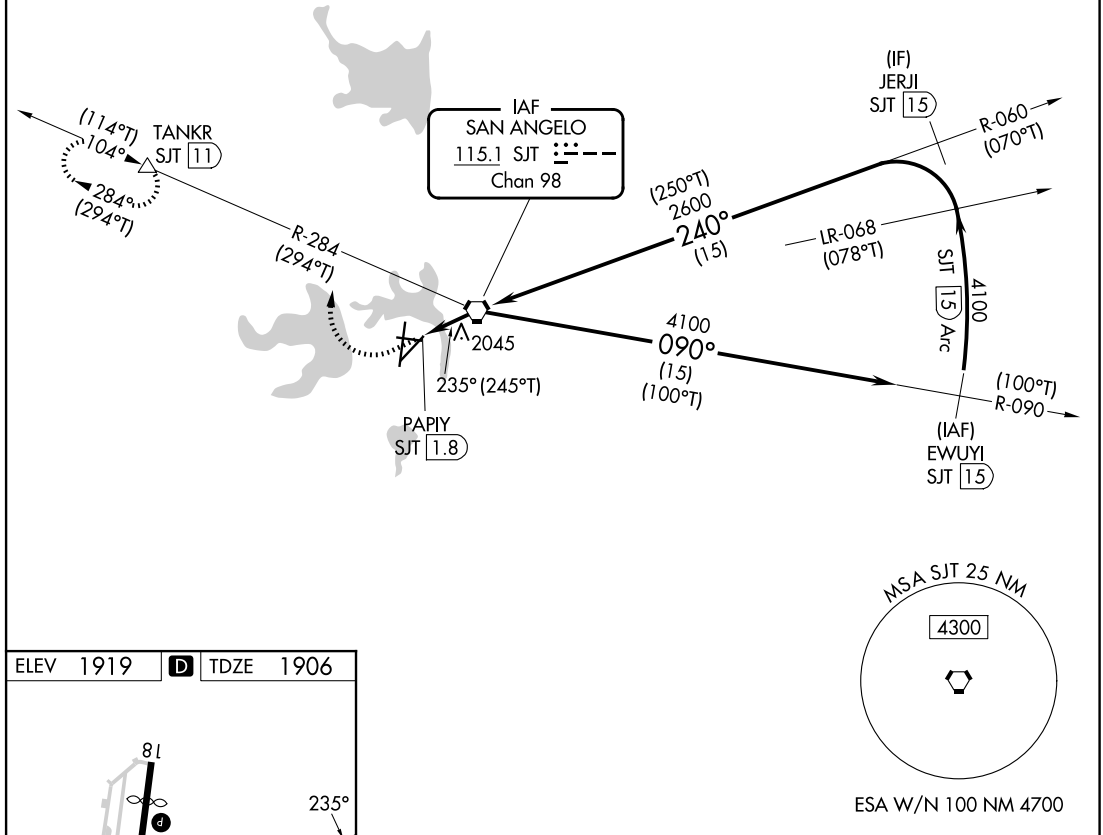
VORTAC SJT 115.1 Chan 98	APP CRS 235°	Rwy Idg TDZE Apt Elev	5940 1906 1919
--	------------------------	-----------------------------	---

HI - VOR Z OR TACAN RWY 21

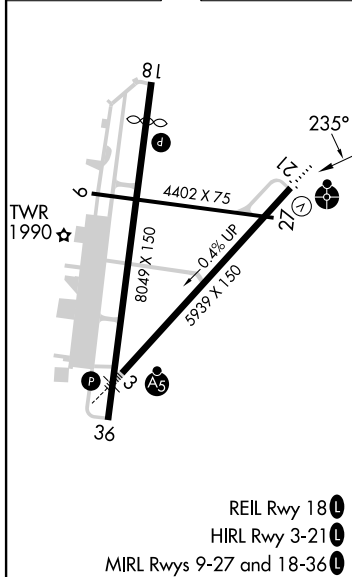
SAN ANGELO RGNL/MATHIS FIELD (SJT)

DME required.		MISSED APPROACH: Climb to 3000 then climbing right turn to 4400 on heading 360° and SJT VORTAC R-284 to TANKR / 11 DME and hold, continue climb-in-hold to 4400.		
ATIS 128.45 319.0	SAN ANGELO APP CON ★ 125.35 354.1	MATHIS TOWER ★ 118.3(CTAF) 284.7	GND CON 121.9 348.6	UNICOM 122.95

PROTOTYPE-NOT FOR NAVIGATION



ELEV 1919	D TDZE 1906
-----------	--------------------



3000	4400	TANKR	SJT VORTAC	VGSI and descent angles not coincident (VGSI Angle 3.00/TCH 52).	
↑	hdg 360°	△	12000	(100°T) 090°	
				JERJI SJT 15	
				EWUYI SJT 15	
				4100 4100	
				Arc	
				2600	
				235°	
				3.34° TCH 59	
				1.1 NM 0.7 NM 1.5 NM	
CATEGORY	A	B	C	D	E
S-21	NA	NA	2300-1 1/8	394 (400-1 1/8)	NA
CIRCLING	NA	NA	2500-1 1/2	2580-2	NA
			581 (600-1 1/2)	661 (700-2)	

AUTOMATED AL-367 HI - VOR Z OR TACAN RWY 21

SC-3
13 JAN 2025
COMPILER: CG
REVIEWER:
DBL CHKR:
EFF: FIG

SAN ANGELO, TEXAS
Amdt 3 FIG

31°21'N-100°30'W SAN ANGELO RGNL/MATHIS FIELD (SJT)
HI - VOR Z OR TACAN RWY 21