

Flight Procedures Cover Page	Task Action: FLIGHT CHECK	Task Type: IAP	Estimated Chart Date: 05/14/2026	APWS Task ID: EDF7685C90784D4F9F56B651B5E79A16	APWS Project ID: A1357C06227A4AAE954BC7DFDA770292
Procedure: HI - VOR Z OR TACAN RWY 21 AMDT 3		Enroute: NO	Specialist: Ulvestad, Arthur		Agreement Number:
Airport ID: KSJT			Airport City: SAN ANGELO		State: TX
Facility ID: SJT	Facility Type: VORTAC	Flight Inspection Remark Type: New FC Slot			

**Procedure Comments:**  
ACTIVE AIRPORT DATA USED

WOOLE (SJ) LOM DECOMMISSIONED.

APPROVAL LETTER REQUEST TO ESTABLISH 3.34 VDA.

CONTACT: RAKE MCGRAW 405-954-8711



VORTAC SJT <b>115.1</b> Chan <b>98</b>	APCH CRS <b>235°</b>	Rwy ldg TDZE <b>1906</b> Arpt Elev <b>1919</b>
--	-------------------------	--

**OLD**

HI-VOR Z or TACAN RWY 21

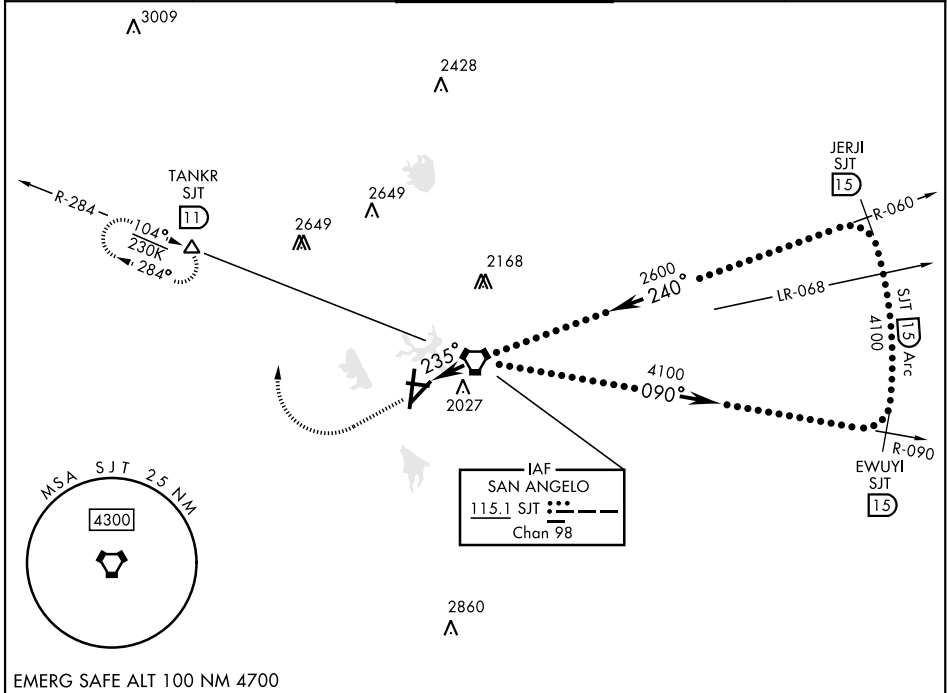
[USAF]

SAN ANGELO RGNL/MATHIS FLD (KSJT)

DME required  
\*Circling not authorized for CAT D W of Rwy 18-36.

MISSED APPROACH: Climb to 3000 then climbing right turn to 4400 on heading 360° and SJT VORTAC R-284 to TANKR INT/11 DME and hold, continue climb-in-hold to 4400.

ATIS <b>128.45 319.0</b>	SAN ANGELO APP CON ★ <b>125.35 354.1</b>	MATHIS TOWER ★ <b>118.3</b> (CTAF) <b>284.7</b>	GND CON <b>121.9 348.6</b>	UNICOM <b>122.95</b>
-----------------------------	---	--	-------------------------------	-------------------------



EMERG SAFE ALT 100 NM 4700

VGSI and descent angles not coincident (VGSI Angle 3.00/TCH 52). VORTAC SJT 12,000 EWUYI SJT (15) 4100 PAPIY SJT (1.8) 3.34° TCH 59 235° 2600 1.8 NM	3000 4400 hdg 360°	SJT R-284 TANKR SJT (11)	ELEV 1919 TDZE 1906 Rwy 18 ldg 7150' Rwy 36 ldg 7152' 81 1907
	12,000 090° 4100 4100 240° 4100 235°	TWR 1990 4406 x 75 8043 x 150 5939 x 150 36 REIL Rwy 18 HIRL Rwy 3-21 MIRL Rwy 9-27, 18-36	
CATEGORY C D E S-21 2300-1 1/8 394 (400-1 1/8) CIRCLING* 2500-1 1/2 581 (600-1 1/2) 2580-2 661 (700-2) NOT AUTHORIZED			

HI-VOR Z or TACAN RWY 21

SC-3, 30 OCT 2025 to 27 NOV 2025

SC-3, 30 OCT 2025 to 27 NOV 2025



# Federal Aviation Administration

---

## Memorandum

To: Manager, Flight Procedure Implementation and Oversight Branch

From: Beverly Bordy, Manager, Instrument Flight Procedures (IFP)  
Coordination Team, AJV-A43

Subject: Approval Request: SAN ANGELO RGNL/MATHIS FLD, SAN ANGELO, TX, (SJT) HI-VOR Z OR TACAN RWY 21

---

FAAO 8260.3G, para 2-6-2a. Glidepath Angle (GPA) and Vertical Descent Angle (VDA). Flight Standards approval is required to establish a VDA (of a procedure where the FAC is straight-in aligned) that is more than 0.20 degrees greater than the glidepath angle of a VGSI installed to the same runway.

The VGSI angle for Rwy 21 is 3.00. The current published VDA is 3.34. The HI-VOR Z OR TACAN RWY 21 procedure has been previously flight checked at 3.34 VDA. Request approval to keep a 3.34 VDA.