

Flight Procedures Cover Page	Task Action: FLIGHT CHECK	Task Type: IAP	Estimated Chart Date: 04/17/2025	APWS Task ID: EE0CDAD09980410B89FD4D644DAAAE31	APWS Project ID: FE893EAE0E5A4477BF73A9B9B5F98BE4
Procedure: ILS OR LOC RWY 9 AMDT 4		Enroute: NO	Specialist: Fresella, David		Agreement Number:
Airport ID: KBKV			Airport City: BROOKSVILLE		State: FL
Facility ID: OSV	Facility Type: ILS	Flight Inspection Remark Type: New FC Slot			

Procedure Comments:

ACTIVE AIRPORT WITH PENDING RWY 9/21 DATA USED.
ACTIVE DATA USED FOR I-OSV, PIE VORTAC, AND LAL VORTAC.
APCH END OF RWY 21 MOVED 815 FT SW. NEW RWY 9 LOC ANTENNA LOCATION.
UPDATED MA INSTRUCTIONS.
CONTACT DAVID DANNER, AJV-A421, 405-954-5077.

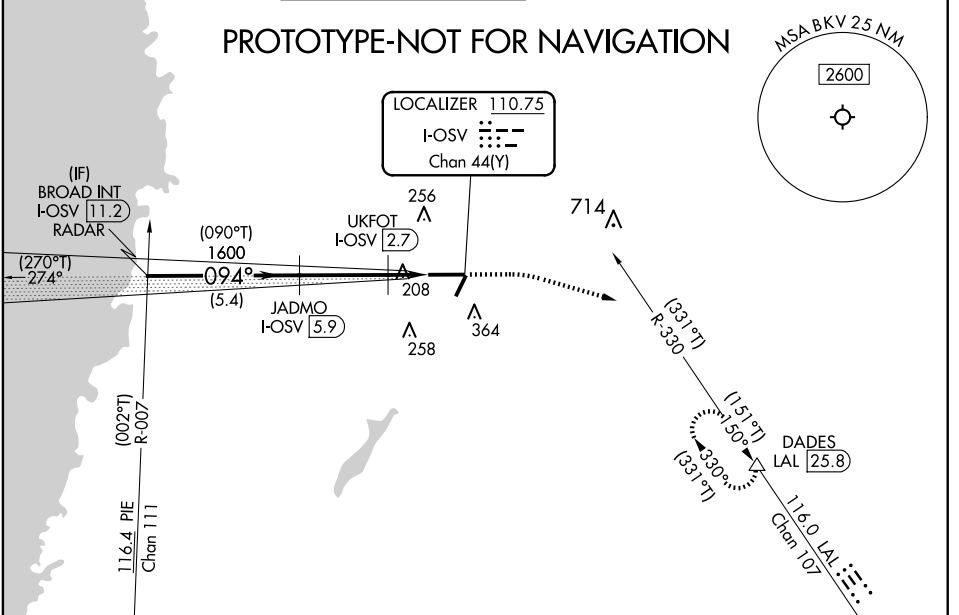


LOC/DME F-OSV 110.75 Chan 44 (Y)	APP CRS 094°	Rwy Idg TDZE Apt Elev	7001 76 76
--	------------------------	-----------------------------	---------------------------------------

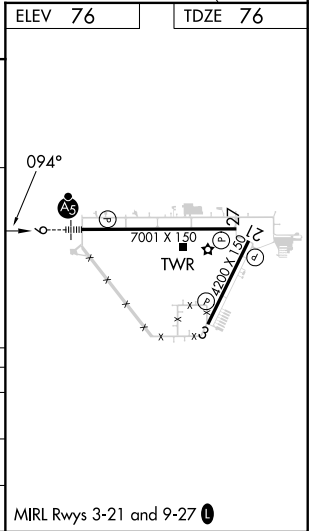
ILS or LOC RWY 9

BROOKSVILLE-TAMPA BAY RGNL (BKV)

RADAR required for procedure entry. DME required.		MALSR 	MISSED APPROACH: Climb to 500 then climbing right turn to 3000 on heading 110° and LAL VORTAC R-330 to DADES/LAL 25.8 DME and hold, continue climb-in-hold to 3000.		
	Circling Rwy 3 NA at night.				
ASOS 134.725	TAMPA APP CON 125.3 316.05	BROOKSVILLE TOWER ★ 118.55 (CTAF)	GND CON 121.4	CINC DEL 119.125 (When twr closed)	UNICOM 123.0



ELEV 76		TDZE 76	
BROAD INT I-OSV RADAR		500	3000
		hdg 110°	
		LAL R-330	DADES
		△	
2000		JADMO I-OSV [5.9]	UKFOT I-OSV [2.7]
1600		I-OSV [1.2]	
GS 3.00° TCH 56			
1600		600	
5.4 NM		3.1 NM	
		1.5 NM	
CATEGORY	A	B	C
S-ILS 9	276-1/2		200 (200-1/2)
S-LOC 9	460-1/2	384 (400-1/2)	460-5/8 384 (400-5/8)
CIRCLING	680-1	604 (700-1)	680-13/4 760-21/4 604 (700-13/4) 684 (700-21/4)



BROOKSVILLE, FLORIDA

AL-6210 (FAA)

24249

LOC/DME I-OSV 110.75 Chan 44 (Y)	APP CRS 094°	Rwy Idg 7001 TDZE 76 Apt Elev 76
--	------------------------	---

OLD

ILS or LOC RWY 9

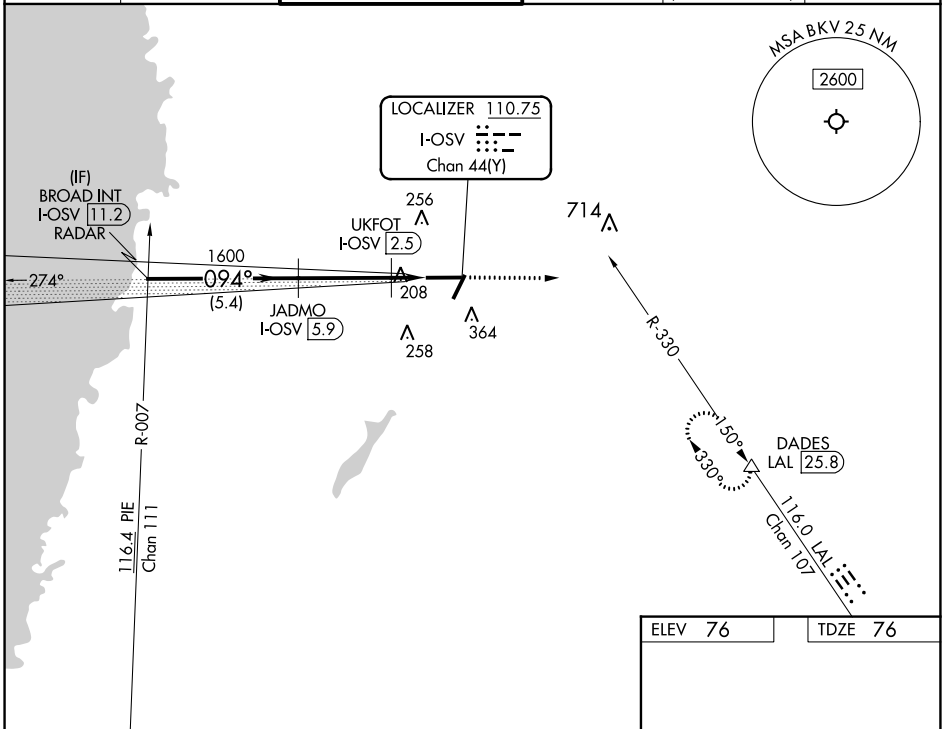
BROOKSVILLE-TAMPA BAY RGNL (BKV)

RADAR required for procedure entry. DME required.

MALSR

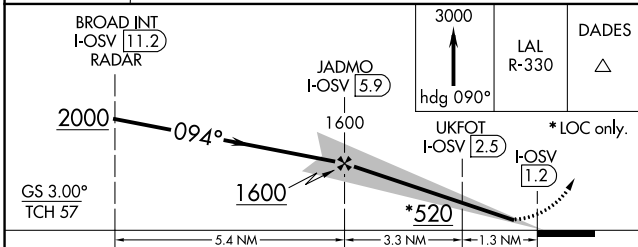
MISSED APPROACH: Climb to 3000 on heading 090° and LAL VORTAC R-330 to DADES/LAL VORTAC 25.8 DME and hold.

ASOS 134.725	TAMPA APP CON 125.3 316.05	BROOKSVILLE TOWER ★ 118.55 (CTAF) 0	GND CON 121.4	CLNC DEL 119.125 (When twr closed)	UNICOM 123.0
------------------------	--------------------------------------	--	-------------------------	---	------------------------

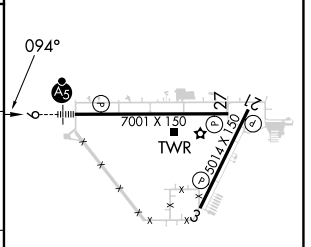


SE-3, 03 OCT 2024 to 31 OCT 2024

SE-3, 03 OCT 2024 to 31 OCT 2024



ELEV 76	TDZE 76
---------	---------



CATEGORY	A	B	C	D
S-ILS 9	276-1/2 200 (200-1/2)			
S-LOC 9	460-1/2	384 (400-1/2)	460-5/8	384 (400-5/8)
CIRCLING	680-1	604 (700-1)	680-1 3/4 604 (700-1 3/4)	760-2 1/4 684 (700-2 1/4)

MIRL Rwy 3-21 and 9-27 **0**

BROOKSVILLE, FLORIDA
Amdt 3 15AUG19

28°28'N-82°27'W

BROOKSVILLE-TAMPA BAY RGNL (BKV)

ILS or LOC RWY 9

BROOKSVILLE-TAMPA BAY RGNL (KBKV)
BROOKSVILLE, FL
ILS OR LOC RWY 9, AMDT 4
1:500,000

NAL AREA
se the Tampa VFR
ghts at or below 10,000'

SS B ALTITUDES TAMPA CLASS B
undreds of feet MSL
ndreds of feet MSL

IPA INSET
t for additional detail

100
60

CLOTE KEYS
ECIAL STATE
SERVATION AREA

CALADESI ISLAND
PECIAL STATE
ONSERVATION AREA

BROAD

JADMO

BROAD to JADMO AAO (279)

DADES_CIH TOWER (714)
12-002115

Missed Level Surface TOWER (709)
12-001668

DADES

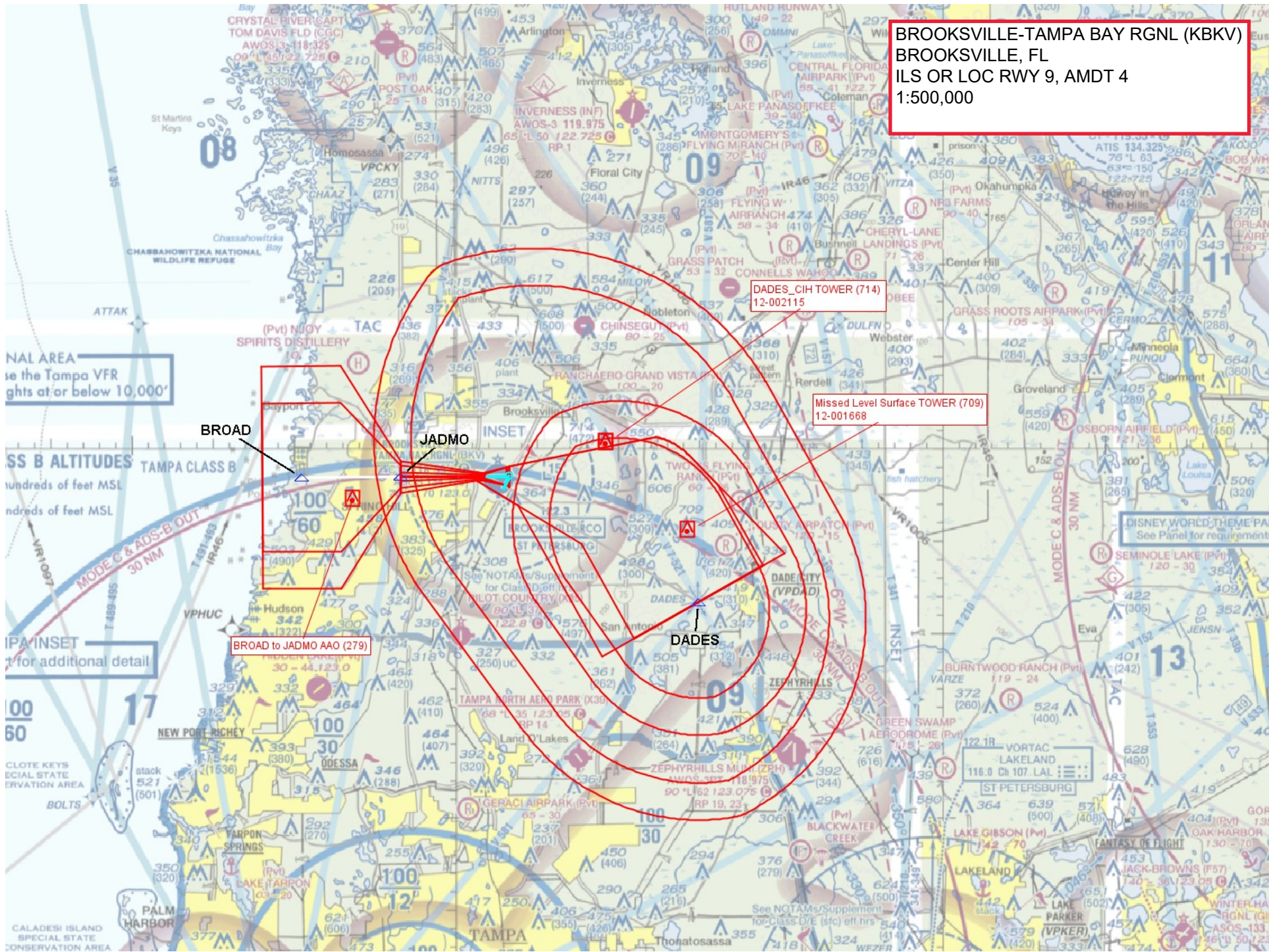
DISNEY WORLD THEME PA
See Panel for requirement

SEMINOLE LAKE (Pvt)
120 - 30

VORTAC
LAKELAND
116.0 Ch 107. LAL

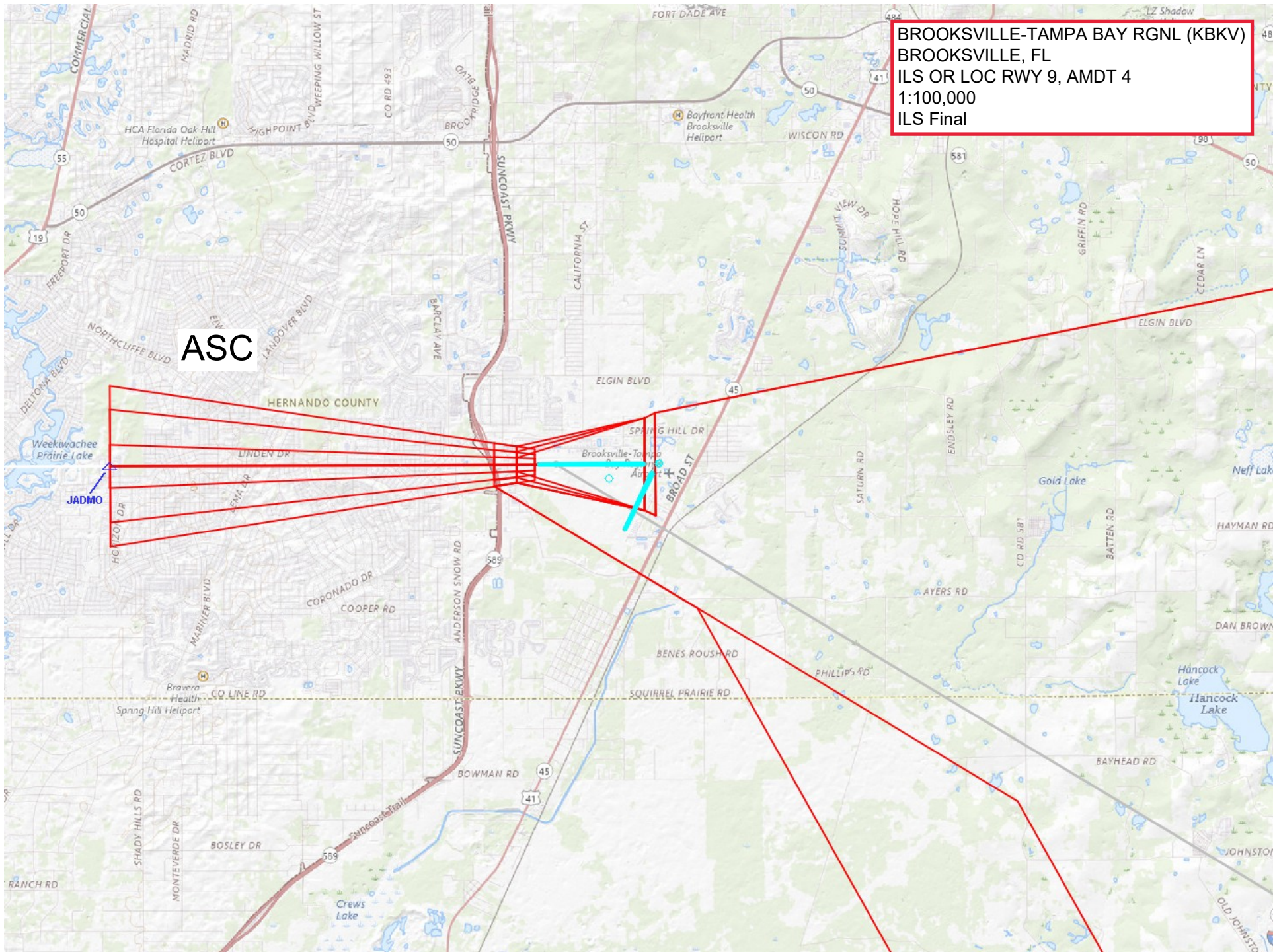
JACK-BROWNS (F57)
170 - 30 / 23 05

WINTER HA
RGNL (GIL)
ASOS-133



BROOKSVILLE-TAMPA BAY RGNL (KBKV)
BROOKSVILLE, FL
ILS OR LOC RWY 9, AMDT 4
1:100,000
ILS Final

ASC



BROOKSVILLE-TAMPA BAY RGNL (KBKV)
BROOKSVILLE, FL
ILS OR LOC RWY 9, AMDT 4
1:100,000
LOC Final, CIRCLING

