

Flight Procedures Cover Page	Task Action: FLIGHT CHECK	Task Type: IAP	Estimated Chart Date: 04/17/2025	APWS Task ID: EEDAE43415384EC49BCC4BD79367FF5F	APWS Project ID: 2FD58E655B3B444F922A148D30126757
Procedure: RNAV (GPS) RWY 36 AMDT 2		Enroute: NO	Specialist: Johnson, Timothy		Agreement Number:
Airport ID: K78			Airport City: ABILENE		State: KS
Facility ID:	Facility Type:	Flight Inspection Remark Type: New FC Slot			

Procedure Comments:
PENDING DATA USED FOR 4/17/25 CHART DATE.

NEW OBSTACLE SURVEY.

AIRPORT MAGVAR CHANGE: KK78: OLD 7E - NEW 3E.

CONTACT: DAVID DANNER (405) 954-5077.



FIPC BASIC FORM

PROCEDURE: RNAV (GPS) RWY 36 AMDT 2		AIRPORT NAME: ABILENE MUNI		AIRPORT ID: KK78	SPECIAL CONTROL NO: OG-12-230-24
FAC ID: KK7836.02		CITY: ABILENE		ST: KS	ORIG CHART DATE: 04/17/2025
DFL TYPE: PROC/S	THIRD PARTY: <input type="checkbox"/> YES	EST. TIME ON SITE: 0.4	REIMB. NUMBER:	PTS TASK ID: EEDAE43415384EC49BCC4BD79367FF5F	

PREFLIGHT NOTES

REVIEWER:	DATE:
COMMENTS:	CHECK ONE: <input type="checkbox"/> FLT CK REQ <input type="checkbox"/> NFCR <input type="checkbox"/> REJECT
	YES NO
	CPV COMPLETE? <input checked="" type="checkbox"/> X

PROCEDURE RESULTS

INSPECTION DATE: 01/14/2025	CREW #: VN423	N #: N66	INSTRUMENT PROCEDURE STATUS: <input checked="" type="checkbox"/> SAT <input type="checkbox"/> SAT W/CHANGES <input type="checkbox"/> UNSAT	ARINC CODING: <input checked="" type="checkbox"/> SAT <input type="checkbox"/> SAT/GOLD <input type="checkbox"/> UNSAT
FLIGHT INSPECTOR SIGNATURE: terry hester @ 01/15/2025 07:27		PRINTED NAME: HESTER, TERRY LEE		NOTAM INITIATED? <input type="checkbox"/> YES <input checked="" type="checkbox"/> NO

FLIGHT INSPECTOR REMARKS:
Special Number, OG-12-230-24: Abilene Muni, Abilene KS, RNAV (GPS) RWY 36 AMDT 2, SAT

IN-FLIGHT OBSTACLE REPORT

OBSTRUCTION ID #:	COORDINATES OR LOCATION:	GNSS ALTITUDE (MSL):	BAROMETRIC ALTITUDE (MSL):	HEIGHT ABOVE GROUND LEVEL:
--------------------------	---------------------------------	-----------------------------	-----------------------------------	-----------------------------------

WAAS CH 97734 W35A	APP CRS 357°	Rwy Idg 4100 TDZE 1151 Apt Elev 1153
--	------------------------	---

RNAV (GPS) RWY 36

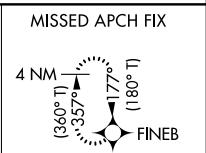
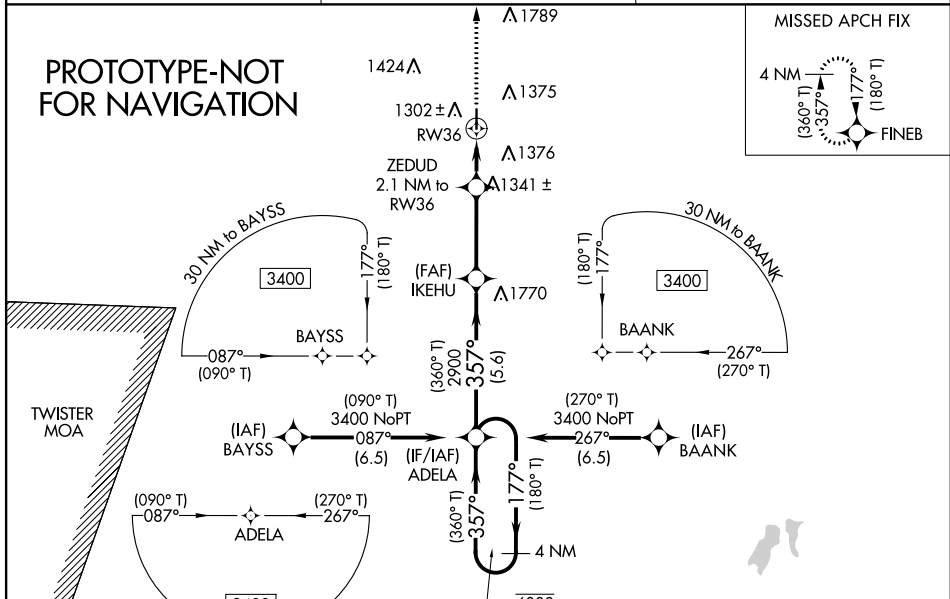
ABILENE MUNI (K78)

RNP APCH - GPS.

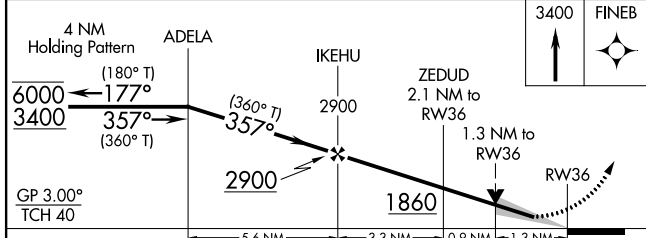
▼ For uncompensated Baro-VNAV systems, procedure NA below -17°C or above 54°C.
 ▲ NA Baro-VNAV and VDP NA when using SLN altimeter setting. When local altimeter setting not received, use SLN altimeter setting and increase LPV DA to 1468 feet and all visibilities ½ SM; increase LNAV/VNAV DA to 1658 feet and all visibilities ½ SM; increase all MDAs 80 feet and LNAV visibility Cat C ½ SM, and Circling visibility Cat C ¼ SM.

MISSED APPROACH: Climb to 3400 direct FINEB and hold.

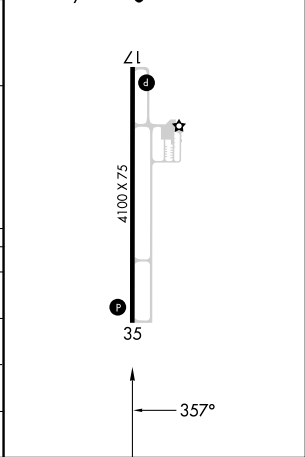
AWOS-2 124.125	MARSHALL GCA* 121.25 254.35	UNICOM 122.8 (CTAF) 0
--------------------------	---------------------------------------	---------------------------------



ELEV 1153	D TDZE 1151
REIL Rwy 18 and 36	
MIRL Rwy 18-36	



CATEGORY	A	B	C	D
LPV DA	1401-1	250 (300-1)		NA
LNAV/VNAV DA	1600-1¼	449 (500-1¼)		NA
LNAV MDA	1600-1	449 (500-1)	1600-1¼ 449 (500-1¼)	NA
CIRCLING	1680-1	527 (600-1)	1900-2¼ 747 (800-2¼)	NA



WAAS CH 97734 W35A	APP CRS 353°	Rwy Idg 4100 TDZE 1151 Apt Elev 1153
--	------------------------	---

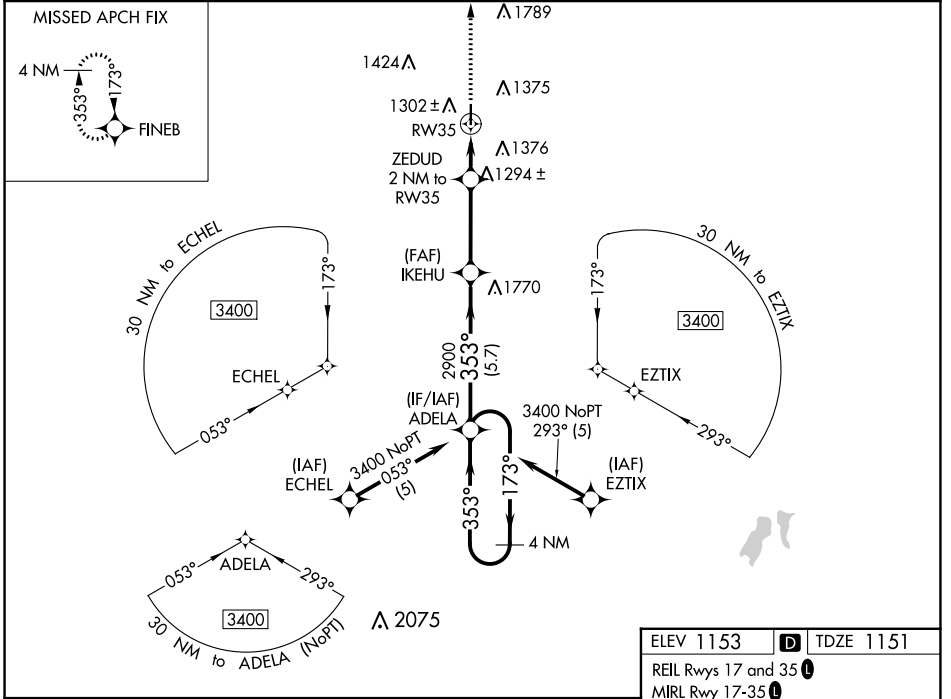
RNAV (GPS) RWY 35

ABILENE MUNI (K78)

⚠ For uncompensated Baro-VNAV systems, LNAV/VNAV NA below 17°C (2°F) or above 54°C (130°F). DME/DME RNP-0.3 NA. Baro-VNAV and VDP NA when using Salina altimeter setting. When local altimeter setting not received, use Salina altimeter setting. Circling Rwy 17 NA at night.

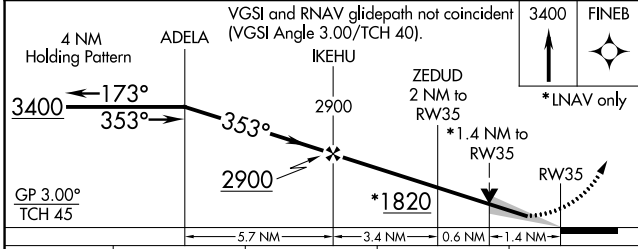
MISSED APPROACH: Climb to 3400 direct FINEB and hold.

AWOS-2 124.125	MARSHALL GCA* 121.25 254.35	UNICOM 122.8 (CTAF) 📻
--------------------------	---------------------------------------	--



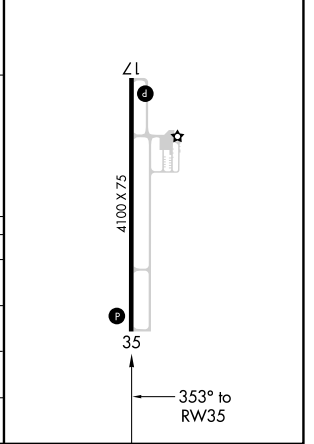
NC-2, 08 AUG 2024 to 05 SEP 2024

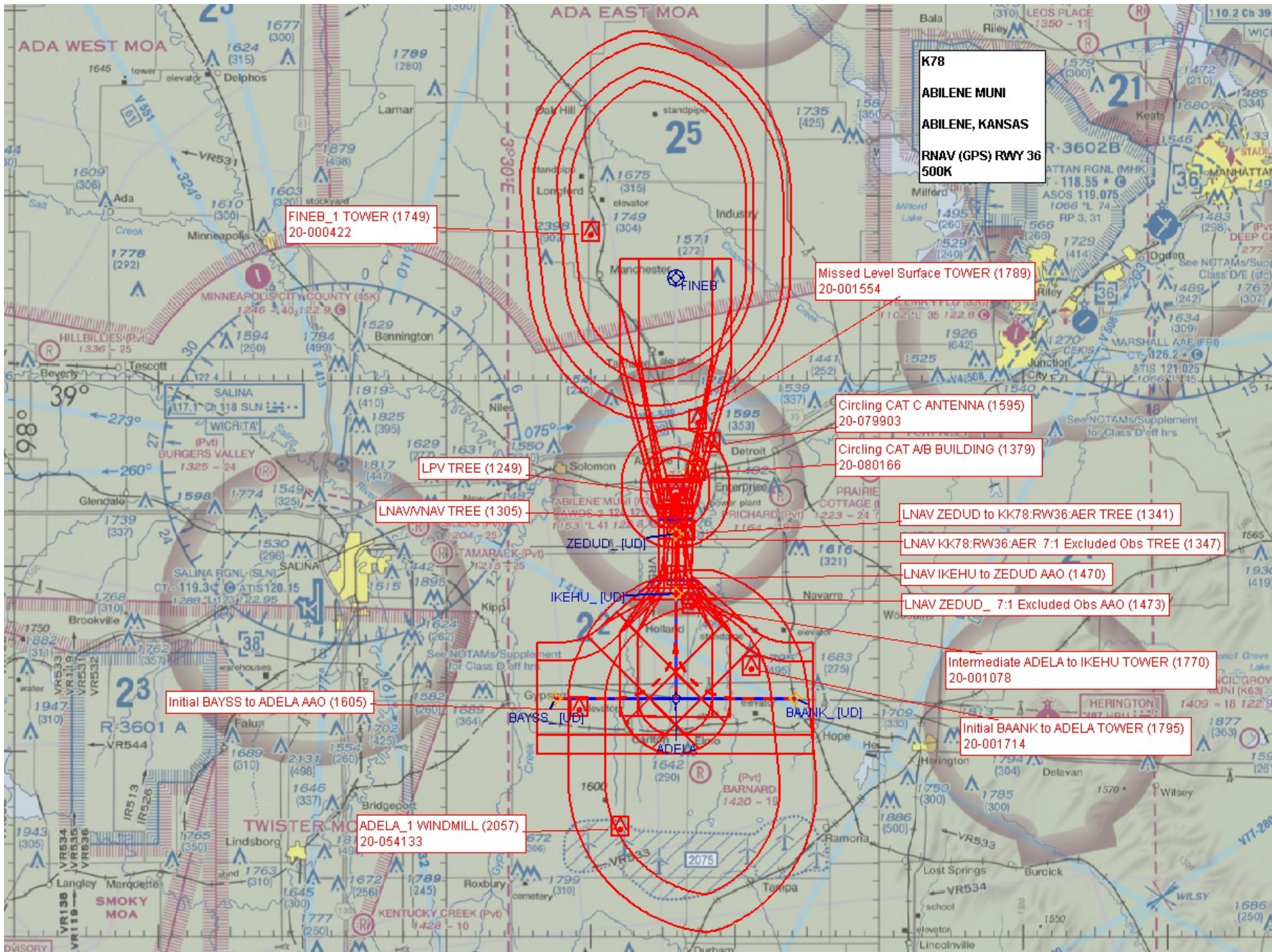
NC-2, 08 AUG 2024 to 05 SEP 2024



ELEV 1153	D	TDZE 1151
REIL Rwy 17 and 35 📻		
MIRL Rwy 17-35 📻		

CATEGORY	A	B	C	D
LPV DA	1468-1	317 (400-1)		NA
LNAV/VNAV DA	1468-1	317 (400-1)		NA
LNAV MDA	1620-1	469 (500-1)	1620-1 3/8 469 (500-1 3/8)	NA
C CIRCLING	1740-1	587 (600-1)	1980-2 1/2 827 (900-2 1/2)	NA





K78
ABILENE MUNI
ABILENE, KANSAS
RNAV (GPS) RWY 36
500K

FINEB_1 TOWER (1749)
 20-000422

Missed Level Surface TOWER (1789)
 20-001554

Circling CAT C ANTENNA (1595)
 20-079903

Circling CAT A/B BUILDING (1379)
 20-080166

LNAV ZEDUD to KK78:RW36:AER TREE (1341)

LNAV KK78:RW36:AER 7:1 Excluded Obs TREE (1347)

LNAV IKEHU to ZEDUD AAO (1470)

LNAV ZEDUD_ 7:1 Excluded Obs AAO (1473)

Intermediate ADELA to IKEHU TOWER (1770)
 20-001078

Initial BAANK to ADELA TOWER (1795)
 20-001714

Initial BAYSS to ADELA AAO (1605)

ADELA_1 WINDMILL (2057)
 20-054133

LPV TREE (1249)

LNAV/VNAV TREE (1305)

ZEDUD_ [UD]

IKEHU_ [UD]

BAYSS_ [UD]

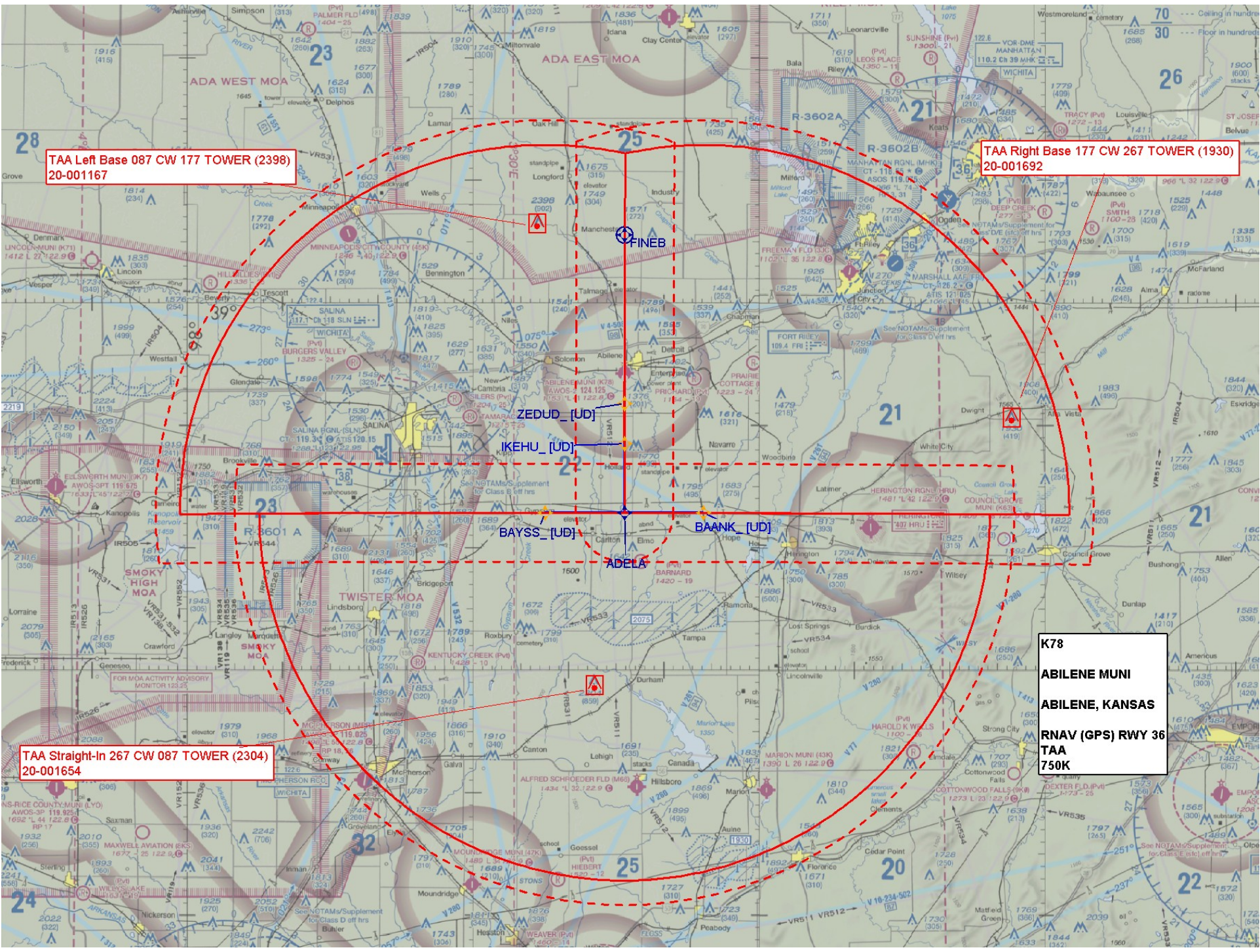
BAANK_ [UD]

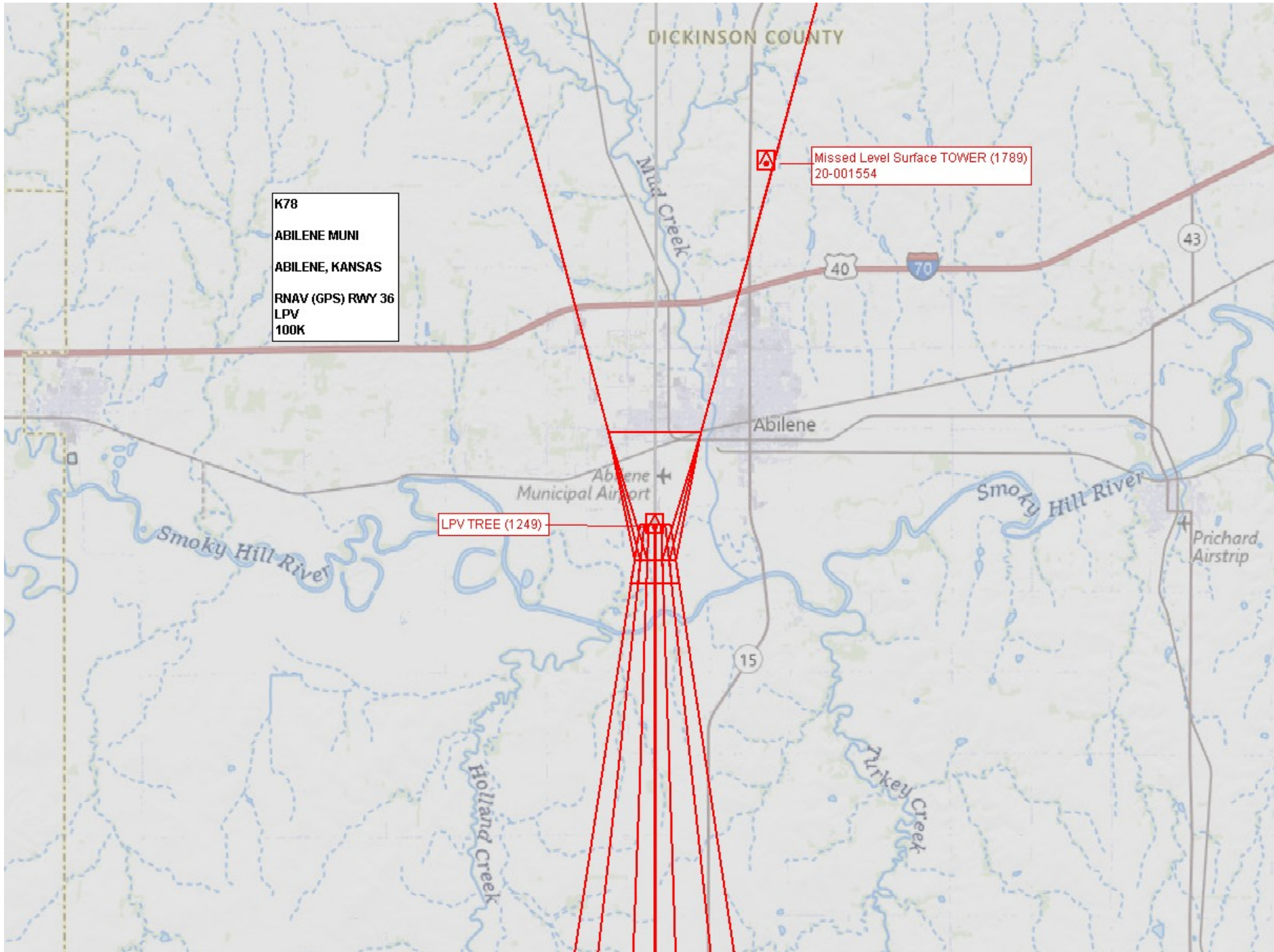
TAA Left Base 087 CW 177 TOWER (2398)
20-001167

TAA Right Base 177 CW 267 TOWER (1930)
20-001692

TAA Straight-In 267 CW 087 TOWER (2304)
20-001654

K78
ABILENE MUNI
ABILENE, KANSAS
RNAV (GPS) RWY 36
TAA
750K

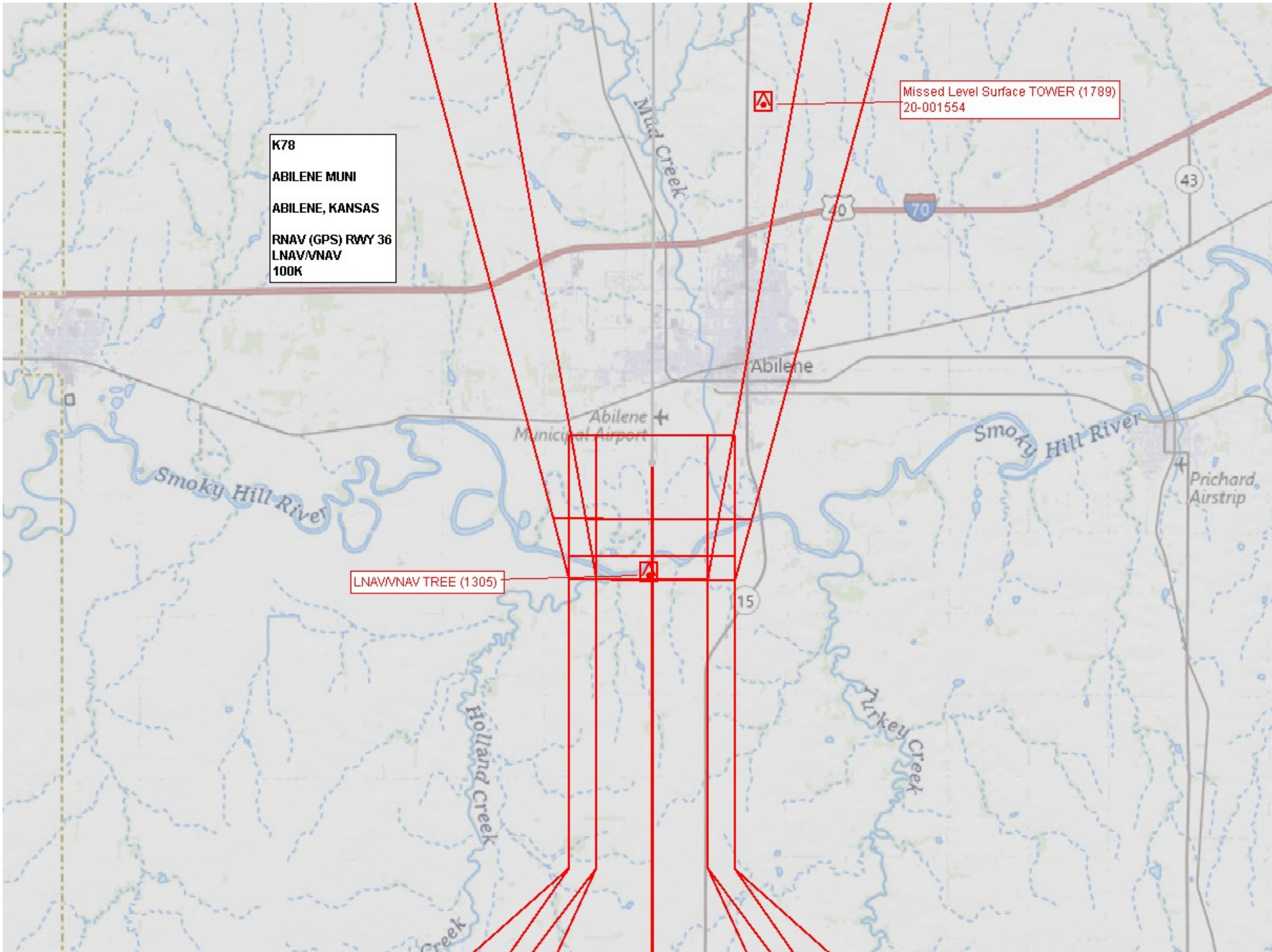


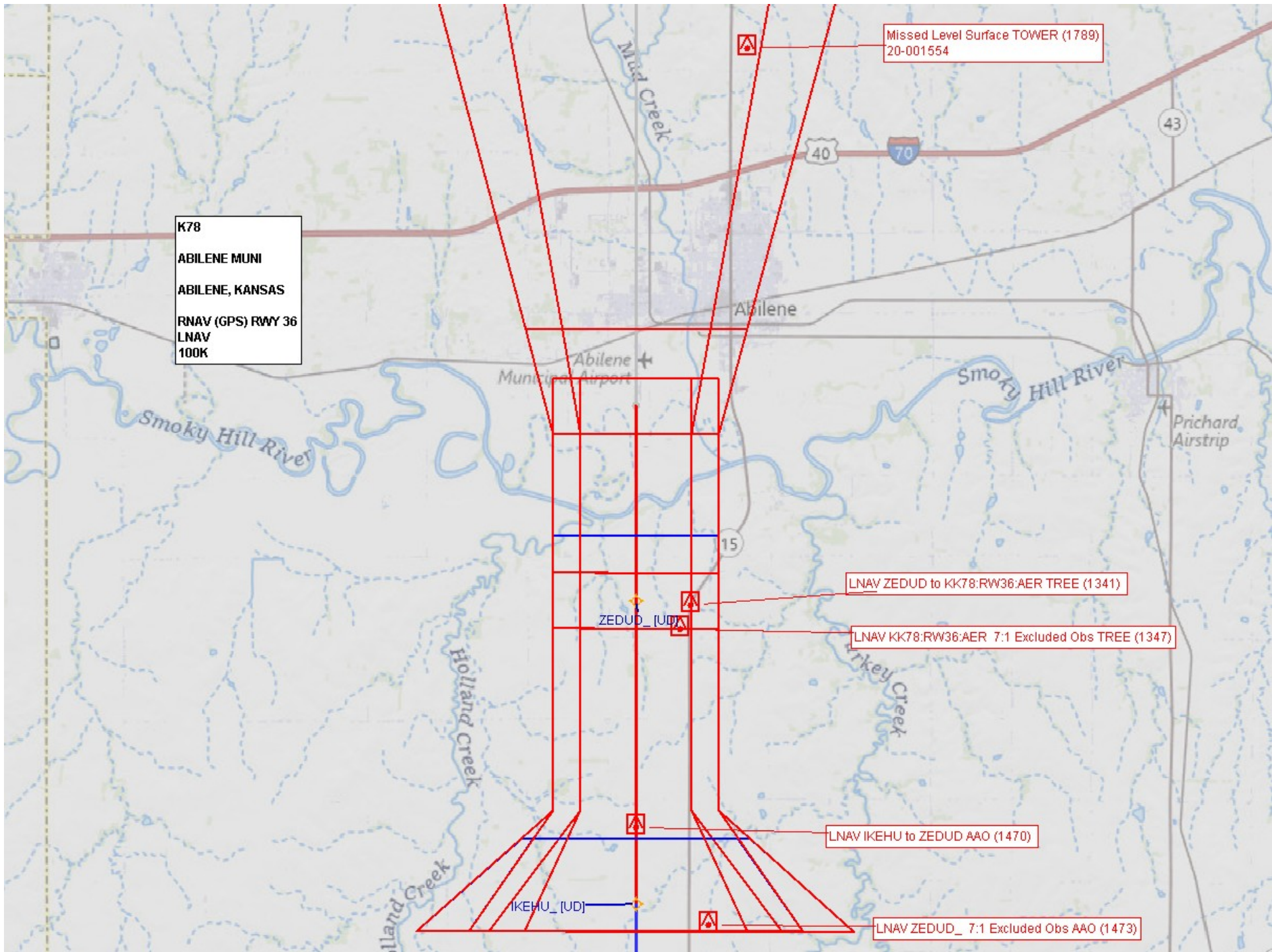


K78
ABILENE MUNI
ABILENE, KANSAS
RNAV (GPS) RWY 36
LNAV/VNAV
100K

Missed Level Surface TOWER (1789)
20-001554

LNAV/VNAV TREE (1305)





Missed Level Surface TOWER (1789)
20-001554

K78
ABILENE MUNI
ABILENE, KANSAS
RNAV (GPS) RWY 36
LNAV
100K

LNAV ZEDUD to KK78:RW36:AER TREE (1341)

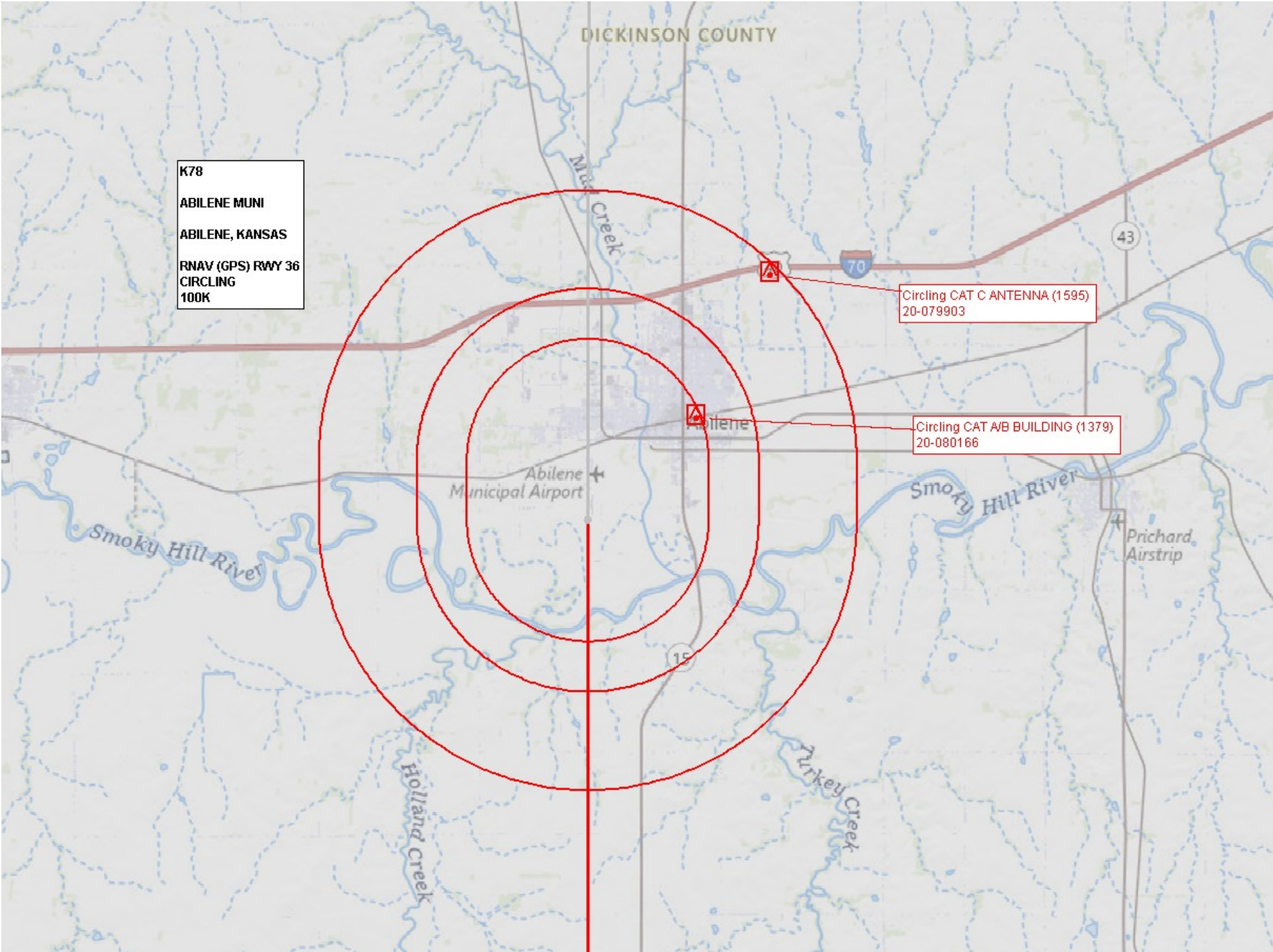
LNAV KK78:RW36:AER 7:1 Excluded Obs TREE (1347)

LNAV IKEHU to ZEDUD AAO (1470)

LNAV ZEDUD_ 7:1 Excluded Obs AAO (1473)

ZEDUD_[UD]

IKEHU_[UD]



K78
ABILENE MUNI
ABILENE, KANSAS
RNAV (GPS) RWY 36
CIRCLING
100K

Circling CAT C ANTENNA (1595)
20-079903

Circling CAT AVB BUILDING (1379)
20-080166

DICKINSON COUNTY

Mo. Creek

Abilene

Abilene Municipal Airport

Smoky Hill River

Prichard Airstrip

Smoky Hill River

Holland Creek

Turkey Creek

43

70

15