


Flight Procedures Cover Page	Task Action: P-NOTAM	Task Type: IAP	Estimated Chart Date: 11/05/2020	APWS Task ID: EF57481C7196491A8EA40FB5A390DE93	APWS Project ID: 187D441C7A1D46B08D58E1DD64A33588
Procedure: RNAV (GPS) RWY 4L AMDT 1F		Enroute: NO	Specialist: Fowler, Shane		Agreement Number:
Airport ID: KLIT	Airport Name: BILL AND HILLARY CLINTON NATIONAL/ ADAMS FIELD	Airport City: LITTLE ROCK			State: AR
Facility ID:	Facility Type:	Flight Inspection Remark Type:			

Procedure Comments:
P-NOTAM.

PROCESSED IAW AIRCRAFT OPERATIONS GROUP (AJW-33) MEMO, OCTOBER 3, 2018, SUBJECT: FLIGHT INSPECTION REVIEW NOTREQUIRED.

CONTACT: ALLAN WILL 405-954-6103.

J ZEDER 08/05/2020 16


41


WAAS CH 90411 W04A	APP CRS 046°	Rwy Idg 7976 TDZE 258 Apt Elev 266
--	------------------------	---

RNAV (GPS) RWY 4L

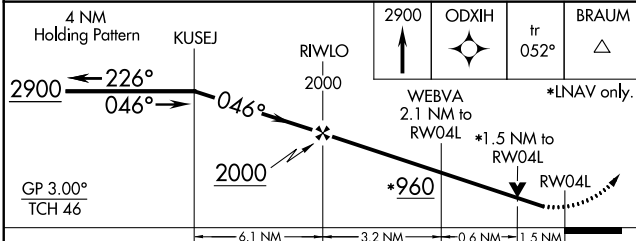
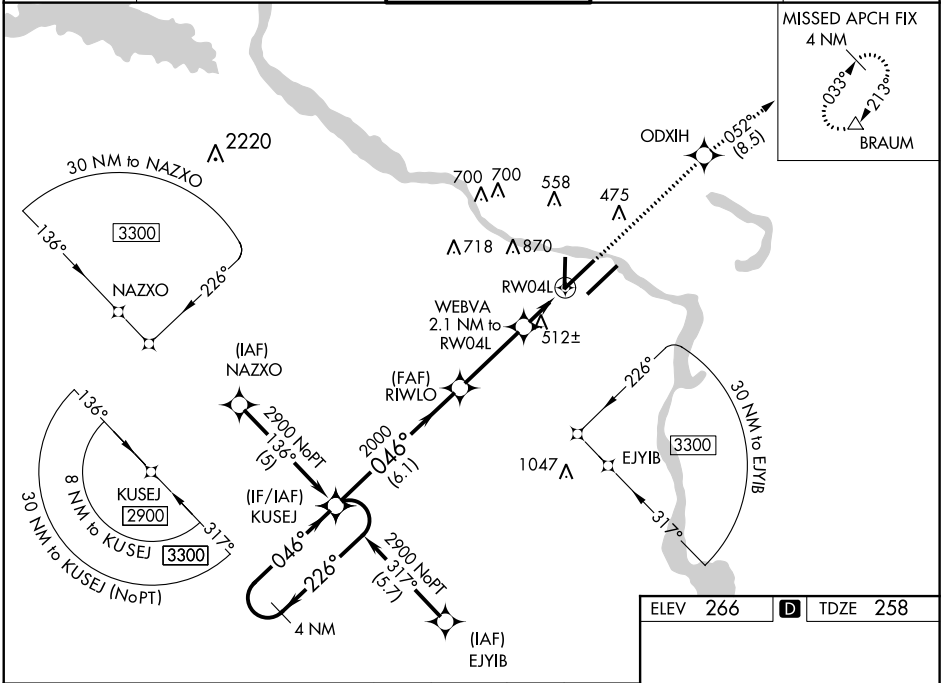
BILL AND HILLARY CLINTON NATIONAL/ADAMS FIELD (LIT)

RNP APCH.

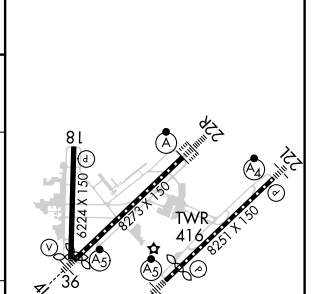
For uncompensated Baro-VNAV systems, LNAV/VNAV NA below -15°C or above 48°C. Rwy 4L helicopter visibility reduction below 3/4 SM NA. For inop ALS, increase LNAV Cat A and B visibility to RVR 5000. Simultaneous approach authorized. LNAV procedure NA during simultaneous operations. Use of FD or AP required during simultaneous operations.

	<p>MALSR</p> <p>MISSED APPROACH: Climb to 2900 direct ODXIH and on track 052° to BRAUM and hold.</p>
--	--

D-ATIS 125.65	LITTLE ROCK APP CON 135.4 353.6	ADAMS TOWER 118.7 257.8	GND CON 121.9 339.8	CLNC DEL 118.95
-------------------------	---	-----------------------------------	-------------------------------	---------------------------



ELEV 266	D TDZE 258
----------	-------------------



CATEGORY	A	B	C	D
LPV DA		544/40	286 (300-3/4)	
LNAV/VNAV DA		824-1 1/2	566 (600-1 1/2)	
LNAV MDA	780/40	522 (600-3/4)	780/55	522 (600-1)
C CIRCLING	820-1 554 (600-1)	1000-1 734 (800-1)	1180-2 3/4 914 (1000-2 3/4)	1180-3 914 (1000-3)

TDZ/CL Rwy 22R
HRL Rwy 4R-22L, 4L-22R and 18-36

SC-1, 21 MAY 2020 to 18 JUN 2020

SC-1, 21 MAY 2020 to 18 JUN 2020